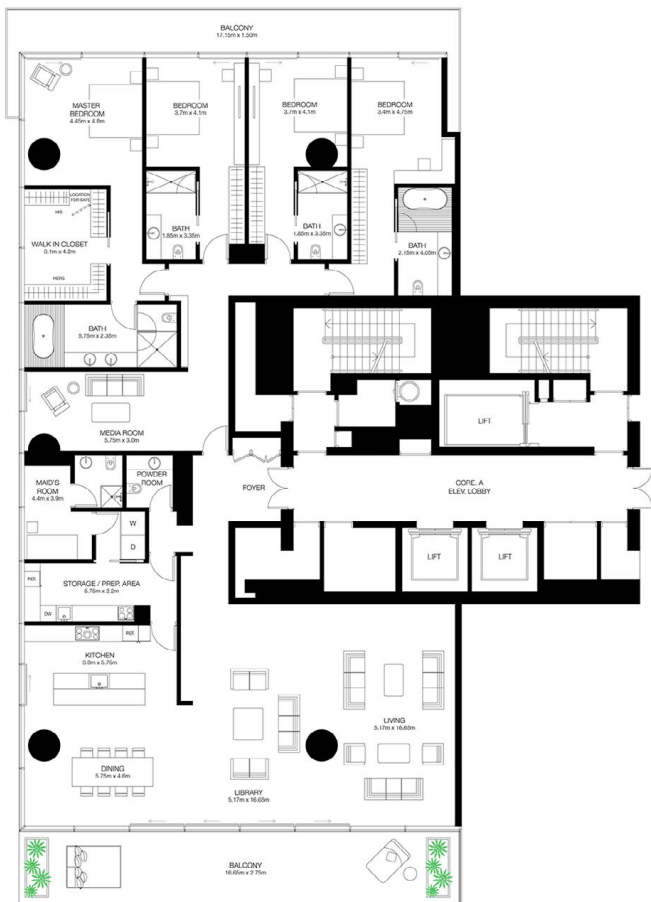
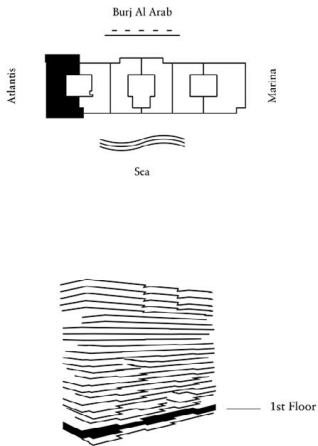


# 4-Bedroom Residence

## Unit 101 - 1st Floor

4 Bedrooms - 4.5 Bathrooms - 3 Parking Spaces

Residences	4,424 sq. ft.	411 sq. mt.
Terrace	828 sq. ft.	77 sq. mt.
Total	5,253 sq. ft.	488 sq. mt.



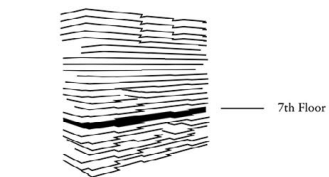
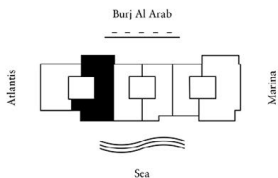
The layout representations and interior and exterior decorations in this document are provided for illustrative purposes only and are subject to change without notice. All internal and external areas of the units are sold unfurnished, unless agreed otherwise in writing, and any reference to kitchens, studios, offices, gyms, spas, water features, pools, decks and terraced areas, dining areas, galleries, saunas, safe cabins, closets, lifts, furnishings, plants and all forms of landscaping within this document are for illustrative purposes only. All square footages and dimensions are approximate only and may be subject to change at any time without notice. The square footage indicated herein may exceed the usable floor area. The placement, specifications and details of any appliances, fittings and other goods within the units are subject to the terms of the sale and purchase agreement and subject to change without notice. Omnitrust reserves the right to make any changes to the content of this document at any time without notice. Any reference to Omnitrust is a reference to Luxury Developments L.L.C. and/or the Omnitrust group of companies, in the context requires.

# 4-Bedroom Residence

## Unit 702 - 7th Floor

4 Bedrooms - 4.5 Bathrooms - 3 Parking Spaces

Residences	4,262 sq. ft.	396 sq. mt.
Terrace	1,098 sq. ft.	102 sq. mt.
Total	5,360 sq. ft.	498 sq. mt.



The layout representations and interior and exterior decorations in this document are provided for illustrative purposes only and are subject to change without notice. All internal and external areas of the units are sold unfurnished, unless agreed otherwise in writing, and any references to kitchens, studies, offices, gyms, spas, water features, pools, decks and terraced areas, dining areas, galleries, sofas, side tables, chairs, beds, furnishings, plants and all forms of landscaping within this document are for illustrative purposes only. All square footages and dimensions are approximate only and may be subject to change at any time without notice. The square footage indicated herein may exceed the usable floor area. The placement, specifications and details of any appliances, fittings and white goods within the units are subject to the terms of the sale and purchase agreement and subject to change without notice. One may reserve the right to make any changes to the content of this document at any time without notice. Any reference to Oneqat is a reference to Luxury Developers L.L.C. and/or the Oneqat group of companies, as the context requires.

# 3-Bedroom Residence

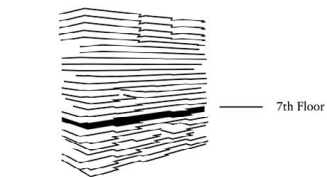
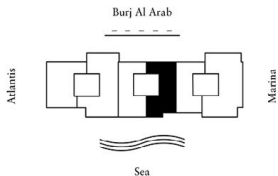
Unit 704 - 7th Floor

3 Bedrooms - 3.5 Bathrooms - 2 Parking Spaces

Residences 3,237 sq. ft. 301 sq. mt.

Terrace 482 sq. ft. 45 sq. mt.

Total 3,719 sq. ft. 346 sq. mt.



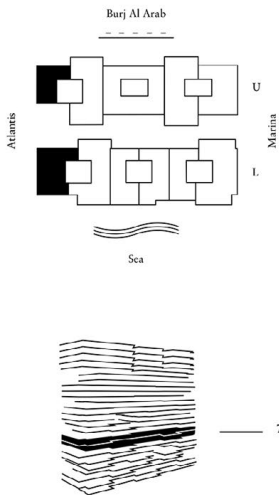
The layout representation and interior and exterior decorations in this document are provided for illustrative purposes only and are subject to change without notice. All internal and external areas of the units are sold unfurnished, unless agreed otherwise in writing, and any references to kitchens, studies, offices, gyms, spas, water features, pools, deck and terraced areas, dining areas, galleries, sofas, air cabins, closets, lifts, furnishings, plants and all forms of landscaping within this document are for illustrative purposes only. All square footages and dimensions are approximate only and may be subject to change at any time without notice. The square footage indicated herein may exceed the usable floor area. The placement, specifications and details of any appliances, fittings and white goods within the units are subject to the terms of the sale and purchase agreement and subject to change without notice. One must reserve the right to make any changes to the contents of this document at any time without notice. Any reference to Oneplus is a reference to Luxury Developments LLC, under the Oneplus group of companies, in the context requires.



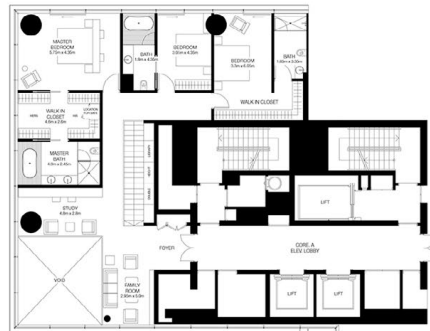
# 4-Bedroom Duplex

Unit 701 - 7th / 8th Floor  
 4 Bedrooms - 4.5 Bathrooms - 3 Parking Spaces

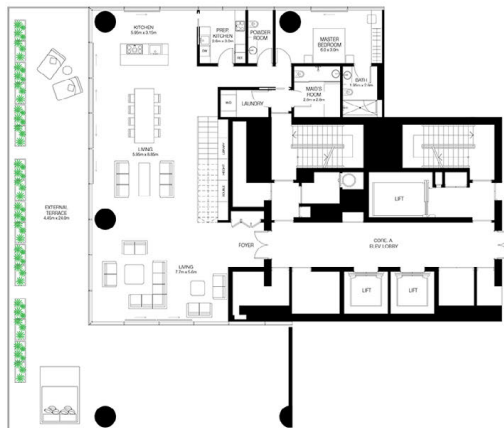
Residences	4,716 sq. ft.	438 sq. mt.
Terrace	1,910 sq. ft.	177 sq. mt.
Total	6,625 sq. ft.	615 sq. mt.



## Upper Level



## Lower Level



The layout representation and interior and exterior decorations in this document are provided for illustrative purposes only and are subject to change without notice. All internal and external areas of the units are sold unfurnished, unless agreed otherwise in writing, and any references to kitchens, studies, offices, gyms, spas, water features, pools, deck and terraced areas, dining areas, galleries, saunas, air cabins, closets, lifts, furnishings, plants and all forms of landscaping within this document are for illustrative purposes only. All square footages and dimensions are approximate only and may be subject to change at any time without notice. The square footage indicated herein may exceed the usable floor area. The placement, specifications and details of any appliances, fittings and white goods within the units are subject to the terms of the sale and purchase agreement and subject to change without notice. One must reserve the right to make any changes to the contents of this document at any time without notice. Any reference to Oneplus is a reference to Oneplus Developments LLC, and/or the Oneplus group of companies, in the context required.

# 3-Bedroom Residence

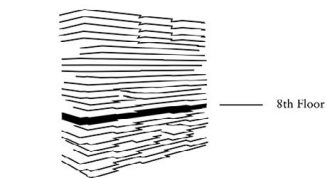
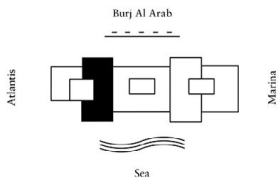
Unit 801 - 8th Floor

3 Bedrooms - 3.5 Bathrooms - 2 Parking Spaces

Residences 3,131 sq. ft. 291 sq. mt.

Terrace 1,698 sq. ft. 158 sq. mt.

Total 4,829 sq. ft. 449 sq. mt.



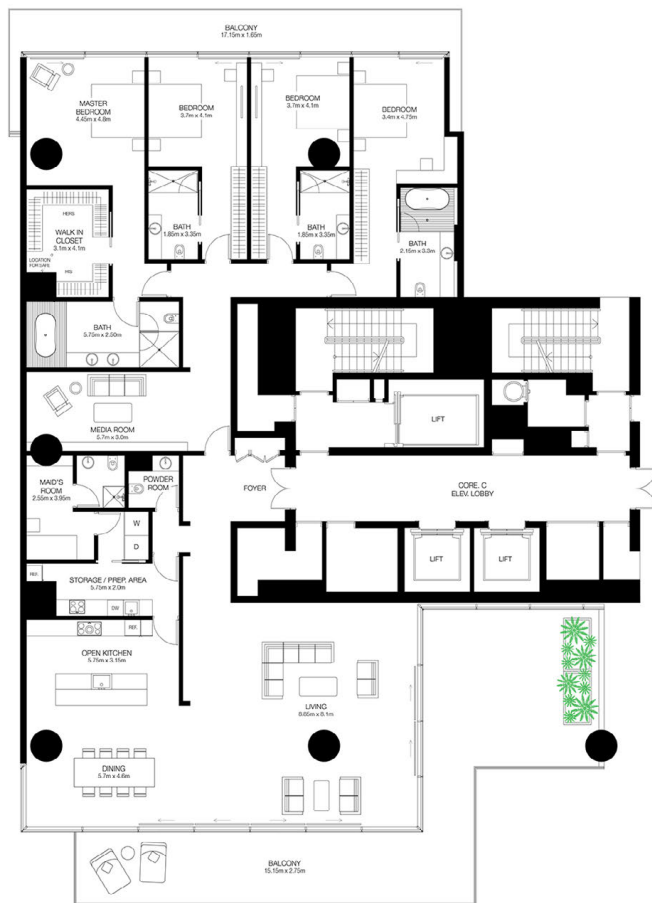
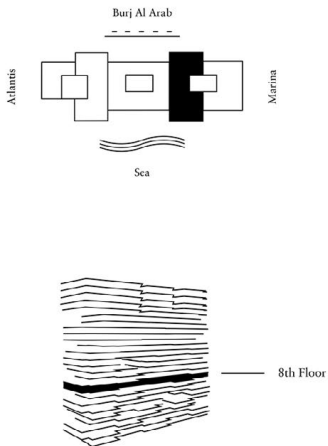
The layout representation and interior and exterior decorations in this document are provided for illustrative purposes only and are subject to change without notice. All internal and external areas of the units are sold unfurnished, unless agreed otherwise in writing, and any references to kitchens, studies, offices, gyms, spas, water features, pools, deck and terraced areas, dining areas, galleries, saunas, sazi cabins, closets, lifts, furnishings, plants and all forms of landscaping within this document are for illustrative purposes only. All square footages and dimensions are approximate only and may be subject to change at any time without notice. The square footage indicated herein may exceed the usable floor area. The placement, specifications and details of any appliances, fittings and white goods within the units are subject to the terms of the sale and purchase agreement and subject to change without notice. Omnia reserves the right to make any changes to the contents of this document at any time without notice. Any reference to Omnia is a reference to Laurus Developments LLC, and/or the Omnia group of companies, in the context required.

# 4-Bedroom Residence

## Unit 804 - 8th Floor

4 Bedrooms - 4.5 Bathrooms - 3 Parking Spaces

Residences	4,256 sq. ft.	395 sq. mt.
Terrace	1,118 sq. ft.	104 sq. mt.
Total	5,374 sq. ft.	499 sq. mt.



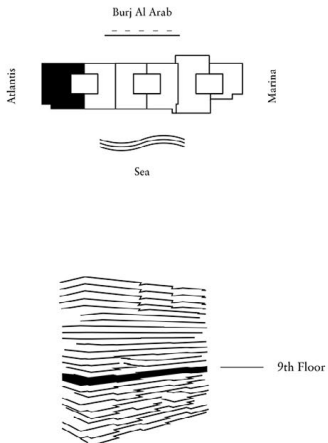
The layout representations and interior and exterior decorations in this document are provided for illustrative purposes only and are subject to change without notice. All internal and external areas of the units are sold unfurnished, unless agreed otherwise in writing, and any reference to kitchens, studies, offices, gyms, water features, pools, decks and terraced areas, dining areas, galleries, saunas, safe cabinets, closets, lifts, furnishings, plants and all forms of landscaping within this document are for illustrative purposes only. All square footages and dimensions are approximate only and may be subject to change at any time without notice. The square footage indicated herein may exceed the usable floor area. The placement, specifications and details of any appliances, fittings and white goods within the units are subject to the terms of the sale and purchase agreement and subject to change without notice. One might reserve the right to make any changes to the content of this document at any time without notice. Any reference to Onequbit is a reference to Luxury Developments L.L.C. and/or the Onequbit group of companies, as the context requires.

# 4-Bedroom Residence

## Unit 901 - 9th Floor

4 Bedrooms - 4 Bathrooms - 3 Parking Spaces

Residences	4,653 sq. ft.	433 sq. mt.
Terrace	1,015 sq. ft.	95 sq. mt.
Total	5,668 sq. ft.	527 sq. mt.



The layout representation and interior and exterior decorations in this document are provided for illustrative purposes only and are subject to change without notice. All internal and external areas of the units are sold unfurnished, unless agreed otherwise in writing, and any references to kitchens, studies, offices, gyms, spas, water features, pools, deck and terraced areas, dining areas, galleries, sofas, side tables, chairs, beds, furnishings, plants and all forms of landscaping within this document are for illustrative purposes only. All square footages and dimensions are approximate only and may be subject to change at any time without notice. The square footage indicated herein may exceed the usable floor area. The placement, specifications and details of any appliances, fittings and white goods within the units are subject to the terms of the sale and purchase agreement and subject to change without notice. One must reserve the right to make any changes to the contents of this document at any time without notice. Any reference to Oneqin is a reference to Lantary Developments LLC, and/or the Oneqin group of companies, in the context requires.

# 3-Bedroom Residence

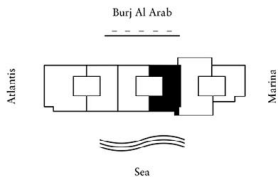
Unit 904 - 9th Floor

3 Bedrooms - 3.5 Bathrooms - 2 Parking Spaces

Residences 3,238 sq. ft. 301 sq. mt.

Terrace 541 sq. ft. 51 sq. mt.

Total 3,779 sq. ft. 352 sq. mt.

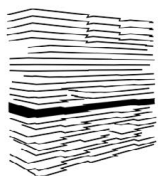


Atlantis

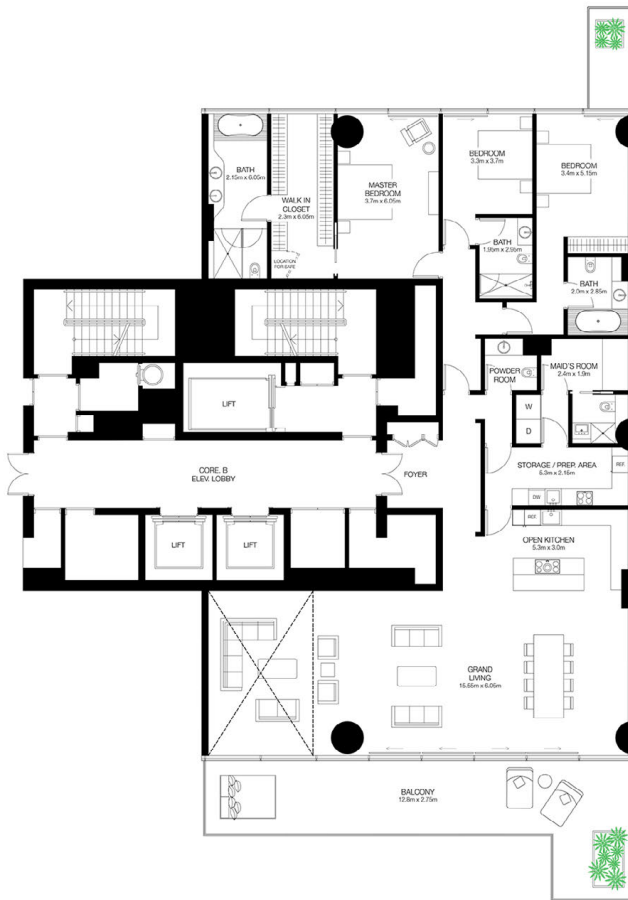
Burj Al Arab

Sea

Marina



9th Floor



The layout representation and interior and exterior decorations in this document are provided for illustrative purposes only and are subject to change without notice. All internal and external areas of the units are sold unfurnished, unless agreed otherwise in writing, and any references to kitchens, studies, offices, gyms, spas, water features, pools, deck and terraced areas, dining areas, galleries, sofas, side tables, chaises, beds, furnishings, plants and all forms of landscaping within this document are for illustrative purposes only. All square footages and dimensions are approximate only and may be subject to change at any time without notice. The square footage indicated herein may exceed the usable floor area. The placement, specifications and details of any appliances, fittings and white goods within the units are subject to the terms of the sale and purchase agreement and subject to change without notice. One must reserve the right to make any changes to the content of this document at any time without notice. Any reference to Oneqin is a reference to Lantary Developments LLC, under the Oneqin group of companies, in the context requires.



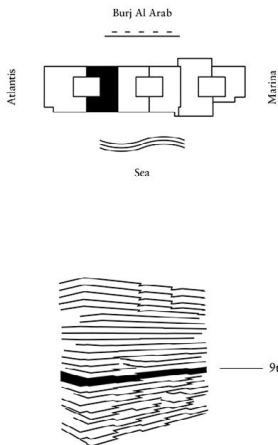
# 3-Bedroom Residence

Unit 902 - 9th Floor

3 Bedrooms - 3.5 Bathrooms - 2 Parking Spaces

Residences	3,239 sq. ft.	301 sq. mt.
Terrace	405 sq. ft.	38 sq. mt.

Total	3,644 sq. ft.	339 sq. mt.
-------	---------------	-------------



The layout representations and interior and exterior decorations in this document are provided for illustrative purposes only and are subject to change without notice. All internal and external areas of the units are sold unless stated otherwise in writing and any references to kitchens, studies, offices, gyms, spas, water features, pools, deck and terraced areas, dining areas, galleries, saunas, saffron, closets, lifts, furnishings, plants and all forms of landscaping within this document are for illustrative purposes only. All square footages and dimensions are approximate only and may be subject to change at any time without notice. The square footage indicated herein may exceed the usable floor area. The placement, specifications and details of any appliances, fittings and white goods within the units are subject to the terms of the sale and purchase agreement and subject to change without notice. One92 reserves the right to make any changes to the content of this document at any time without notice. Any reference to One92 is a reference to Lavery Developments LLC, and/or the One92 group of companies, as the context requires.

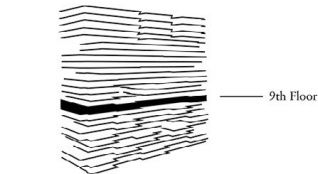
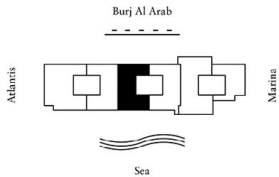


# 3-Bedroom Residence

## Unit 903 - 9th Floor

3 Bedrooms - 3.5 Bathrooms - 2 Parking Spaces

Residences	3,233 sq. ft.	301 sq. mt.
Terrace	465 sq. ft.	44 sq. mt.
<b>Total</b>	<b>3,698 sq. ft.</b>	<b>345 sq. mt.</b>



The layout representation and interior and exterior decorations in this document are provided for illustrative purposes only and are subject to change without notice. All internal and external areas of the units are solid unshaded, unless agreed otherwise in writing, and any references to kitchens, studies, offices, gyms, spas, water features, pools, deck and terraced areas, dining areas, galleries, safes, side-closets, closets, bins, handshings, plants and all forms of landscaping within this document are for illustrative purposes only. All square footages and dimensions are approximate only and may be subject to change at any time without notice. The square footage indicated herein may exceed the usable floor area. The placement, specifications and details of any appliances, fittings and white goods within the units are subject to the terms of the sale and purchase agreement and subject to change without notice. One must reserve the right to make any changes to the content of this document at any time without notice. Any reference to Oneplus is a reference to Oneplus Developments LLC, a member of the Oneplus group of companies, in the context requires.

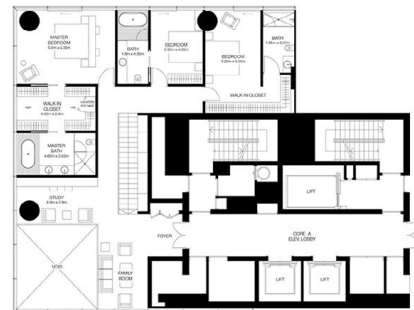


# 4-Bedroom Duplex

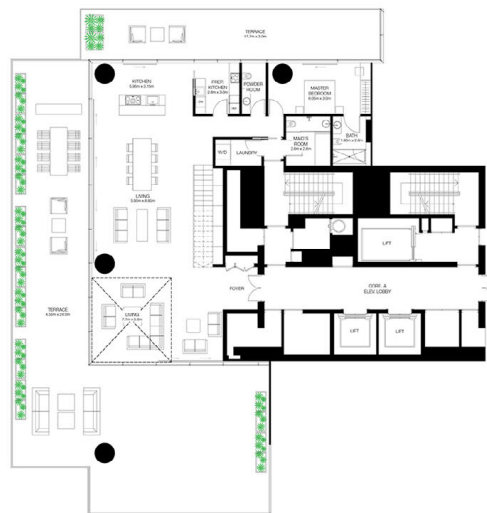
Unit 1001 - 10th / 11th Floor  
 4 Bedrooms - 4.5 Bathrooms - 3 Parking Spaces

Residences	4,718 sq. ft.	439 sq. mt.
Terrace	2,510 sq. ft.	234 sq. mt.
Total	7,228 sq. ft.	671 sq. mt.

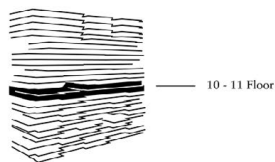
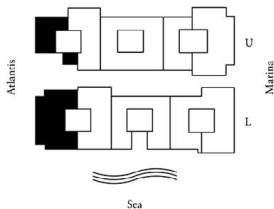
Upper Level



Lower Level



Burj Al Arab



The layout representations and interior and exterior decorations in this document are provided for illustrative purposes only and are subject to change without notice. All internal and external areas of the units are sold unfurnished, unless agreed otherwise in writing, and any references to kitchens, studies, offices, gyms, spas, water features, pools, deck and terraced areas, dining areas, galleries, sofas, air cabins, closets, lifts, furnishings, plants and all forms of landscaping within this document are for illustrative purposes only. All square footages and dimensions are approximate only and may be subject to change at any time without notice. The square footage indicated herein may exceed the usable floor area. The placement, specifications and details of any appliances, fittings and white goods within the units are subject to the terms of the sale and purchase agreement and subject to change without notice. Owner reserves the right to make any changes to the content of this document at any time without notice. Any reference to Oneqat in a reference to Luxury Developers L.L.C. and/or the Oneqat group of companies, at the context requires.



# 4-Bedroom Residence

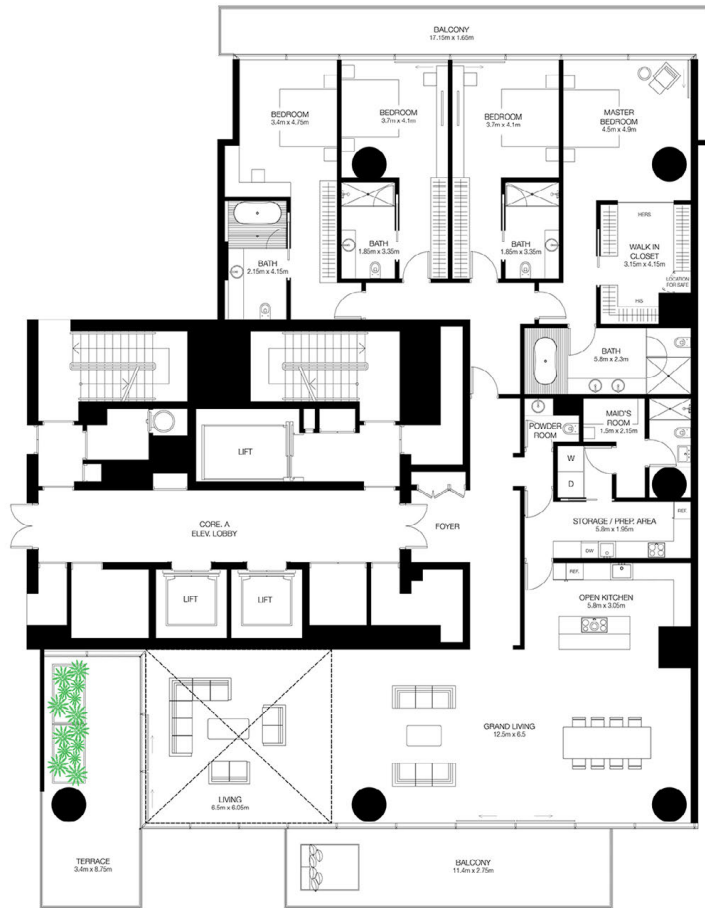
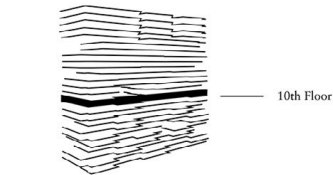
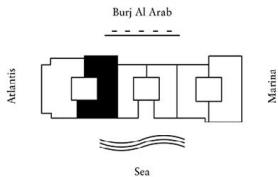
Unit 1002 - 10th Floor

4 Bedrooms - 4 Bathrooms - 3 Parking Spaces

Residences 4,175 sq. ft. 388 sq. mt.

Terrace 1,204 sq. ft. 112 sq. mt.

Total 5,379 sq. ft. 500 sq. mt.



The layout representation and interior and exterior decorations in this document are provided for illustrative purposes only and are subject to change without notice. All internal and external areas of the units are sold unfurnished, unless agreed otherwise in writing, and any reference to kitchens, studies, offices, gyms, spas, water features, pools, deck and terraced areas, dining areas, galleries, sofas, side tables, chairs, beds, furnishings, plants and all forms of landscaping within this document are for illustrative purposes only. All square footages and dimensions are approximate only and may be subject to change at any time without notice. The square footage indicated herein may exceed the usable floor area. The placement, specifications and details of any appliances, fittings and white goods within the units are subject to the terms of the sale and purchase agreement and subject to change without notice. One must reserve the right to make any changes to the content of this document at any time without notice. Any reference to Oneplus is a reference to Oneplus Developments LLC, under the Oneplus group of companies, in the context requires.

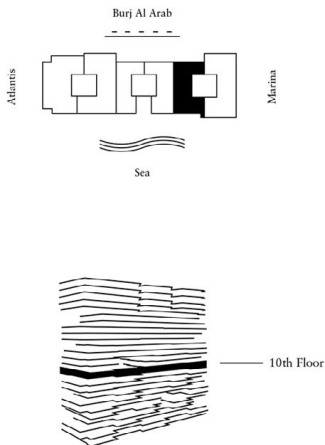


# 3-Bedroom Residence

Unit 1005 - 10th Floor

3 Bedrooms - 3.5 Bathrooms - 2 Parking Spaces

Residences	3,243 sq. ft.	301 sq. mt.
Terrace	241 sq. ft.	22 sq. mt.
<b>Total</b>	<b>3,484 sq. ft.</b>	<b>323 sq. mt.</b>



The layout representation and interior and exterior decorations in this document are provided for illustrative purposes only and are subject to change without notice. All internal and external areas of the units are sold unfurnished, unless agreed otherwise in writing, and any references to kitchens, studies, offices, gyms, spas, water features, pools, deck and terraced areas, dining areas, galleries, saunas, air-cabins, closets, lifts, furnishings, plants and all forms of landscaping within this document are for illustrative purposes only. All square footages and dimensions are approximate only and may be subject to change at any time without notice. The square footage indicated herein may exceed the usable floor area. The placement, specifications and details of any appliances, fittings and white goods within the units are subject to the terms of the sale and purchase agreement and subject to change without notice. One must reserve the right to make any changes to the content of this document at any time without notice. Any reference to Oneunit is a reference to Lattany Developments LLC, member the Oneunit group of companies, as the context requires.

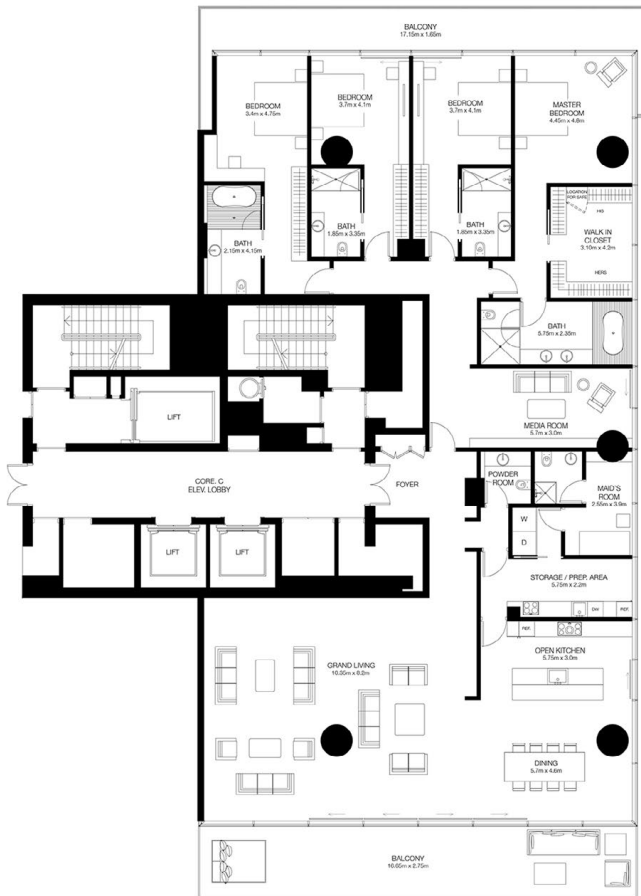
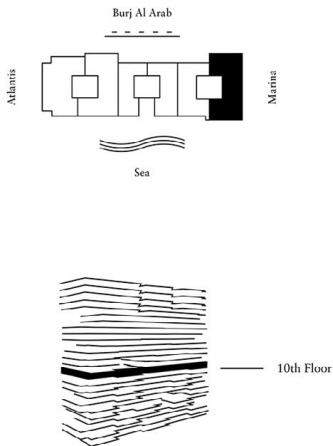


# 4-Bedroom Residence

## Unit 1006 - 10th Floor

4 Bedrooms - 4 Bathrooms - 3 Parking Spaces

Residences	4,426 sq. ft.	412 sq. mt.
Terrace	827 sq. ft.	77 sq. mt.
<b>Total</b>	<b>5,253 sq. ft.</b>	<b>489 sq. mt.</b>



The layout representation and interior and exterior decorations in this document are provided for illustrative purposes only and are subject to change without notice. All internal and external areas of the units are sold unfurnished, unless agreed otherwise in writing, and any references to kitchens, studies, offices, gyms, spas, water features, pools, deck and terrace areas, dining areas, dining galleries, sofas, side tables, closets, libraries, furnishings, plants and all forms of landscaping within this document are for illustrative purposes only. All square footages and dimensions are approximate only and may be subject to change at any time without notice. The square footage indicated herein may exceed the usable floor area. The placement, specifications and details of any appliances, fittings and white goods within the units are subject to the terms of the sale and purchase agreement and subject to change without notice. One might reserve the right to make any changes to the content of this document at any time without notice. Any reference to Oneqmap is a reference to Luxury Developments L.L.C. and/or the Oneqmap group of companies, in the context required.

# 3-Bedroom Residence

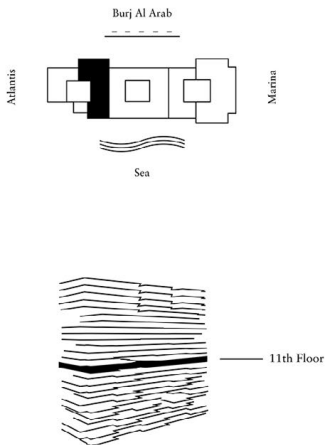
Unit 1101 - 11th Floor

3 Bedrooms - 3.5 Bathrooms - 2 Parking Spaces

Residences 3,203 sq. ft. 298 sq. mt.

Terrace 1,230 sq. ft. 114 sq. mt.

Total 4,433 sq. ft. 412 sq. mt.



The layout representation and interior and exterior decorations in this document are provided for illustrative purposes only and are subject to change without notice. All internal and external areas of the units are sold unfurnished, unless agreed otherwise in writing, and any references to kitchens, studies, offices, gyms, spas, water features, pools, deck and terraced areas, dining areas, galleries, safes, air cabins, closets, lifts, furnishings, plants and all forms of landscaping within this document are for illustrative purposes only. All square footages and dimensions are approximate only and may be subject to change at any time without notice. The square footage indicated herein may exceed the usable floor area. The placement, specifications and details of any appliances, fittings and white goods within the units are subject to the terms of the sale and purchase agreement and subject to change without notice. One must reserve the right to make any changes to the contents of this document at any time without notice. Any reference to Oneqat is a reference to Luxury Developments LLC, and/or the Oneqat group of companies, in the context requires.

# 4-Bedroom Residence

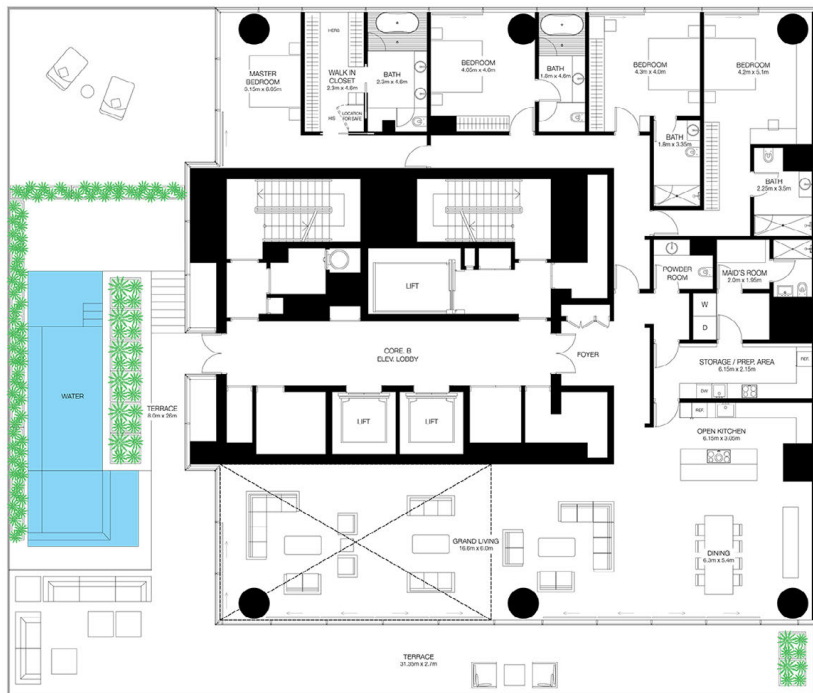
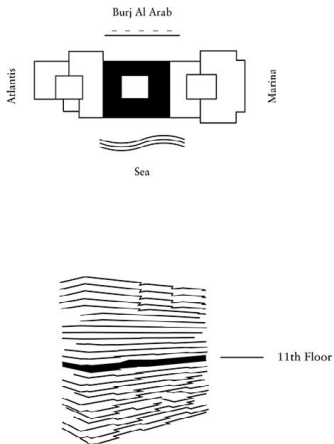
Unit 1102 - 11th Floor

4 Bedrooms - 4 Bathrooms - 3 Parking Spaces

Residences 4,408 sq. ft. 409 sq. mt.

Terrace 2,876 sq. ft. 267 sq. mt.

Total 7,284 sq. ft. 676 sq. mt.



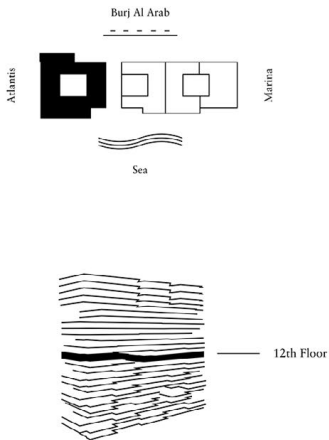
The layout representation and interior and exterior decorations in this document are provided for illustrative purposes only and are subject to change without notice. All internal and external areas of the units are sold unfurnished, unless agreed otherwise in writing, and any references to kitchens, studies, offices, gyms, spas, water features, pools, deck and terraced areas, dining areas, galleries, safes, air cabins, closets, lifts, furnishings, plants and all forms of landscaping within this document are for illustrative purposes only. All square footages and dimensions are approximate only and may be subject to change at any time without notice. The square footage indicated herein may exceed the usable floor area. The placement, specifications and details of any appliances, fittings and white goods within the units are subject to the terms of the sale and purchase agreement and subject to change without notice. One must reserve the right to make any changes to the contents of this document at any time without notice. Any reference to Oneplus is a reference to Lantary Developments LLC, and/or its Oneplus group of companies, in the context requires.



# 4-Bedroom Residence

Unit 1201 - 12th Floor  
4 Bedrooms - 4.5 Bathrooms - 3 Parking Spaces

Residences	5,113 sq. ft.	475 sq. mt.
Terrace	3,735 sq. ft.	347 sq. mt.
Total	8,848 sq. ft.	822 sq. mt.



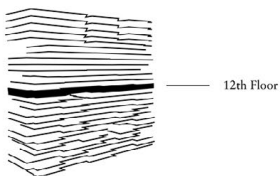
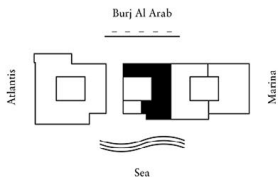
The layout representations and interior and exterior decorations in this document are provided for illustrative purposes only and are subject to change without notice. All internal and external areas of the units are sold unfurnished, unless agreed otherwise in writing, and any references to kitchens, studies, offices, gyms, water features, pool, deck and terraced areas, dining areas, galleries, sofas, side tables, chairs, beds, furnishings, plants and all forms of landscaping within this document are for illustrative purposes only. All square footages and dimensions are approximate only and may be subject to change at any time without notice. The square footage indicated herein may exceed the usable floor area. The placement, specifications and details of any appliances, fittings and white goods within the units are subject to the terms of the sale and purchase agreement and subject to change without notice. Owner reserves the right to make any changes to the content of this document at any time without notice. Any reference to Onyiah is a reference to Lanyard Developments L.L.C. and/or the Contractor group of companies, in the context required.



# 4-Bedroom Residence

Unit 1202 - 12th Floor  
4 Bedrooms - 4 Bathrooms - 3 Parking Spaces

Residences	3,429 sq. ft.	318 sq. mt.
Terrace	212 sq. ft.	20 sq. mt.
Total	3,641 sq. ft.	338 sq. mt.

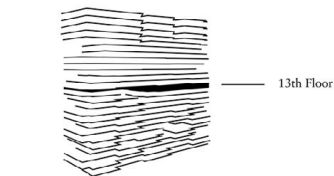
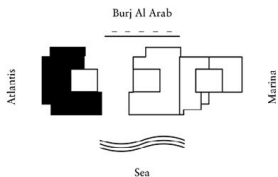


The layout representation and interior and exterior decorations in this document are provided for illustrative purposes only and are subject to change without notice. All internal and external areas of the units are sold unfurnished, unless agreed otherwise in writing, and any references to kitchens, studies, offices, gyms, spas, water features, pools, deck and terraced areas, dining areas, galleries, safes, air cabins, closets, lifts, furnishings, plants and all forms of landscaping within this document are for illustrative purposes only. All square footages and dimensions are approximate only and may be subject to change at any time without notice. The square footage indicated herein may exceed the usable floor area. The placement, specifications and details of any appliances, fittings and white goods within the units are subject to the terms of the sale and purchase agreement and subject to change without notice. One must reserve the right to make any changes to the content of this document at any time without notice. Any reference to Oneqat is a reference to Lantary Developments LLC, under the Oneqat group of companies, in the context requires.

# 4-Bedroom Residence

Unit 1301 - 13th Floor  
 4 Bedrooms - 4.5 Bathrooms - 3 Parking Spaces

Residences	5,675 sq. ft.	527 sq. mt.
Terrace	1,639 sq. ft.	152 sq. mt.
Total	7,314 sq. ft.	679 sq. mt.



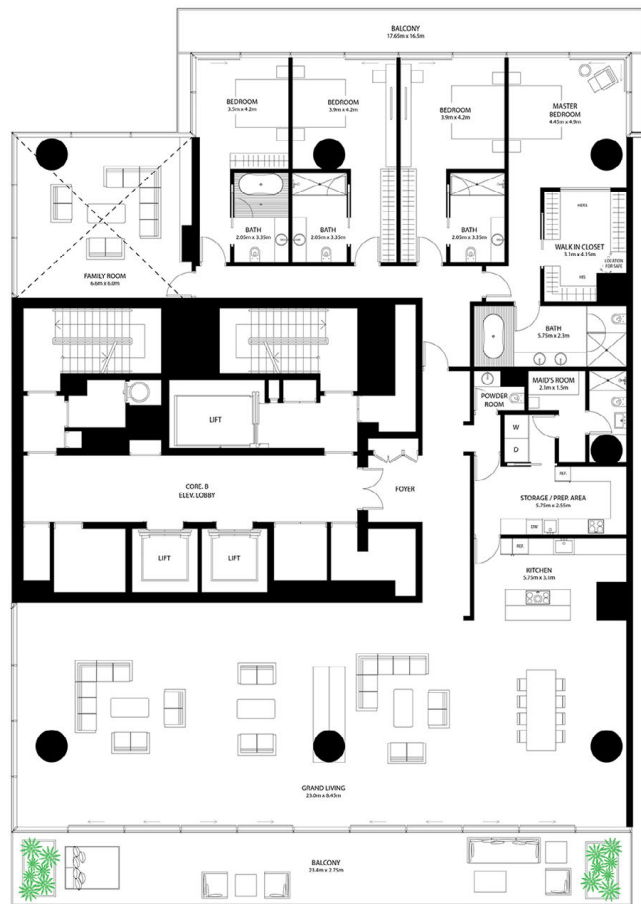
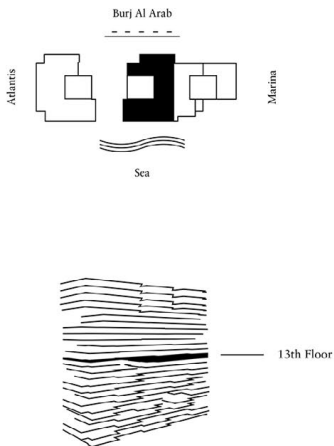
The layout representations and interior and exterior decorations in this document are provided for illustrative purposes only and are subject to change without notice. All internal and external areas of the units are sold unfurnished, unless agreed otherwise in writing, and any references to kitchens, studies, offices, gyms, spas, water features, pools, decks and terraced areas, dining areas, saloons, saunas, safe cabins, closets, lifts, furnishings, plants and all forms of landscaping within this document are for illustrative purposes only. All square footages and dimensions are approximate only and may be subject to change at any time without notice. The square footage indicated herein may exceed the usable floor area. The placement, specifications and details of any appliances, fittings and other goods within the units are subject to the terms of the site and purchase agreement and subject to change without notice. One Palm reserves the right to make any changes to the content of this document at any time without notice. Any reference to One Palm is a reference to One Palm Developments LLC, and/or the One Palm group of companies, as the context requires.

# 4-Bedroom Residence

## Unit 1302 - 13th Floor

4 Bedrooms - 4.5 Bathrooms - 3 Parking Spaces

Residences	5,554 sq. ft.	516 sq. mt.
Terrace	1,044 sq. ft.	97 sq. mt.
Total	6,598 sq. ft.	613 sq. mt.

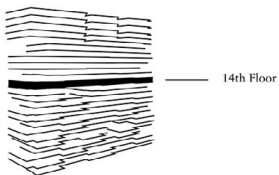
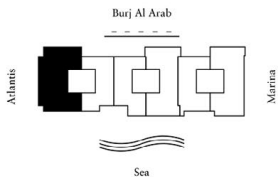


The layout representations and interior and exterior decorations in this document are provided for illustrative purposes only and are subject to change without notice. All internal and external areas of the units are sold unfurnished, unless agreed otherwise in writing, and any references to kitchens, studies, offices, gyms, spas, water features, pools, decks and terraced areas, dining areas, galleries, saunas, spa cabins, closets, lifts, furnishings, plants and all forms of landscaping within this document are for illustrative purposes only. All square footages and dimensions are approximate only and may be subject to change at any time without notice. The square footage indicated herein may exceed the usable floor area. The placement, specifications and details of any appliances, fittings and other goods within the units are subject to the terms of the sale and purchase agreement and subject to change without notice. One91at reserves the right to make any changes to the content of this document at any time without notice. Any reference to One91at is a reference to Luxury Developments LLC, and/or the One91at group of companies, as the context requires.

# 4-Bedroom Residence

Unit 1401 - 14th Floor  
 4 Bedrooms - 4,5 Bathrooms - 3 Parking Spaces

Residences	3,997 sq. ft.	371 sq. mt.
Terrace	2,137 sq. ft.	198 sq. mt.
Total	6,134 sq. ft.	570 sq. mt.



The layout representations and interior and exterior decorations in this document are provided for illustrative purposes only and are subject to change without notice. All internal and external areas of the units are sold unfurnished, unless agreed otherwise in writing, and any reference to kitchens, studios, offices, gyms, spas, water features, pools, decks and terraced areas, dining areas, galleries, salons, safe cabins, closets, lifts, furnishings, plants and all forms of landscaping within this document are for illustrative purposes only. All square footages and dimensions are approximations only and may be subject to change at any time without notice. The square footage indicated herein may exceed the usable floor area. The placement, specifications and details of any appliances, fittings and white goods within the units are subject to the terms of the sale and purchase agreement and subject to change without notice. One must reserve the right to make any change to the content of this document at any time without notice. Any reference to OnePalm is a reference to Luxury Developments L.L.C. and/or the OnePalm group of companies, as the context requires.

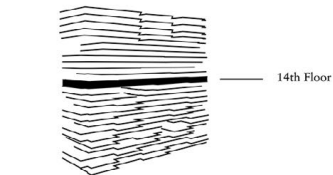
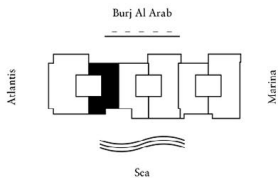


# 3-Bedroom Residence

Unit 1402 - 14th Floor

3 Bedrooms - 3.5 Bathrooms - 2 Parking Spaces

Residences	3,246 sq. ft.	301 sq. mt.
Terrace	260 sq. ft.	24 sq. mt.
Total	3,506 sq. ft.	325 sq. mt.



The layout representations and interior and exterior decorations in this document are provided for illustrative purposes only and are subject to change without notice. All internal and external areas of the units are sold unfurnished, unless agreed otherwise in writing, and any references to kitchens, studies, offices, gyms, spas, water features, pools, deck and terrace areas, dining areas, garages, safes, safe cabinets, closets, lifts, furnishings, plants and all forms of landscaping within this document are for illustrative purposes only. All square footages and dimensions are approximate and may be subject to change at any time without notice. The square footage indicated herein may exceed the usable floor area. The placement, specifications and details of any appliances, fittings and other goods within the units are subject to the terms of the sale and purchase agreement and subject to change without notice. One might reserves the right to make any changes to the content of this document at any time without notice. Any reference to Omnitrac is a reference to Luxury Developments L.L.C. and/or the Omnitrac group of companies, at the contract requires.

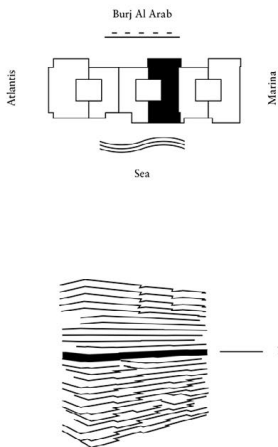
# 3-Bedroom Residence

Unit 1404 - 14th Floor

3 Bedrooms - 3.5 Bathrooms - 2 Parking Spaces

Residences 3,238 sq. ft. 300 sq. mt.  
Terrace 1,809 sq. ft. 168 sq. mt.

Total 5,047 sq. ft. 468 sq. mt.



The layout representations and interior and exterior decorations in this document are provided for illustrative purposes only and are subject to change without notice. All internal and external areas of the units are sold unfurnished, unless agreed otherwise in writing, and any references to kitchens, studies, offices, gyms, spas, water features, pools, decks and terraced areas, dining areas, galleries, cafes, club cabins, clubs, bars, landscaping, plants and all forms of landscaping within this document are for illustrative purposes only. All square footages and dimensions are approximate only and may be subject to change at any time without notice. The square footage indicated herein may exceed the usable floor area. The placement, specifications and details of any appliances, fittings and other goods within the units are subject to the terms of the sale and purchase agreement and subject to change without notice. Onsite reserves the right to make any changes to the content of this document at any time without notice. Any reference to Onsite is a reference to Luxury Developments L.L.C. and/or the Onsite group of companies, as the context requires.

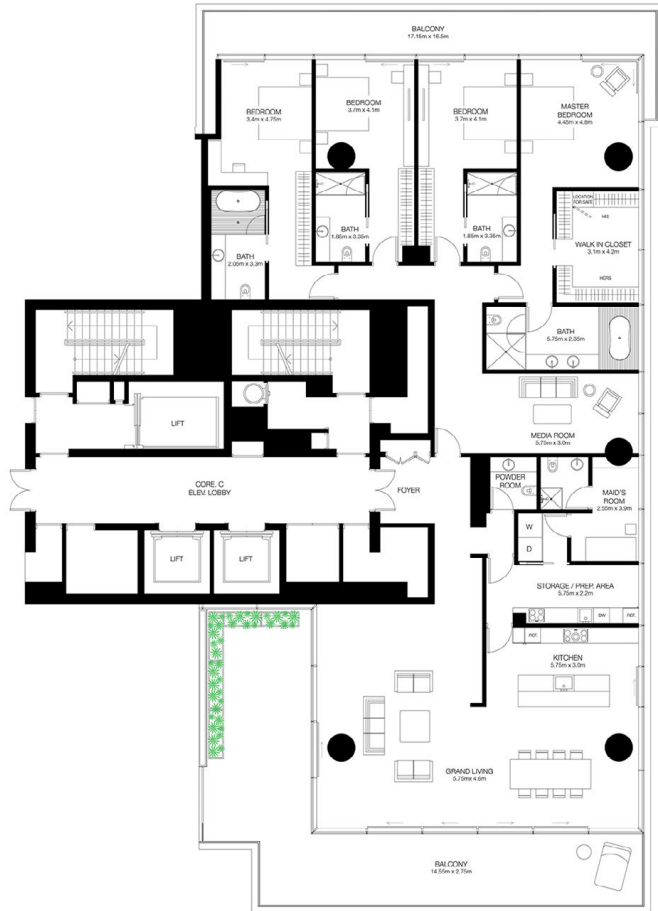
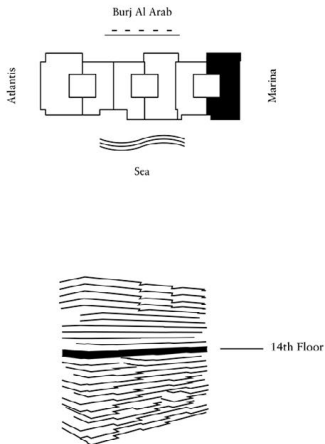


# 4-Bedroom Residence

Unit 1406 - 14th Floor

4 Bedrooms - 4.5 Bathrooms - 3 Parking Spaces

Residences	4,036 sq. ft.	375 sq. mt.
Terrace	710 sq. ft.	66 sq. mt.
Total	4,747 sq. ft.	441 sq. mt.



The layout representations and interior and exterior decorations in this document are provided for illustrative purposes only and are subject to change without notice. All internal and external areas of the units are sold unfurnished, unless agreed otherwise in writing, and any reference to kitchens, studios, offices, gym, spa, water features, pools, deck and terrace areas, dining areas, galleries, saunas, safe cabins, closets, lifts, furnishings, plants and all forms of landscaping within this document are for illustrative purposes only. All square footages and dimensions are approximate only and may be subject to change at any time without notice. The square footage indicated herein may exceed the usable floor area. The placement, specifications and details of any appliances, fittings and other goods within the units are subject to the terms of the sale and purchase agreement and subject to change without notice. Owner reserves the right to make any changes to the content of this document at any time without notice. Any reference to Onmyart is a reference to Luvvy Developments L.L.C. and/or the Onmyart group of companies, in the context requires.

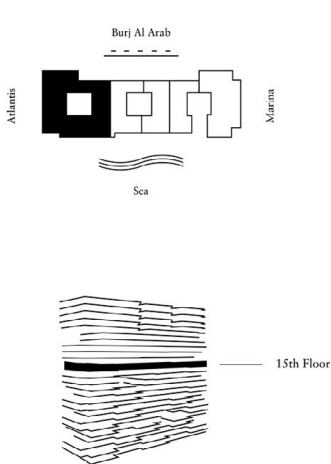


# 4-Bedroom Residence

Unit 1501 - 15th Floor  
4 Bedrooms - 4,5 Bathrooms - 3 Parking Spaces

Residences 5,204 sq. ft. 483 sq. mt.  
Terrace 4,559 sq. ft. 423 sq. mt.

Total 9,763 sq. ft. 907 sq. mt.

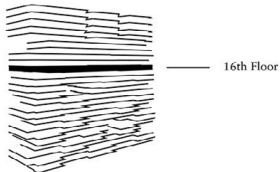
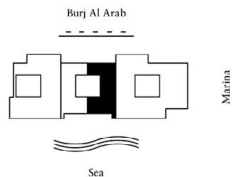


The layout representations and interior and exterior decorations in this document are provided for illustrative purposes only and are subject to change without notice. All internal and external areas of the units are sold unfurnished, unless agreed otherwise in writing, and any references to kitchens, studies, offices, gyms, spas, water features, pools, deck and terraced areas, dining areas, galleries, saunas, saunas, closets, lifts, furnishings, plants and all items of landscaping within this document are for illustrative purposes only. All square footages and dimensions are approximations only and may be subject to change at any time without notice. The square footage indicated herein may exceed the usable floor area. The placement, specifications and details of any appliances, fittings and white goods within the units are subject to the site and purchase agreement and subject to change without notice. Owner reserves the right to make any changes to the content of this document at any time without notice. Any reference to Onepalm is a reference to Luxury Developments LLC, and/or the Onepalm group of companies, in the context requires.

# 3-Bedroom Residence

Unit 1603 - 16th Floor  
 3 Bedrooms - 3.5 Bathrooms - 2 Parking Spaces

Residences	2,704 sq. ft.	251 sq. mt.
Terrace	646 sq. ft.	60 sq. mt.
<b>Total</b>	<b>3,350 sq. ft.</b>	<b>311 sq. mt.</b>



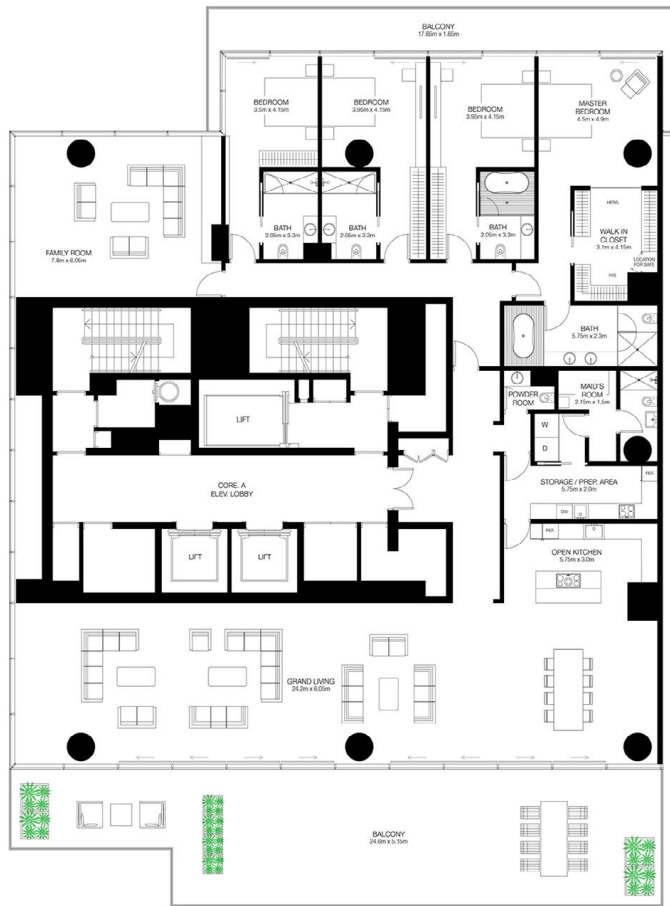
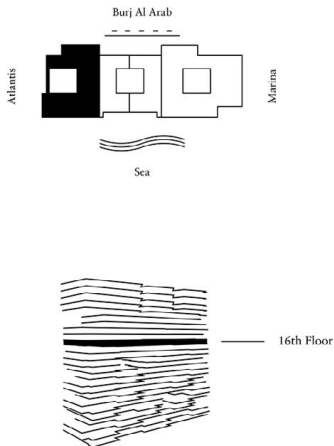
The layout representations and interior and exterior decorations in this document are provided for illustrative purposes only and are subject to change without notice. All internal and external areas of the units are sold unfurnished, unless agreed otherwise in writing, and any references to kitchens, studies, offices, gyms, spas, water features, pools, decks and terraced areas, dining areas, galleries, safes, safe cabinets, closets, lifts, furnishings, plants and all forms of landscaping within this document are for illustrative purposes only. All square footages and dimensions are approximate only and may be subject to change at any time without notice. The square footage indicated herein may exceed the usable floor area. The placement, specifications and details of any appliances, fittings and white goods within the units are subject to the terms of the sale and purchase agreement and subject to change without notice. Owner reserves the right to make any changes to the content of this document at any time without notice. Any reference to Omnicity is a reference to Luxury Developments L.L.C. and/or the Omnicity group of companies, as the context requires.

# 4-Bedroom Residence

Unit 1601 - 16th Floor

4 Bedrooms - 4.5 Bathrooms - 3 Parking Spaces

Residences	5,126 sq. ft.	476 sq. mt.
Terrace	1,560 sq. ft.	144 sq. mt.
Total	6,686 sq. ft.	621 sq. mt.

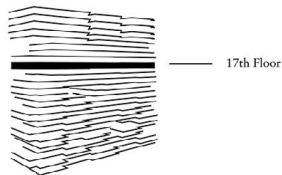
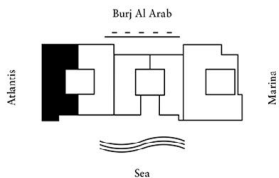


The layout representations and interior and exterior decorations in this document are provided for illustrative purposes only and are subject to change without notice. All internal and external areas of the units are sold unfurnished, unless agreed otherwise in writing, and any references to kitchens, studies, offices, gyms, spas, water features, pools, decks and terraced areas, dining areas, galleries, saunas, safe cabinets, closets, lifts, furnishings, plants and all forms of landscaping within this document are for illustrative purposes only. All square footings and dimensions are approximate and may be subject to change at any time without notice. The square footage indicated herein may exceed the usable floor area. The placement, specifications and details of any appliances, fittings and white goods within the units are subject to the terms of the site and purchase agreement and subject to change without notice. One might reserves the right to make any changes to the content of this document at any time without notice. Any reference to One might is a reference to Luxury Developments L.L.C. and/or the One might group of companies, at the contract requires.

# 4-Bedroom Residence

Unit 1701 - 17th Floor  
 4 Bedrooms - 4.5 Bathrooms - 3 Parking Spaces

Residences	4,045 sq. ft.	376 sq. mt.
Terrace	1,167 sq. ft.	108 sq. mt.
Total	5,212 sq. ft.	485 sq. mt.



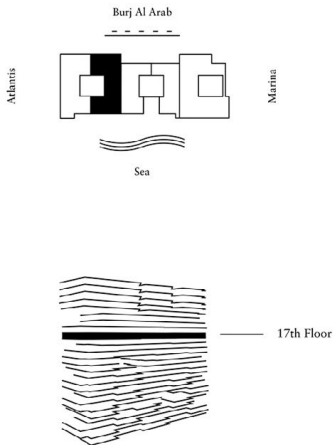
The layout representations and interior and exterior decorations in this document are provided for illustrative purposes only and are subject to change without notice. All internal and external areas of the units are sold unfurnished, unless agreed otherwise in writing, and any references to kitchens, studios, offices, gyms, spas, water features, pools, deck and terrace areas, dining areas, galleries, saunas, saffers, closets, lifts, furnishings, plants and all forms of landscaping within this document are for illustrative purposes only. All square footages and dimensions are approximate and may be subject to change at any time without notice. The square footage indicated herein may exceed the usable floor area. The placement, specifications and details of any appliances, fittings and white goods within the units are subject to the terms of the sale and purchase agreement and subject to change without notice. One might reserve the right to make any changes to the content of this document at any time without notice. Any reference to Oneqnet is a reference to Luxury Developments LLC, and/or the Oneqnet group of companies, as the context requires.

# 3-Bedroom Residence

## Unit 1702 - 17th Floor

3 Bedrooms - 3.5 Bathrooms - 2 Parking Spaces

Residences	2,949 sq. ft.	274 sq. mt.
Terrace	1,405 sq. ft.	130 sq. mt.
Total	4,354 sq. ft.	404 sq. mt.



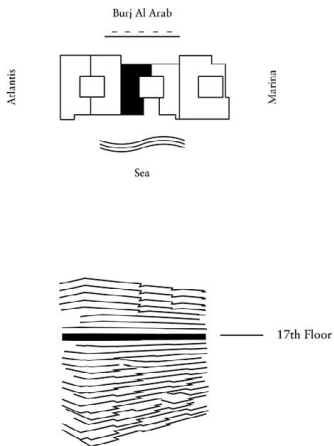
The layout representations and interior and exterior decorations in this document are provided for illustrative purposes only and are subject to change without notice. All internal and external areas of the units are sold unfurnished, unless agreed otherwise in writing, and any references to kitchens, studies, offices, gyms, spas, water features, pools, deck and terrace areas, dining areas, galleries, saunas, safe cabinets, closets, lifts, furnishings, plants and all forms of landscaping within this document are for illustrative purposes only. All square footages and dimensions are approximate only and may be subject to change at any time without notice. The square footage indicated herein may exceed the usable floor area. The placement, specifications and details of any appliances, fittings and other goods within the units are subject to the terms of the sale and purchase agreement and subject to change without notice. Omnitaj reserves the right to make any changes to the content of this document at any time without notice. Any reference to Omnitaj is a reference to Luxury Developments L.L.C. and/or the Omnitaj group of companies, as the context requires.

# 3-Bedroom Residence

## Unit 1703 - 17th Floor

3 Bedrooms - 3.5 Bathrooms - 2 Parking Spaces

Residences	2,943 sq. ft.	273 sq. mt.
Terrace	196 sq. ft.	18 sq. mt.
Total	3,139 sq. ft.	291 sq. mt.



The layout representation and interior and exterior decorations in this document are provided for illustrative purposes only and are subject to change without notice. All interior and exterior areas of the units are sold unfurnished, unless agreed otherwise in writing, and any reference to kitchens, studies, offices, garages, spas, water features, pools, decks and terraced areas, dining areas, galleries, saunas, safe cabinets, closets, lifts, furnishings, plants and all forms of landscaping within this document are for illustrative purposes only. All square footages and dimensions are approximate only and may be subject to change at any time without notice. The square footage indicated herein may exceed the usable floor area. The placement, specifications and details of any appliances, fittings and white goods within the units are subject to the terms of the sale and purchase agreement and subject to change without notice. One may reserve the right to make any changes to the content of this document at any time without notice. Any reference to Oneplus is a reference to Luxury Developments L.L.C. and/or the Oneplus group of companies, as the context requires.

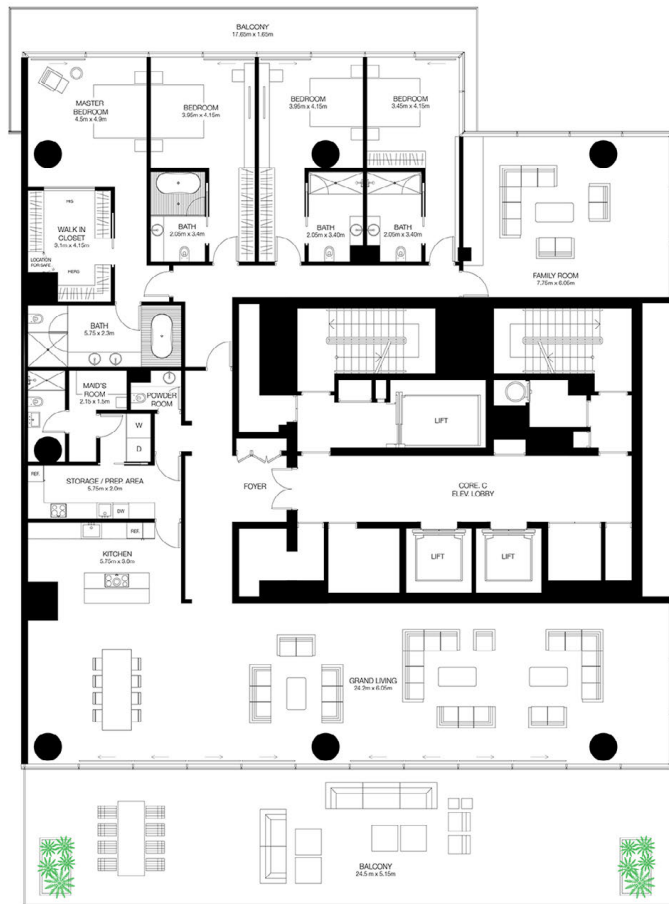
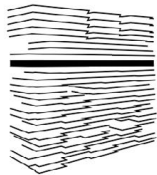
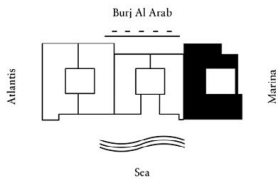
# 4-Bedroom Residence

Unit 1705 - 17th Floor

4 Bedrooms - 4.5 Bathrooms - 3 Parking Spaces

Residences 5,107 sq. ft. 475 sq. mt.  
Terrace 1,719 sq. ft. 160 sq. mt.

Total 6,826 sq. ft. 634 sq. mt.



The layout representations and interior and exterior decorations in this document are provided for illustrative purposes only and are subject to change without notice. All internal and external areas of the units are sold unfurnished, unless agreed otherwise in writing, and any references to kitchens, studies, offices, gyms, spas, water features, pools, deck and terrace areas, dining areas, living areas, galleries, saunas, safe rooms, closets, lifts, furnishings, plants and all forms of landscaping within this document are for illustrative purposes only. All square footages and dimensions are approximate only and may be subject to change at any time without notice. The square footage indicated herein may exceed the usable floor area. The placement, specifications and details of any appliances, fittings and white goods within the units are subject to the terms of the sale and purchase agreement and subject to change without notice. Christy reserves the right to make any changes to the content of this document at any time without notice. Any reference to Christy is a reference to Luxury Developments L.L.C. and/or the Christy group of companies, in the context required.

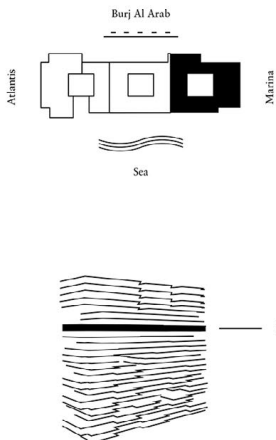
# 4-Bedroom Residence

## Unit 1804 - 18th Floor

4 Bedrooms - 4.5 Bathrooms - 4 Parking Spaces

Residences 5,381 sq. ft. 500 sq. mt.  
Terrace 3,817 sq. ft. 355 sq. mt.

Total 9,198 sq. ft. 855 sq. mt.



The layout representations and interior and exterior decorations in this document are provided for illustrative purposes only and are subject to change without notice. All internal and external areas of the units are sold unfurnished, unless agreed otherwise in writing, and any references to kitchens, studies, offices, gyms, spas, water features, pools, deck and terraced areas, dining areas, galleries, sofas, side tables, chaises, lifts, furnishings, plants and all forms of landscaping within the document are for illustrative purposes only. All square footages and dimensions are approximations only and may be subject to change at any time without notice. The square footage indicated herein may exceed the usable floor area. The placement, specifications and details of any appliances, fittings and white goods within the units are subject to the terms of the sale and purchase agreement and subject to change without notice. Chumart reserves the right to make any changes to the content of this document at any time without notice. Any reference to Onspart is a reference to Laurus Developments L.L.C., and/or the Onspart group of companies, in the context required.

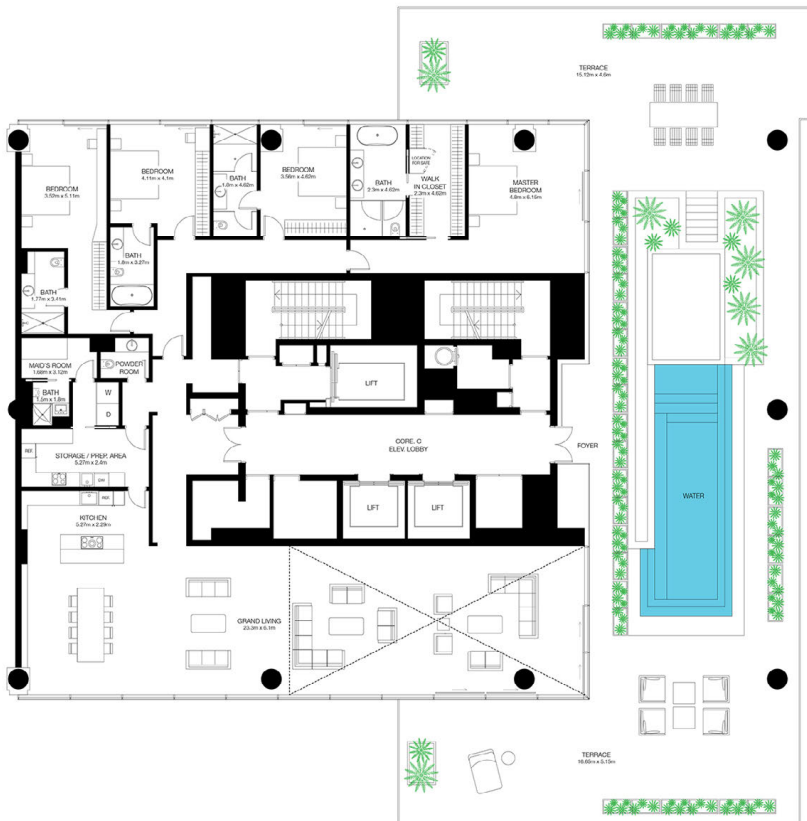
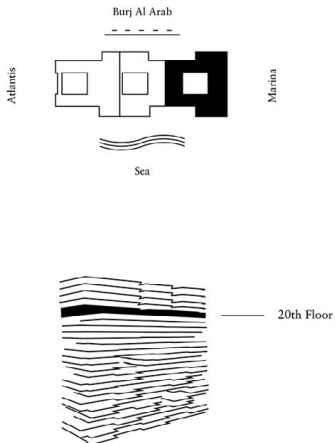




# 4-Bedroom Residence

Unit 2003 - 20th Floor  
 4 Bedrooms - 4.5 Bathrooms - 4 Parking Spaces

Residences	4,168 sq. ft.	387 sq. mt.
Terrace	4,112 sq. ft.	382 sq. mt.
Total	8,281 sq. ft.	769 sq. mt.



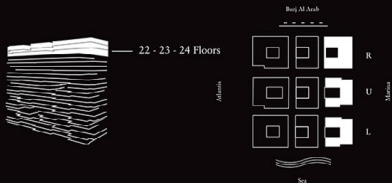
The layout representation and interior and exterior decorations in this document are provided for illustrative purposes only and are subject to change without notice. All internal and external areas of the units are sold undivided, unless agreed otherwise in writing, and any reference to kitchens, studies, offices, gyms, spas, water features, pools, deck and terraced areas, dining areas, galleries, sofas, side tables, chairs, beds, furnishings, plants and all forms of landscaping within this document are for illustrative purposes only. All square footages and dimensions are approximate only and may be subject to change at any time without notice. The square footage indicated herein may exceed the usable floor area. The placement, specifications and details of any appliances, fittings and white goods within the units are subject to the terms of the sale and purchase agreement and subject to change without notice. One must reserve the right to make any changes to the contents of this document at any time without notice. Any reference to Oneqat is a reference to Lantary Developments L.L.C. and/or the Oneqat group of companies, as the context requires.

# 5-Bedroom Duplex + Roof Terrace

Unit 2203 - 22nd / 23rd / 24th Floor  
5 Bedrooms - 8 Bathrooms - 6 Parking Spaces

Residences 12,907 sq. ft. 1,199 sq. mt.  
Terrace 7,791 sq. ft. 724 sq. mt.

Total 20,698 sq. ft. 1,923 sq. mt.



## 5-Bedroom Duplex Apartment Features

**Private Lift Lobby**  
Step into your own lift lobby designed by acclaimed Japanese designer firm, Suyei Pritzker, creating an environment of tranquility before you even enter your stunning residence.

**Grand Arrival and Secondary Access**  
A magnificent grand foyer serves as an impressive first step into a home of remarkable distinction. Plus secondary access for staff and service calls.

**Floor to Ceiling Windows**  
Sunning, 360-degree views flood each interior space with light and provide an inspiring backdrop throughout each home.

**Double-Height Framed Mould / Living**  
Stunning panoramic views combine seating spaces in a trans-coast design that's both inspiring and entirely comfortable.

**Formal Dining**  
Favorable views in an environment of inspired elegance and charm.

**Private Dining**  
Dine privately in a most relaxed, casual atmosphere.

**Show Kitchen and Preparation Kitchen**  
Clean design and intuitive technologies work hand in hand to make your signature show. Includes a work of art along with hidden, yet fully equipped prep kitchen.

**Master Bedroom with Grand Balcony and Private Terrace**

Enjoy a private retreat created to be worthy of royalty or heads of state.

**Master Twin Walk-in Closets for Ultimate Luxury**  
Reserve, considered Italian design in home and display your wardrobe wonderfully across two separate areas.

**Grand Guest Suites**  
Luxurious suites for family and guests, each with private ensuite bathroom and generous robe space.

**Family Room**  
A flexible space to entertain, play and relax.

**Treatment Area**  
Relax at your convenience with your own private spa treatment area.

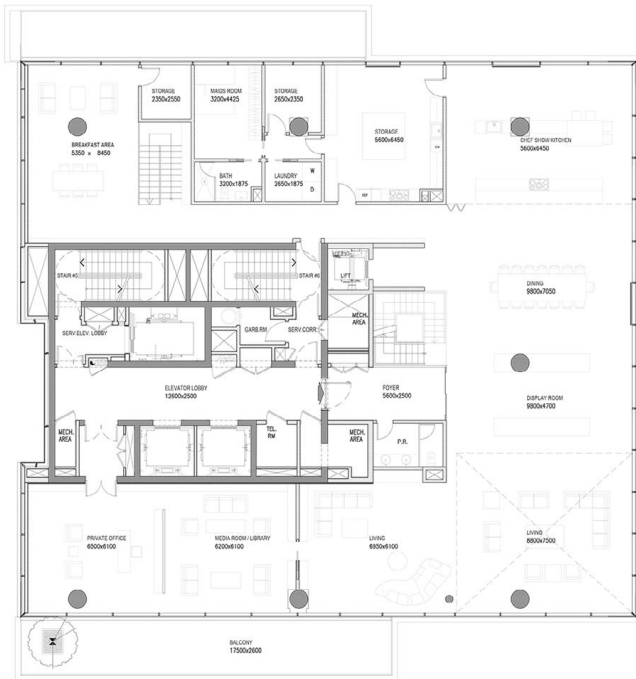
**Private Internal Lift**  
Complementing the internal stair case is a private lift running from your lower level to rooftop level.

**Luxurious Rooftop Garden and Landscaped Terraces**  
Escape to an outdoor haven of privacy and relaxation on your full-floor rooftop garden with infinity pool (7.4x3.5m) and water features. Features include dining, lounging and tanning decks plus open-air washrooms with showers.

**Staff Quarters**  
Twin staff quarters (2 persons).

# Burj Al Arab

## Lower Level



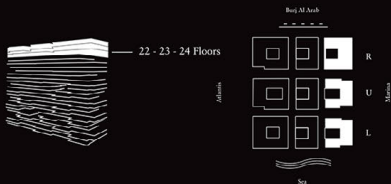
The floor representations and section and elevation drawings in this document are provided for illustrative purposes only and are subject to change without notice. All measured and stated areas of the units are self-certified, unless agreed otherwise in writing, and any references to bedrooms, meeting offices, open space, water features, pools, decks and covered terraces, dining areas, gyms, saunas, spas, hot tubs, fireplaces, bars, swimming pools and all forms of landscaping within this document are for illustrative purposes only. All square footage and dimensions are approximate only and may be subject to change at any time without notice. The square footage information may exceed the actual floor area. The floor area, specifications and details of any appliances, fittings and things made within the units are subject to the terms of the sale and purchase agreement and subject to change without notice. Occupants assume the right to make any change to the content of this document at any time without notice. Any reference to Project or a reference to a Luxury Development S.A.C. and/or the Project or group of companies, or the parent company.

# 5-Bedroom Duplex + Roof Terrace

Unit 2203 - 22nd / 23rd / 24th Floor  
5 Bedrooms - 8 Bathrooms - 6 Parking Spaces

Residences 12,907 sq. ft. 1,199 sq. mt.  
Terrace 7,791 sq. ft. 724 sq. mt.

Total 20,698 sq. ft. 1,923 sq. mt.



## 5-Bedroom Duplex Apartment Features

**Private Lift Lobby**  
Step into your own lift lobby designed by acclaimed Japanese designer firm, Suyei Partners, creating an environment of tranquility before you even enter your stunning residence.

**Grand Arrival and Secondary Access**  
A magnificent grand foyer serves as an impressive first step into a home of remarkable distinction. Plus secondary access for staff and service calls.

**Floor to Ceiling Windows**  
Sunning, 360-degree views flood each interior space with light and provide an inspiring backdrop throughout each home.

**Double-Height Framed Mould / Living**  
Sunning panoramic views combine seating spaces in a room-once design that's both inspiring and entirely comfortable.

**Formal Dining**  
Favorable spaces in an environment of inspired elegance and charm.

**Private Dining**  
Dine privately in a most relaxed, casual atmosphere.

**Show Kitchen and Preparation Kitchen**  
Clean design and intuitive technologies work hand in hand to make your signature show. Includes a work of art along with hidden, yet fully equipped prep kitchen.

**Master Bedroom with Grand Bathroom and Private Terrace**  
Enjoy a private domain created to be worthy of royalty or heads of state.

**Master Twin Walk-in Closets for Ultimate Luxury**  
Reserve, considered Italian design in home and display your personal wardrobe the access from separate areas.

**Grand Guest Suites**  
Luxurious suites for family and guests, each with private ensuite bathrooms and generous robe space.

**Family Room**  
A flexible space to entertain, play and relax.

**Treatment Area**  
Relax at your convenience with your own private spa treatment area.

**Private Internal Lift**  
Complementing the internal stair case is a private lift running from your lower level to rooftop level.

**Luxurious Rooftop Garden and Landscaped Terraces**  
Escape to an outdoor haven of privacy and relaxation on your full-floor rooftop garden with infinity pool (7.4x3.5m) and water features. Features include dining, lounging and tanning decks plus open-air washrooms with showers.

**Staff Quarters**  
Twin staff quarters (2 persons).

# Burj Al Arab

## Upper Level

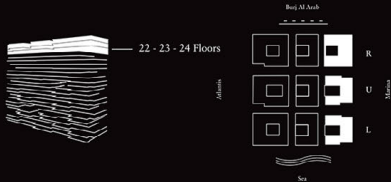


The floor representations and section and elevation drawings in this document are provided for illustrative purposes only and are subject to change without notice. All structural and related areas of the site are sold subdivided, unless agreed otherwise in writing, and any references to buildings, roads, offices, open space, water features, parks, decks and related areas, dining areas, golfing, water, sea, swimming, tennis, basketball, tennis and all forms of landscaping within this document are for illustrative purposes only. All square footage and dimensions are approximations only and may be subject to change at any time without notice. The square footage calculation herein may exceed the actual floor area. The drawings, specifications and details of any appliances, fittings and materials within the site are subject to the terms of the sale and purchase agreement and subject to change without notice. Occupants assume the right to any change to the content of this document at any time without notice. Any reference to this document is a reference to Emaar Development S.A.S. and/or the Emaar Group of companies, in the present context.

# 5-Bedroom Duplex + Roof Terrace

Unit 2203 - 22nd / 23rd / 24th Floor  
5 Bedrooms - 8 Bathrooms - 6 Parking Spaces

Residences	12,907 sq. ft. 1,199 sq. mt.
Terrace	7,791 sq. ft. 724 sq. mt.
<b>Total</b>	<b>20,698 sq. ft. 1,923 sq. mt.</b>



## 5-Bedroom Duplex Apartment Features

**Private Lift Lobby**  
Step into your own lift lobby designed by acclaimed Japanese designer firm, Suyei Private, creating an environment of tranquillity before you even enter your stunning residence.

**Grand Arrival and Secondary Access**  
A magnificent grand foyer serves as an impressive first step into a home of remarkable distinction. Plus secondary access for staff and service calls.

**Floor to Ceiling Windows**  
Stunning, 400-degree views flood each interior space with light and provide an inspiring backdrop throughout each home.

**Double-Height Furred Mould / Living**  
Stunning panoramic views combine seating spaces in a trans-cool design that's both inspiring and entirely comfortable.

**Formal Dining**  
Entertain guests in an environment of inspired elegance and charm.

**Private Dining**  
Dine privately in a most relaxed, casual atmosphere.

**Show Kitchen and Preparation Kitchen**  
Clean design and intuitive technologies work hand in hand to make your signature show. Includes a work of art along with hidden, yet fully equipped prep kitchen.

**Master Bedroom with Grand Bathroom and Private Terrace**  
Enter a private domain created to be worthy of royalty or heads of state.

**Master Twin Walk-in Closets for Ultimate Luxury**  
Reserve, considered Italian design in home and display your essential wardrobe across two separate areas.

**Grand Guest Suites**  
Luxurious suites for family and guests, each with private en-suite bathroom and generous robe space.

**Family Room**  
A flexible space to entertain, play and relax.

**Treatment Area**  
Relax at your convenience with your own private spa treatment area.

**Private Internal Lift**  
Completing the internal stair case is a private lift running from your lower level to rooftop level.

**Luxurious Rooftop Garden and Landscaped Terraces**  
Escape to an outdoor haven of privacy and relaxation on your full-floor rooftop garden with infinity pool (7.4x3.5m) and water features. Features include dining, lounge and tanning decks plus open-air washrooms with showers.

**Staff Quarters**  
Twin staff quarters (2 persons).

# Burj Al Arab

## Roof Level



The floor representations and metric and metric dimensions in this document are provided for illustrative purposes only and are subject to change without notice. All covered and reserved areas of the site are sold subdivided, unless agreed otherwise in writing, and any reference to balconies, terraces, offices, open areas, water features, pools, decks and reserved areas, dining areas, golfers, sofas, set tables, chairs, beds, landscaping, plants and all forms of landscaping within this document are for illustrative purposes only. All square footage and dimensions are approximate only and may be subject to change at any time without notice. The square footage calculation in this document may exceed the actual floor area. The floor area, specifications and details of the appliances, fittings and fixtures are subject to the terms of the sale and purchase agreement and subject to change without notice. Occupier reserves the right to make any change to the content of this document at any time without notice. Any reference to Burj Al Arab is a reference to Burj Al Arab (Dubai) Properties LLC or the Burj Al Arab group of companies, in the current register.