



PALACE

RESIDENCES
DUBAI CREEK
HARBOUR

FLOOR PLANS

EMAAR

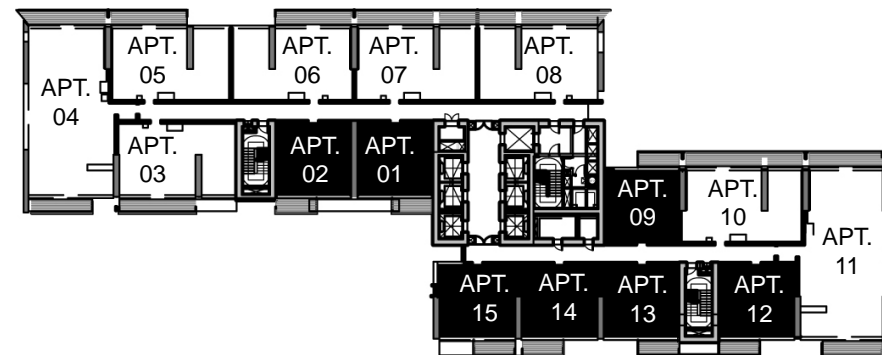
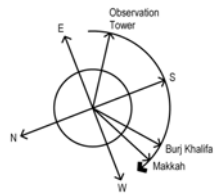
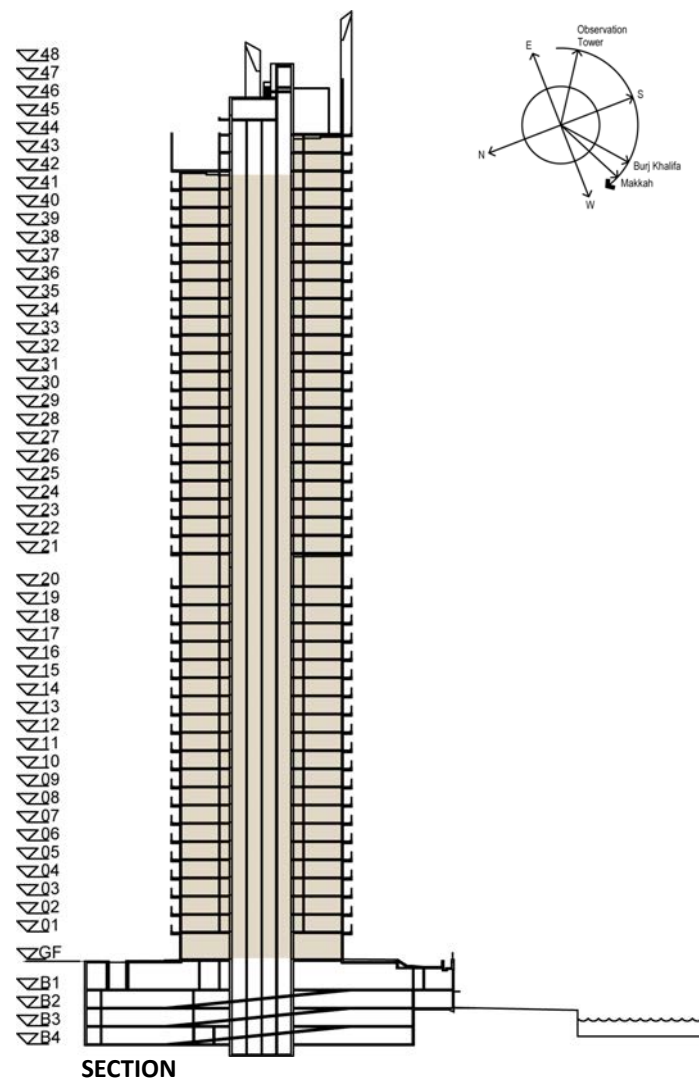


PALACE RESIDENCES DUBAI CREEK HARBOUR

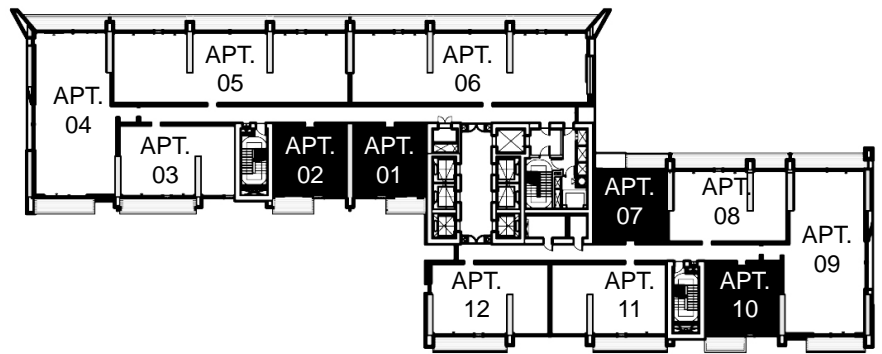
I BEDROOM

LEVEL I TO 43

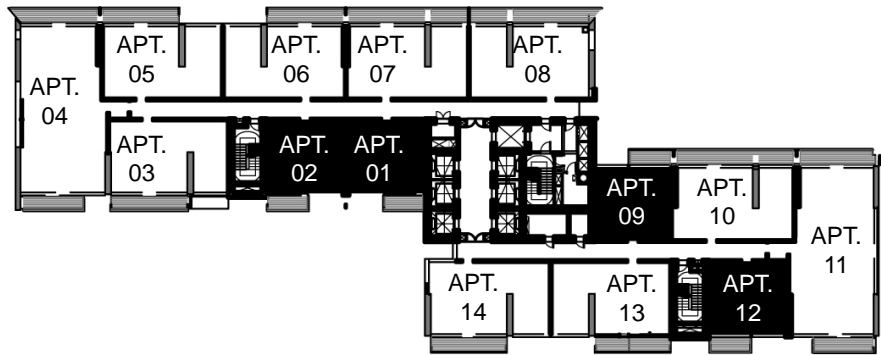
LEVEL	UNIT NO	UNIT AREA		BALCONY AREA		TOTAL AREA	
		SQM.	SQFT.	SQM.	SQFT.	SQM.	SQFT.
TYPICAL 1-19	UNIT 01	57.59	619.89	7.08	76.21	64.67	696.10
	UNIT 02	57.53	619.25	7.52	80.94	65.05	700.19
	UNIT 09	56.87	612.14	7.81	84.07	64.68	696.21
	UNIT 12	57.91	623.34	7.57	81.48	65.48	704.82
	UNIT 13	57.75	621.62	7.59	81.70	65.34	703.32
	UNIT 14	58.22	626.67	7.59	81.70	65.81	708.37
TYPICAL 21-39	UNIT 01	57.59	619.89	7.08	76.21	64.67	696.10
	UNIT 02	57.53	619.25	7.52	80.94	65.05	700.19
	UNIT 09	56.87	612.14	7.81	84.07	64.68	696.21
	UNIT 12	57.92	623.45	7.57	81.48	65.49	704.93
TYPICAL 40-41	UNIT 01	57.59	619.89	7.08	76.21	64.67	696.10
	UNIT 02	57.53	619.25	7.52	80.94	65.05	700.19
	UNIT 07	56.87	612.14	7.81	84.07	64.68	696.21
	UNIT 10	57.92	623.45	7.57	81.48	65.49	704.93
TYPICAL 42-43	UNIT 01	57.59	619.89	7.08	76.21	64.67	696.10
	UNIT 02	57.53	619.25	7.52	80.94	65.05	700.19



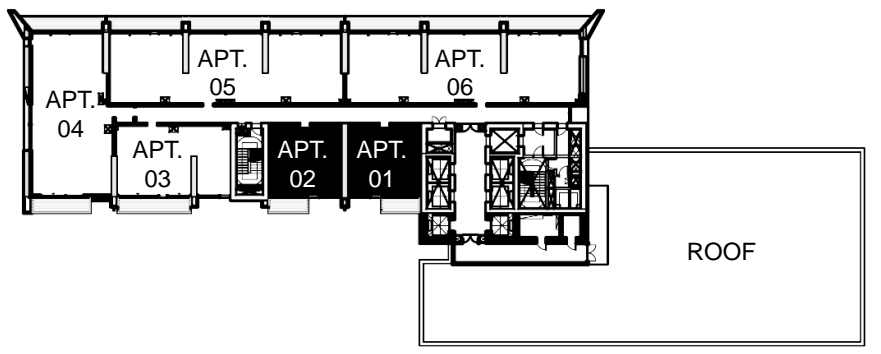
KEY PLAN 1-19



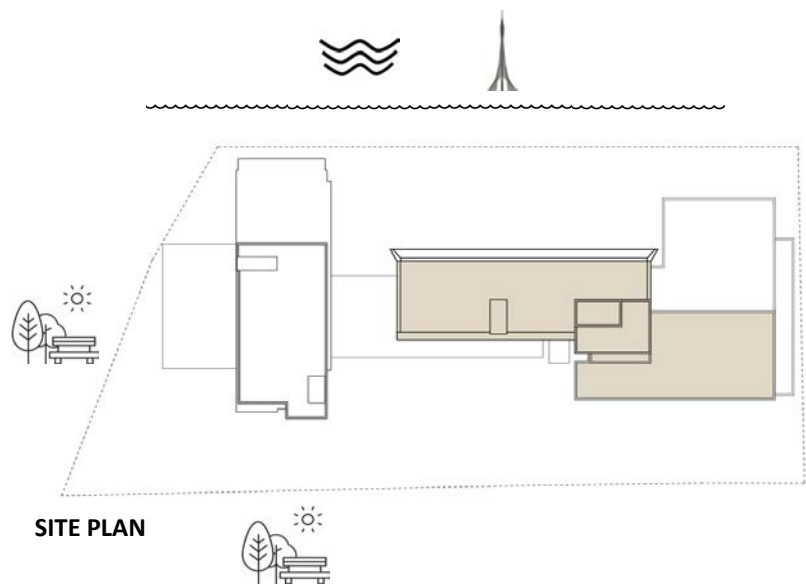
KEY PLAN 40-41



KEY PLAN 21-39



KEY PLAN 42-43



SITE PLAN

FLOOR PLAN 1. All dimensions are in imperial and metric, and measured from finish to finish excluding construction tolerances. 2. All materials, dimensions, and drawings are approximate only. 3. Information is subject to change without notice, at developer's absolute discretion. 4. Actual area may vary from the stated area. 5. Drawings not to scale. 6. All images used are for illustrative purposes only and do not represent the actual size, features, specifications, fittings, and furnishings. 7. The developer reserves the right to make revisions / alterations, at it's absolute discretion, without any liability whatsoever.

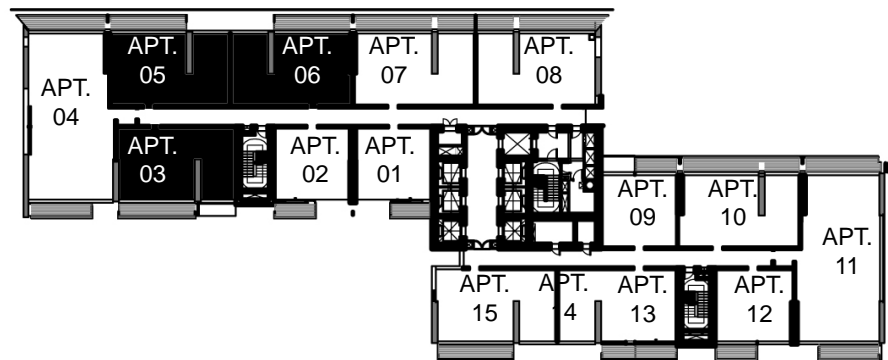
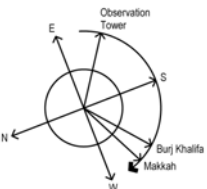
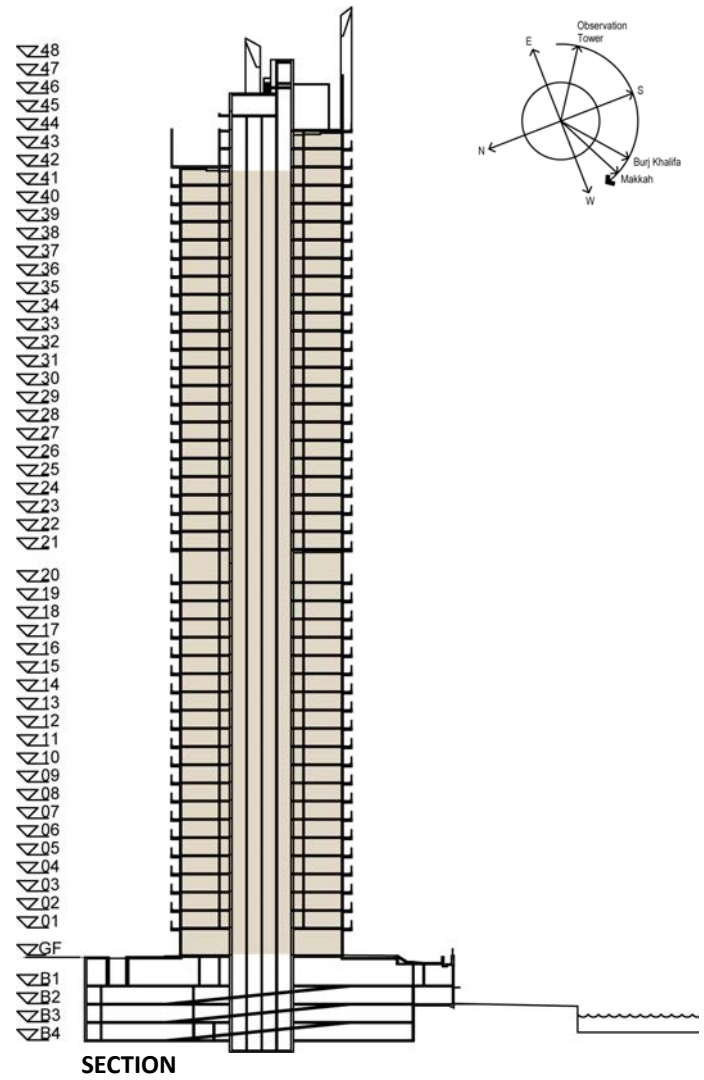
EMAAR

PALACE RESIDENCES DUBAI CREEK HARBOUR

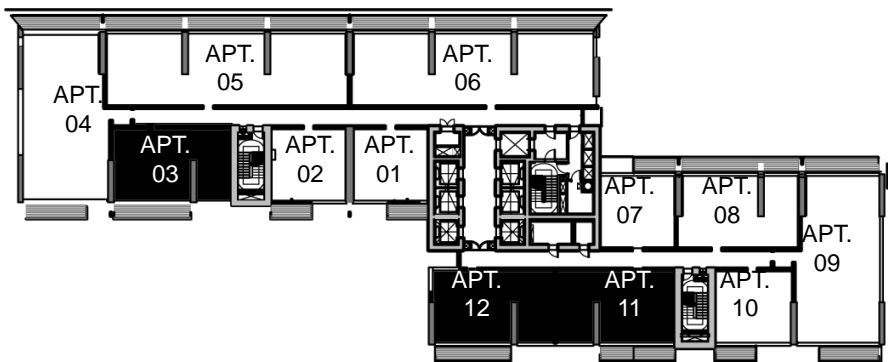
2 BEDROOM - TYPE A

LEVEL 1 TO 43

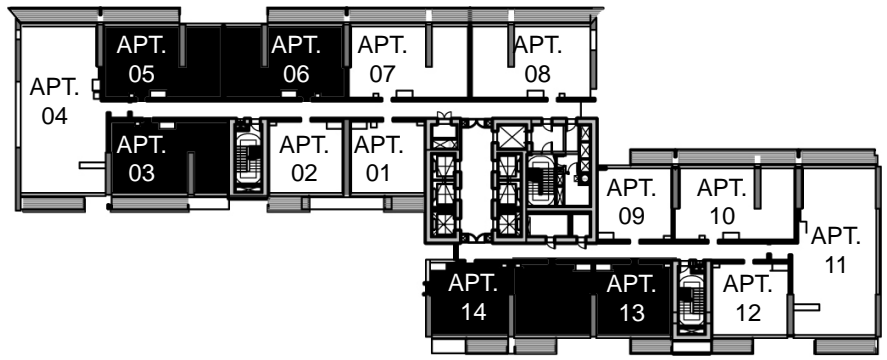
LEVEL	UNIT NO	UNIT AREA		BALCONY AREA		TOTAL AREA	
		SQM.	SQFT.	SQM.	SQFT.	SQM.	SQFT.
TYPICAL 1-19	UNIT 03	88.39	951.42	13.77	148.22	102.16	1099.64
	UNIT 05	87.74	944.43	13.84	148.97	101.58	1093.40
	UNIT 06	88.56	953.25	13.84	148.97	102.40	1102.22
TYPICAL 21-39	UNIT 03	88.39	951.42	13.77	148.22	102.16	1099.64
	UNIT 05	87.74	944.43	13.84	148.97	101.58	1093.40
	UNIT 06	88.56	953.25	13.84	148.97	102.40	1102.22
	UNIT 13	88.30	950.45	13.43	144.56	101.73	1095.01
TYPICAL 40-41	UNIT 14	88.86	956.48	13.43	144.56	102.29	1101.04
	UNIT 03	88.39	951.42	13.66	147.04	102.05	1098.46
	UNIT 11	88.30	950.45	13.43	144.56	101.73	1095.01
TYPICAL 42-43	UNIT 12	88.86	956.48	13.43	144.56	102.29	1101.04
	UNIT 03	88.39	951.42	13.66	147.04	102.05	1098.46



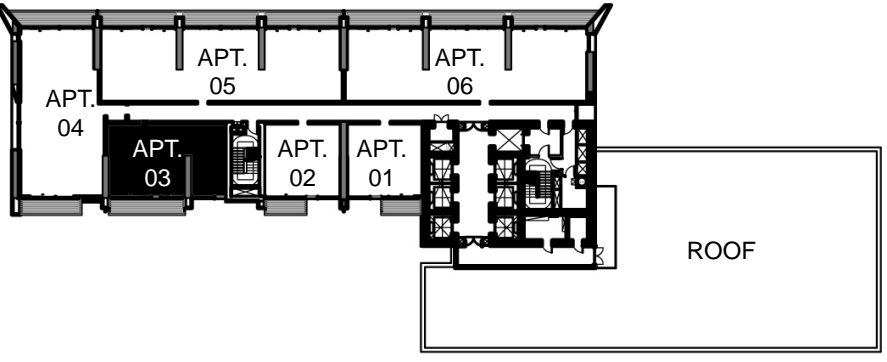
KEY PLAN 1-19



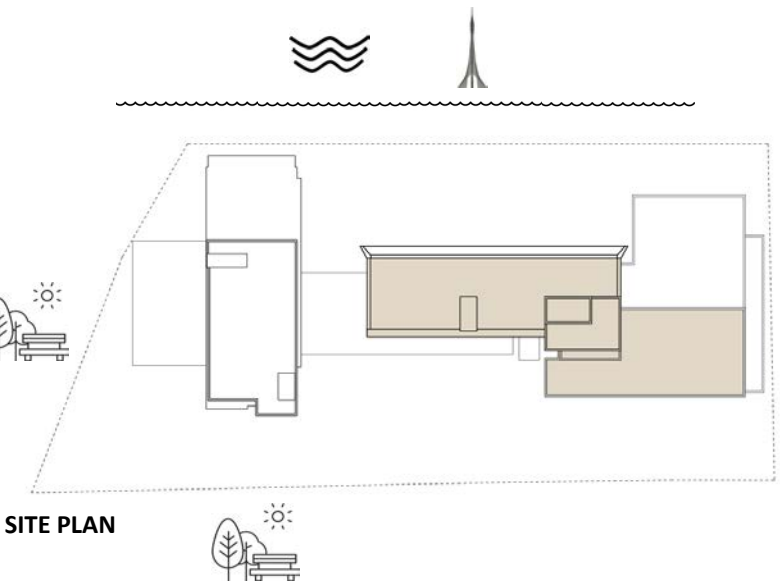
KEY PLAN 40-41



KEY PLAN 21-39



KEY PLAN 42-43

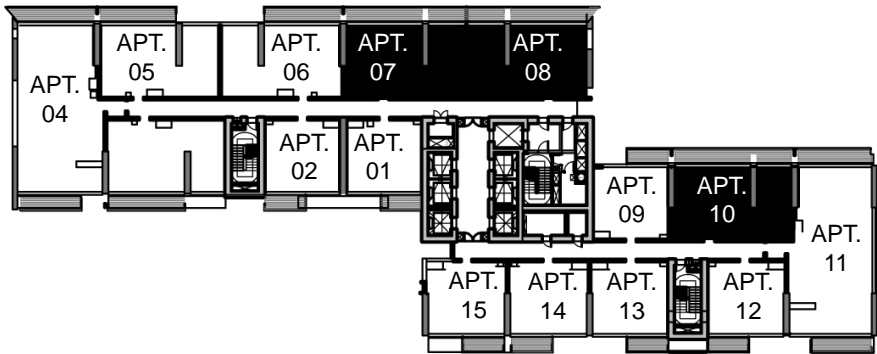
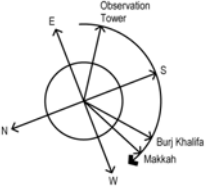
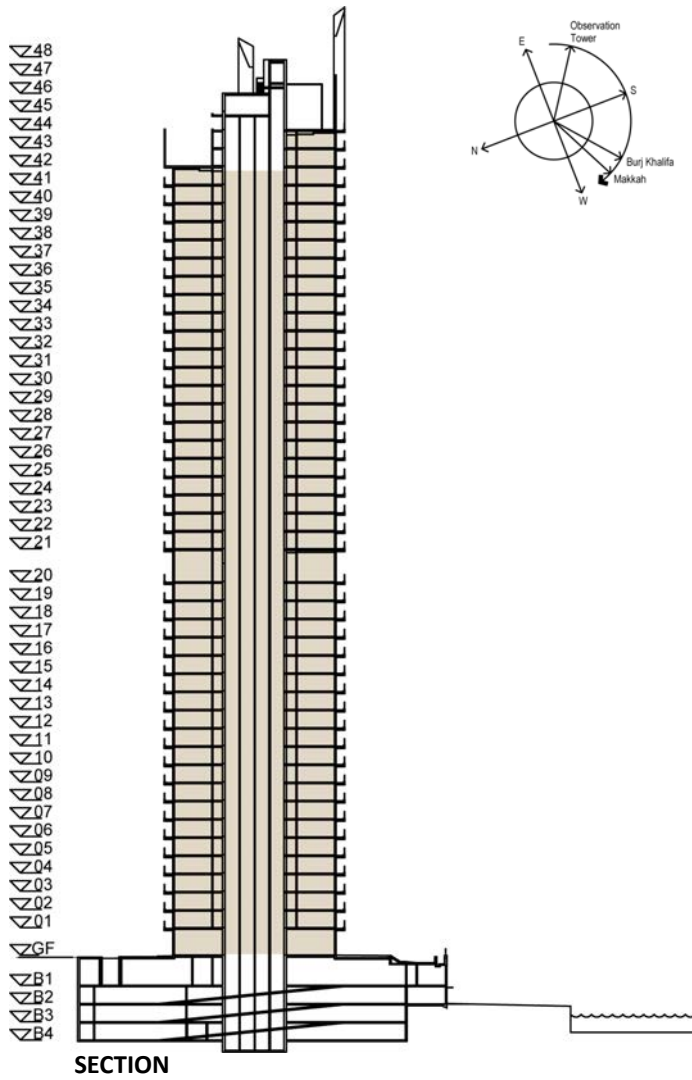


FLOOR PLAN 1. All dimensions are in imperial and metric, and measured from finish to finish excluding construction tolerances. 2. All materials, dimensions, and drawings are approximate only. 3. Information is subject to change without notice, at developer's absolute discretion. 4. Actual area may vary from the stated area. 5. Drawings not to scale. 6. All images used are for illustrative purposes only and do not represent the actual size, features, specifications, fittings, and furnishings. 7. The developer reserves the right to make revisions / alterations, at it's absolute discretion, without any liability whatsoever.

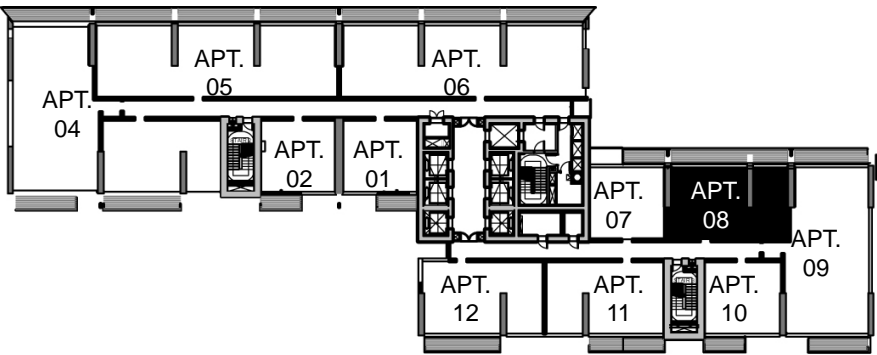
PALACE RESIDENCES
DUBAI CREEK HARBOUR
2 BEDROOM - TYPE B

LEVEL 1 TO 41

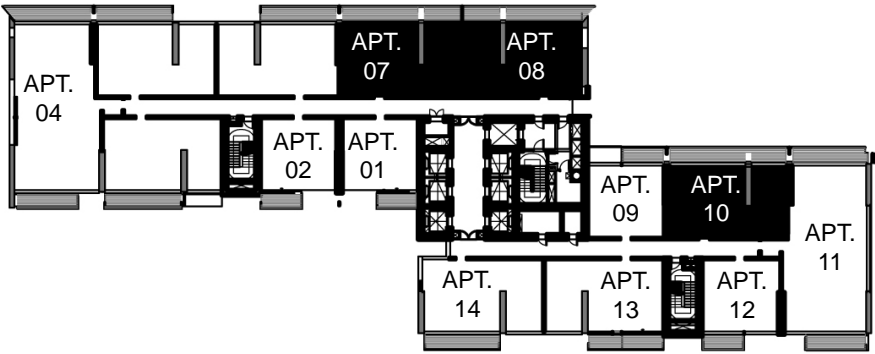
LEVEL	UNIT NO	UNIT AREA		BALCONY AREA		TOTAL AREA	
		SQM.	SQFT.	SQM.	SQFT.	SQM.	SQFT.
TYPICAL 1-19	UNIT 07	88.56	953.25	20.85	224.43	109.41	1177.68
	UNIT 08	88.13	948.62	21.77	234.33	109.90	1182.95
	UNIT 10	88.61	953.79	20.50	220.66	109.11	1174.45
TYPICAL 21-39	UNIT 07	88.56	953.25	20.85	224.43	109.41	1177.68
	UNIT 08	88.13	948.62	21.77	234.33	109.90	1182.95
	UNIT 10	88.61	953.79	20.50	220.66	109.11	1174.45
TYPICAL 40-41	UNIT 08	88.61	953.79	20.50	220.66	109.11	1174.45



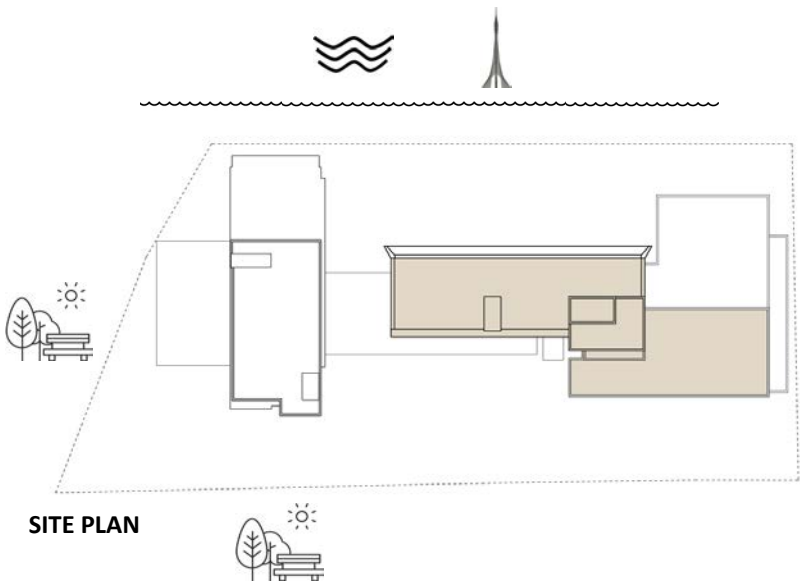
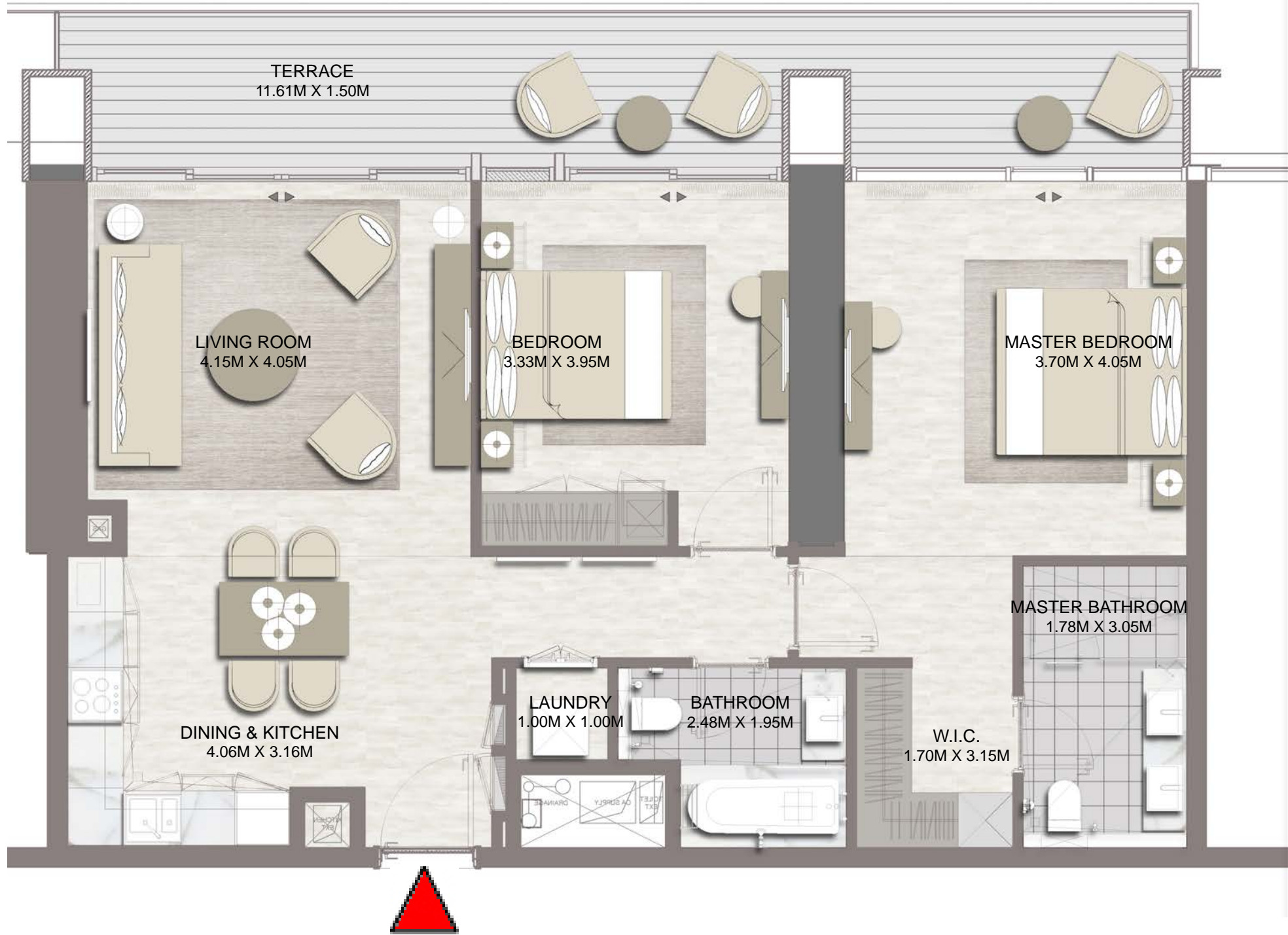
KEY PLAN 1-19



KEY PLAN 40-41



KEY PLAN 21-39



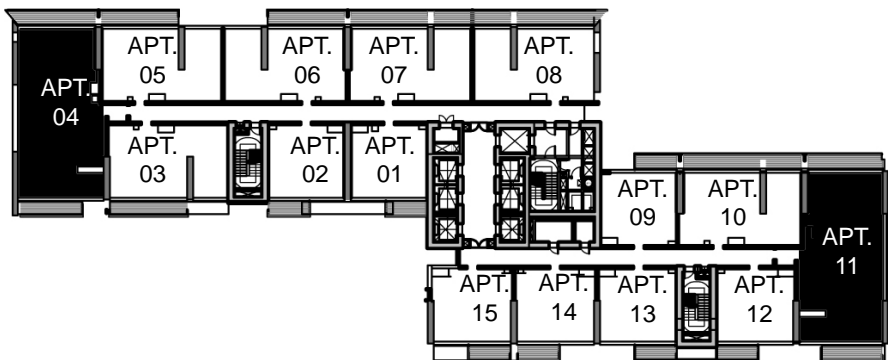
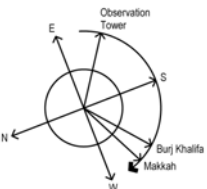
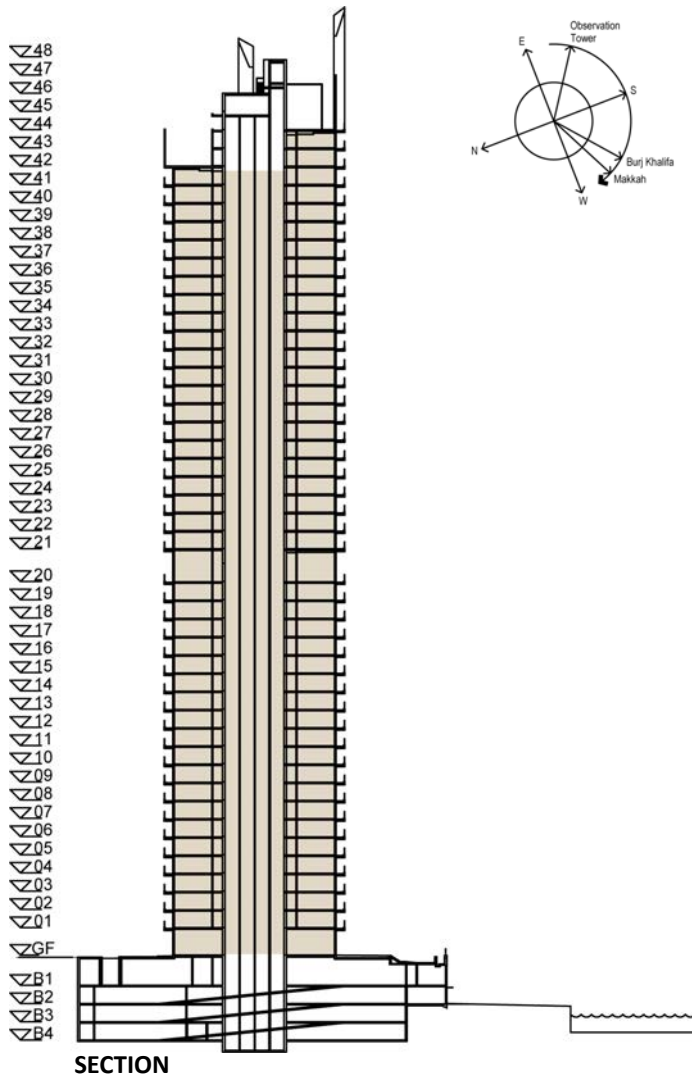
FLOOR PLAN 1. All dimensions are in imperial and metric, and measured from finish to finish excluding construction tolerances. 2. All materials, dimensions, and drawings are approximate only. 3. Information is subject to change without notice, at developer's absolute discretion. 4. Actual area may vary from the stated area. 5. Drawings not to scale. 6. All images used are for illustrative purposes only and do not represent the actual size, features, specifications, fittings, and furnishings. 7. The developer reserves the right to make revisions / alterations, at it's absolute discretion, without any liability whatsoever.

PALACE RESIDENCES DUBAI CREEK HARBOUR

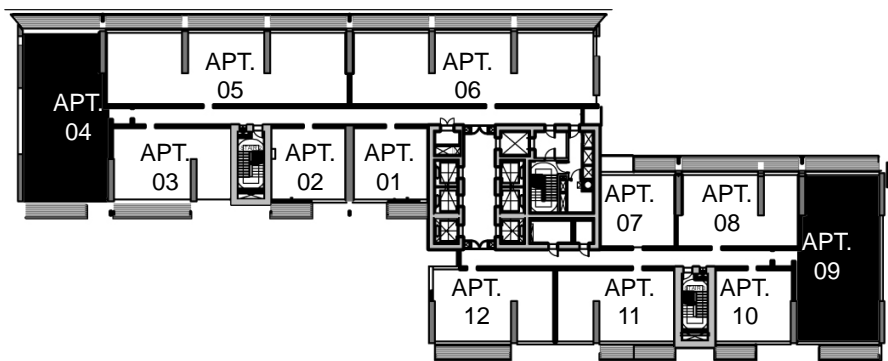
3 BEDROOM

LEVEL 1 TO 43

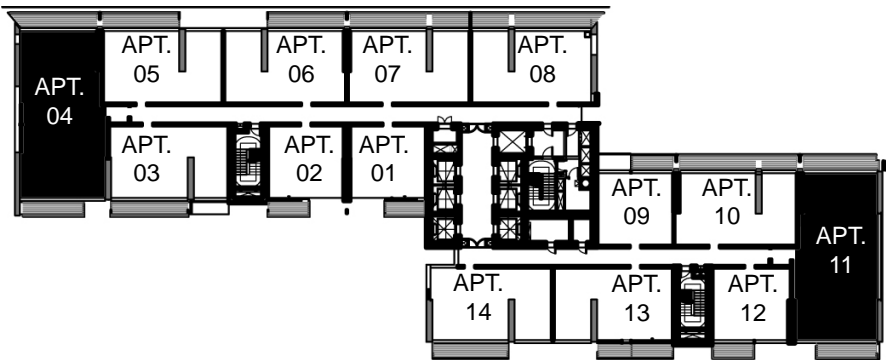
LEVEL	UNIT NO	UNIT AREA		BALCONY AREA		TOTAL AREA	
		SQM.	SQFT.	SQM.	SQFT.	SQM.	SQFT.
TYPICAL 1-19	UNIT 04	143.19	1541.28	25.07	269.85	168.26	1811.13
	UNIT 11	140.61	1513.51	24.24	260.92	164.85	1774.43
TYPICAL 21-39	UNIT 04	143.19	1541.28	25.07	269.85	168.26	1811.13
	UNIT 11	140.61	1513.51	24.22	260.70	164.83	1774.21
TYPICAL 40-41	UNIT 04	143.19	1541.28	25.04	269.53	168.23	1810.81
	UNIT 09	140.61	1513.51	24.11	259.52	164.72	1773.03
TYPICAL 42-43	UNIT 04	143.21	1541.50	25.04	269.53	168.25	1811.03



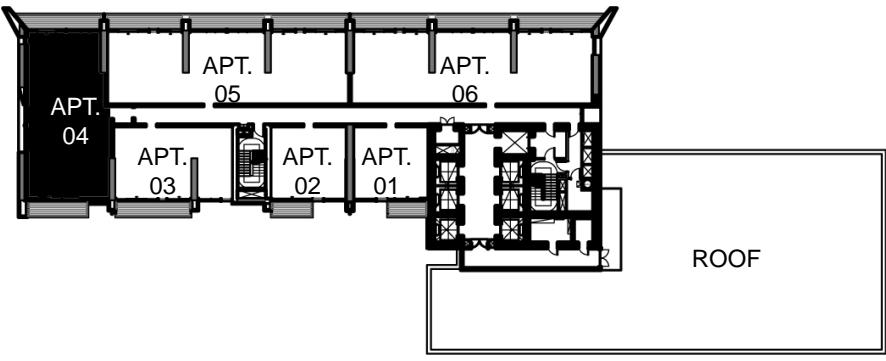
KEY PLAN 1-19



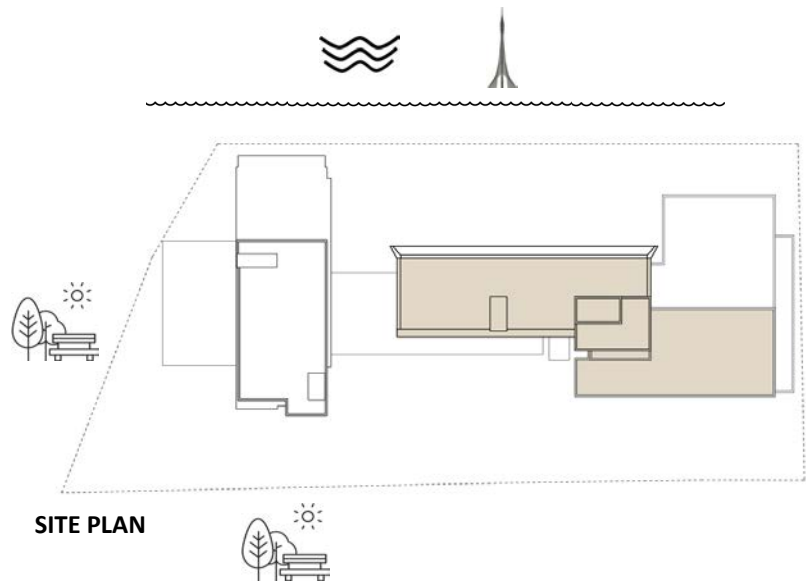
KEY PLAN 40-41



KEY PLAN 21-39



KEY PLAN 42-43



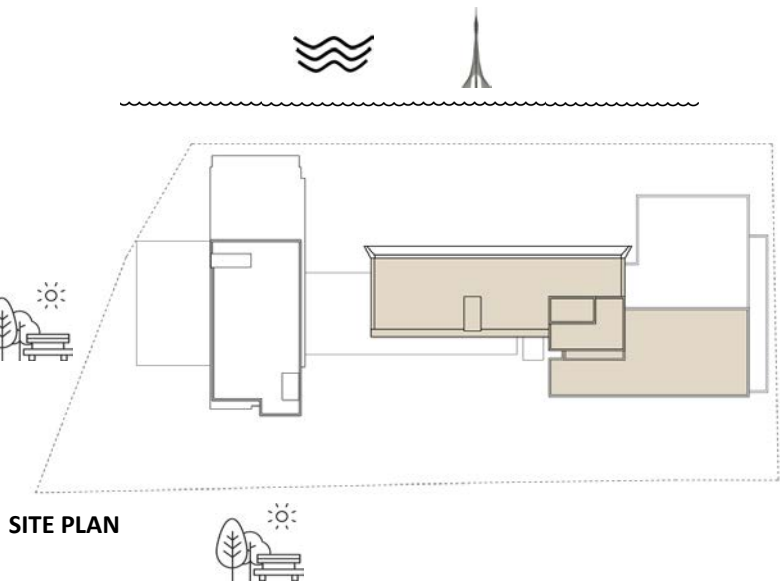
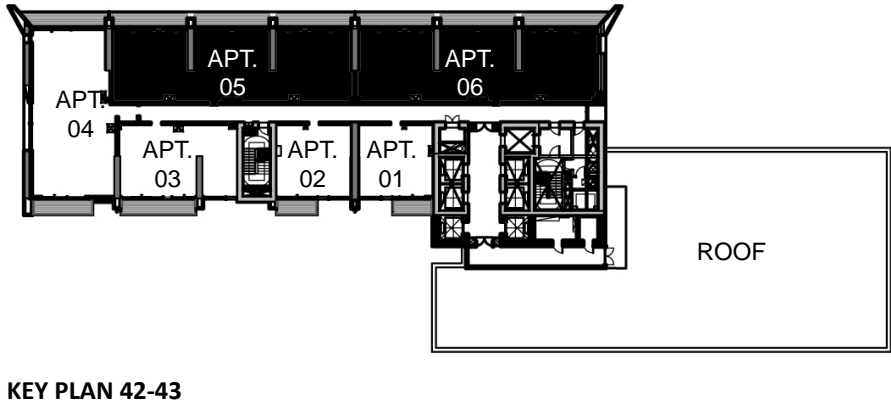
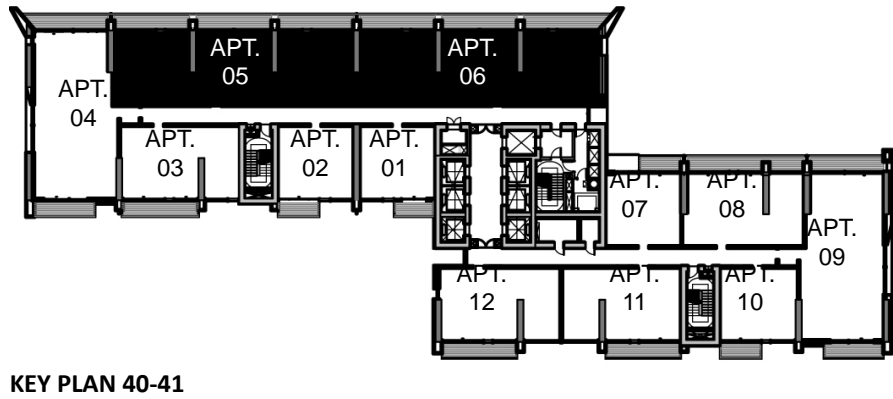
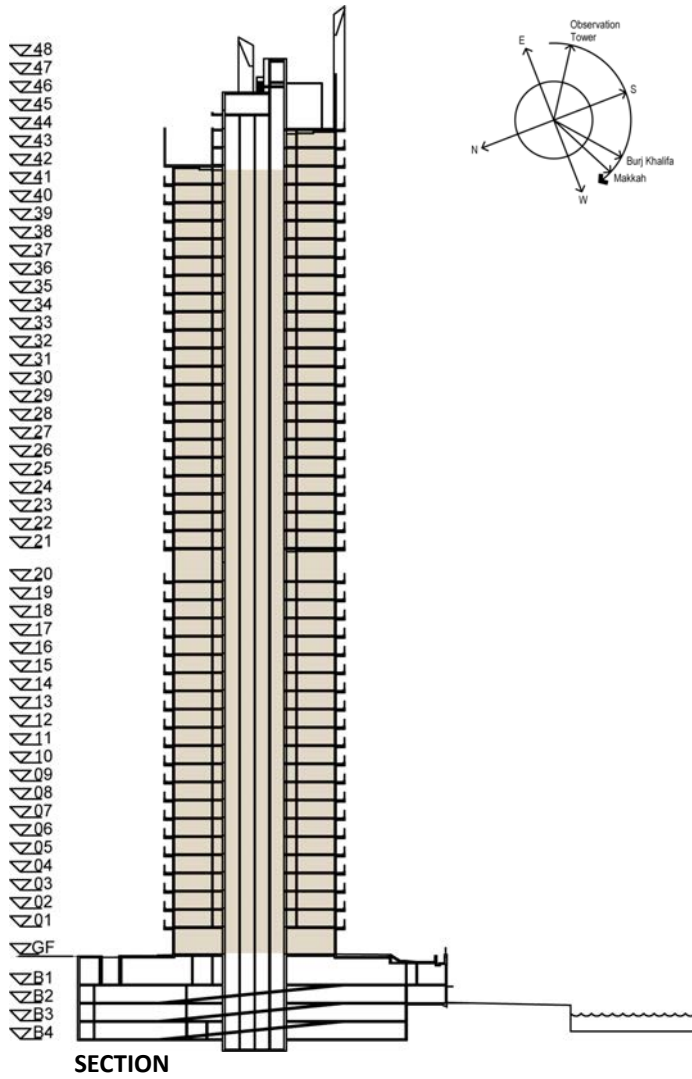
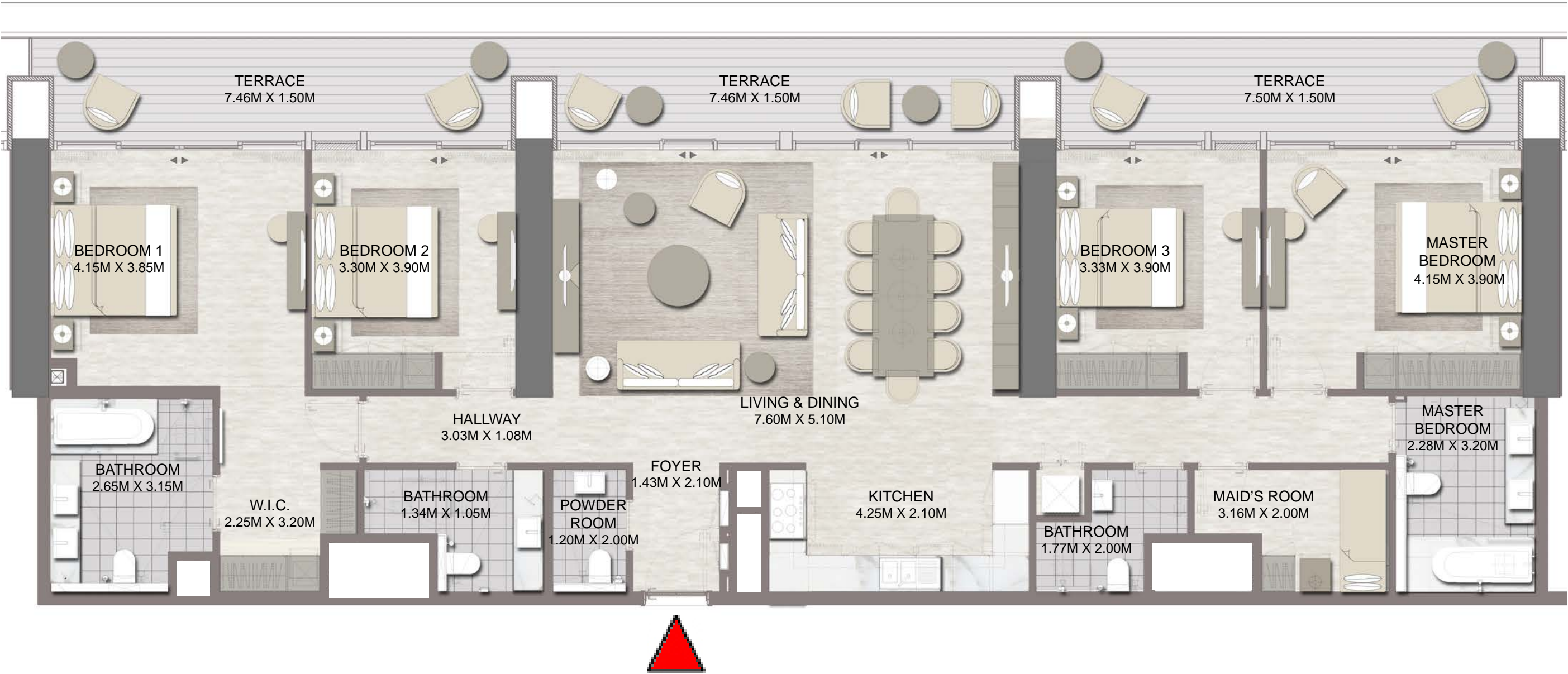
FLOOR PLAN 1. All dimensions are in imperial and metric, and measured from finish to finish excluding construction tolerances. 2. All materials, dimensions, and drawings are approximate only. 3. Information is subject to change without notice, at developer's absolute discretion. 4. Actual area may vary from the stated area. 5. Drawings not to scale. 6. All images used are for illustrative purposes only and do not represent the actual size, features, specifications, fittings, and furnishings. 7. The developer reserves the right to make revisions / alterations, at it's absolute discretion, without any liability whatsoever.

PALACE RESIDENCES DUBAI CREEK HARBOUR

4 BEDROOM

LEVEL 40 TO 43

LEVEL	UNIT NO	UNIT AREA		BALCONY AREA		TOTAL AREA	
		SQM.	SQFT.	SQM.	SQFT.	SQM.	SQFT.
TYPICAL 40-41	UNIT 05	175.99	1894.34	41.70	448.86	217.69	2343.20
	UNIT 06	176.38	1898.54	42.62	458.76	219.00	2357.30
TYPICAL 42-43	UNIT 05	175.99	1894.34	41.70	448.86	217.69	2343.20
	UNIT 06	176.38	1898.54	42.62	458.76	219.00	2357.30



FLOOR PLAN 1. All dimensions are in imperial and metric, and measured from finish to finish excluding construction tolerances. 2. All materials, dimensions, and drawings are approximate only. 3. Information is subject to change without notice, at developer's absolute discretion. 4. Actual area may vary from the stated area. 5. Drawings not to scale. 6. All images used are for illustrative purposes only and do not represent the actual size, features, specifications, fittings, and furnishings. 7. The developer reserves the right to make revisions / alterations, at it's absolute discretion, without any liability whatsoever.



For more information or to book a viewing tour get in touch
with our Off Plan & Investment team today:

+971 4 302 5800

info@hausandhaus.com

www.hausandhaus.com

'Agency of the Year 2020 Dubai' – Voted by @bayut and dubizzle