

BUILDING 1

EMAAR

DUBAI CREEK  
HARBOUR

SURF AT  
CREEK BEACH

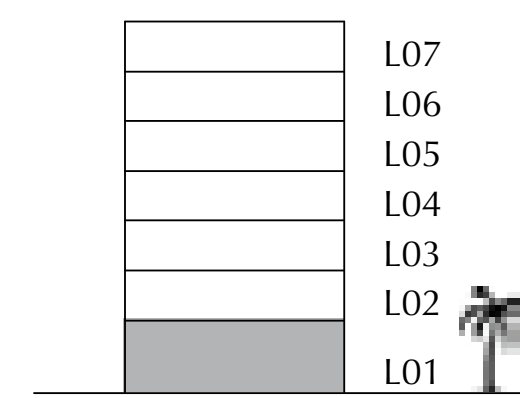
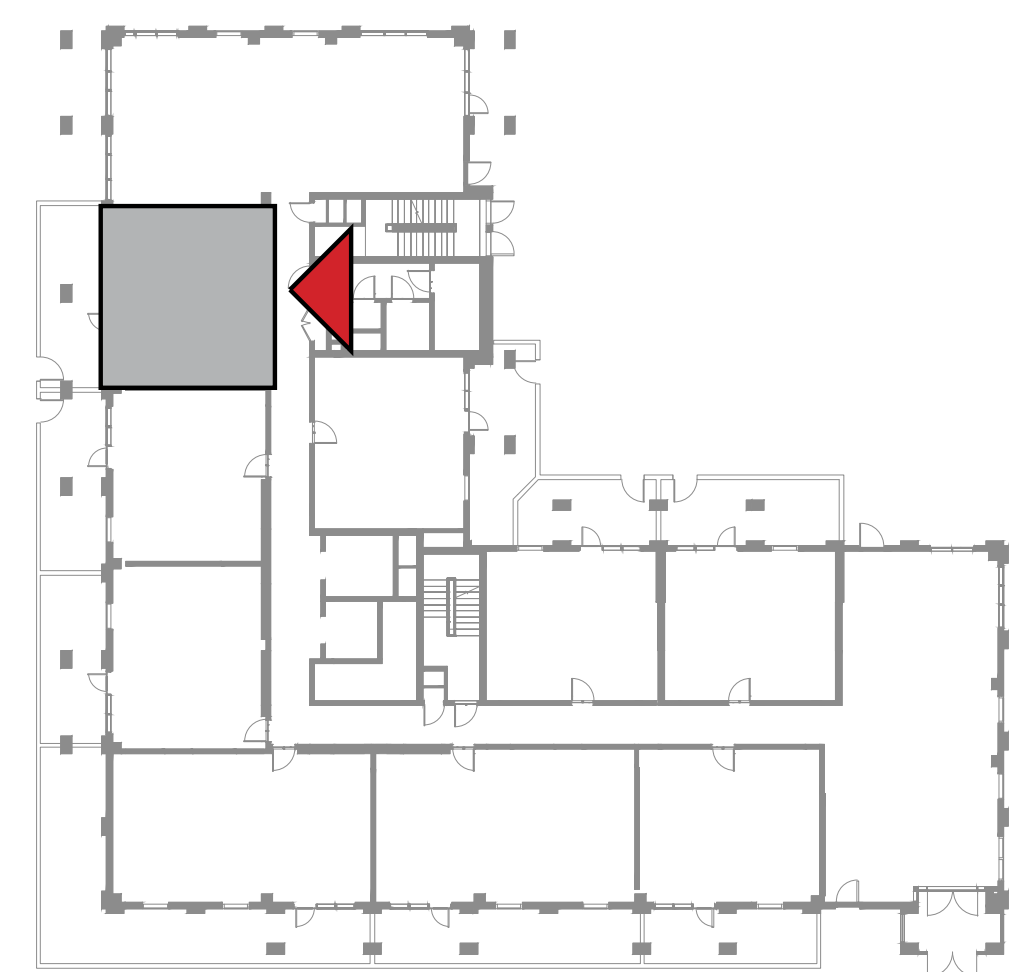
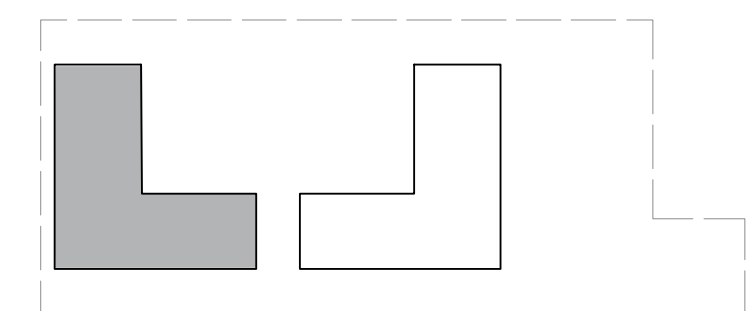
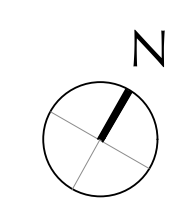
BUILDING 1

LEVEL 1

UNIT 101

1 BEDROOM

|                |             |               |
|----------------|-------------|---------------|
| APARTMENT AREA | 55.71 SQ.M. | 599.66 SQ.FT. |
| BALCONY AREA   | 27.15 SQ.M. | 292.24 SQ.FT. |
| TOTAL AREA     | 82.86 SQ.M. | 891.90 SQ.FT. |



FLOOR PLAN 1. All dimensions are in imperial and metric, and measured from finish to finish excluding construction tolerances. 2. All materials, dimensions, and drawings are approximate only. 3. Information is subject to change without notice, at developer's absolute discretion. 4. Actual area may vary from the stated area. 5. Drawings not to scale. 6. All images used are for illustrative purposes only and do not represent the actual size, features, specifications, fittings, and furnishings. 7. The developer reserves the right to make revisions / alterations, at it's absolute discretion, without any liability whatsoever.

DUBAI CREEK  
HARBOUR

SURF AT  
CREEK BEACH

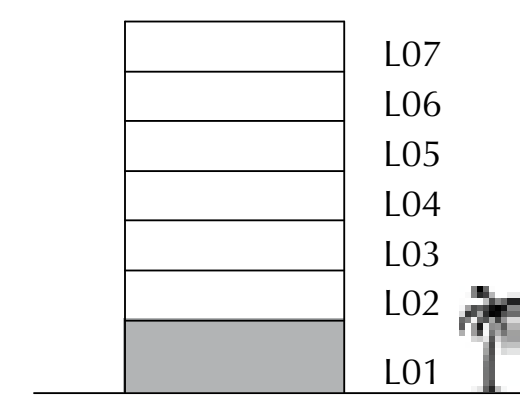
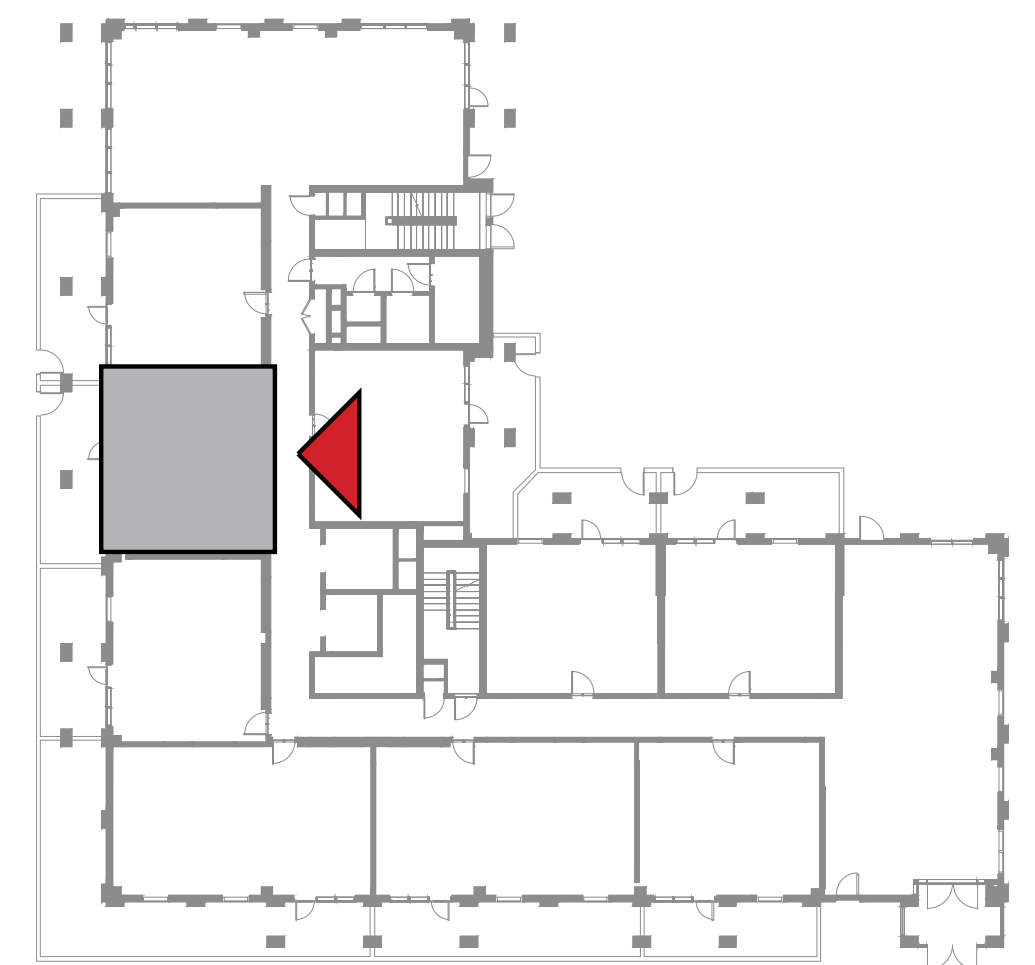
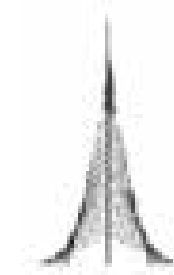
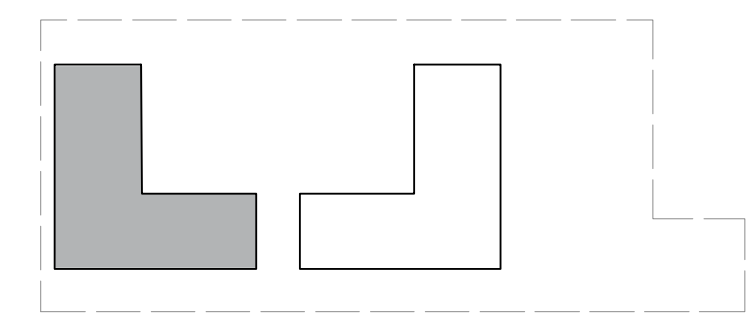
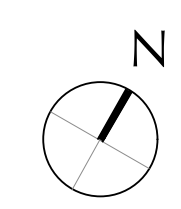
BUILDING 1

LEVEL 1

UNIT 102

1 BEDROOM

|                |             |               |
|----------------|-------------|---------------|
| APARTMENT AREA | 55.99 SQ.M. | 602.67 SQ.FT. |
| BALCONY AREA   | 26.66 SQ.M. | 286.97 SQ.FT. |
| TOTAL AREA     | 82.65 SQ.M. | 889.64 SQ.FT. |



FLOOR PLAN 1. All dimensions are in imperial and metric, and measured from finish to finish excluding construction tolerances. 2. All materials, dimensions, and drawings are approximate only. 3. Information is subject to change without notice, at developer's absolute discretion. 4. Actual area may vary from the stated area. 5. Drawings not to scale. 6. All images used are for illustrative purposes only and do not represent the actual size, features, specifications, fittings, and furnishings. 7. The developer reserves the right to make revisions / alterations, at it's absolute discretion, without any liability whatsoever.



DUBAI CREEK  
HARBOUR

SURF AT  
CREEK BEACH

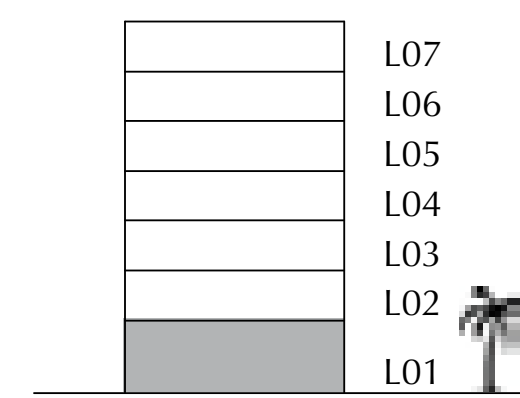
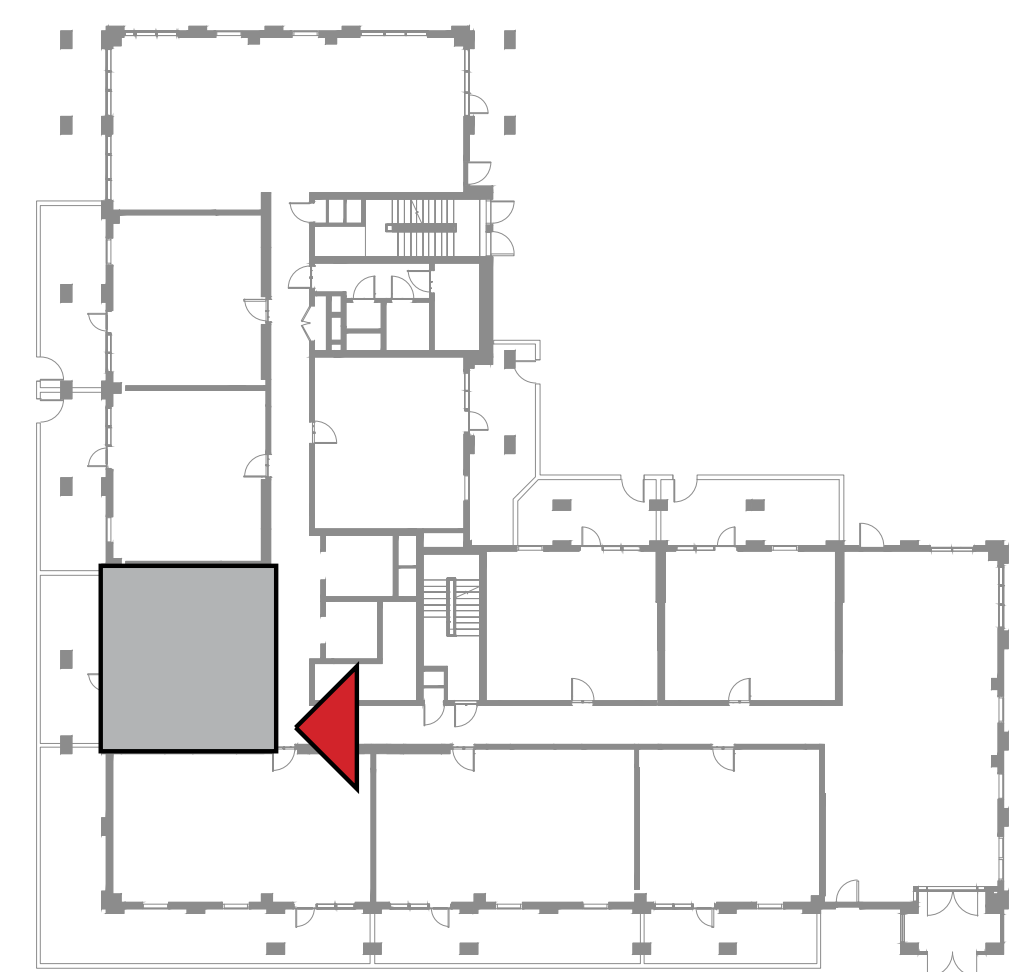
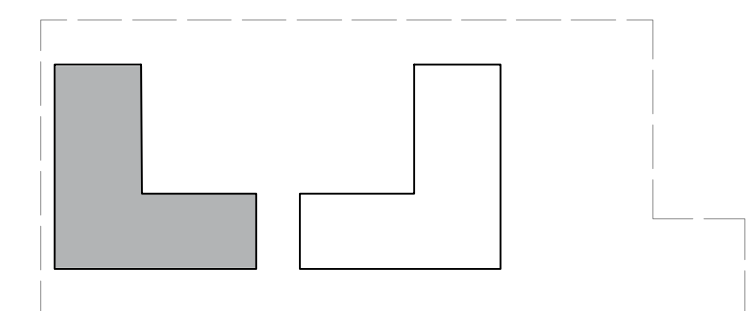
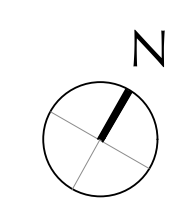
BUILDING 1

LEVEL 1

UNIT 103

1 BEDROOM

|                |             |               |
|----------------|-------------|---------------|
| APARTMENT AREA | 59.78 SQ.M. | 643.47 SQ.FT. |
| BALCONY AREA   | 25.03 SQ.M. | 269.42 SQ.FT. |
| TOTAL AREA     | 84.81 SQ.M. | 912.89 SQ.FT. |



FLOOR PLAN 1. All dimensions are in imperial and metric, and measured from finish to finish excluding construction tolerances. 2. All materials, dimensions, and drawings are approximate only. 3. Information is subject to change without notice, at developer's absolute discretion. 4. Actual area may vary from the stated area. 5. Drawings not to scale. 6. All images used are for illustrative purposes only and do not represent the actual size, features, specifications, fittings, and furnishings. 7. The developer reserves the right to make revisions / alterations, at it's absolute discretion, without any liability whatsoever.

DUBAI CREEK  
HARBOUR

SURF AT  
CREEK BEACH

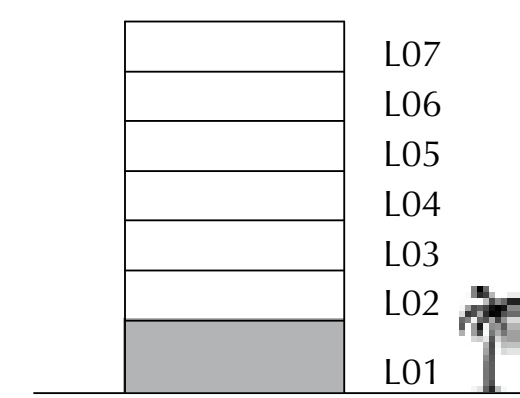
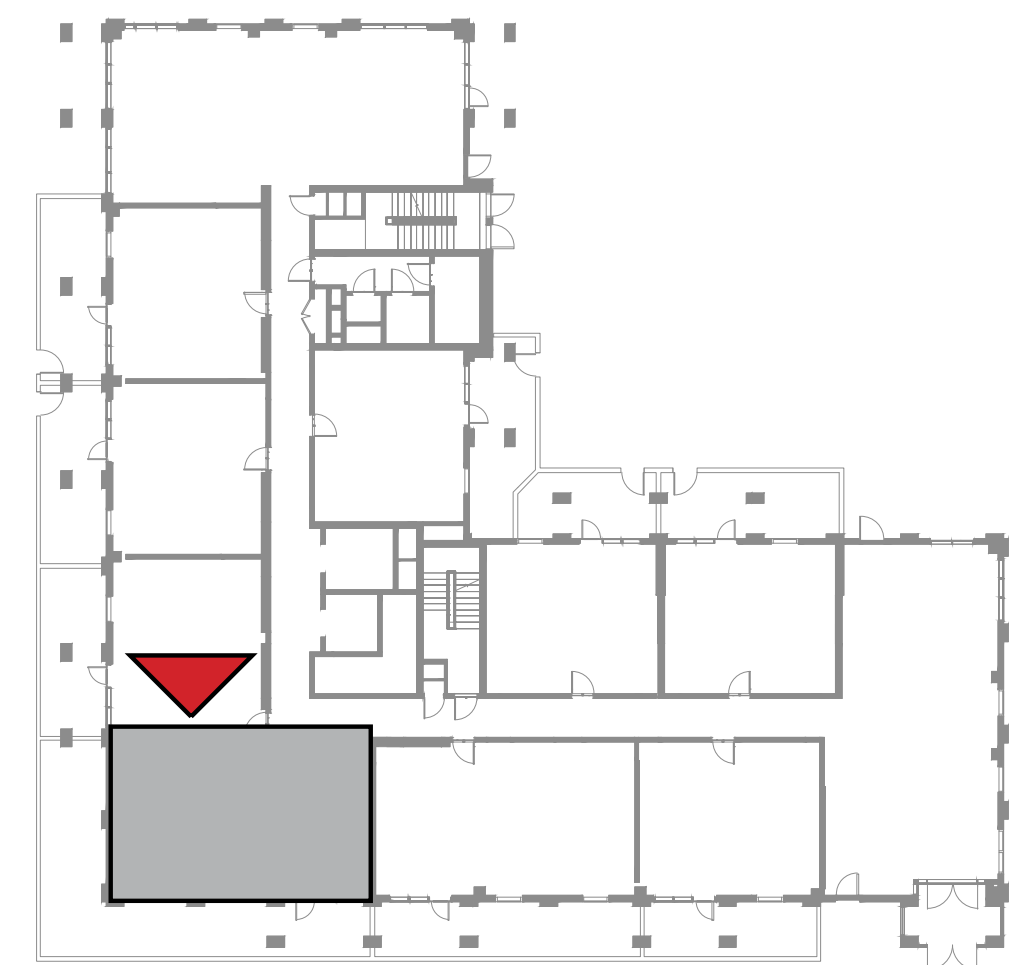
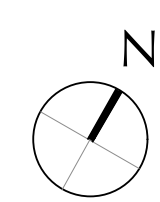
BUILDING 1

LEVEL 1

UNIT 104

2 BEDROOM

|                |              |                |
|----------------|--------------|----------------|
| APARTMENT AREA | 83.57 SQ.M.  | 899.54 SQ.FT.  |
| BALCONY AREA   | 65.21 SQ.M.  | 701.91 SQ.FT.  |
| TOTAL AREA     | 148.78 SQ.M. | 1601.45 SQ.FT. |



FLOOR PLAN 1. All dimensions are in imperial and metric, and measured from finish to finish excluding construction tolerances. 2. All materials, dimensions, and drawings are approximate only. 3. Information is subject to change without notice, at developer's absolute discretion. 4. Actual area may vary from the stated area. 5. Drawings not to scale. 6. All images used are for illustrative purposes only and do not represent the actual size, features, specifications, fittings, and furnishings. 7. The developer reserves the right to make revisions / alterations, at it's absolute discretion, without any liability whatsoever.



DUBAI CREEK  
HARBOUR

SURF AT  
CREEK BEACH

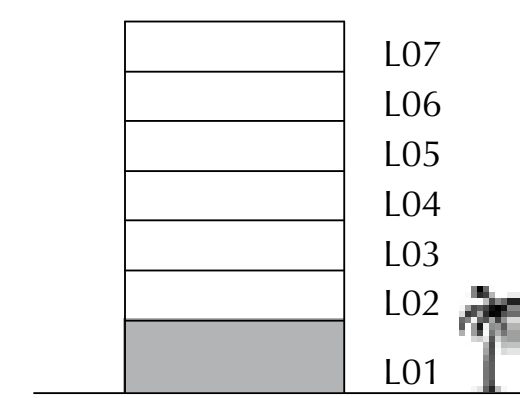
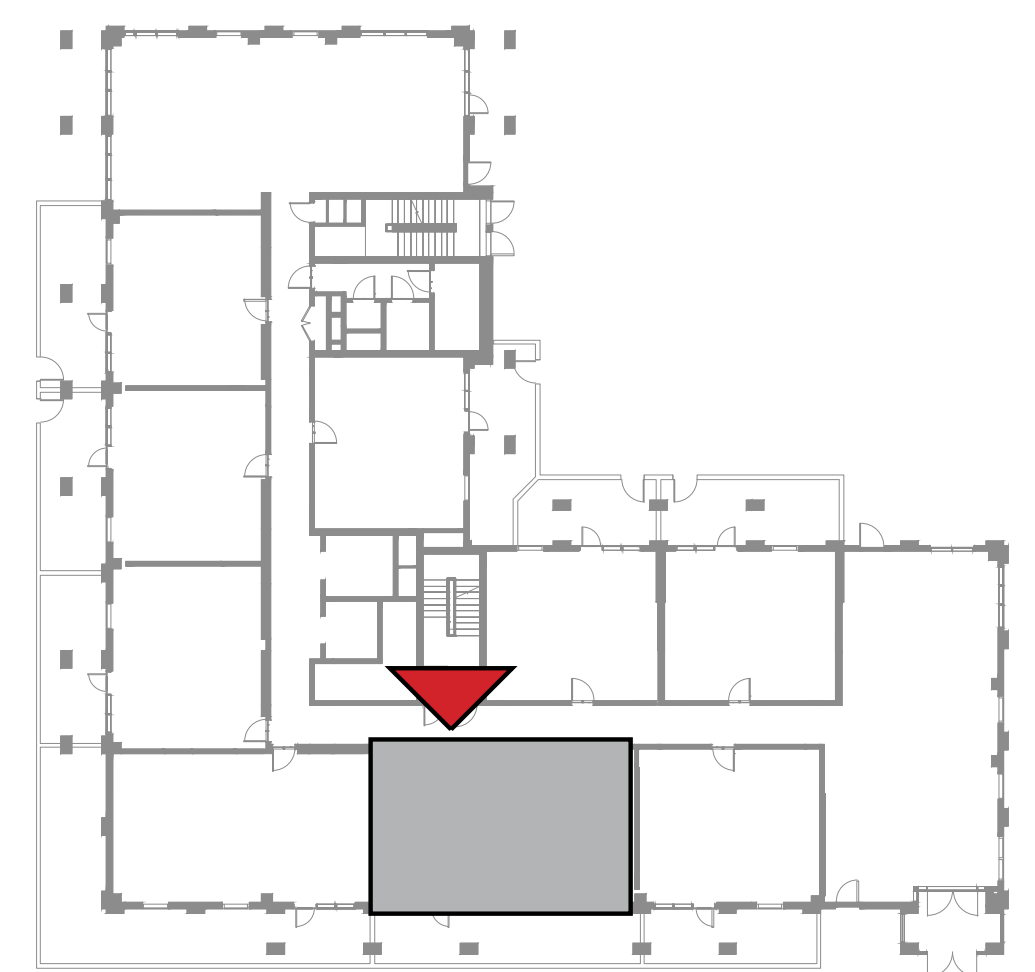
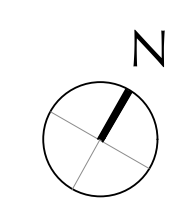
BUILDING 1

LEVEL 1

UNIT 105

2 BEDROOM

|                |              |                |
|----------------|--------------|----------------|
| APARTMENT AREA | 84.83 SQ.M.  | 913.10 SQ.FT.  |
| BALCONY AREA   | 33.29 SQ.M.  | 358.33 SQ.FT.  |
| TOTAL AREA     | 118.12 SQ.M. | 1271.43 SQ.FT. |



FLOOR PLAN 1. All dimensions are in imperial and metric, and measured from finish to finish excluding construction tolerances. 2. All materials, dimensions, and drawings are approximate only. 3. Information is subject to change without notice, at developer's absolute discretion. 4. Actual area may vary from the stated area. 5. Drawings not to scale. 6. All images used are for illustrative purposes only and do not represent the actual size, features, specifications, fittings, and furnishings. 7. The developer reserves the right to make revisions / alterations, at it's absolute discretion, without any liability whatsoever.

DUBAI CREEK  
HARBOUR

SURF AT  
CREEK BEACH

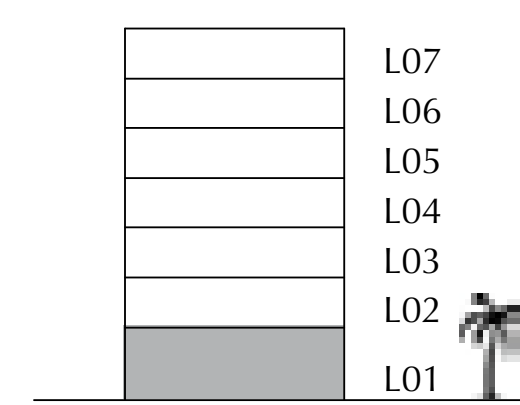
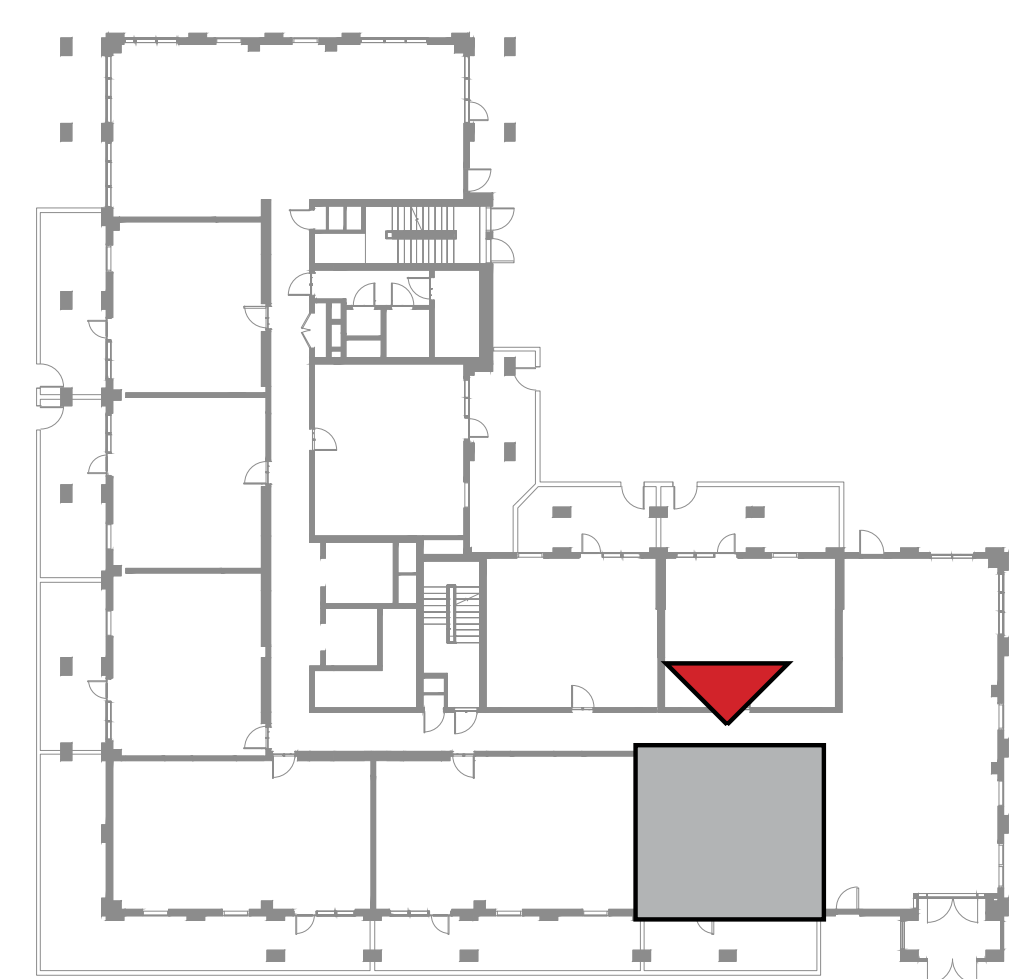
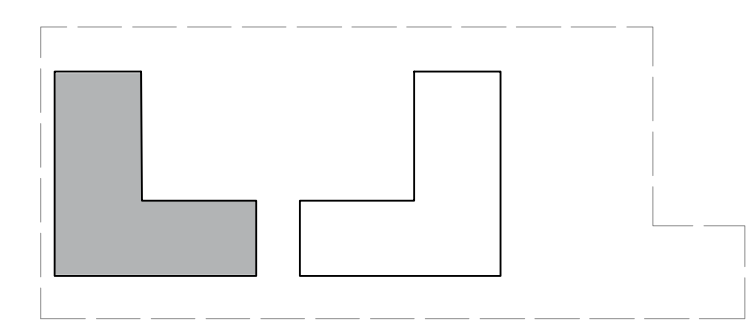
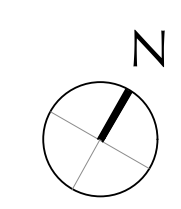
BUILDING 1

LEVEL 1

UNIT 106

1 BEDROOM

|                |             |               |
|----------------|-------------|---------------|
| APARTMENT AREA | 59.53 SQ.M. | 640.78 SQ.FT. |
| BALCONY AREA   | 21.69 SQ.M. | 233.47 SQ.FT. |
| TOTAL AREA     | 81.22 SQ.M. | 874.25 SQ.FT. |



FLOOR PLAN 1. All dimensions are in imperial and metric, and measured from finish to finish excluding construction tolerances. 2. All materials, dimensions, and drawings are approximate only. 3. Information is subject to change without notice, at developer's absolute discretion. 4. Actual area may vary from the stated area. 5. Drawings not to scale. 6. All images used are for illustrative purposes only and do not represent the actual size, features, specifications, fittings, and furnishings. 7. The developer reserves the right to make revisions / alterations, at it's absolute discretion, without any liability whatsoever.



DUBAI CREEK  
HARBOUR

SURF AT  
CREEK BEACH

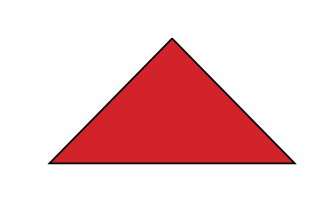
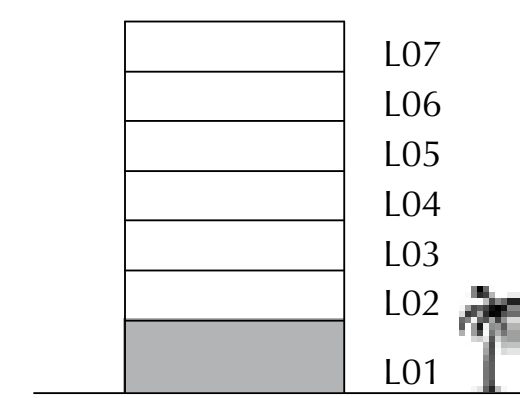
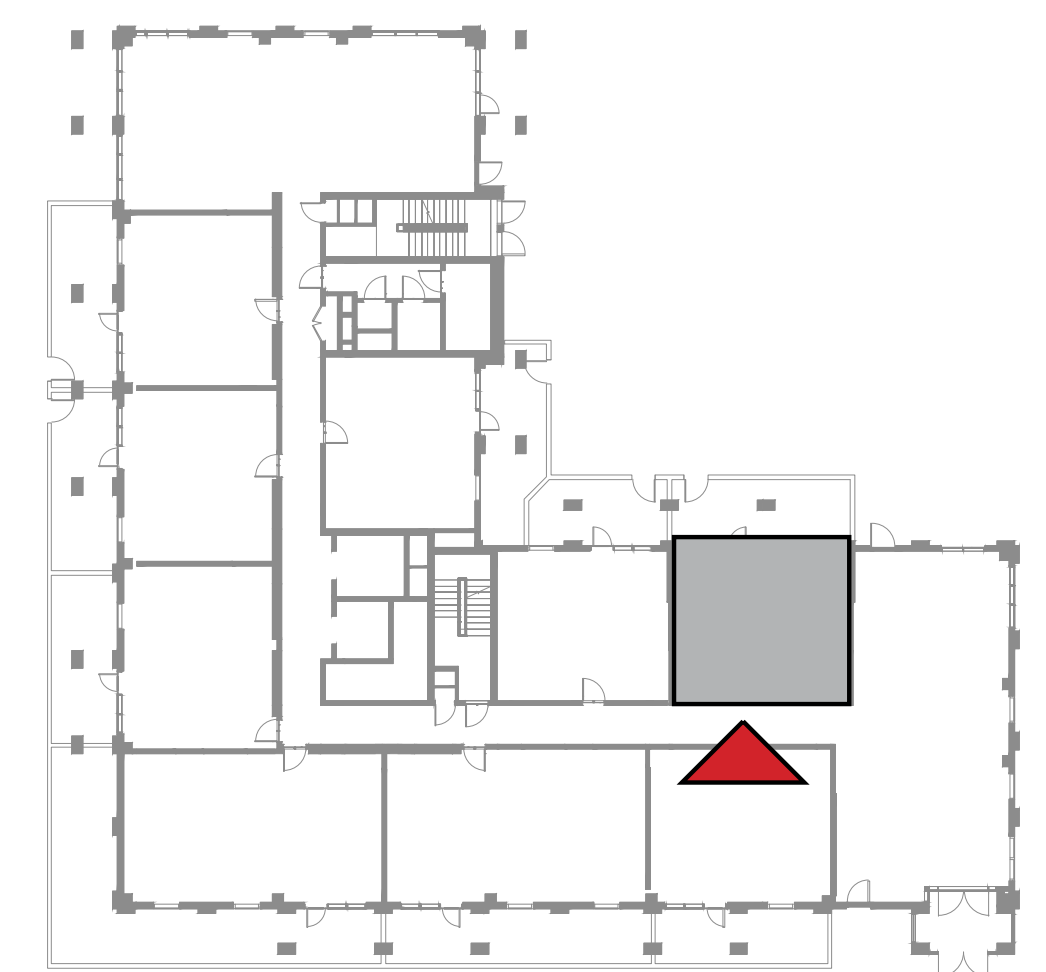
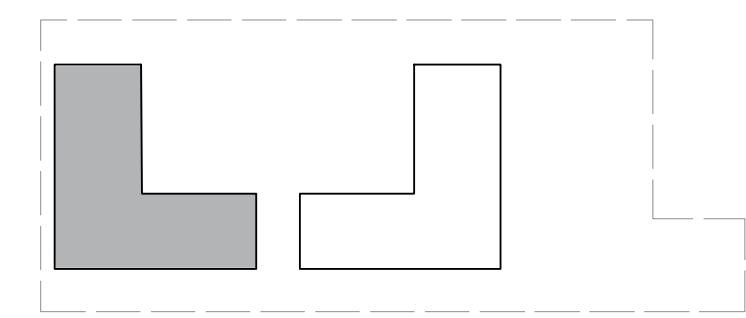
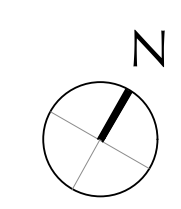
BUILDING 1

LEVEL 1

UNIT 107

1 BEDROOM

|                |             |               |
|----------------|-------------|---------------|
| APARTMENT AREA | 55.57 SQ.M. | 598.15 SQ.FT. |
| BALCONY AREA   | 26.63 SQ.M. | 286.64 SQ.FT. |
| TOTAL AREA     | 82.20 SQ.M. | 884.79 SQ.FT. |



FLOOR PLAN 1. All dimensions are in imperial and metric, and measured from finish to finish excluding construction tolerances. 2. All materials, dimensions, and drawings are approximate only. 3. Information is subject to change without notice, at developer's absolute discretion. 4. Actual area may vary from the stated area. 5. Drawings not to scale. 6. All images used are for illustrative purposes only and do not represent the actual size, features, specifications, fittings, and furnishings. 7. The developer reserves the right to make revisions / alterations, at it's absolute discretion, without any liability whatsoever.



DUBAI CREEK  
HARBOUR

SURF AT  
CREEK BEACH

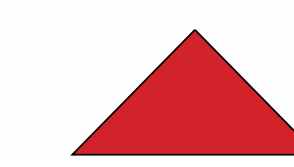
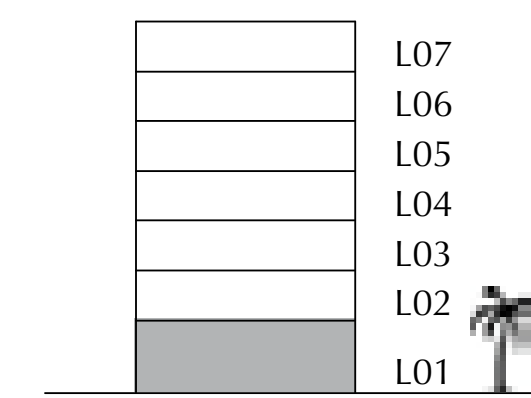
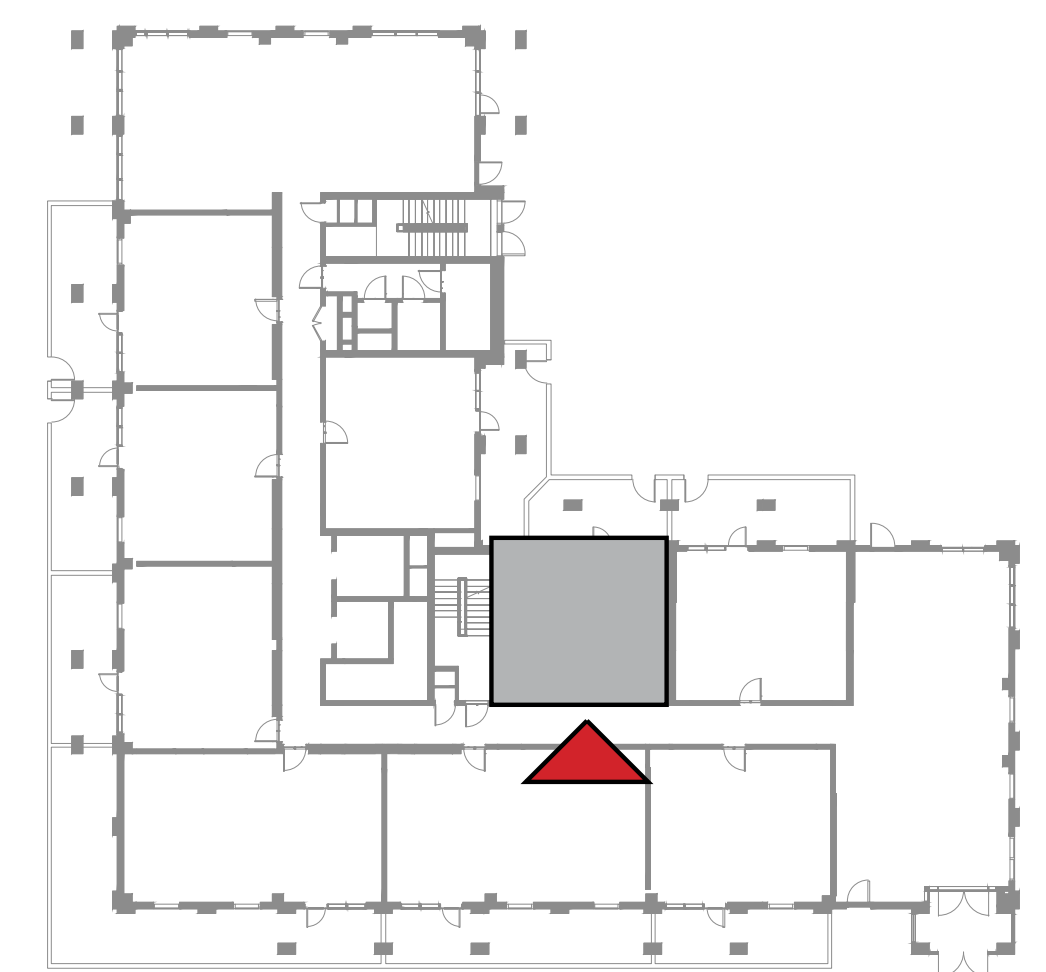
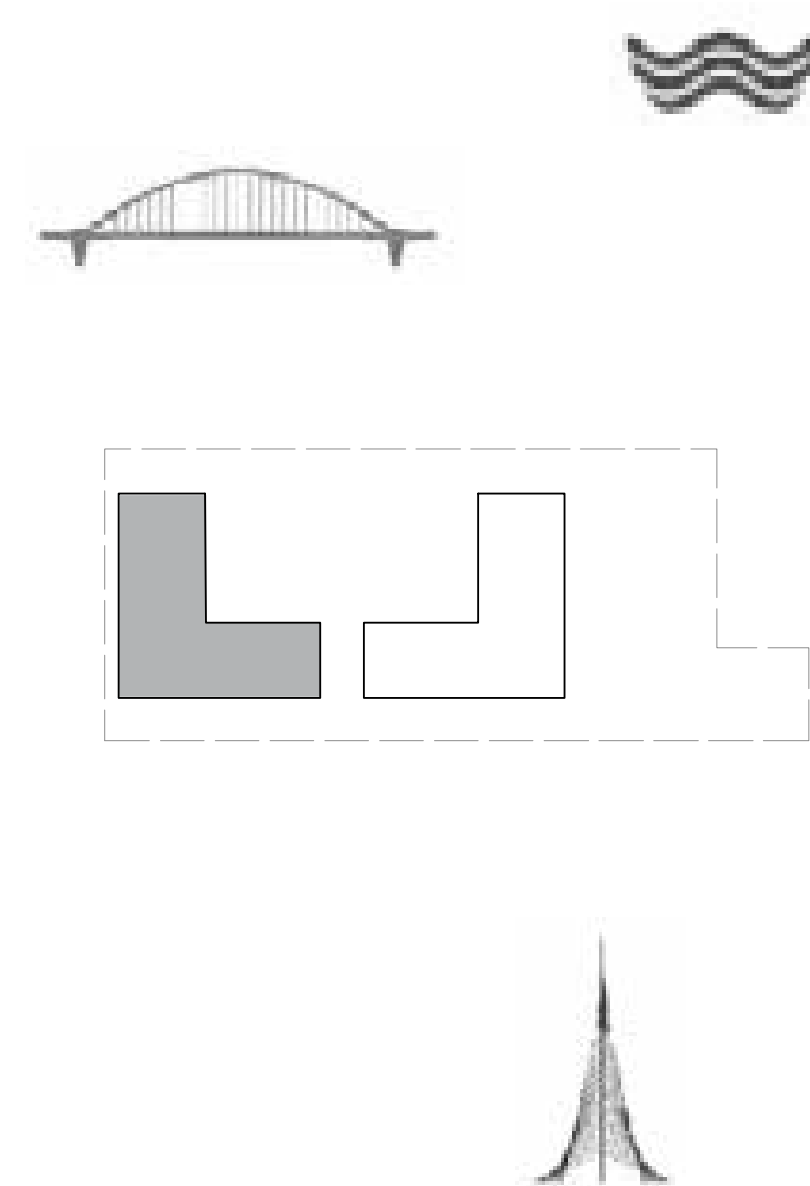
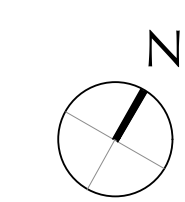
BUILDING 1

LEVEL 1

UNIT 108

1 BEDROOM

|                |             |               |
|----------------|-------------|---------------|
| APARTMENT AREA | 55.57 SQ.M. | 598.15 SQ.FT. |
| BALCONY AREA   | 20.26 SQ.M. | 218.08 SQ.FT. |
| TOTAL AREA     | 75.83 SQ.M. | 816.23 SQ.FT. |



FLOOR PLAN 1. All dimensions are in imperial and metric, and measured from finish to finish excluding construction tolerances. 2. All materials, dimensions, and drawings are approximate only. 3. Information is subject to change without notice, at developer's absolute discretion. 4. Actual area may vary from the stated area. 5. Drawings not to scale. 6. All images used are for illustrative purposes only and do not represent the actual size, features, specifications, fittings, and furnishings. 7. The developer reserves the right to make revisions / alterations, at it's absolute discretion, without any liability whatsoever.

DUBAI CREEK  
HARBOUR

SURF AT  
CREEK BEACH

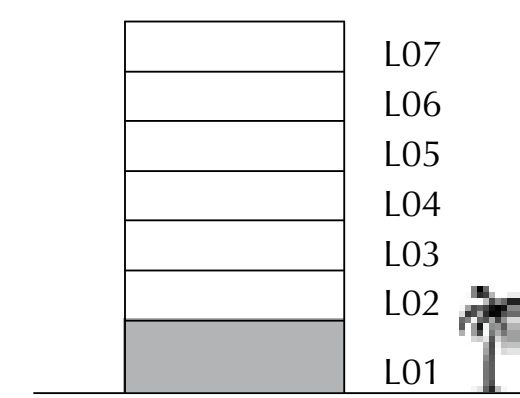
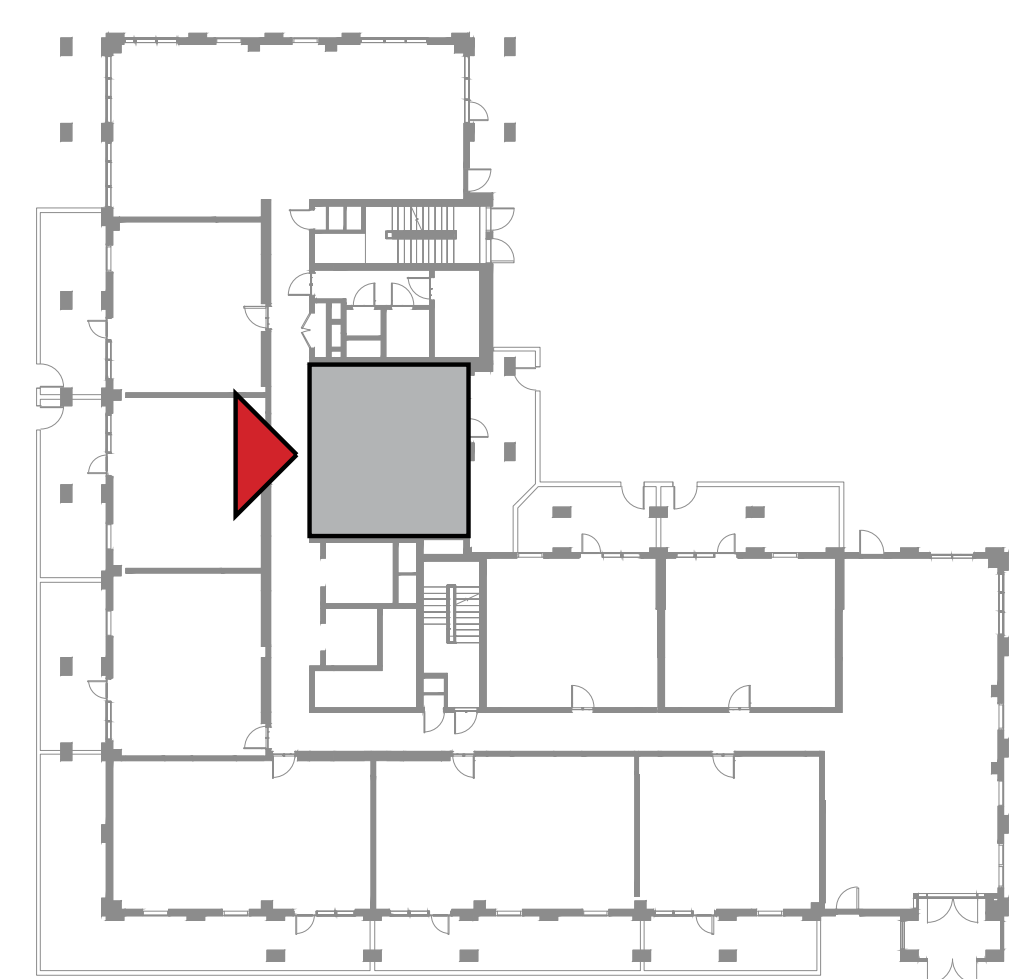
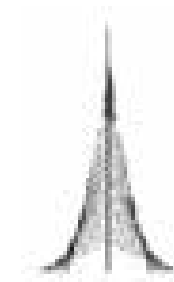
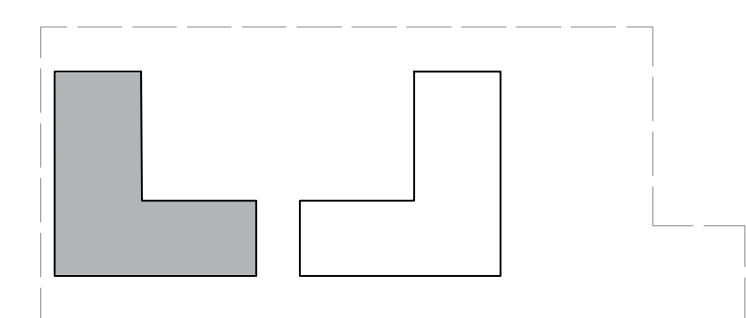
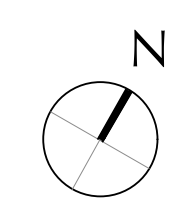
BUILDING 1

LEVEL 1

UNIT 109

1 BEDROOM

|                |             |               |
|----------------|-------------|---------------|
| APARTMENT AREA | 55.30 SQ.M. | 595.24 SQ.FT. |
| BALCONY AREA   | 25.92 SQ.M. | 279.00 SQ.FT. |
| TOTAL AREA     | 81.22 SQ.M. | 874.24 SQ.FT. |



FLOOR PLAN 1. All dimensions are in imperial and metric, and measured from finish to finish excluding construction tolerances. 2. All materials, dimensions, and drawings are approximate only. 3. Information is subject to change without notice, at developer's absolute discretion. 4. Actual area may vary from the stated area. 5. Drawings not to scale. 6. All images used are for illustrative purposes only and do not represent the actual size, features, specifications, fittings, and furnishings. 7. The developer reserves the right to make revisions / alterations, at it's absolute discretion, without any liability whatsoever.



DUBAI CREEK  
HARBOUR

SURF AT  
CREEK BEACH

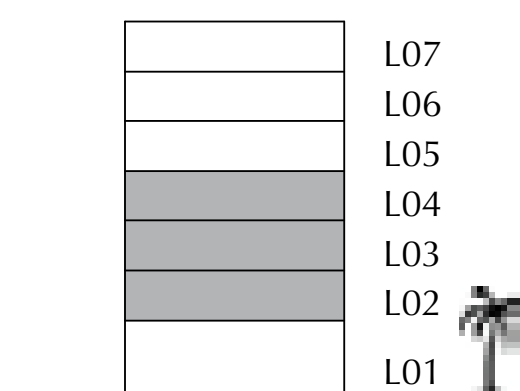
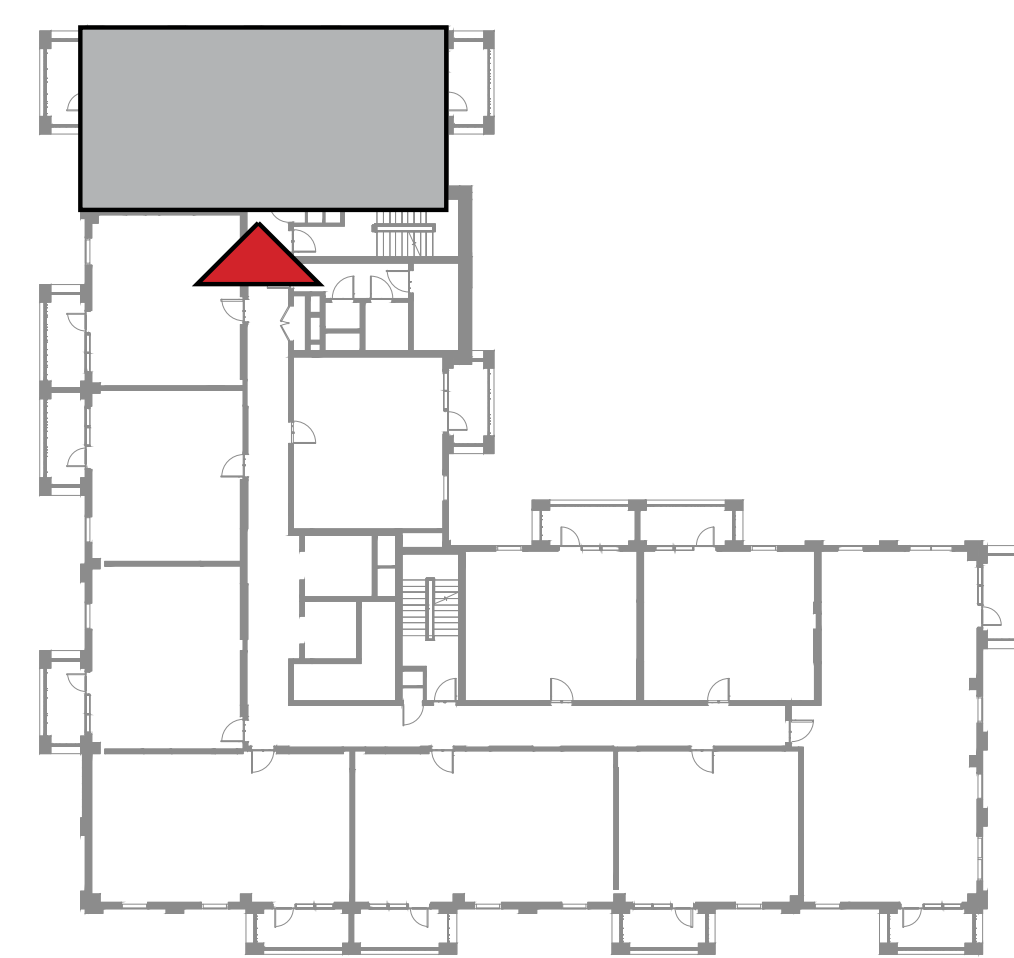
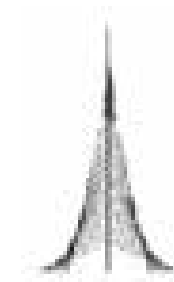
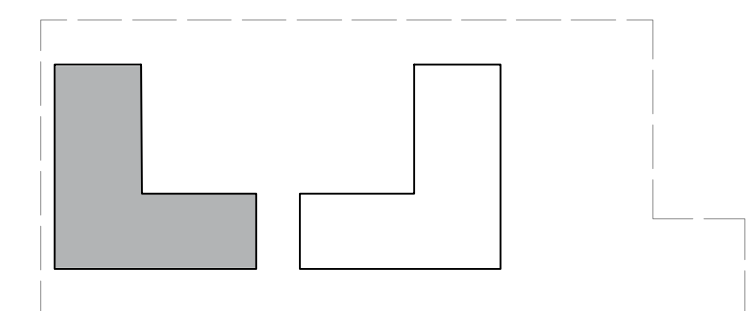
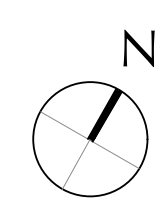
BUILDING 1

LEVEL 2, 3, 4

UNIT 201, 301, 401

3 BEDROOM

|                |              |                |
|----------------|--------------|----------------|
| APARTMENT AREA | 123.82 SQ.M. | 1332.79 SQ.FT. |
| BALCONY AREA   | 14.79 SQ.M.  | 159.20 SQ.FT.  |
| TOTAL AREA     | 138.61 SQ.M. | 1491.99 SQ.FT. |



FLOOR PLAN 1. All dimensions are in imperial and metric, and measured from finish to finish excluding construction tolerances. 2. All materials, dimensions, and drawings are approximate only. 3. Information is subject to change without notice, at developer's absolute discretion. 4. Actual area may vary from the stated area. 5. Drawings not to scale. 6. All images used are for illustrative purposes only and do not represent the actual size, features, specifications, fittings, and furnishings. 7. The developer reserves the right to make revisions / alterations, at it's absolute discretion, without any liability whatsoever.



BUILDING 2

EMAAR

DUBAI CREEK  
HARBOUR

SURF AT  
CREEK BEACH

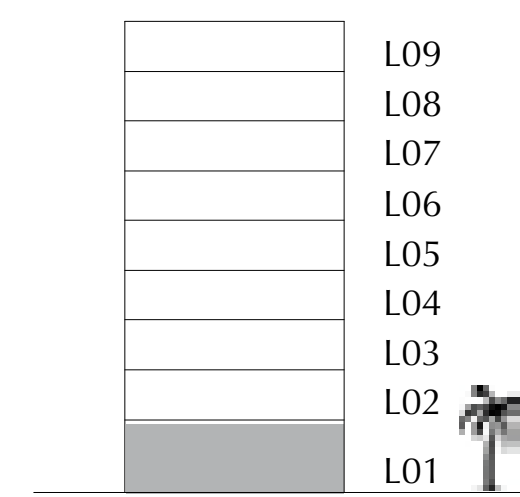
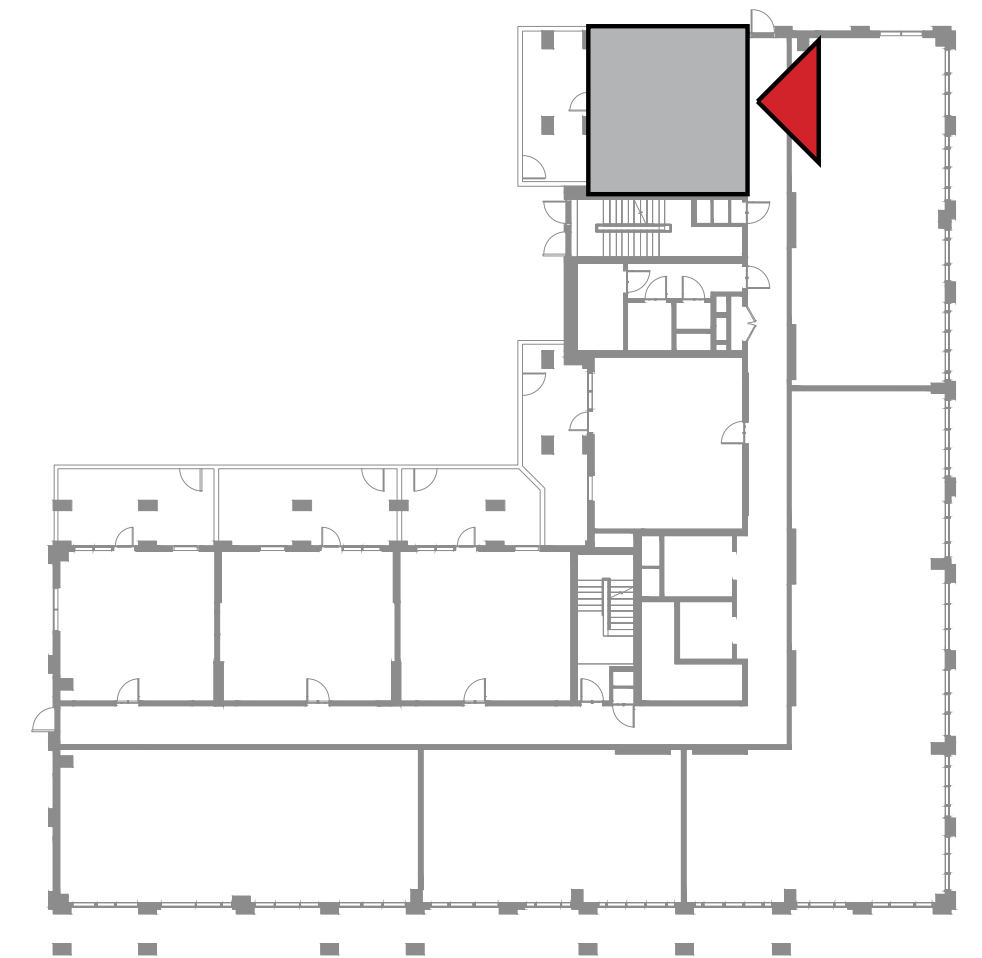
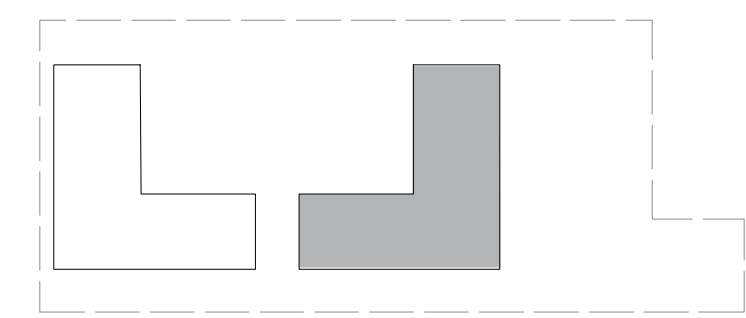
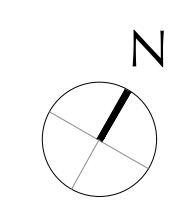
BUILDING 2

LEVEL 1

UNIT 101

1 BEDROOM

|                |             |               |
|----------------|-------------|---------------|
| APARTMENT AREA | 50.35 SQ.M. | 541.96 SQ.FT. |
| BALCONY AREA   | 22.86 SQ.M. | 246.06 SQ.FT. |
| TOTAL AREA     | 73.21 SQ.M. | 788.02 SQ.FT. |



FLOOR PLAN 1. All dimensions are in imperial and metric, and measured from finish to finish excluding construction tolerances. 2. All materials, dimensions, and drawings are approximate only. 3. Information is subject to change without notice, at developer's absolute discretion. 4. Actual area may vary from the stated area. 5. Drawings not to scale. 6. All images used are for illustrative purposes only and do not represent the actual size, features, specifications, fittings, and furnishings. 7. The developer reserves the right to make revisions / alterations, at it's absolute discretion, without any liability whatsoever.

DUBAI CREEK  
HARBOUR

SURF AT  
CREEK BEACH

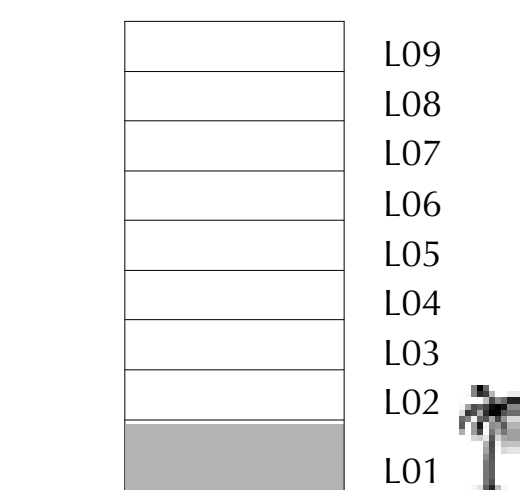
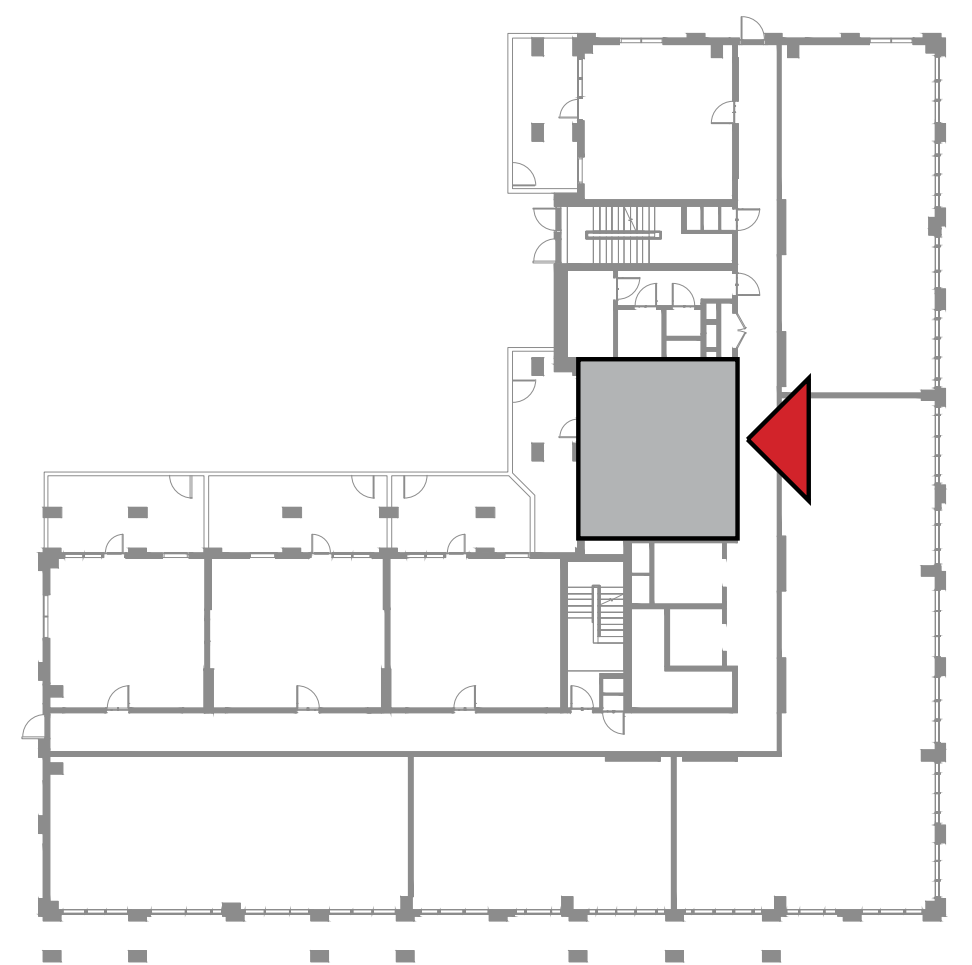
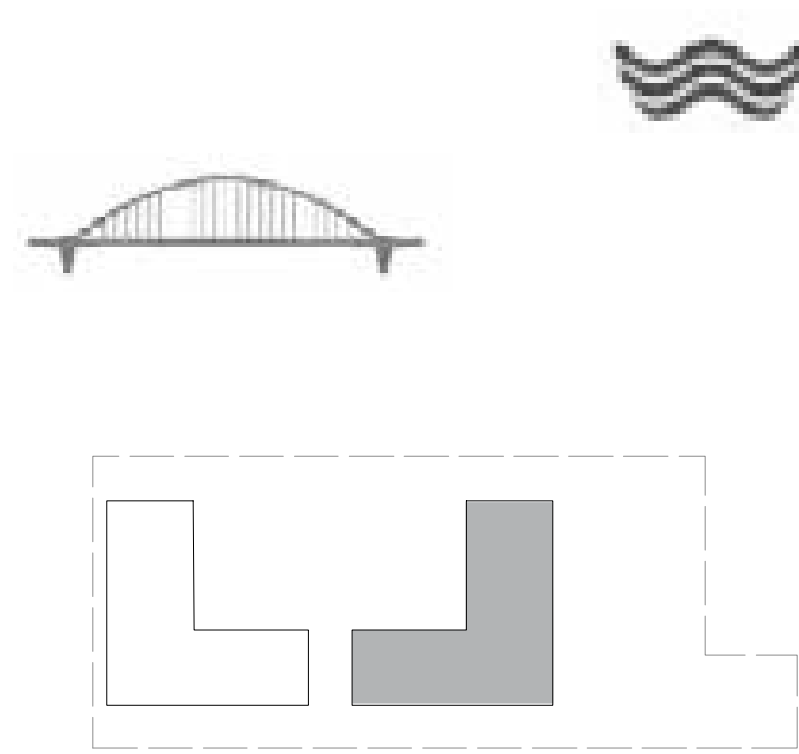
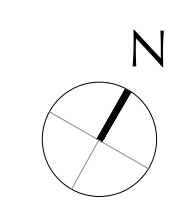
BUILDING 2

LEVEL 1

UNIT 102

1 BEDROOM

|                |             |               |
|----------------|-------------|---------------|
| APARTMENT AREA | 55.46 SQ.M. | 596.97 SQ.FT. |
| BALCONY AREA   | 25.86 SQ.M. | 278.35 SQ.FT. |
| TOTAL AREA     | 81.32 SQ.M. | 875.32 SQ.FT. |



FLOOR PLAN 1. All dimensions are in imperial and metric, and measured from finish to finish excluding construction tolerances. 2. All materials, dimensions, and drawings are approximate only. 3. Information is subject to change without notice, at developer's absolute discretion. 4. Actual area may vary from the stated area. 5. Drawings not to scale. 6. All images used are for illustrative purposes only and do not represent the actual size, features, specifications, fittings, and furnishings. 7. The developer reserves the right to make revisions / alterations, at it's absolute discretion, without any liability whatsoever.



DUBAI CREEK  
HARBOUR

SURF AT  
CREEK BEACH

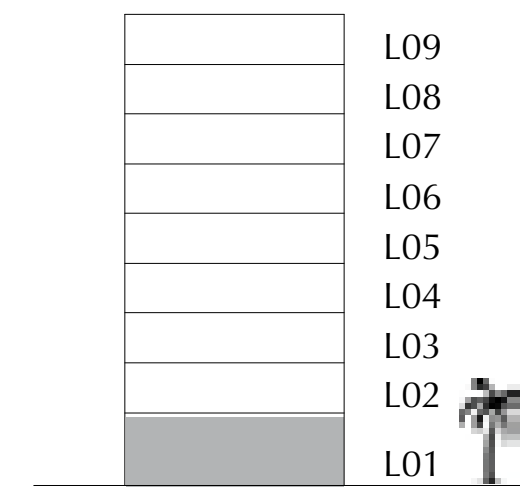
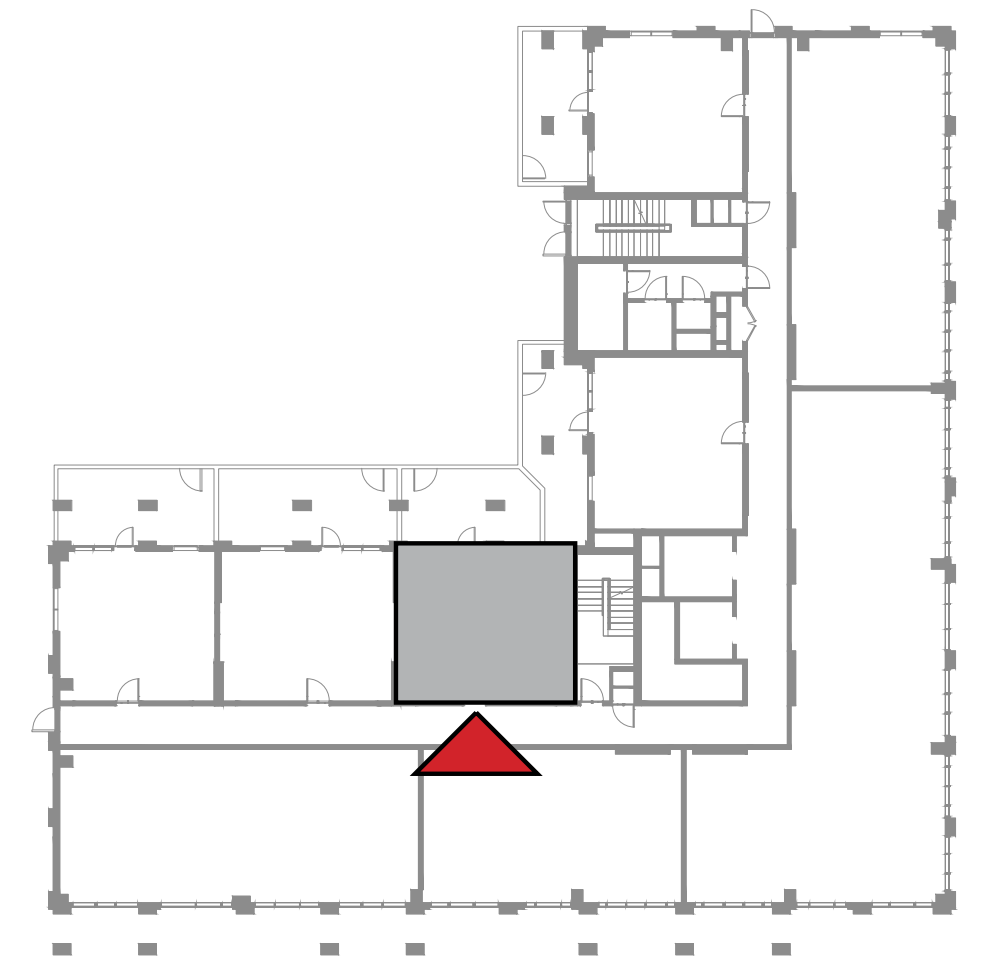
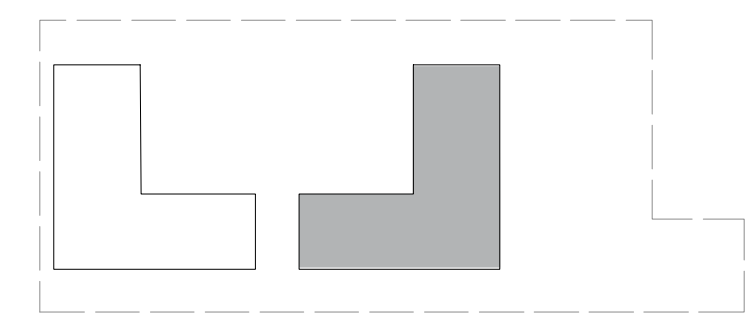
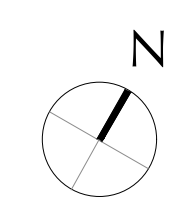
BUILDING 2

LEVEL 1

UNIT 103

1 BEDROOM

|                |             |               |
|----------------|-------------|---------------|
| APARTMENT AREA | 55.57 SQ.M. | 598.15 SQ.FT. |
| BALCONY AREA   | 20.27 SQ.M. | 218.18 SQ.FT. |
| TOTAL AREA     | 75.84 SQ.M. | 816.33 SQ.FT. |



FLOOR PLAN 1. All dimensions are in imperial and metric, and measured from finish to finish excluding construction tolerances. 2. All materials, dimensions, and drawings are approximate only. 3. Information is subject to change without notice, at developer's absolute discretion. 4. Actual area may vary from the stated area. 5. Drawings not to scale. 6. All images used are for illustrative purposes only and do not represent the actual size, features, specifications, fittings, and furnishings. 7. The developer reserves the right to make revisions / alterations, at it's absolute discretion, without any liability whatsoever.

**DUBAI CREEK**  
HARBOUR

**SURF AT**  
**CREEK BEACH**

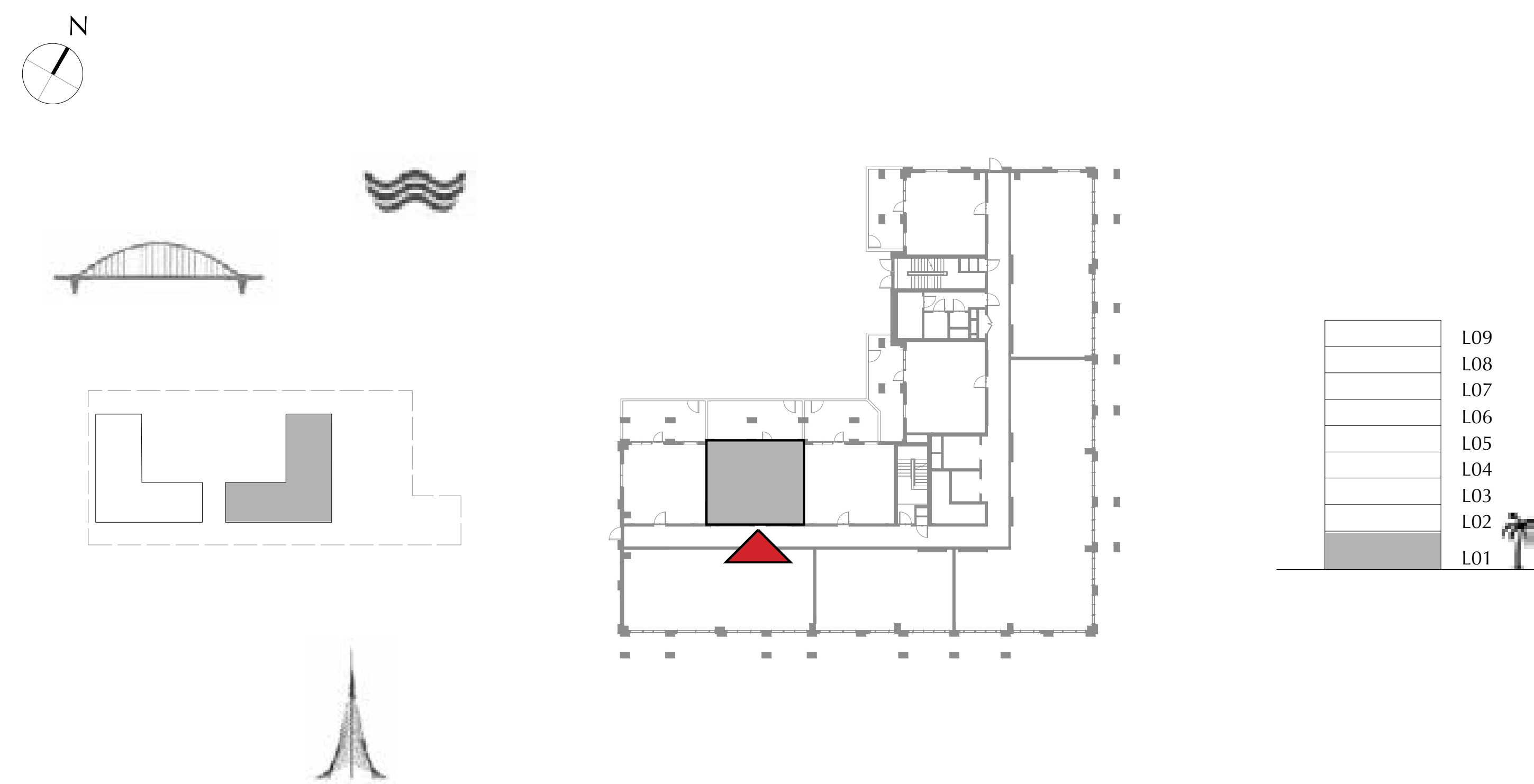
BUILDING 2

LEVEL 1

UNIT 104

**1 BEDROOM**

|                |             |               |
|----------------|-------------|---------------|
| APARTMENT AREA | 55.57 SQ.M. | 598.15 SQ.FT. |
| BALCONY AREA   | 26.64 SQ.M. | 286.75 SQ.FT. |
| TOTAL AREA     | 82.21 SQ.M. | 884.90 SQ.FT. |



FLOOR PLAN 1. All dimensions are in imperial and metric, and measured from finish to finish excluding construction tolerances. 2. All materials, dimensions, and drawings are approximate only. 3. Information is subject to change without notice, at developer's absolute discretion. 4. Actual area may vary from the stated area. 5. Drawings not to scale. 6. All images used are for illustrative purposes only and do not represent the actual size, features, specifications, fittings, and furnishings. 7. The developer reserves the right to make revisions / alterations, at it's absolute discretion, without any liability whatsoever.



**DUBAI CREEK**  
HARBOUR

**SURF AT**  
**CREEK BEACH**

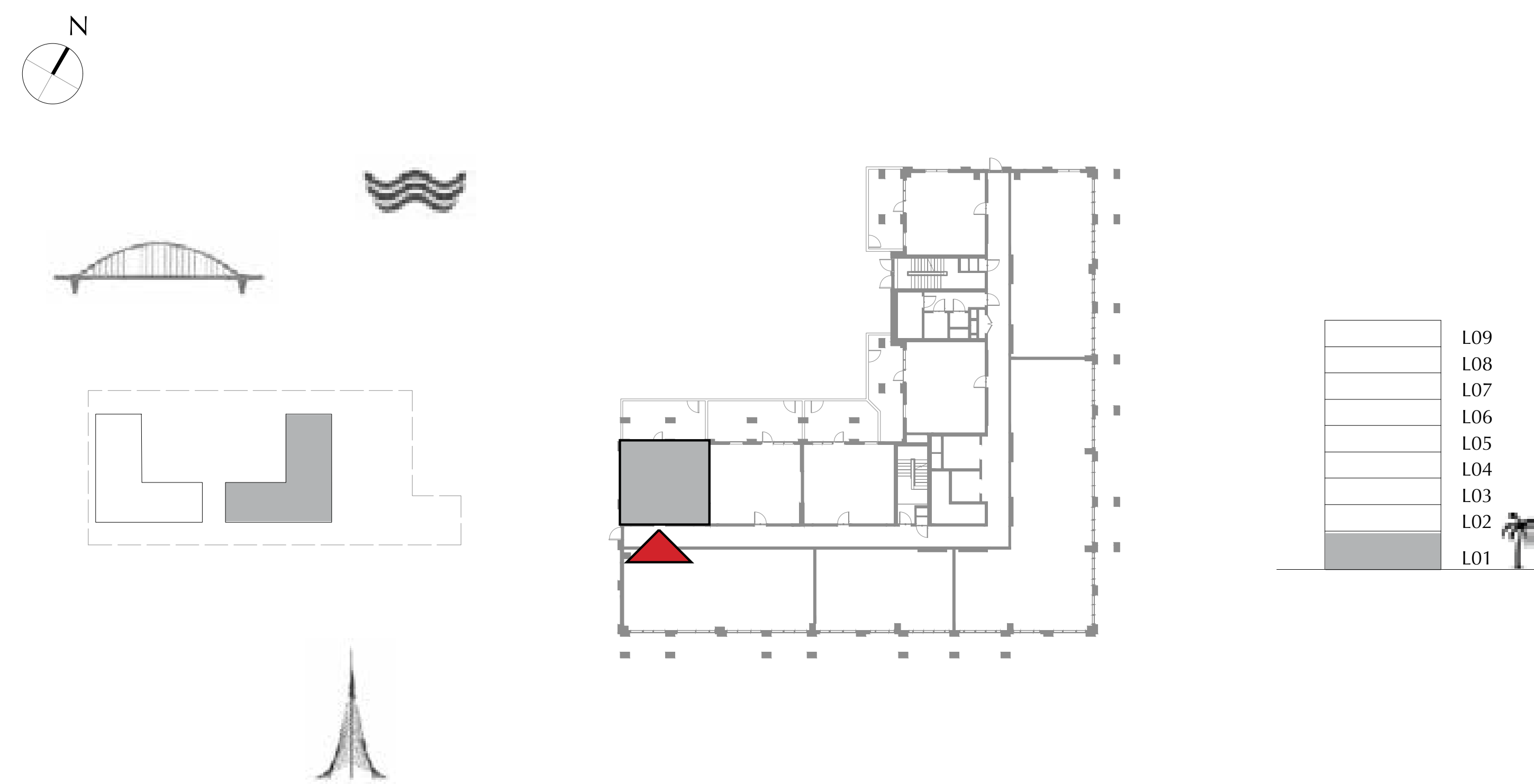
BUILDING 2

LEVEL 1

UNIT 105

**1 BEDROOM**

|                |             |               |
|----------------|-------------|---------------|
| APARTMENT AREA | 50.35 SQ.M. | 541.96 SQ.FT. |
| BALCONY AREA   | 23.28 SQ.M. | 250.58 SQ.FT. |
| TOTAL AREA     | 73.63 SQ.M. | 792.54 SQ.FT. |



FLOOR PLAN 1. All dimensions are in imperial and metric, and measured from finish to finish excluding construction tolerances. 2. All materials, dimensions, and drawings are approximate only. 3. Information is subject to change without notice, at developer's absolute discretion. 4. Actual area may vary from the stated area. 5. Drawings not to scale. 6. All images used are for illustrative purposes only and do not represent the actual size, features, specifications, fittings, and furnishings. 7. The developer reserves the right to make revisions / alterations, at it's absolute discretion, without any liability whatsoever.



DUBAI CREEK  
HARBOUR

SURF AT  
CREEK BEACH

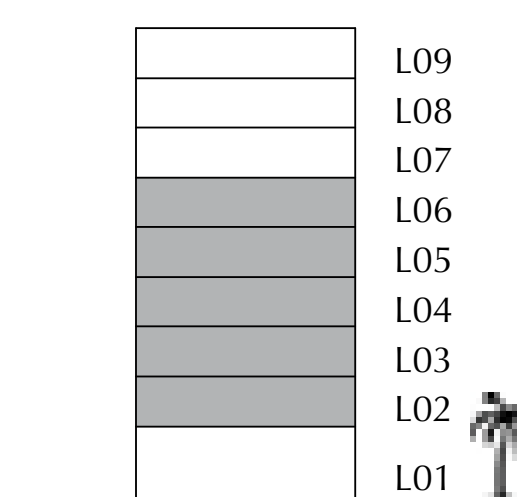
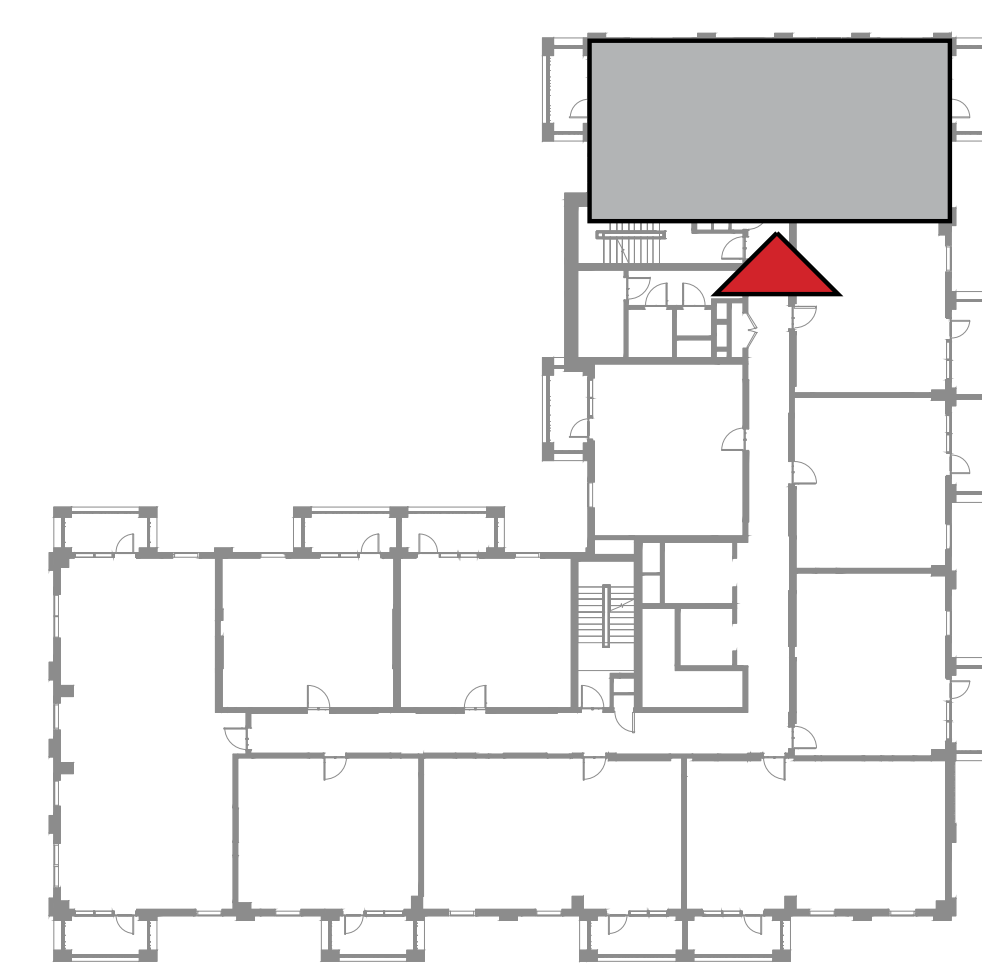
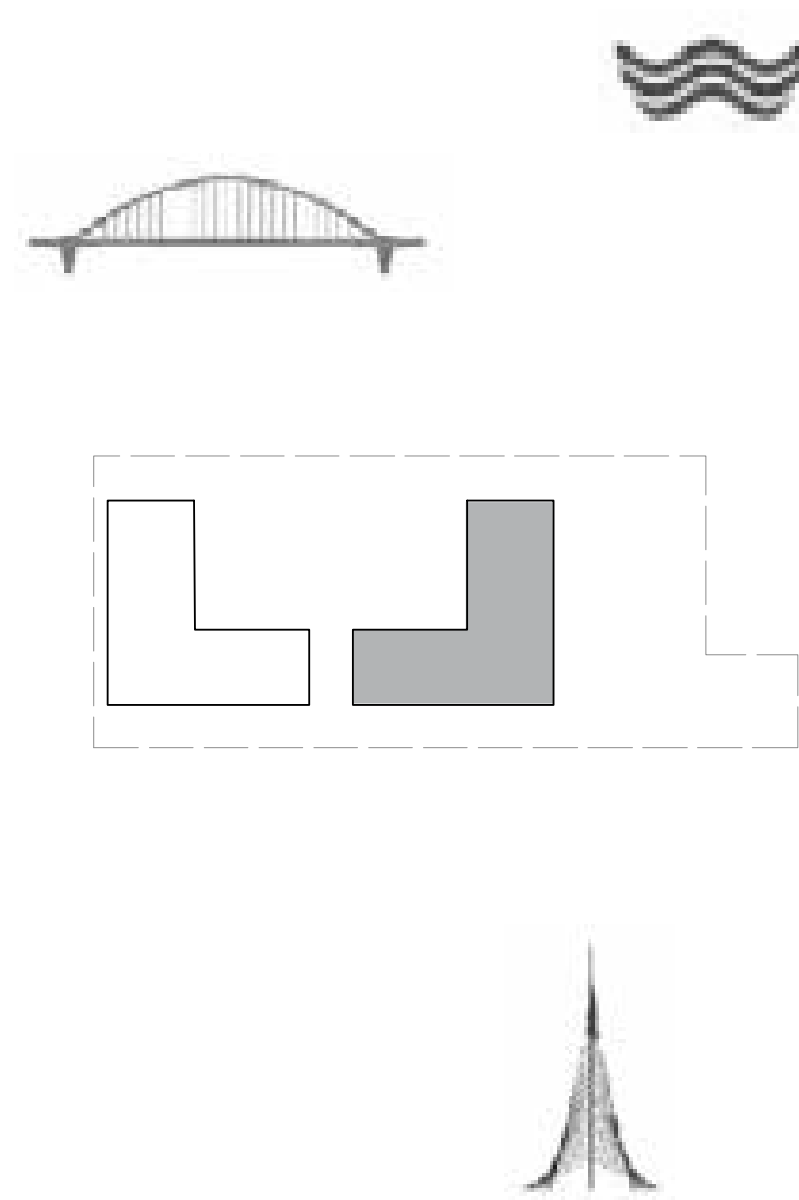
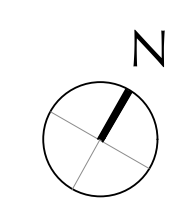
BUILDING 2

LEVEL 2, 3, 4, 5, 6

UNIT 201, 301, 401, 501, 601

3 BEDROOM

|                |              |                |
|----------------|--------------|----------------|
| APARTMENT AREA | 123.82 SQ.M. | 1332.79 SQ.FT. |
| BALCONY AREA   | 14.79 SQ.M.  | 159.20 SQ.FT.  |
| TOTAL AREA     | 138.61 SQ.M. | 1491.99 SQ.FT. |



FLOOR PLAN 1. All dimensions are in imperial and metric, and measured from finish to finish excluding construction tolerances. 2. All materials, dimensions, and drawings are approximate only. 3. Information is subject to change without notice, at developer's absolute discretion. 4. Actual area may vary from the stated area. 5. Drawings not to scale. 6. All images used are for illustrative purposes only and do not represent the actual size, features, specifications, fittings, and furnishings. 7. The developer reserves the right to make revisions / alterations, at it's absolute discretion, without any liability whatsoever.

DUBAI CREEK  
HARBOUR

SURF AT  
CREEK BEACH

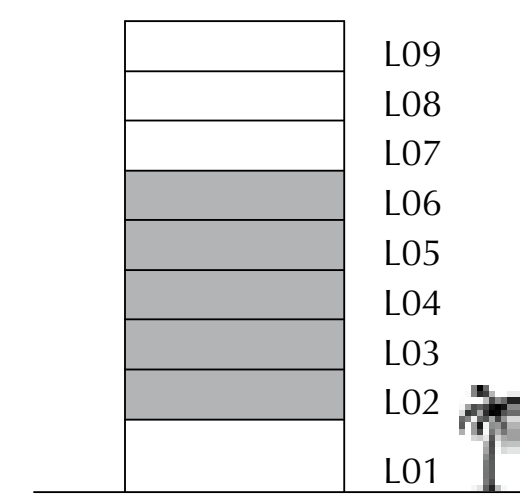
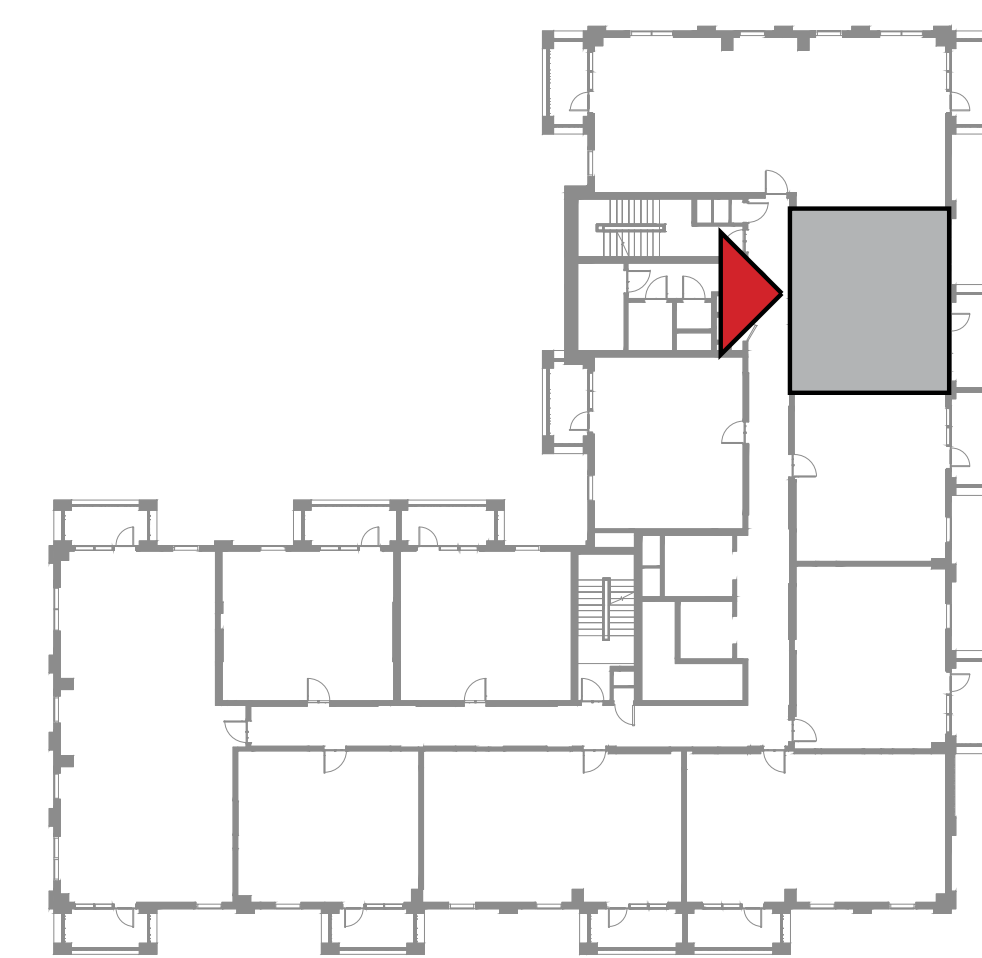
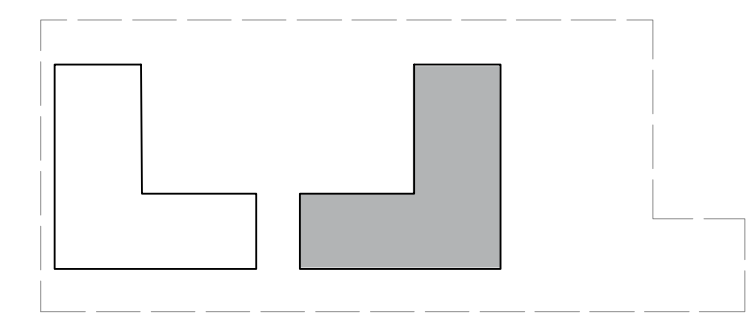
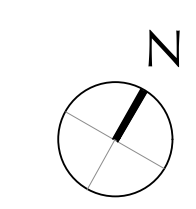
BUILDING 2

LEVEL 2, 3, 4, 5, 6

UNIT 202, 302, 402, 502, 602

1 BEDROOM

|                |             |               |
|----------------|-------------|---------------|
| APARTMENT AREA | 55.32 SQ.M. | 595.46 SQ.FT. |
| BALCONY AREA   | 8.40 SQ.M.  | 90.42 SQ.FT.  |
| TOTAL AREA     | 63.72 SQ.M. | 685.88 SQ.FT. |



FLOOR PLAN 1. All dimensions are in imperial and metric, and measured from finish to finish excluding construction tolerances. 2. All materials, dimensions, and drawings are approximate only. 3. Information is subject to change without notice, at developer's absolute discretion. 4. Actual area may vary from the stated area. 5. Drawings not to scale. 6. All images used are for illustrative purposes only and do not represent the actual size, features, specifications, fittings, and furnishings. 7. The developer reserves the right to make revisions / alterations, at it's absolute discretion, without any liability whatsoever.



DUBAI CREEK  
HARBOUR

SURF AT  
CREEK BEACH

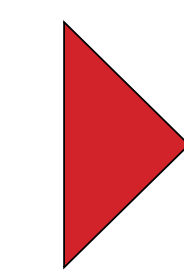
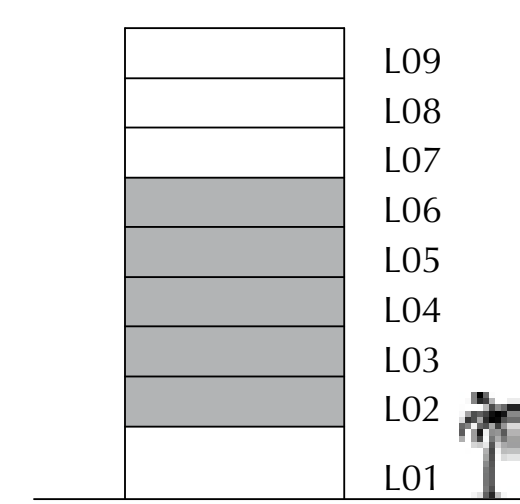
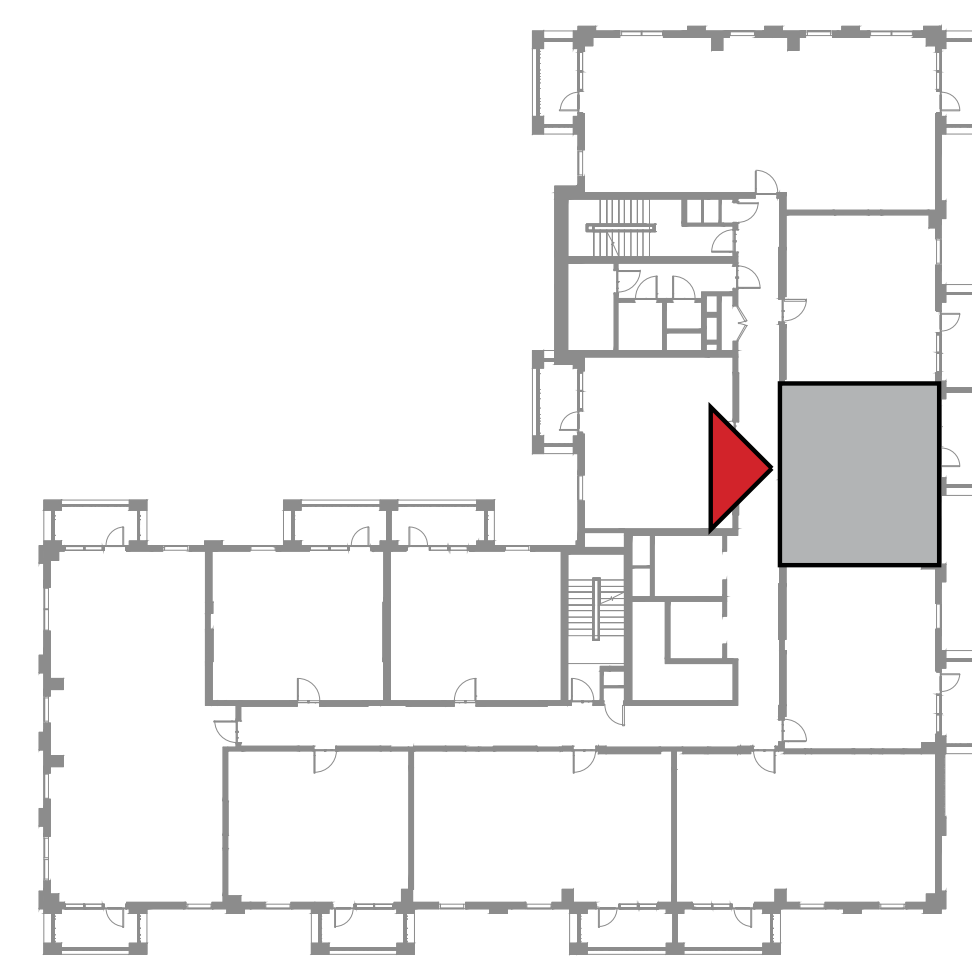
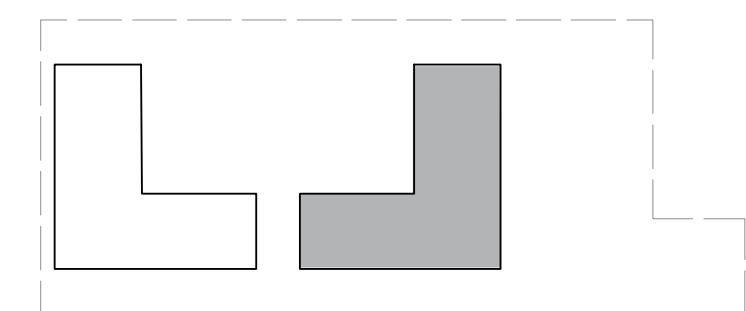
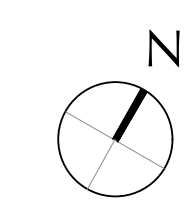
BUILDING 2

LEVEL 2, 3, 4, 5, 6

UNIT 203, 303, 403, 503, 603

1 BEDROOM

|                |             |               |
|----------------|-------------|---------------|
| APARTMENT AREA | 55.48 SQ.M. | 597.18 SQ.FT. |
| BALCONY AREA   | 8.40 SQ.M.  | 90.42 SQ.FT.  |
| TOTAL AREA     | 63.88 SQ.M. | 687.60 SQ.FT. |



FLOOR PLAN 1. All dimensions are in imperial and metric, and measured from finish to finish excluding construction tolerances. 2. All materials, dimensions, and drawings are approximate only. 3. Information is subject to change without notice, at developer's absolute discretion. 4. Actual area may vary from the stated area. 5. Drawings not to scale. 6. All images used are for illustrative purposes only and do not represent the actual size, features, specifications, fittings, and furnishings. 7. The developer reserves the right to make revisions / alterations, at it's absolute discretion, without any liability whatsoever.



DUBAI CREEK  
HARBOUR

SURF AT  
CREEK BEACH

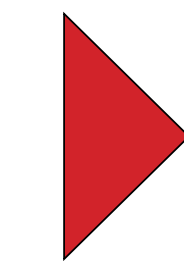
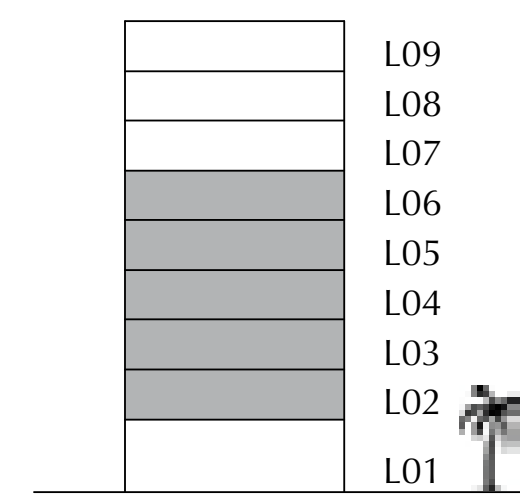
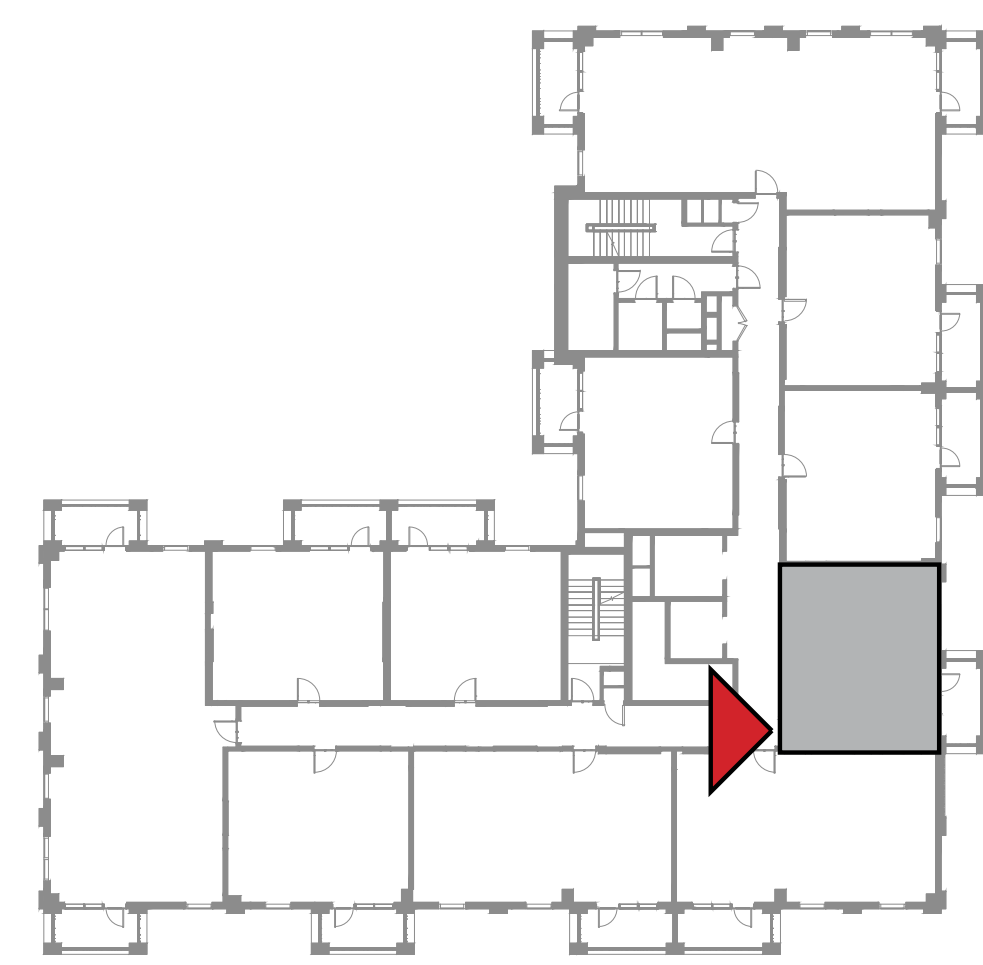
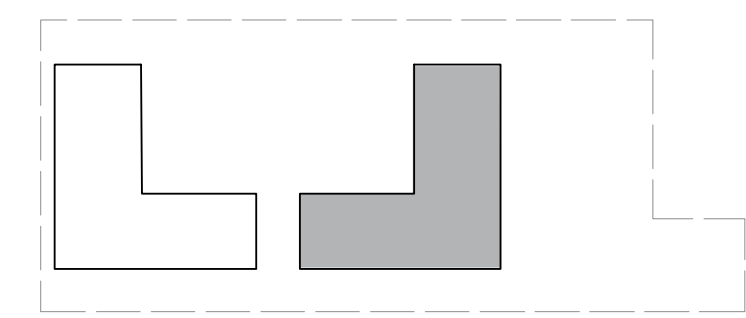
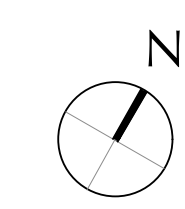
BUILDING 2

LEVEL 2, 3, 4, 5, 6

UNIT 204, 304, 404, 504, 604

1 BEDROOM

|                |             |               |
|----------------|-------------|---------------|
| APARTMENT AREA | 59.35 SQ.M. | 638.84 SQ.FT. |
| BALCONY AREA   | 7.40 SQ.M.  | 79.65 SQ.FT.  |
| TOTAL AREA     | 66.75 SQ.M. | 718.49 SQ.FT. |



FLOOR PLAN 1. All dimensions are in imperial and metric, and measured from finish to finish excluding construction tolerances. 2. All materials, dimensions, and drawings are approximate only. 3. Information is subject to change without notice, at developer's absolute discretion. 4. Actual area may vary from the stated area. 5. Drawings not to scale. 6. All images used are for illustrative purposes only and do not represent the actual size, features, specifications, fittings, and furnishings. 7. The developer reserves the right to make revisions / alterations, at it's absolute discretion, without any liability whatsoever.

DUBAI CREEK  
HARBOUR

SURF AT  
CREEK BEACH

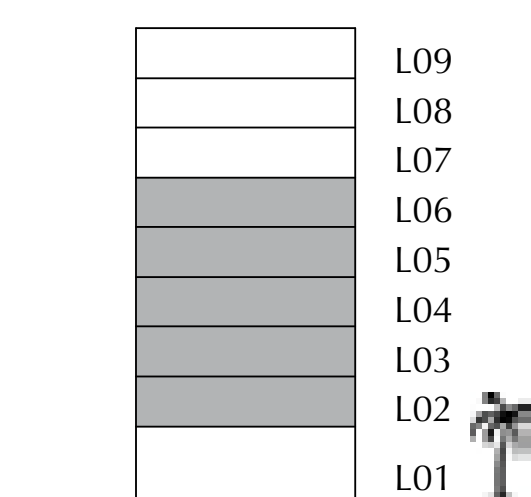
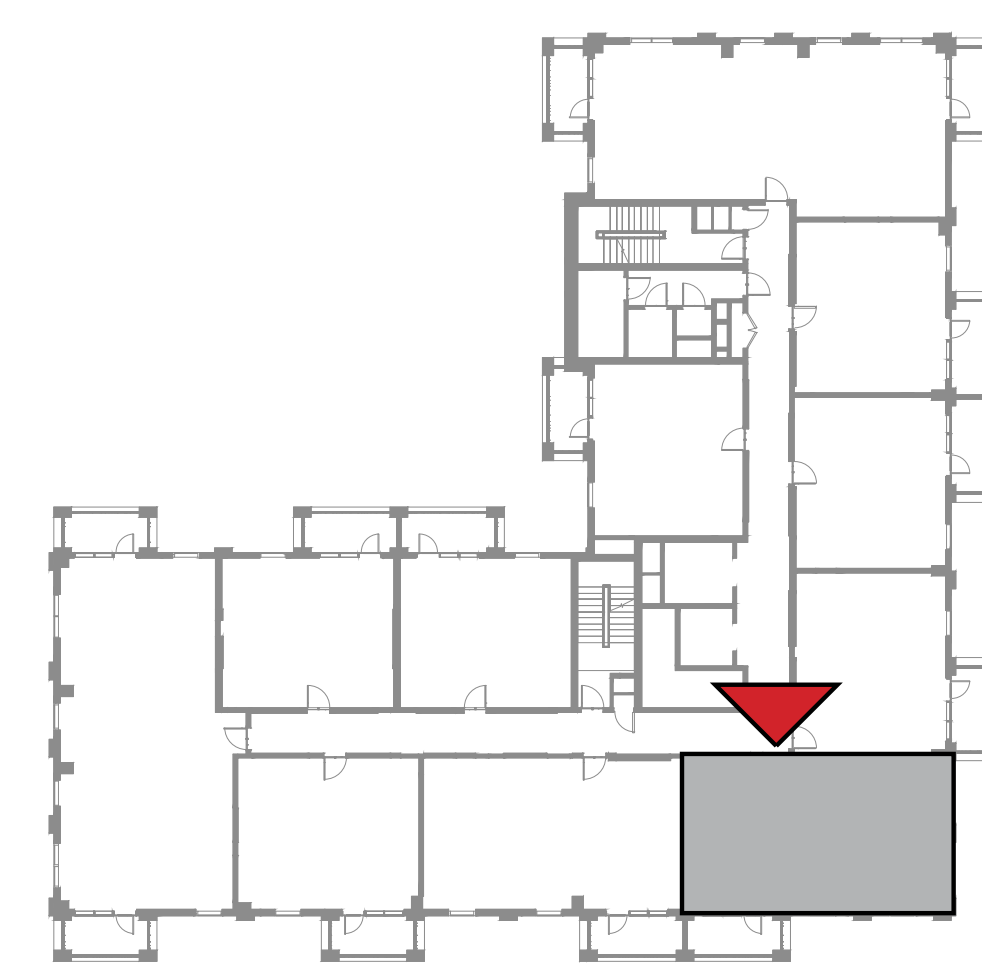
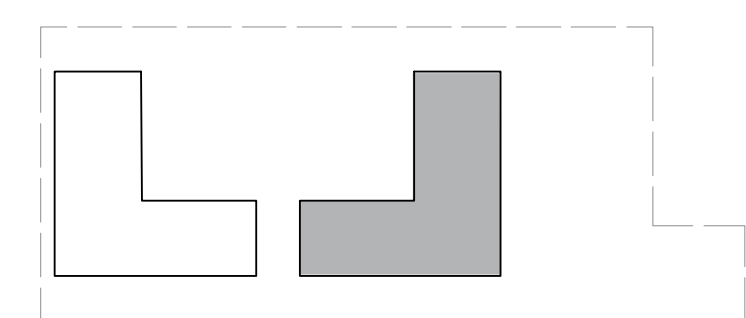
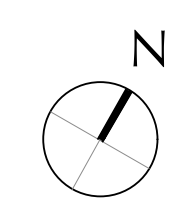
BUILDING 2

LEVEL 2, 3, 4, 5, 6

UNIT 205, 305, 405, 505, 605

2 BEDROOM

|                |             |               |
|----------------|-------------|---------------|
| APARTMENT AREA | 83.31 SQ.M. | 896.74 SQ.FT. |
| BALCONY AREA   | 8.40 SQ.M.  | 90.42 SQ.FT.  |
| TOTAL AREA     | 91.71 SQ.M. | 987.16 SQ.FT. |



FLOOR PLAN 1. All dimensions are in imperial and metric, and measured from finish to finish excluding construction tolerances. 2. All materials, dimensions, and drawings are approximate only. 3. Information is subject to change without notice, at developer's absolute discretion. 4. Actual area may vary from the stated area. 5. Drawings not to scale. 6. All images used are for illustrative purposes only and do not represent the actual size, features, specifications, fittings, and furnishings. 7. The developer reserves the right to make revisions / alterations, at it's absolute discretion, without any liability whatsoever.



DUBAI CREEK  
HARBOUR

SURF AT  
CREEK BEACH

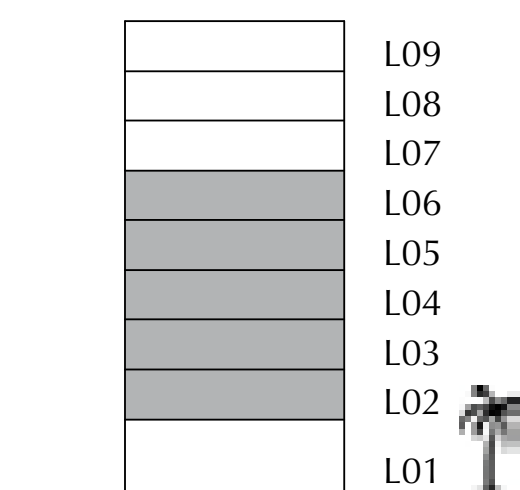
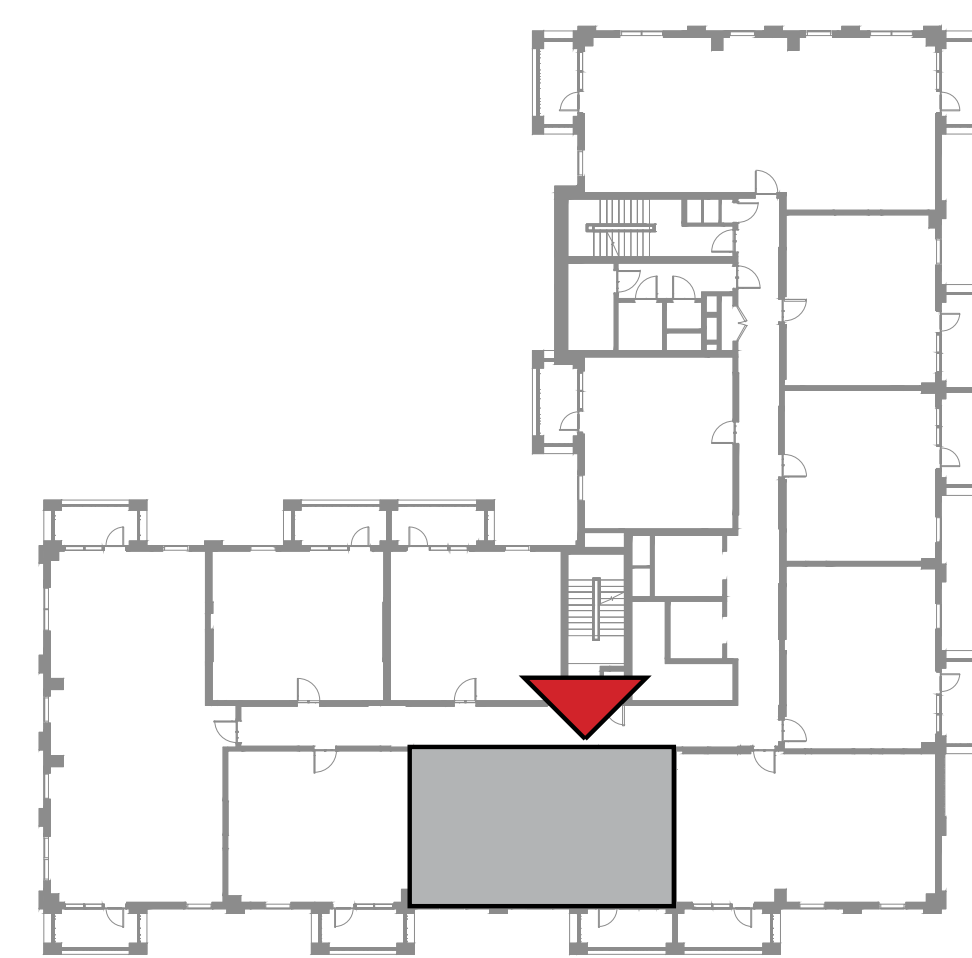
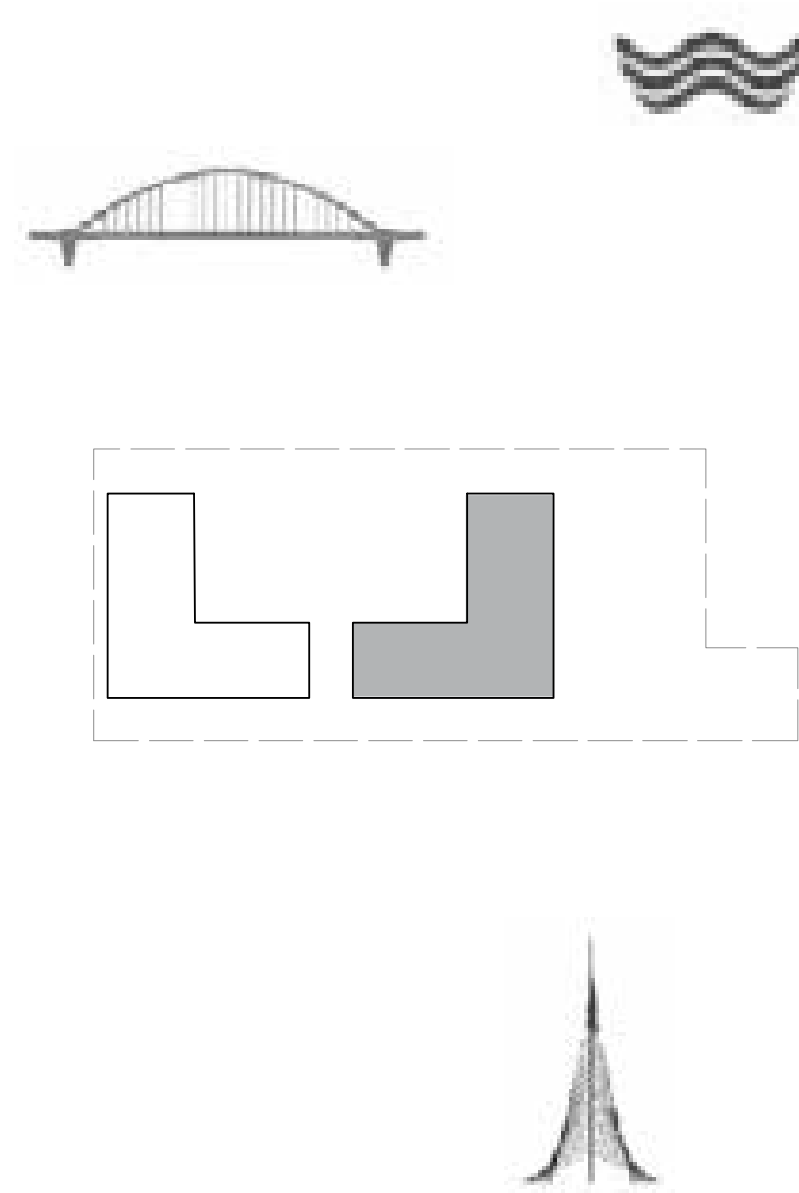
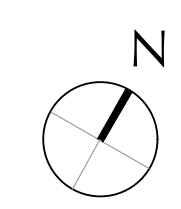
BUILDING 2

LEVEL 2, 3, 4, 5, 6

UNIT 206, 306, 406, 506, 606

2 BEDROOM

|                |             |               |
|----------------|-------------|---------------|
| APARTMENT AREA | 83.71 SQ.M. | 901.05 SQ.FT. |
| BALCONY AREA   | 8.40 SQ.M.  | 90.42 SQ.FT.  |
| TOTAL AREA     | 92.11 SQ.M. | 991.47 SQ.FT. |



FLOOR PLAN 1. All dimensions are in imperial and metric, and measured from finish to finish excluding construction tolerances. 2. All materials, dimensions, and drawings are approximate only. 3. Information is subject to change without notice, at developer's absolute discretion. 4. Actual area may vary from the stated area. 5. Drawings not to scale. 6. All images used are for illustrative purposes only and do not represent the actual size, features, specifications, fittings, and furnishings. 7. The developer reserves the right to make revisions / alterations, at it's absolute discretion, without any liability whatsoever.



DUBAI CREEK  
HARBOUR

SURF AT  
CREEK BEACH

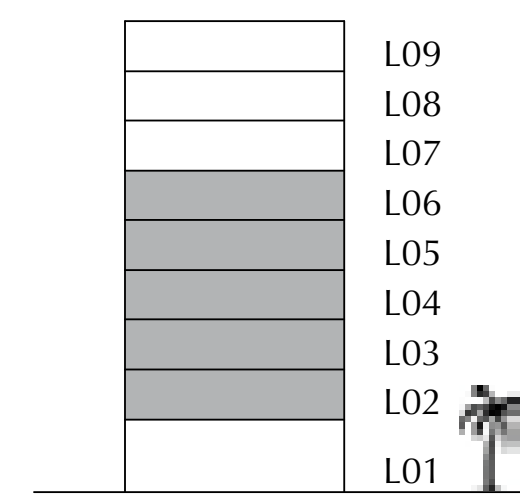
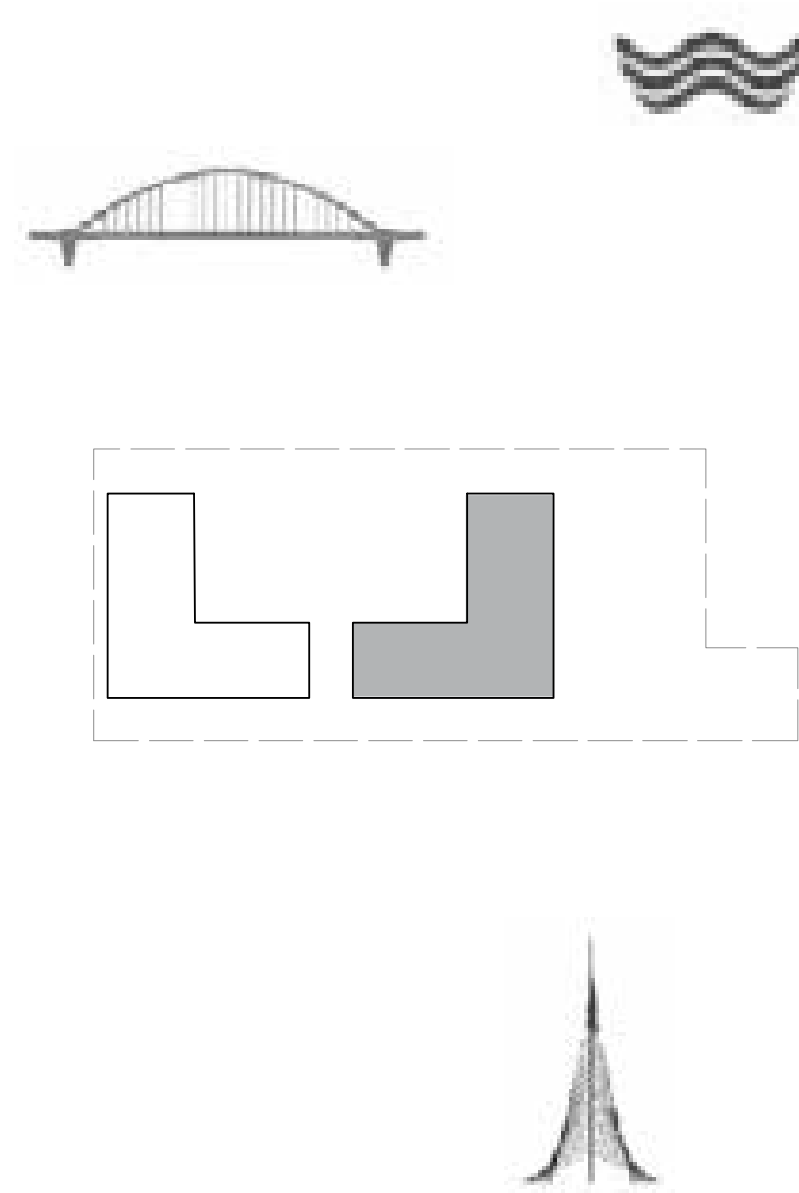
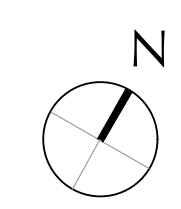
BUILDING 2

LEVEL 2, 3, 4, 5, 6

UNIT 207, 307, 407, 507, 607

1 BEDROOM

|                |             |               |
|----------------|-------------|---------------|
| APARTMENT AREA | 58.72 SQ.M. | 632.06 SQ.FT. |
| BALCONY AREA   | 7.40 SQ.M.  | 79.65 SQ.FT.  |
| TOTAL AREA     | 66.12 SQ.M. | 711.71 SQ.FT. |



FLOOR PLAN 1. All dimensions are in imperial and metric, and measured from finish to finish excluding construction tolerances. 2. All materials, dimensions, and drawings are approximate only. 3. Information is subject to change without notice, at developer's absolute discretion. 4. Actual area may vary from the stated area. 5. Drawings not to scale. 6. All images used are for illustrative purposes only and do not represent the actual size, features, specifications, fittings, and furnishings. 7. The developer reserves the right to make revisions / alterations, at it's absolute discretion, without any liability whatsoever.

DUBAI CREEK  
HARBOUR

SURF AT  
CREEK BEACH

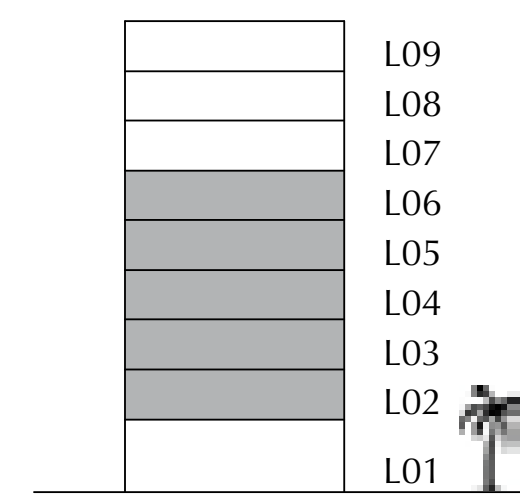
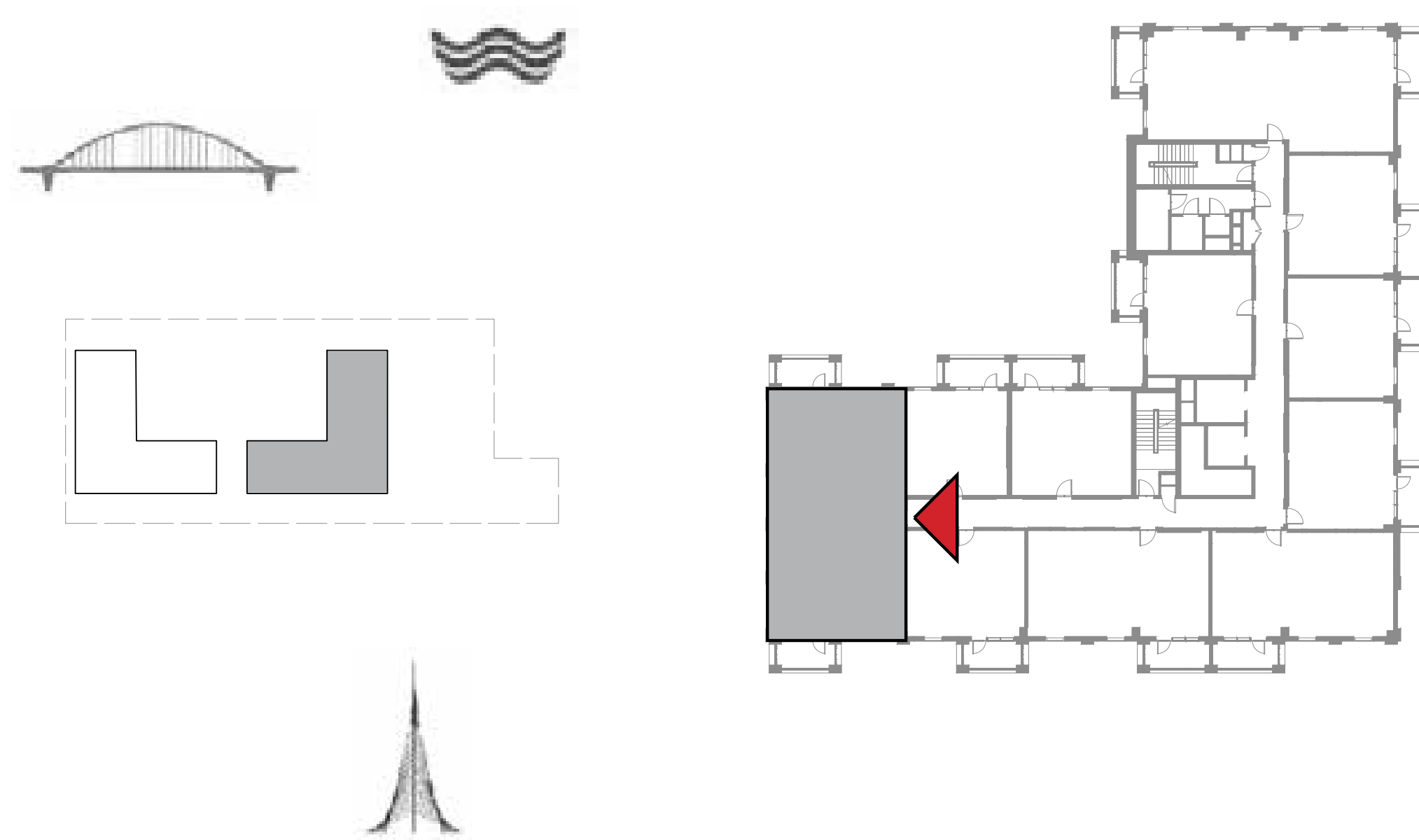
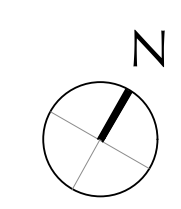
BUILDING 2

LEVEL 2, 3, 4, 5, 6

UNIT 208, 308, 408, 508, 608

3 BEDROOM

|                |              |                |
|----------------|--------------|----------------|
| APARTMENT AREA | 126.98 SQ.M. | 1366.80 SQ.FT. |
| BALCONY AREA   | 14.79 SQ.M.  | 159.20 SQ.FT.  |
| TOTAL AREA     | 141.77 SQ.M. | 1526.00 SQ.FT. |



FLOOR PLAN 1. All dimensions are in imperial and metric, and measured from finish to finish excluding construction tolerances. 2. All materials, dimensions, and drawings are approximate only. 3. Information is subject to change without notice, at developer's absolute discretion. 4. Actual area may vary from the stated area. 5. Drawings not to scale. 6. All images used are for illustrative purposes only and do not represent the actual size, features, specifications, fittings, and furnishings. 7. The developer reserves the right to make revisions / alterations, at it's absolute discretion, without any liability whatsoever.