



4 Bedroom Villa Type 'A'

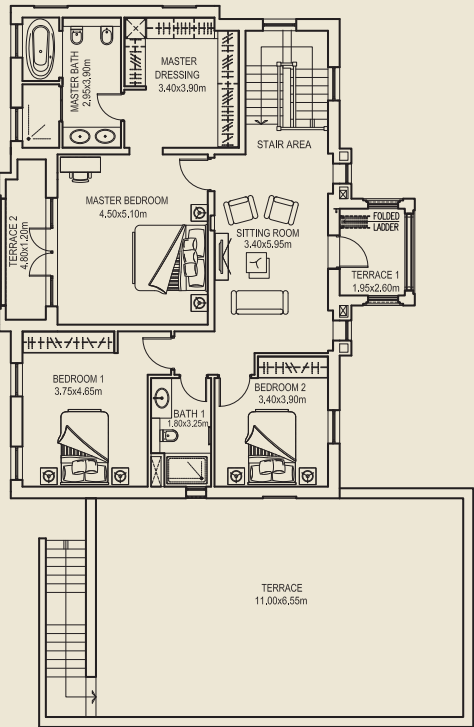
Gross floor area = 506.06 sq.m (5,447.18 sq.ft)
Total terrace = 151.05 sq.m (1,625.89 sq.ft)
Accessible terraces: 3
Individual plot size: 600 sq.m (6,458 sq.ft)



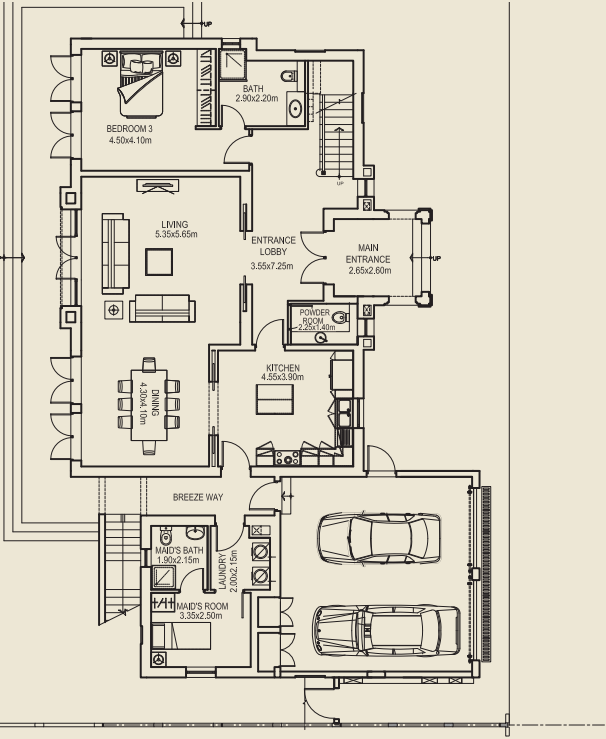
4 Bedroom Villa Type 'B'

Gross floor area = 455.2 sq.m (4,900 sq.ft)
Total terrace = 110.01 sq.m (1,184.14 sq.ft)
Accessible terraces: 3
Individual plot size: 600 sq.m (6,458 sq.ft)

First Floor Plan

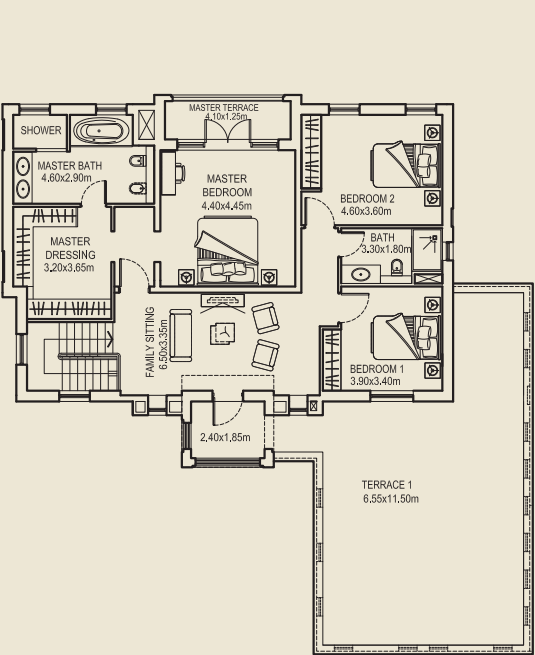


Ground Floor Plan

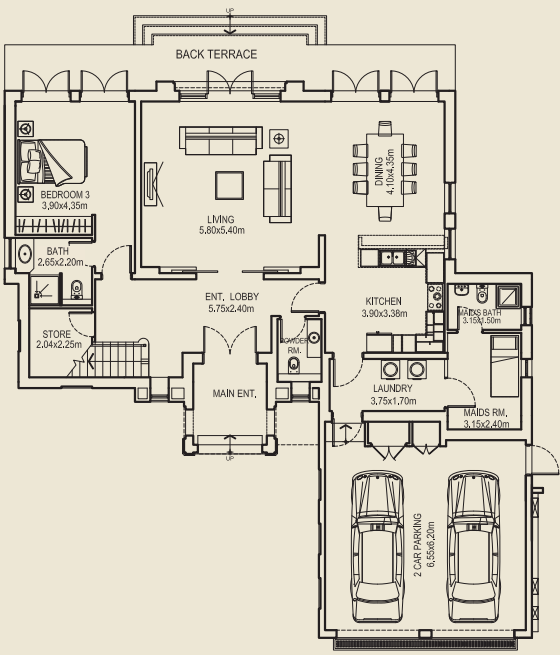


Floor plan: Numbers, square footage and floor plans are approximate. Final dimensions, square footage and floor plans may vary.

First Floor Plan



Ground Floor Plan



Floor plan: Numbers, square footage and floor plans are approximate. Final dimensions, square footage and floor plans may vary.



3 Bedroom Terrace Home (Middle)

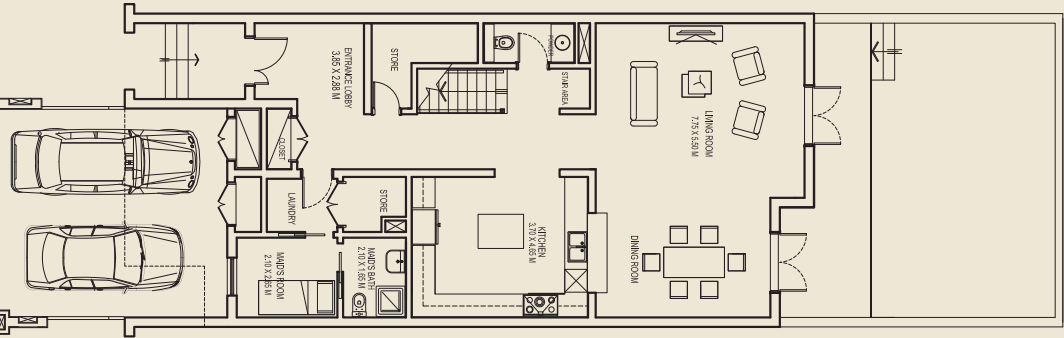
Gross floor area = 301.21 sq.m (3,242.20 sq.ft)
Total terrace = 65.79 sq.m (708.16 sq.ft)
Accessible terraces: 2
Individual plot size: 224 sq.m (2,411 sq.ft)



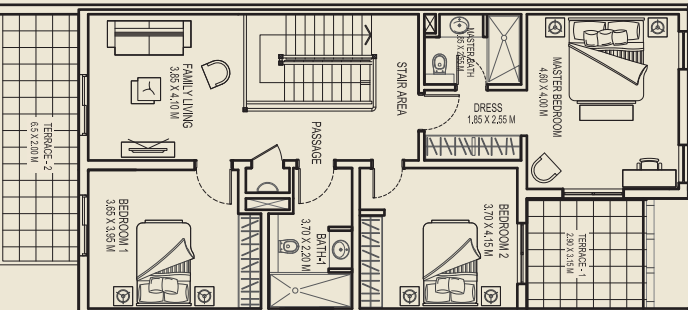
3 Bedroom Terrace Home (Corner)

Gross floor area = 301.21 sq.m (3,242.20 sq.ft)
Total terrace = 65.79 sq.m (708.16 sq.ft)
Accessible terraces: 2
Individual plot size: 224 sq.m (2,411 sq.ft)

Ground Floor Plan

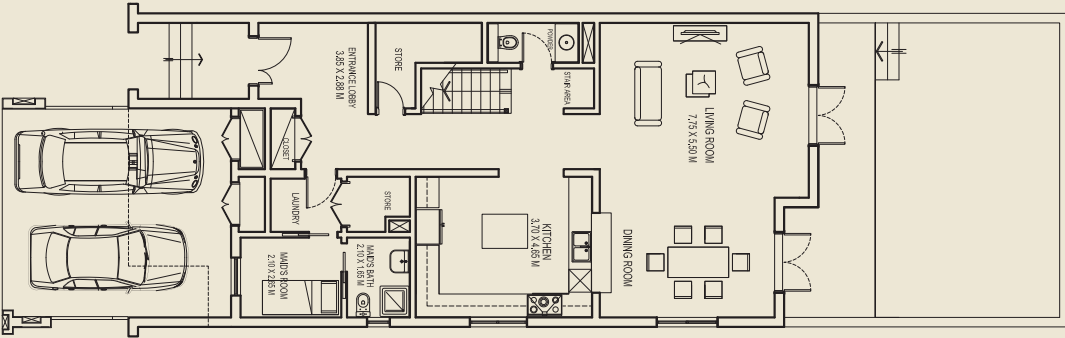


First Floor Plan

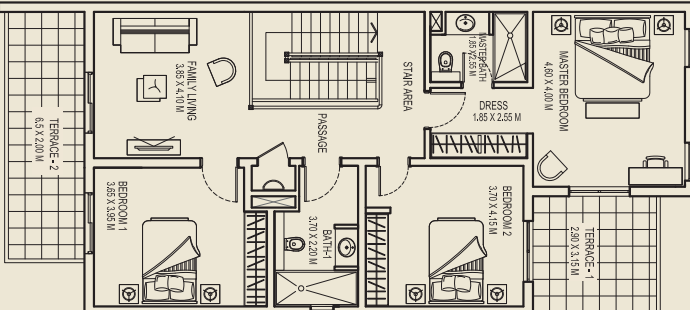


Floor plan: Numbers, square footage and floor plans are approximate. Final dimensions, square footage and floor plans may vary.

Ground Floor Plan



First Floor Plan



Floor plan: Numbers, square footage and floor plans are approximate. Final dimensions, square footage and floor plans may vary.



For more information or to book a viewing tour get in touch
with our Off Plan & Investment team today:

+971 4 302 5800

info@hausandhaus.com

www.hausandhaus.com

'Agency of the Year 2020 Dubai' – Voted by  bayut and dubizzle