

ONE
PALM

Managed by

)(*Dorchester Collection*

SERENITY FOUND

FIRST LIGHT

THE ART OF LUXURY LIVING



THE ULTIMATE ADDRESS

Completed in 2006, Palm Jumeirah is unquestionably Dubai's most spectacular location and a world icon. A marvel of modern engineering, the island boasts pristine beaches surrounded by the crystal blue waters of the Arabian Gulf – a prime destination for those who can appreciate an ultra-exclusive lifestyle. This one-of-a-kind setting now features a remarkable collection of stunning residences at its most prime position. Omniyat is proud to present One Palm.




ONE
PALM
Managed by
 *Dorchester Collection*



A RESIDENCE ON DUBAI'S MOST ICONIC LANDMARK

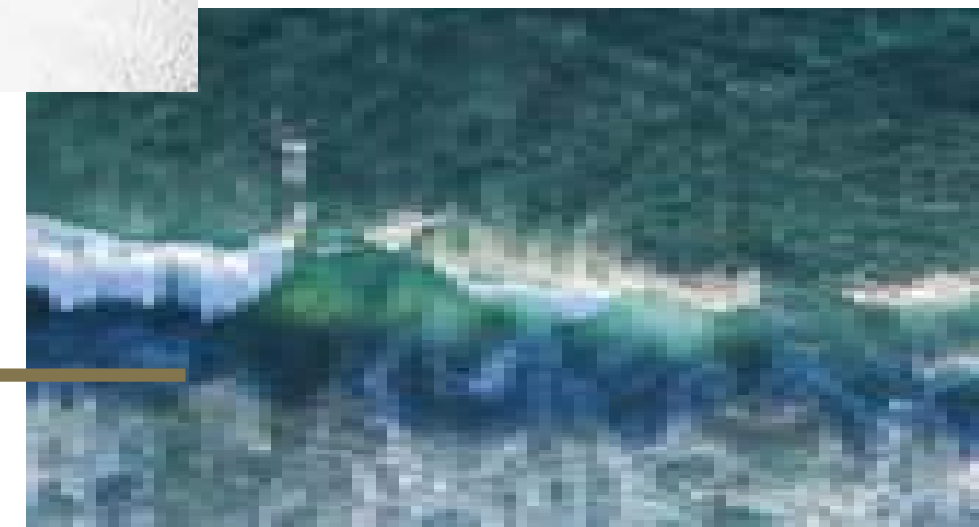


Palm Jumeirah

Renowned for ultra-modern architecture, the finest in high-end retail and a vibrant, exciting nightlife, Dubai is the world's premier locale for lavishness and grandeur. At its heart, Palm Jumeirah represents the absolute best this pearl of a city has to offer.

With its prime position on the Arabian Gulf, already home to some of the world's most renowned five-star hotels, Palm Jumeirah is one of this metropolis' most coveted destinations.

And from this international landmark's number one plot, One Palm presents pristine beachfront living that perfectly captures the essence of Dubai's cosmopolitan allure.



AT THE CENTRE
OF THE VERY BEST
OF DUBAI

BURJ AL ARAB	1	5	ATLANTIS, THE PALM
ONE & ONLY THE PALM	2	6	SOFITEL HOTEL, THE PALM
JUMEIRAH ZABEEL SARAY	3	7	WALDORF ASTORIA DUBAI
KEMPINSKI HOTEL	4	8	RIXOS, THE PALM DUBAI



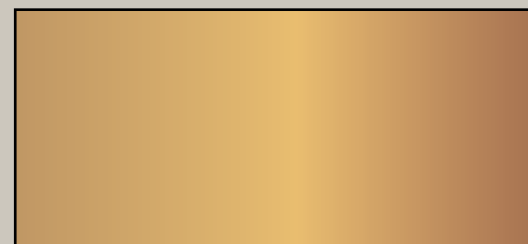
ONE

ONE OF A KIND

One Palm is a completely re-imagined approach to elegance and exclusivity. Iconic architecture, sprawling layouts, unbeatable amenities, lush green spaces, and the most sought-after interior features make One Palm more than a residence – a veritable masterpiece of artful design and the pinnacle of luxurious living in all its aspects.



A LIMITED COLLECTION OF
94 ULTRA-EXCLUSIVE HOMES,
DESIGNED FOR LIFE LIVED
IN INFINITE ABUNDANCE



A STRIKING EDIFICE BEFITTING A WORLD- FAMOUS LANDMARK

With a stunning city skyline and the unmistakable Palm Jumeirah set upon the glimmering Arabian Gulf as a backdrop, this is your home at the world's most thrilling location. Each spectacular, light-filled residence evokes inspiration around every corner. One Palm offers a new level of sumptuous indulgence, for connoisseurs of perfection.

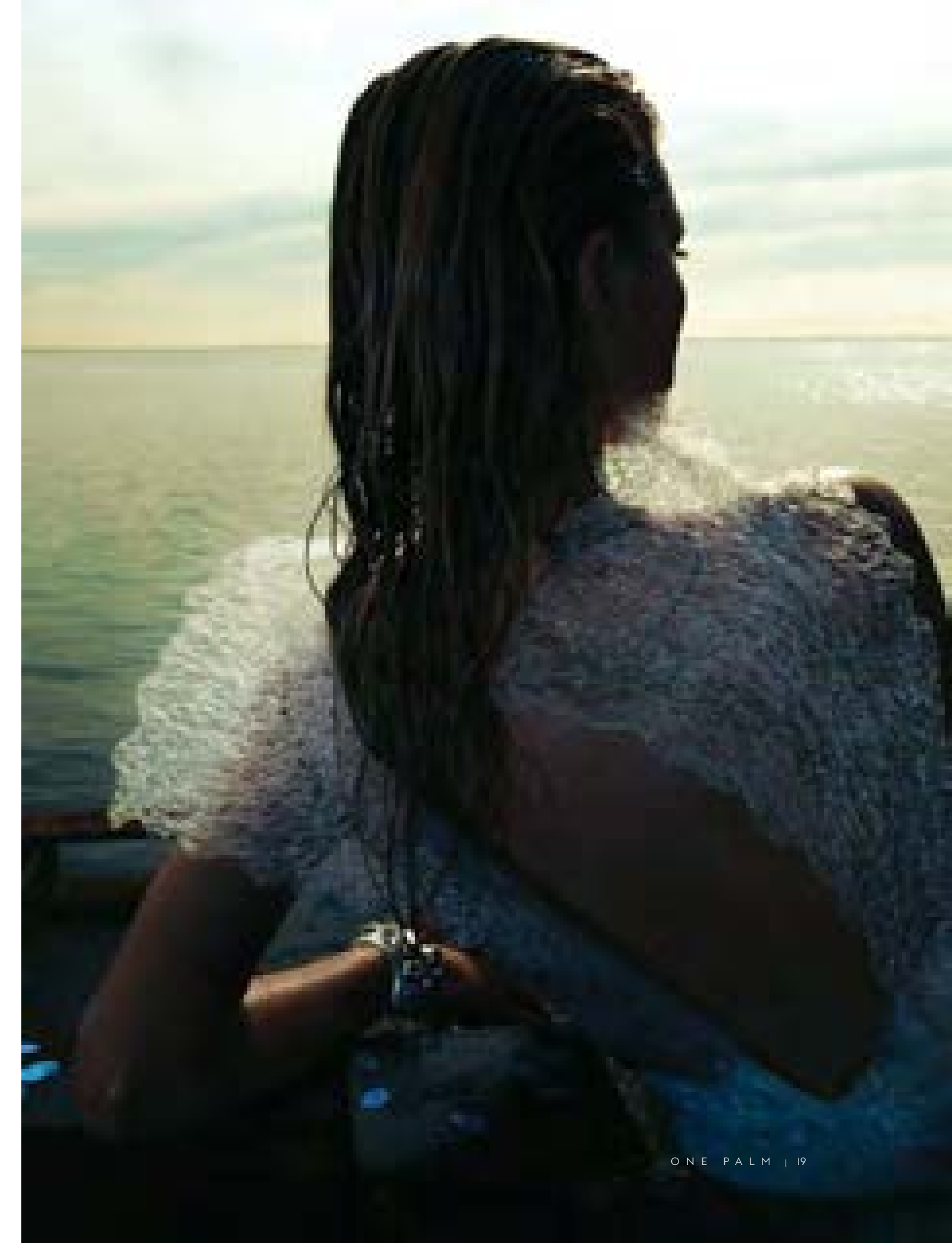




The timeless elegance of your home at One Palm deserves a backdrop that sets it off like a precious jewel in an elegant setting. Floor-to-ceiling glass enables you to look out over sweeping, 360-degree vistas of the Gulf and the exciting Dubai skyline in an inspiring, ever-changing display of sea, sky and light.



UNLIKE ANYTHING BEFORE IT



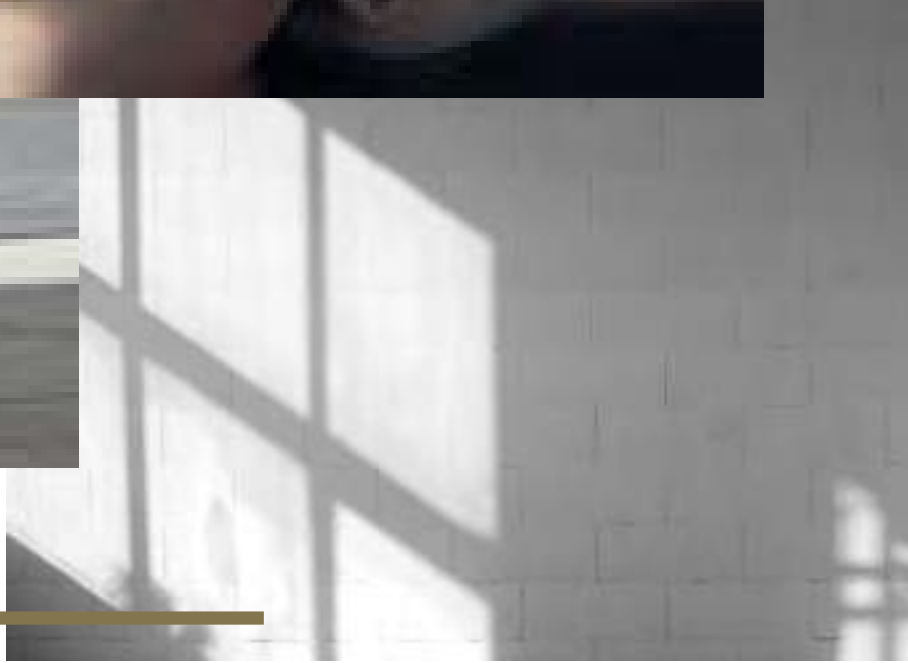
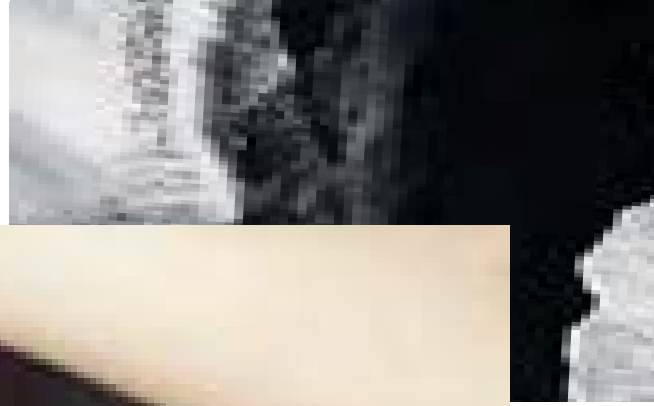
ABOVE

ABOVE IT ALL

Cutting-edge architecture, exclusively designed luscious interiors, the seamless coherence of privacy and association, make your home at One Palm truly a cut above everything else. But what makes One Palm even more spectacular is the sense of freedom, infinity and true bliss that comes from enjoying daily views that encompass everything on the horizon and beyond.







Timeless Elegance

VIEWS TO INSPIRE

Welcome to your home, where minimalist beauty meets an exquisite, staggered layout. The strikingly consonant design of One Palm gives you both privacy and interaction. With three separate cores making up the structure, each elevator leads to no more than two residences. Working in conjunction with the natural environment, One Palm uses the brilliant natural light of Dubai along with transcendent green spaces to offer a home that is truly a unique pearl.





MANAGED BY

)(*Dorchester Collection*

ONE PALM IS MANAGED
BY DORCHESTER COLLECTION,
A 5-STAR HOTEL OPERATOR WITH
A PORTFOLIO THAT BOASTS THE
WORLD'S FOREMOST LUXURY
HOTELS IN EUROPE AND THE USA.



ONE PALM

Managed by
 *Dorchester Collection*

Dorchester Collection, established in 2006, is one of the most prestigious luxury hotel management companies, with an impressive portfolio that includes nine of the world's finest and most iconic hotels in Europe and the USA.

Each hotel is an icon in its own right, a unique creation by world-renowned artists and designers, combining luxurious décor, bespoke furniture and art, masterful craftsmanship and superior design that harmonizes tradition with modernity.

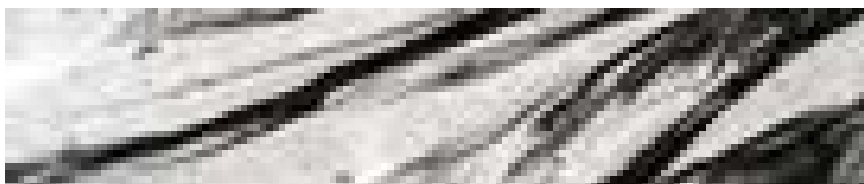
Dorchester Collection is renowned for its passion for excellence and innovation. The hotels embody the culture of each city, honoring its heritage and unique style, while simultaneously bringing out a modern kind of individuality through contemporary styling and state-of-the-art facilities.



THE DORCHESTER, LONDON



When you pass through the doors of a Dorchester Collection hotel you'll experience immediately the essence of fine living, glamorous charm, refined elegance and impeccable service. And we guarantee you'll remember it forever.



AN ICONIC ADDRESS

One Palm offers its esteemed residents the total convenience of the superb A la carte Services, making everyday living absolutely effortless.

You have at your disposal a range of services, from classics such as maintenance, doorman and valet parking, to premium services that include housekeeping, in-residence catering, unique dining events, and a butler.

The exclusive concierge is here to assist with an expert tailored selection of dining choices, events, venues, tickets, and everything else you need for a dynamic social and cultural life in the city.



CLASSIC

COMMON AREA
MAINTENANCE AND CLEANING

CONCIERGE SERVICES

VALET PARKING

LIFEGUARD AND GYM SERVICE

SECURITY SERVICES

A LA CARTE

HOUSEKEEPING, LAUNDRY,
MAINTENANCE, BESPOKE IN-RESIDENCE
CATERING SERVICES

ONE-OFF DINING EVENTS, FUNCTIONS

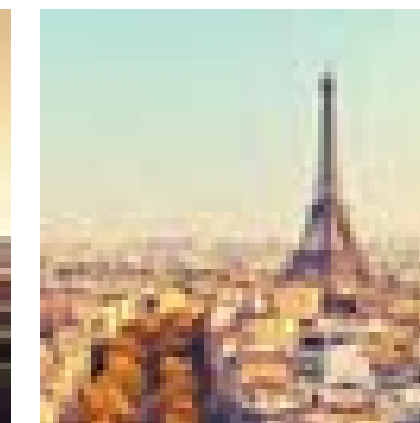


)C Dorchester *Collection*

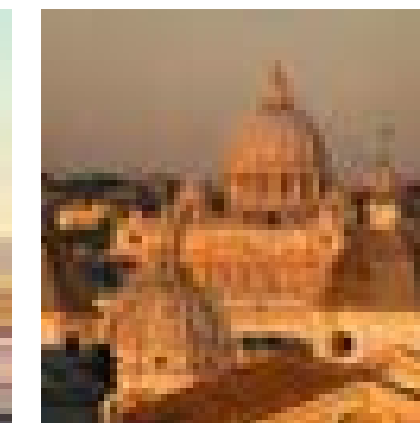
AROUND THE WORLD



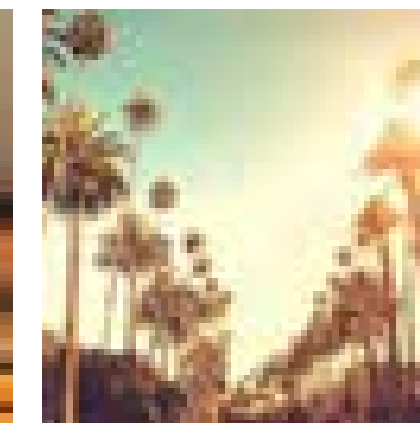
UK
LONDON & ASCOT



FRANCE
PARIS



ITALY
MILAN & ROME



USA
BEVERLY HILLS & LOS ANGELES



HOTEL BEL-AIR, LOS ANGELES



45 PARK LANE, LONDON



LE MEURICE, PARIS

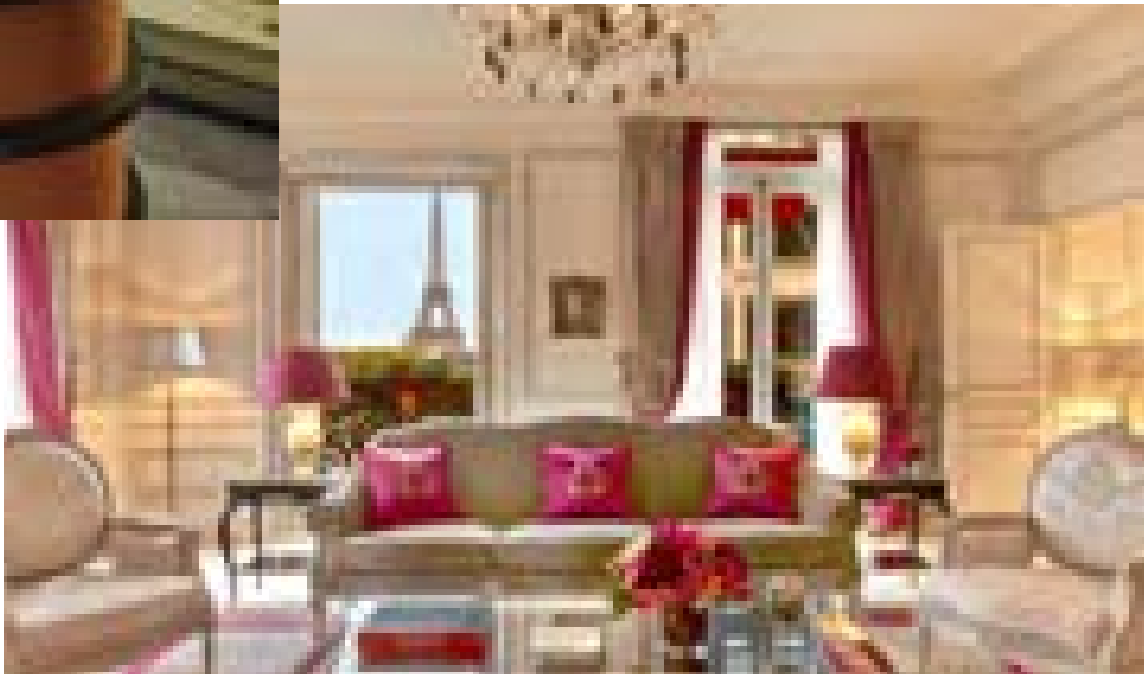
Dorchester Collection proudly encompasses the best locations in the world, including Park Lane in London, Sunset Boulevard in Beverly Hills, rue de Rivoli and avenue Montaigne in Paris, Via Ludovisi, Piazza della Repubblica in Milan, Stone Canyon Road in Los Angeles and Ascot in Berkshire.

They are the only luxury hotel company in the world with a consistent portfolio of truly iconic properties.

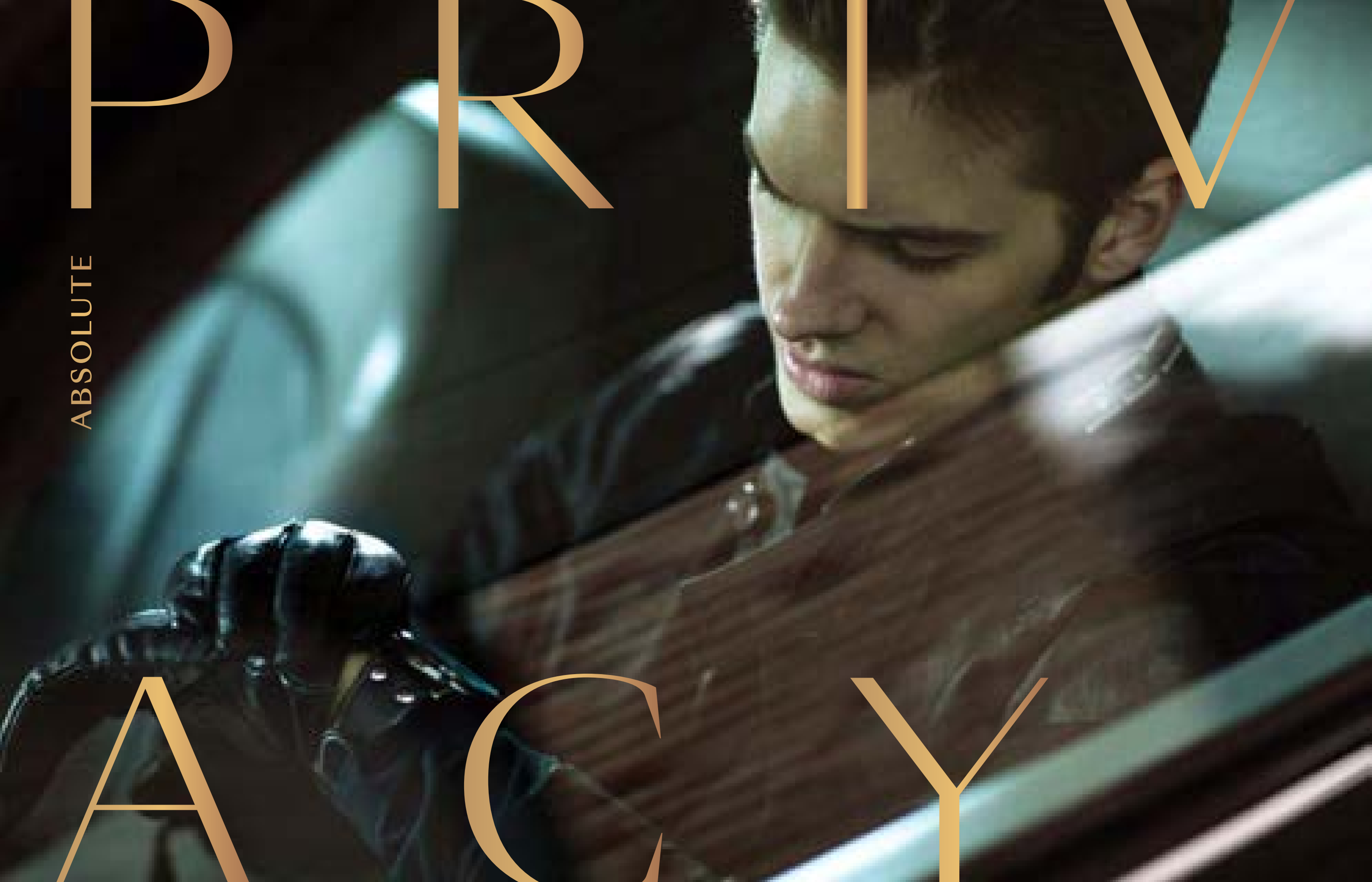
Dorchester Collection hotels are favoured by celebrities, world leaders, royalty and high society - in each city they are quite simply the place to be.



COWORTH PARK, ASCOT



HÔTEL PLAZA ATHÉNÉE, PARIS



ABSOLUTE

PRIM

ACY

SEAMLESS SECURITY ACCESS

DISCREET CCTV

STRICT IDENTITY VERIFICATION POLICY

PRIVATE JETTY

AUTOMATED GATES

SUPERSIZED PARKING SPACES



MAJESTIC ARRIVAL

Every trip home to One Palm is an occasion of unparalleled exhilaration, as the automated gates open to reveal a stunning layout featuring reflection pools and waterfalls.

Drive up to your residence in style along a pristine courtyard lined with signature artistic centrepieces from the world famous landscape architect, Vladimir Djurovic.

The beautiful panorama leads straight to the upper ground floor with a convenient and private valet drop-off area.

EXCLUSIVE ACCESS

As you make your way up to the spectacular lobby of One Palm, your car is taken down to its spacious parking place. In a building of 94 exclusive units, One Palm features over 400 car parks.

Supersized spots ensure your high performance machine or vintage beauty has ample space. The parking area also includes particular zones clearly marked for charging batteries and car grooming.



Breathtaking Welcome





ONE PALM'S IDEAL POSITION
AT THE TRUNK OF PALM
JUMEIRAH PROVIDES RESIDENTS
A PRIVATE JETTY FOR ARRIVAL
BY SEA DIRECTLY FROM THE
ARABIAN GULF.

1st

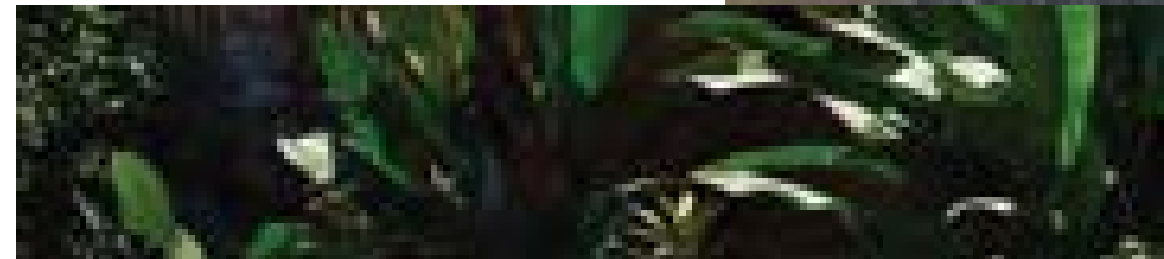
SCENIC MASTERPIECE

One Palm is a genuine haven of majestic natural beauty and absolute privacy. It's designed to provide the utmost comfort through the perfect symmetry of ingenuity and natural grace.





EXQUISITE AND REMARKABLE



Plunge Pool

INFINITE BEAUTY

World-renowned master landscape architect Vladimir Djurovic has brought his groundbreaking vision to One Palm to create an awe-inspiring timeless landscape. At One Palm nature takes center stage. Light and mist dance throughout green gardens, offering a flawless balance of sustainability, beauty and serenity.

With lush horticulture, pure layouts and unique details the landscape inspires a sense of deep relaxation, comfort and well-being. A connection to nature and its infinite beauty emanates from its holistic integration into the design and living experience.





"OUR GUIDING DESIGN
PHILOSOPHY IS TO PUT
NATURE AT CENTER STAGE"

— Vladimir Djurovic

Moving up through the building from the lower ground floor through to the exquisite penthouse gardens, the character of the landscape changes from shaded, earthy and textured to open, airy and luminous. Water is also a constant feature throughout this unprecedented residence. With water mirrors in the main lobby, and glistening and soothing elements throughout, you'll get the feeling of being in a modern oasis of luxury.

BREATHTAKING DRIVE

The grand, cobblestone drive of One Palm is set off by, and contrasts with, the clean lines and angularity of a stunning, modern water feature. Punctuated by shade trees, plantings and stone slab bridges that invite interaction, the drive is a memorable experience for visitors and residents alike.



EXOTIC VEGETATION

The building emerges from a tropical forest that extends all the way to the beach. Lush gardens with dense, exotic vegetation offer a shaded environment around a series of water elements that frame the architecture.



Lush Gardens



TROPICAL FOREST





Highly textured, natural materials characterize the ground level gardens, providing a solid base that anchors the entire project. These gardens cater to diverse uses and experiences, from big gatherings to more intimate and contemplative moments.



LUXURIOUS LIVING

Once we move up to the apartment terraces, the textures and materiality turn more architectural following those of the interior. The building offers gardens for luxurious outdoor living to its residents in their own private terraces. Vegetation, green screens and water elements enrich the outdoor living experience of these spaces.





THE PERFECT BALANCE OF LUXURY AND TRANQUILITY

The outdoor terraces of each One Palm home are a site to behold. Framed by inspiring views of the Arabian Gulf and the city beyond, they feature refreshing plunge pools, ample space for relaxing or entertaining, and natural touches that sooth and relax. The terraces are indeed an ultra-luxurious feature, the symbol of a unique kind of freedom and unsurpassable level of comfort.



NOVEL

BRILLIANTLY HANDCRAFTED

The residences at One Palm are crafted, carefully considered environments, melding the energy at the heart of one of the world's most dynamic, young cities with the tranquility and solitude of a unique, inspiring sanctuary. Two of the world's most forward-thinking firms, Super Potato and Elicyon, have brought to life their own unique, yet symbiotic visions – each a masterpiece of interior design. Each space takes its cues by looking both outward to reflect the vibrant spirit of Dubai, while looking inward at the unique character of those who will find their refuge here, creating extraordinary homes that are a celebration of life lived to the fullest.



WELCOME TO A WORLD
WITHIN A WORLD. YOUR WORLD,
BEARING YOUR DISTINCTIVE
SIGNATURE OF ELEGANCE AND
EXCLUSIVITY, WHILE OFFERING
PEACE AND SECURITY TO ALL
WHO ENTER AND LIVE HERE.



Conceived to allow for easy access and interaction within the development or complete privacy for those seeking solitude, One Palm's three separate cores include private and semi-private lift lobbies leading to no more than two residences. From the moment you alight onto your personal lift lobby, your senses are treated to a feast of details, brilliantly handcrafted into forms that are familiar, calming and pleasing to the soul. Each piece of fine furniture, each object d'art is custom curated by you, with the careful eye and guidance of true masters of interior design.

NATURAL
DESIGN

"The original inspiration for One Palm comes from the use of stone, wood, metal and glass to create the feeling of living in the air and living amongst nature. We restructured the visual and physical attributes of materials found from legendary Japanese architecture and tearooms – iron, timber, natural stone, and bricks – to incorporate into our design to enhance the beauty of the space. I believe this is a new method of expressing natural forms. Furthermore, the importance of our design is the feeling of natural changes around us such as water, clouds, wind and light and how to express these feelings through design."

M. Sugimoto

Takashi Sugimoto
President
SUPER POTATO CO. LTD.



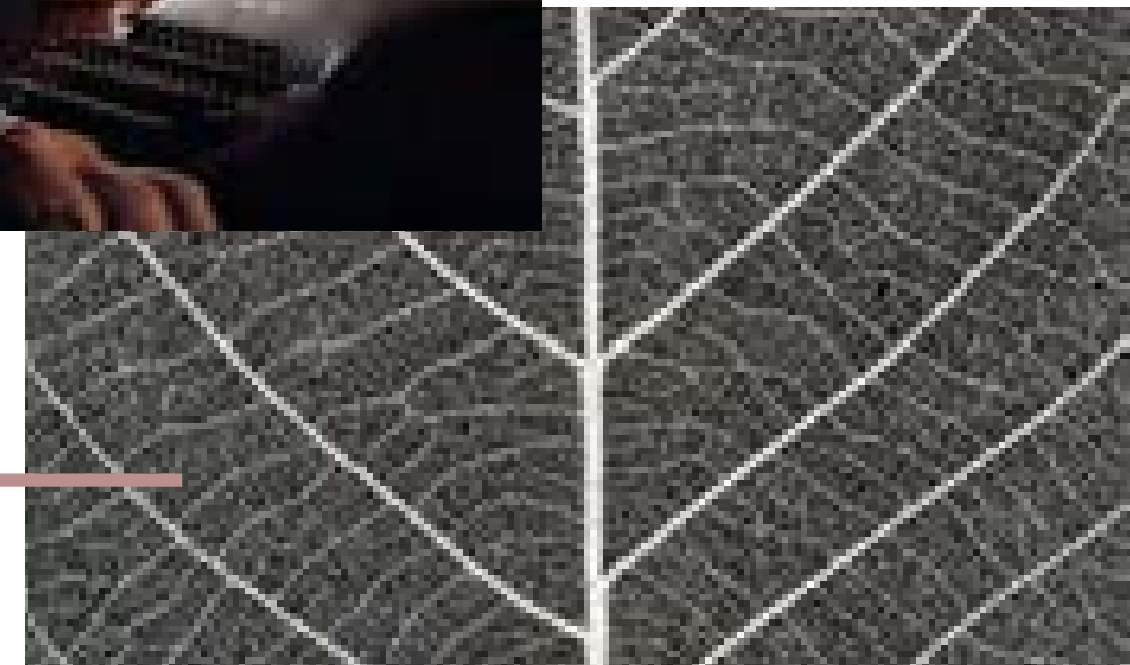


NATURAL AESTHETIC

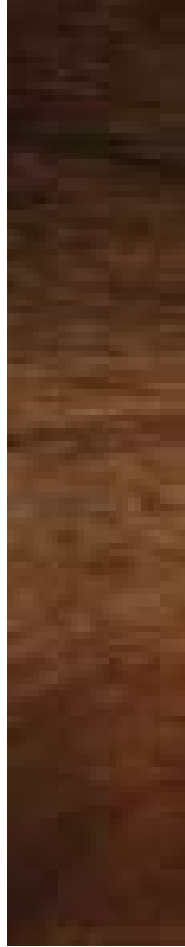
Based in Japan, the internationally acclaimed design firm Super Potato is renowned for fashioning spaces that blend an Asian sensibility while celebrating the unique character of each project's location. For their design, they use natural stone and woods with glass and steel to craft a minimalist environment that is surprisingly warm and inviting. Rounded, highly tactile forms that hearken back to George Nakashima, Isamu Noguchi and other mid-century modern classics can be found in the furniture and fittings.



Super Potato



UNIQUE CHARACTER





NATURAL DIVERSITY

The striking architectural edifice of One Palm belies the surprising tranquility enveloping the inviting, expansive interior spaces of its common areas. Their calming, minimalist yet elegant feel has been meticulously planned by famed interior firm Super Potato. From its lobby and corridors to the fitness centre, spa and business centre, residents are treated to a palette of natural, organic materials that are a feast for the senses – floors in grey and silver travertine, crown marble, woods of walnut, solid white oak and smoked eucalyptus, with accents of stainless steel hairline finishes to name only a few.



The secure private entrance to the Super Potato imagined and realized penthouse recalls elegant affluence, a tradition of hospitality, and creates a relaxing, grounding experience.

Rich and solid wood, delicate ambiance lighting, carefully selected artwork and ornaments that are both international and local in character, create a gracious, pleasant environment, a truly warm welcome home.

The entrance is a preview of the style and elegance of the entire apartment, a sneak peak into the wonderful world designed for One Palm by Super Potato.





Floor to ceiling windows flood the living area with light by day, as well as truly awe-inspiring views by night. The feeling is expansive and impressive, yet completely comfortable and inviting.



INTIMATELY BEAUTIFUL

The Super Potato designed apartment is opulent yet refined, delicate yet bold, soothing yet inspiring. Its beauty is achieved through many interconnected layers and elements.

Intimate, diverse and soothing lighting, tasteful and elegant ornaments, inspiring artwork, different yet compatible materials and textures are just some of the elements that come together to create a lovely interplay of grace and timeless elegance.



A World of Distinction





The natural design and intimate feel of the penthouse comes to life strikingly in the living area.

The impressive feature wall invokes tradition and erudition, where culture and art are an integral and pivotal element of everyday life.

The view displays simultaneously the majesty of nature and the ingenuity of manmade creation, the contrast between the sea and the sky, the modernity of Dubai and the infinity of the horizon.

The comfortable, discreet furniture creates a cosy space where one can contemplate, admire and be inspired.







Beyond ample storage for your wardrobe, the generous walk-in closets have views that amaze and invigorate.

PURE DESIGN

The understated elegance of the master bath melds a Zen-like, minimalist feel with the warmth of wood and stone elements.



Blissfully Calm





A thoroughly intimate space, replete with furnishings and a colour palette that induce a perfect sense of calm and serenity.

Relaxing Design





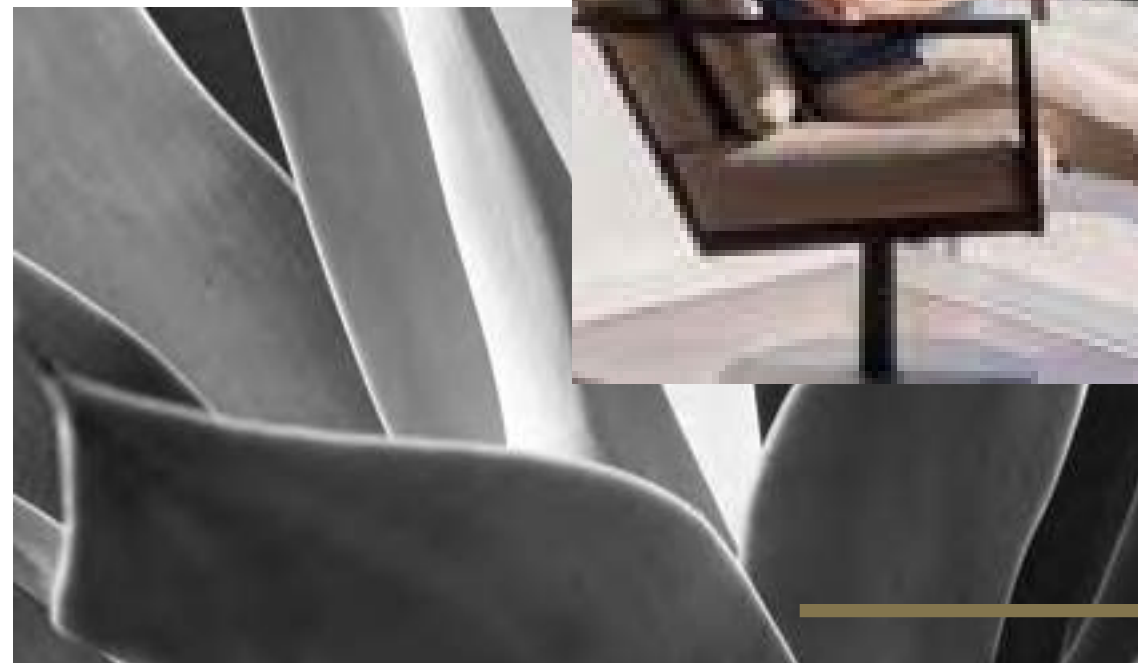
TIMELESS
DESIGN



MINIMALIST AESTHETIC

Acclaimed designers of London's One Hyde Park, Elicyon creates unique, customized spaces that elevate luxury interior design to an artform. The interior scheme in the penthouse conceptualized by Elicyon is sophisticated and modern, complementary in all aspects to the breathtaking panoramic beach views.

Natural materials and finishes, from lacquered wood and leather to stone and silk, converge in a glamorous, streamlined fashion. Elicyon's minimalist aesthetic highlights the interplay of interior and exterior motifs, in a timeless stunning look.



Acclaimed Designers



CLASSICALLY ELEGANT





The entrance to the Elicyon-designed apartment reflects and introduces the key elements of their world-renowned design and showcases their ingenuity in mimicking the natural landscape through interior spaces.

Diverse elements, materials and textures, such as smooth marble, different forms and shapes of glass and crystal, and diverse sea-inspired hues establish a continuity between the interior space and the stunning exterior landscape that inspired it.





"THE BIGGEST
PIECE OF ART IN THIS
PROPERTY IS THE VIEW"

— Charu Gandhi
Architect, Founder and Director of Elicyon



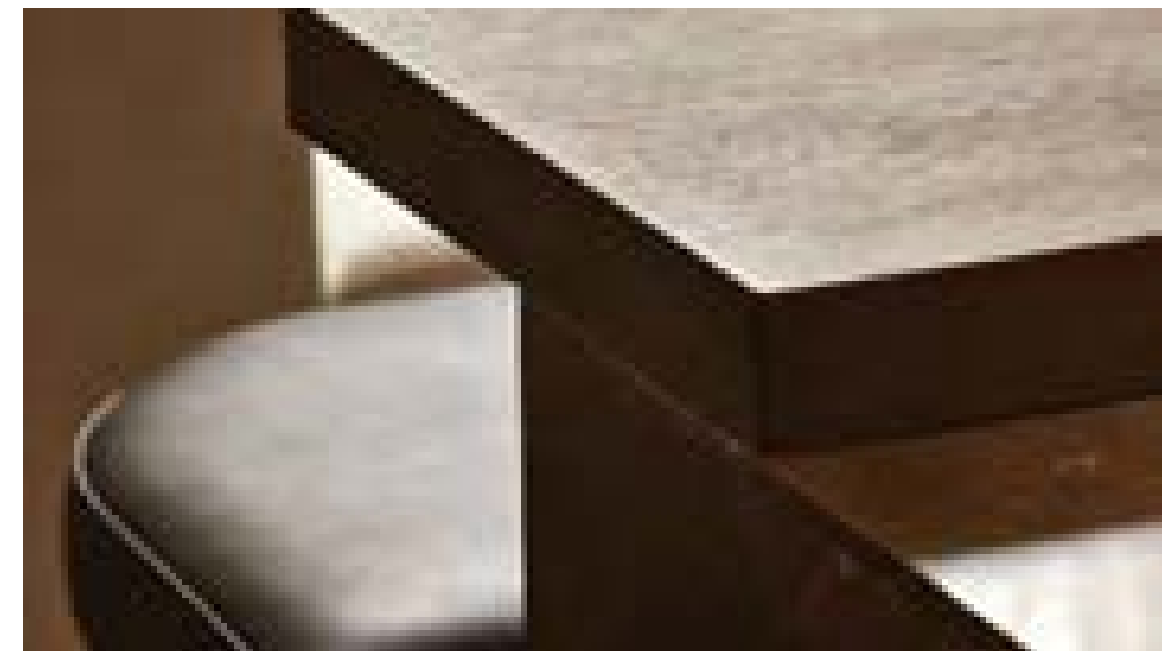
Breathtaking Views





FUNCTIONAL ELEGANCE

With such a view it's hard to imagine a better place for entertaining guests, throwing a lavish dinner party, and enjoying the simple pleasures in life.







"FOR ME, THIS SPACE CULMINATES
IN THE SCREENS AND THE ARTWORK
FRAMING THE STUNNING VIEWS.
ALL SEEN THROUGH THE LENS OF
BEAUTIFUL TEXTURES AND MATERIALS"

— Charu Gandhi
Architect, Founder and Director of Elicyon

The double living room is exquisite and magical. The splendid pieces of furniture, glass and metalwork, emerald greens and vintage metal are all bespoke and commissioned specifically for this extraordinary space.

The stunning feature wall divides the sprawling living room into a more formal section, perfect for entertaining, open to the world both from inside and outside, and a second, more intimate, pensive, and comfortable space.

This secluded yet transparent nook is created through the playful use of an abstract arabesque pattern in the mashrabiya screens. The design creates a reference to traditional Middle Eastern architecture, creating an intimate space. Its simple, minimalist design allows for order and clarity, inspires work and efficiency, providing the possibility both to connect and disconnect, depending on your business, work or study needs.



Multi-Purpose Spaces

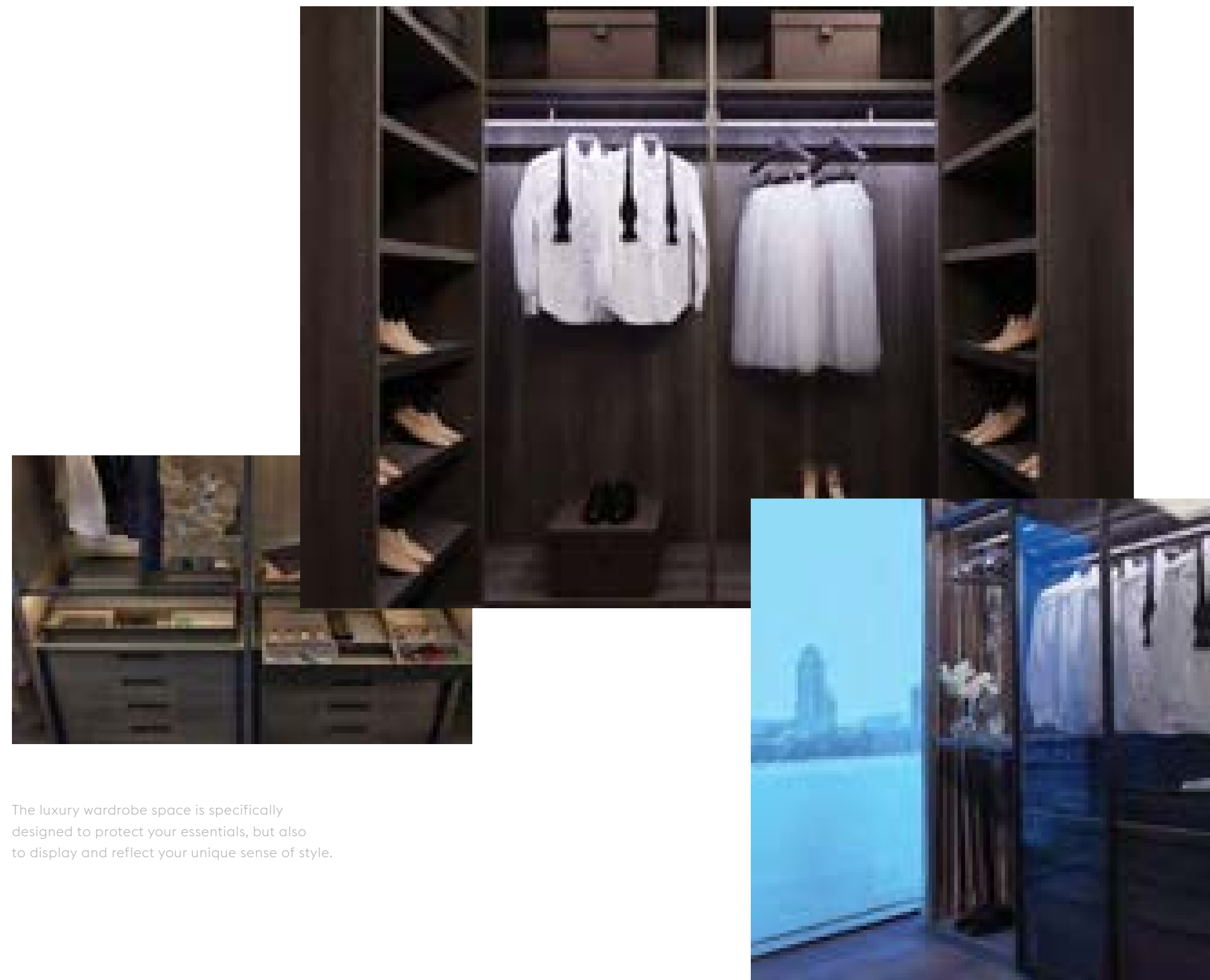




EYE-OPENING DESIGN



Beautiful Awakening



The luxury wardrobe space is specifically designed to protect your essentials, but also to display and reflect your unique sense of style.

One of the top luxurious features of the sleek and elegant bathroom is the generous bathtub with a front-row view of the sea, the sky and the city - indeed a hallmark of truly affluent living.





Natural Flow

Elicyon has incorporated the natural inspiration for the design of the apartment in each and every aspect, including a range of interesting elements such as the beautiful hand painted silk wallpapers, which blend the use of luxury materials with bespoke craftsmanship and detailing.



The media and family room is yet another secluded, comfortable space that allows you to disconnect from the everyday world and instead connect with your loved ones. You can enjoy a variety of entertainment options in the ultimate luxury style.

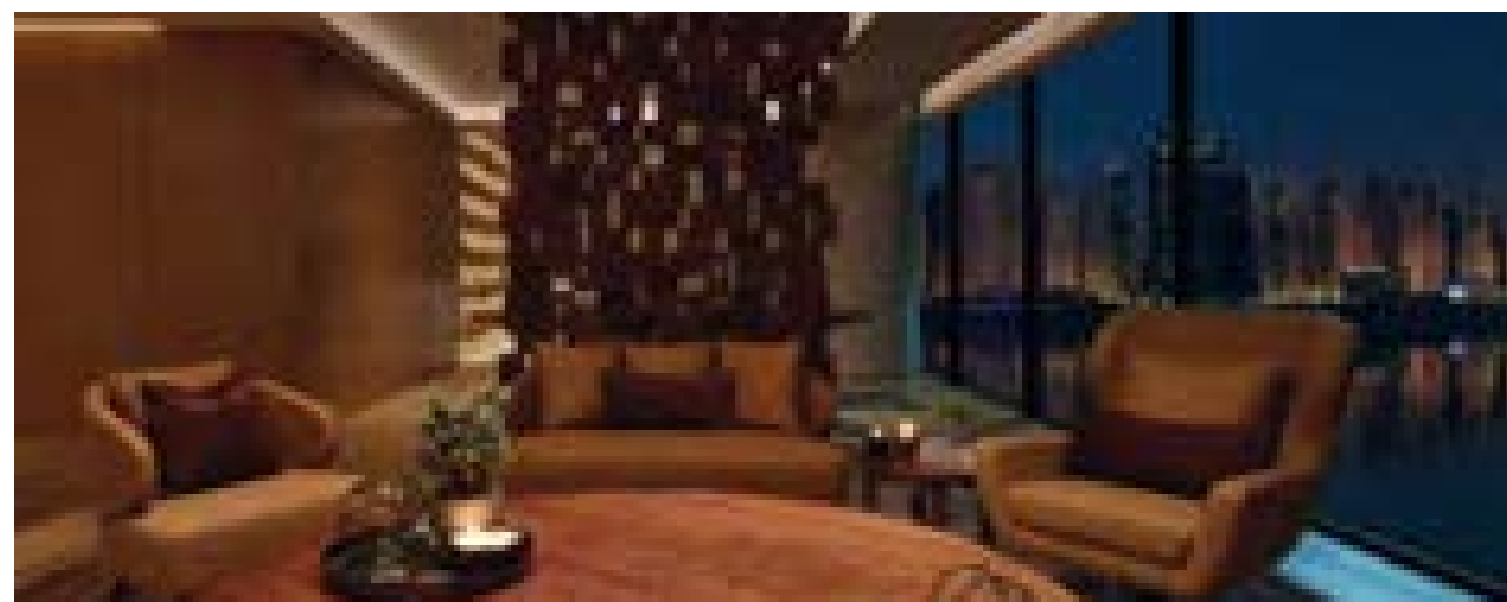
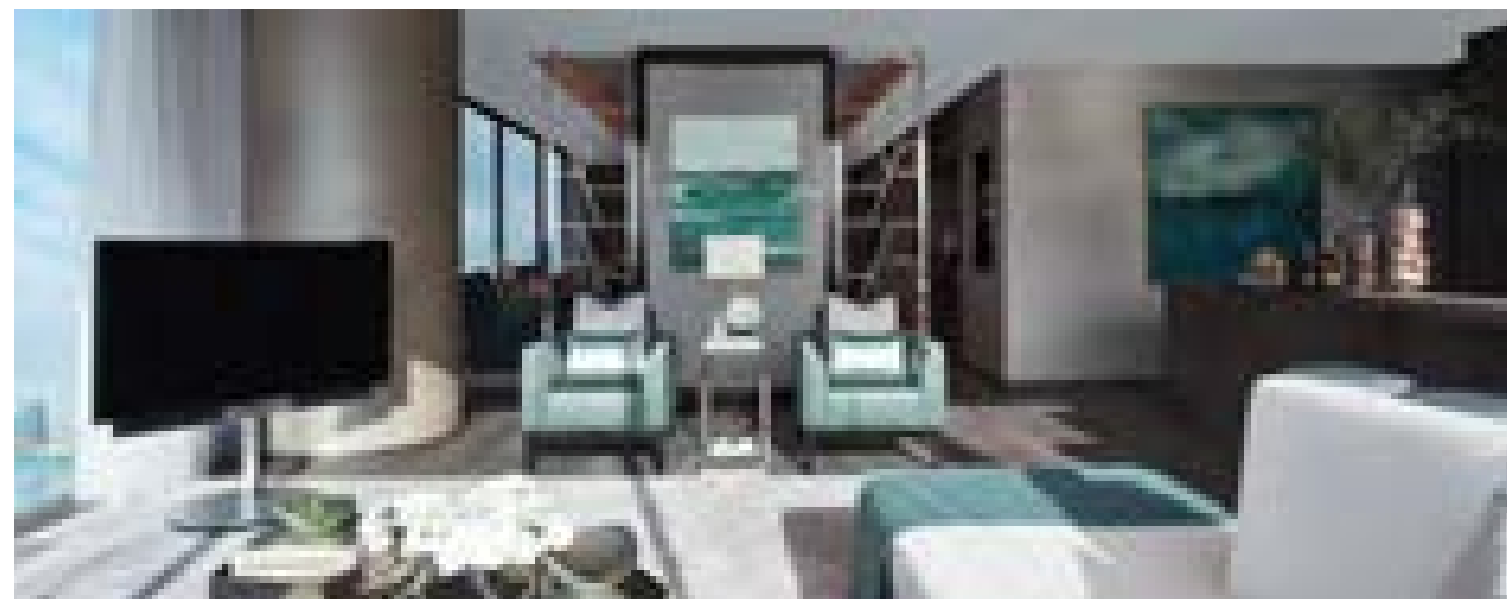




RESIDENCE

THE ART OF LIVING

- HIGHLY PERSONALIZED
- OPEN FLOOR PLANS
- COMPLETE PRIVACY
- FULLY AUTOMATED TECHNOLOGY
- FINEST MATERIALS
- STATE-OF-THE-ART APPLIANCES



Starting with absolute comfort and privacy, your home at One Palm is built around you – minimalist in approach yet ready to be custom-tailored into a highly personalized statement of sanctuary, relaxation and inspiration.

The remarkable sense of expansiveness inside each home at One Palm lends an air of palatial splendour. Yet the sweeping, open floor plans have been ingeniously designed to seamlessly accommodate areas of complete privacy. Bedrooms, bathrooms and other personal areas are cleverly separated from public spaces, providing a perfect balance of openness and seclusion.

Amazing Vision





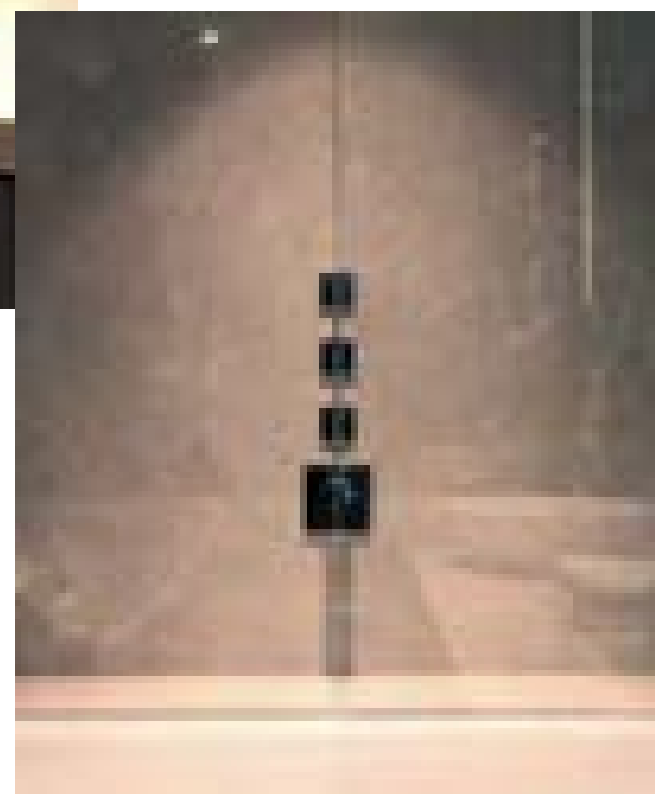
PREMIER PERFORMANCE

Every home at One Palm is outfitted with state-of-the-art appliances from industry leaders including Gaggenau and Sub Zero. Challenging the established and breaking the mold to pave the way for new, innovative ideas, these appliances offer premier performance with a sleek aesthetic. In unison they create a chic, tailored, modern and totally comfortable home that is the definition of timeless.



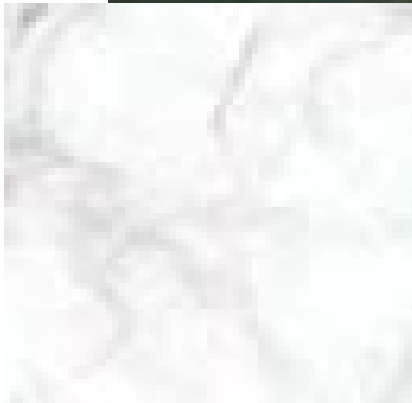


Pure and Simple



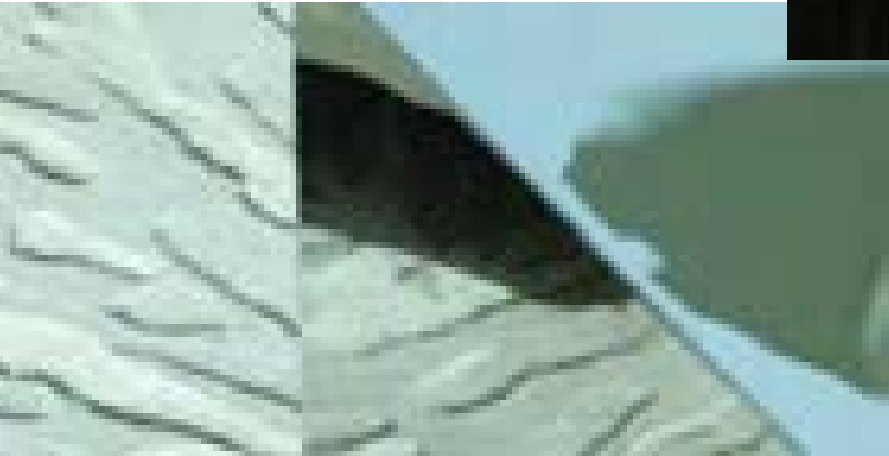
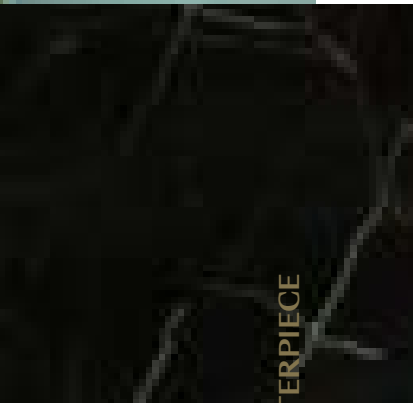
REFINED DETAILS





Finest Materials

Just beyond each door, a world of magnificence awaits. Every detail is a testament to craftsmanship, with the absolute finest materials, fit and finishes wherever one turns. From the incredible in-home appliances to a stunning, top-of- the-line kitchen, each "flow-through" home at One Palm is a unique masterpiece in its own right.



UNIQUE MASTERPIECE



Personal Approach

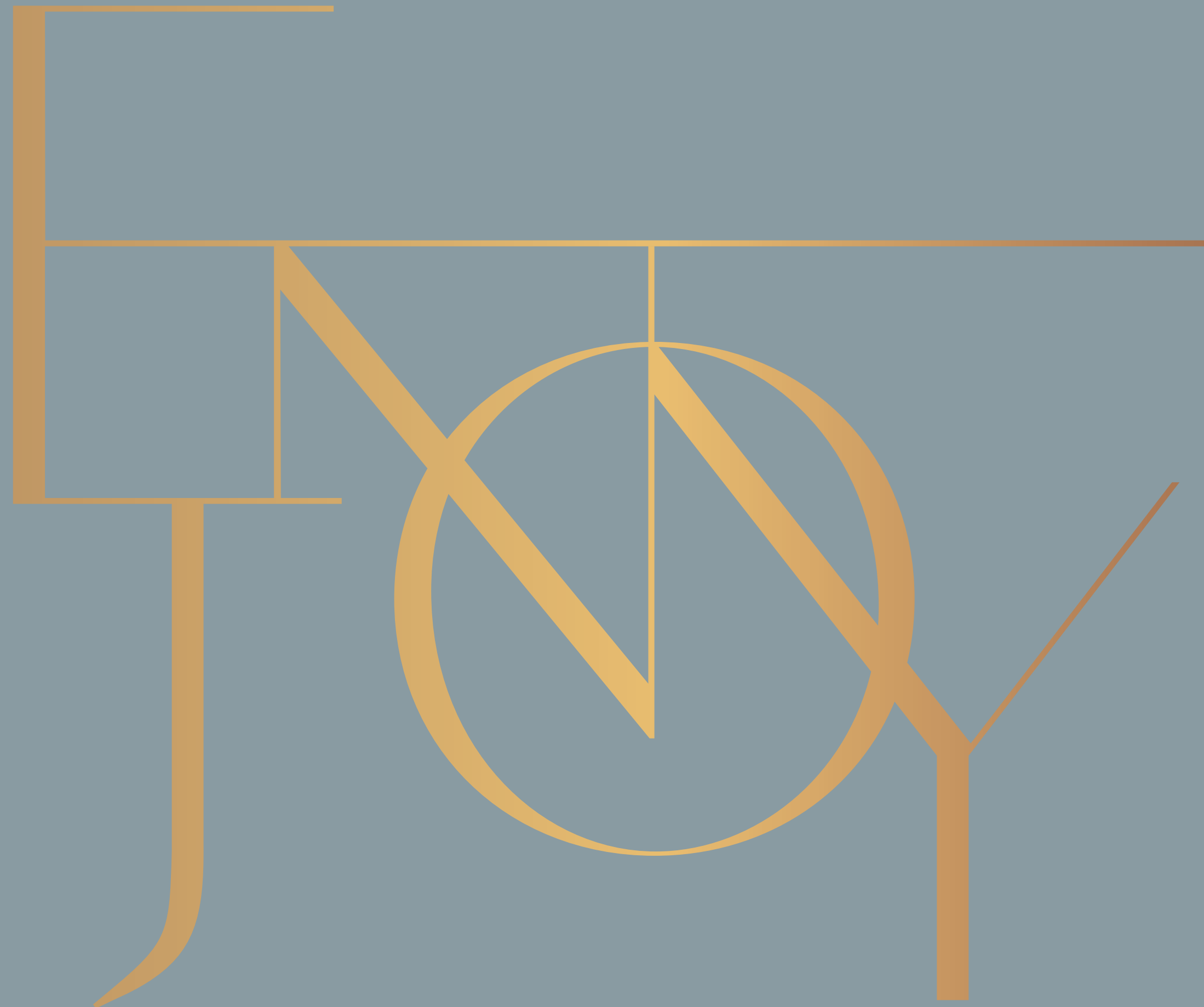
Fully automated with cutting-edge technology, One Palm is a home that recognizes you. From the concierge, your personal elevator to your apartment's lighting and air conditioning systems, everything is set to give you the perfect welcome.

Every residence is supplied with an Apple iPad for system control and customization. The Crestron app is downloadable to any smart device, providing the convenience to control the home from anywhere, anytime.

The special One Palm app is integrated into the system, allowing you to communicate efficiently with building management staff, book catering services, room service, spa treatments and anything else you need.

And with one swipe or touch you can preset customized scenes for your home, fitting it to your mood, company and needs every time.



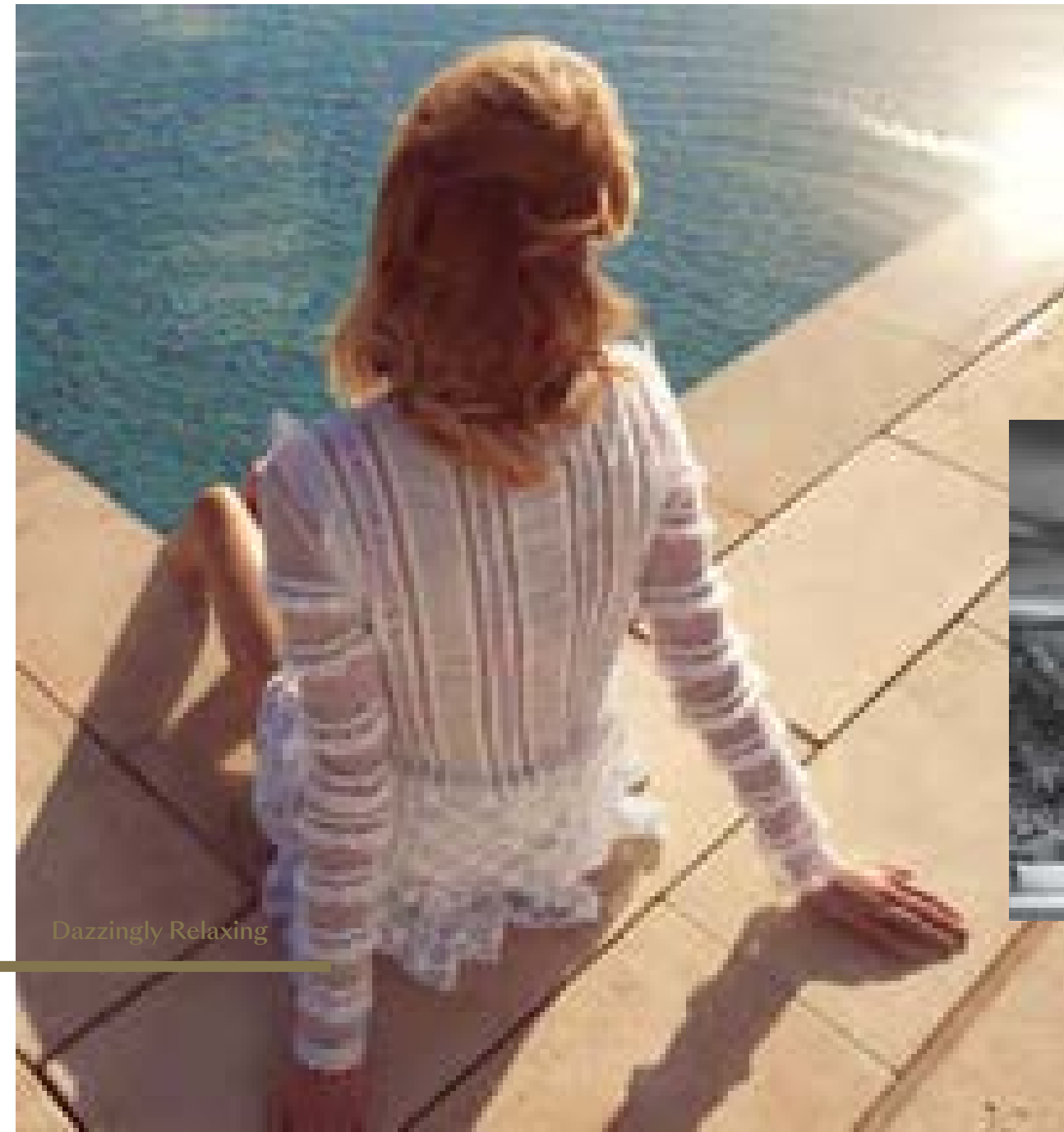


AMENITIES FOR LUXURY CONNOISSEURS

The residences at One Palm are the most opulent in a city acclaimed for extravagance. Destined to change both the landscape of Dubai and modern luxury living forever, this is your membership to the world's most exclusive club.



One Palm offers unique benefits to its esteemed residents - each one a true connoisseur of luxury and indulgence. Thus the amenities have been created with precisely such experience and expertise in mind, aiming to satisfy even the most demanding of tastes. Residents will be able to experience a dazzling array of services and amenities that nourish and rejuvenate, entertain and delight, relax and sooth. Wondrous treatments, a night at the movies at the state-of-the-art outdoor cinema, meeting facilities, lounges, library, many different swimming pools, children's areas, and much more is in store for our beloved residents.



Dazzlingly Relaxing



SOLID GOLD AMENITIES





Spa

Spa Massage, grooming and facial treatment services are at your beck and call at the One Palm Spa.

Lap Pool

Hit the lanes at the 25-meter lap pool. Situated in the lower level of One Palm, the indoor pool area can be opened up to let in the glorious natural backdrop of the grounds.

Vitality Pool

The ultimate in relaxation and rejuvenation.

Indoor Cinema

A sumptuously-appointed, state-of-the-art indoor cinema lets residents enjoy all sorts of films and programs in absolute comfort.

Outdoor Pool

Enjoy extraordinary refreshment relaxing by One Palm's grand 800 square meter pool.

Outdoor Cinema and Barbecue Area

A versatile outdoor area offers residents a truly special gathering space. Enjoy a weekend barbecue or a night under the stars - all while your favourite movie plays on the outdoor cinema.

Fitness Centre

State-of-the-art fitness equipment for residents to enjoy.

Business Centre, Library and Meeting Rooms

Everything you need for work, research and enjoyment.

Playroom

The ideal place to bring your little ones to play and socialize.



As the pinnacle of luxurious living One Palm naturally provides a spectacular fine-dining experience - showcasing haute-cuisine with a spontaneous twist. One is for visitors while the other is exclusively for residents, always available to create a unique culinary delight, to put together a romantic candlelight dinner in the privacy of your home, or create a fun dining event on your breathtaking terrace.

For more casual dining there is the shimmering beachfront restaurant. It's the ideal place to kick back after a fun day at the beach or a leisurely stroll. Enjoy the feel of the soft pearly sand, the exquisite freedom of the sea, and have a fun aperitivo while the sun sets, or sink your teeth into the most delicious seafood ever.



Spectacular Dining



AMENITIES PLAN LOWER LEVEL

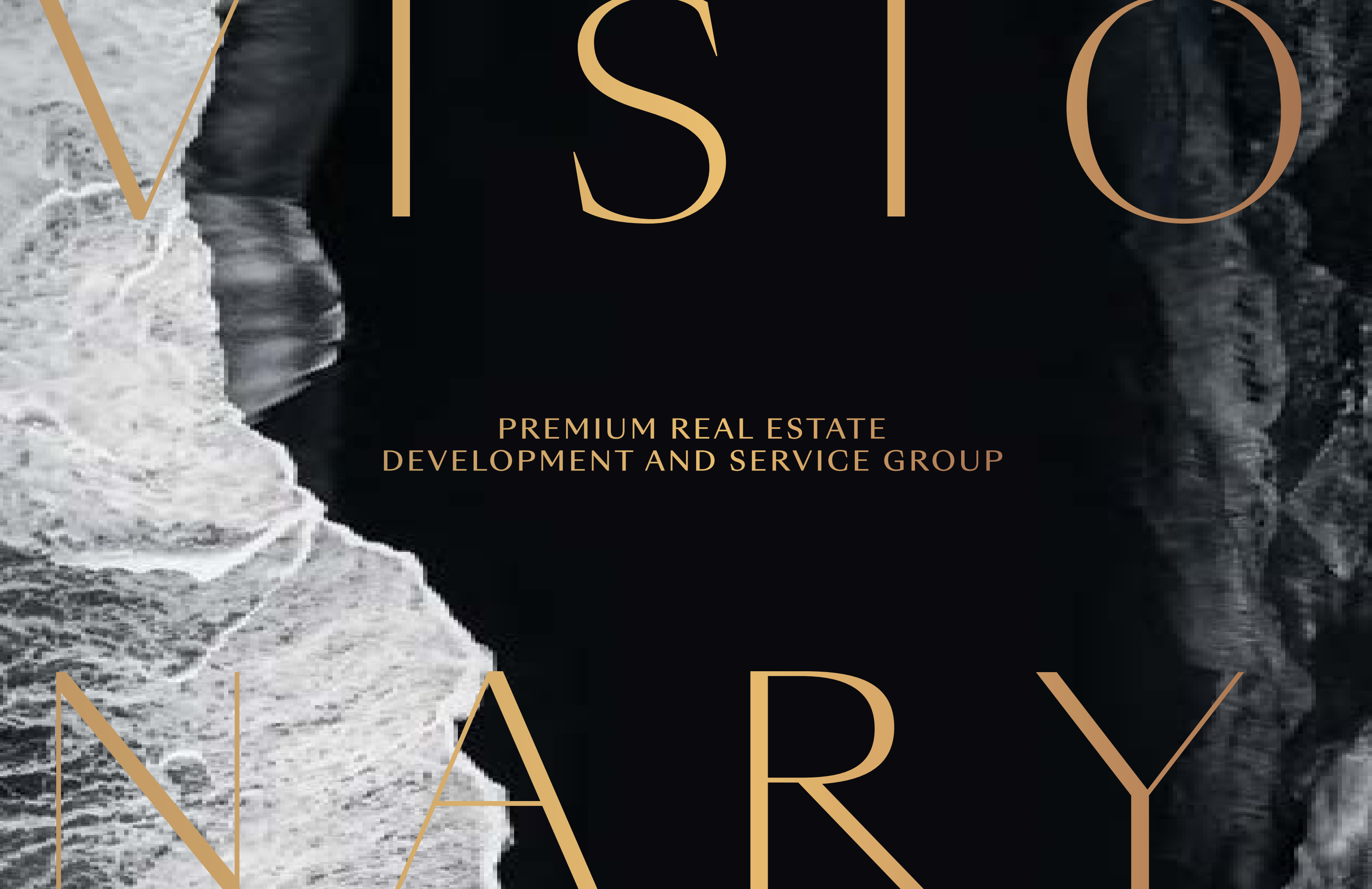
- | | | | |
|----------------|---|----|---------------|
| OUTDOOR POOL | 1 | 7 | LAP POOL |
| OUTDOOR CINEMA | 2 | 8 | INDOOR CINEMA |
| PLAYROOM | 3 | 9 | RESTAURANT |
| SPA | 4 | 10 | JETTY |
| GYMNASIUM | 5 | 11 | BEACH CLUB |
| VITALITY POOL | 6 | 12 | PRIVATE BEACH |



AMENITIES PLAN UPPER LEVEL

- 1 BUSINESS CENTRE & LIBRARY
- 2 MAIN LOBBY/RECEPTION
- 3 MEETING ROOM
- 4 VALET & DROP-OFF





PREMIUM REAL ESTATE DEVELOPMENT AND SERVICE GROUP

One of the most visionary real-estate development and service groups in the Gulf Region, Omniyat creates living canvases of residential, commercial, hospitality and retail spaces – a one-of-a-kind premium experience. We approach the design, development and management of each Omniyat property as if it were a unique work of art. Just as there is no mistaking a Picasso or a Van Gogh, there is no mistaking that you are anywhere but in an Omniyat property.

We nurture and maintain close relationships with the world's leading architects, engineers, interior designers and artists. Each project is unique, designed to create a superior return on investment and to give every home owner the Omniyat guarantee of living in a bespoke space that reflects their personality, achievements and ambitions.

Omniyat's impressive portfolio, with a combined gross realization of over USD 6.4 billion, includes stars such as One Palm managed by Dorchester Collection, The Opus by Zaha Hadid, The Sterling, Langham Place Downtown Dubai and Private Residences Managed by Dorchester Collection.

OMNIYAT®



PRIVATE RESIDENCES MANAGED BY DORCHESTER COLLECTION

Private Residences managed by Dorchester Collection is the most elite new development in the heart of New Dubai, a stunning Marasi landmark, with only 47 opulent and incredibly designed residences to awe even the most discerning luxury connoisseur.



THE OPUS

The Opus by Zaha Hadid is a true work of art. Designed completely by starchitect Dame Zaha Hadid. From the incredible exterior, marked vividly by an organic void, to every single detail of the interior, The Opus is a fantastic embodiment of Hadid's signature style. The combined use building is a new and spectacular Dubai landmark, iconic for its legendary design, stunning engineering achievement and prime location.



LANGHAM PLACE RESIDENCES DOWNTOWN DUBAI

The Langham Group have amassed an impressive array of awards for excellence in the field of luxury hospitality, including the award for the World's Most Popular Luxury Hotel Brands, in 2015.

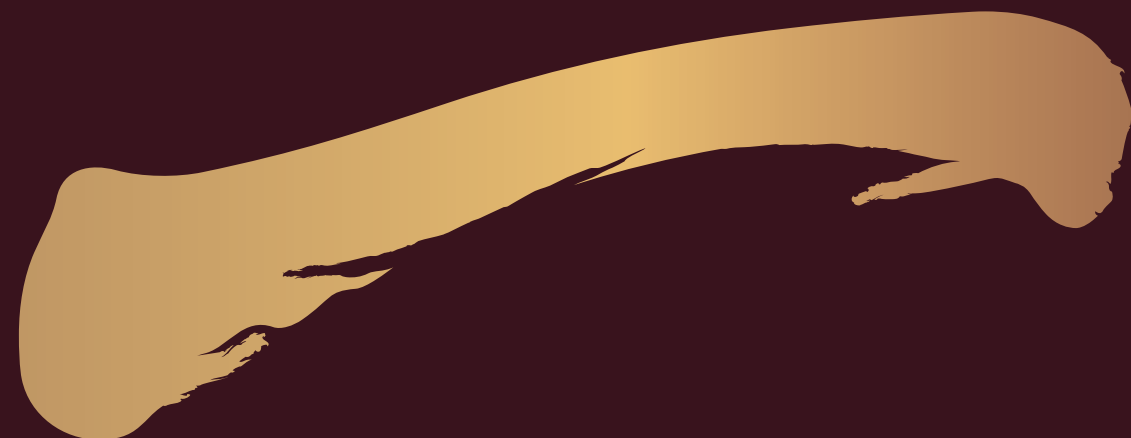
Omniyat, Dubai's most prestigious and respected developer has strategically partnered with this eminent international hotel operator to add Langham Place Downtown Dubai to its portfolio of trophy assets a modern embodiment of the immaculate Langham style and tradition. The 173 hotel rooms and 257 fully-serviced five star residences; ranging from deluxe to one, two and three bedroom suites, and duplex penthouses is currently under construction.



THE STERLING

Made for globetrotting connoisseurs, The Sterling is close to the best that Dubai has to offer. It is less than 7 kilometres away from the Dubai International Financial Centre (DIFC), 11 kilometres away from the Trade Centre, 10 minutes away from the upcoming Dubai Design District and just a couple of minutes away from The Dubai Mall.

It comprises two towers – The East House and The West House – and offers fantastic views of Burj Khalifa, Mohammed Bin Rashid City and The Creek. Take your pick from a wide array of elegant penthouses, bedroom residences and exclusive townhouses.



OMNIYAT[®]