



DUBAI HILLS  
ESTATE

---

**GOLFWILLE**

FLOOR PLANS

**EMAAR**

# DUBAI HILLS ESTATE

## GOLFOVILLE

### BLOCK A | 1 BEDROOM

#### UNIT 6 | LEVEL 1, 2 - 7, 8 - 13

|              |               |             |
|--------------|---------------|-------------|
| SUITE AREA   | 476.63 Sq.ft. | 44.28 Sq.m. |
| BALCONY AREA | 28.09 Sq.ft.  | 2.61 Sq.m.  |
| TOTAL AREA   | 504.72 Sq.ft. | 46.89 Sq.m. |

#### UNIT 7, 8, 9 | LEVEL 1, 2 - 7, 8 - 13

|              |               |              |
|--------------|---------------|--------------|
| SUITE AREA   | 472.75 Sq.ft. | 43.92 Sq.m.  |
| BALCONY AREA | 32.72 Sq.ft.  | 3.04 Sq.m.   |
| TOTAL AREA   | 505.47 Sq.m.  | 46.96 Sq.ft. |

#### UNIT 10 | LEVEL 1, 2 - 7, 8 - 13

|              |               |             |
|--------------|---------------|-------------|
| SUITE AREA   | 472.43 Sq.ft. | 43.89 Sq.m. |
| BALCONY AREA | 32.72 Sq.ft.  | 3.04 Sq.m.  |
| TOTAL AREA   | 505.15 Sq.ft. | 46.93 Sq.m. |

#### UNIT 13, 14 | LEVEL 1 UNIT 14, 15, 16, 17 | LEVEL 2 - 7

|              |               |             |
|--------------|---------------|-------------|
| SUITE AREA   | 464.57 Sq.ft. | 43.16 Sq.m. |
| BALCONY AREA | 31.32 Sq.ft.  | 2.91 Sq.m.  |
| TOTAL AREA   | 495.89 Sq.ft. | 46.07 Sq.m. |

#### UNIT 15, 16 | LEVEL 1

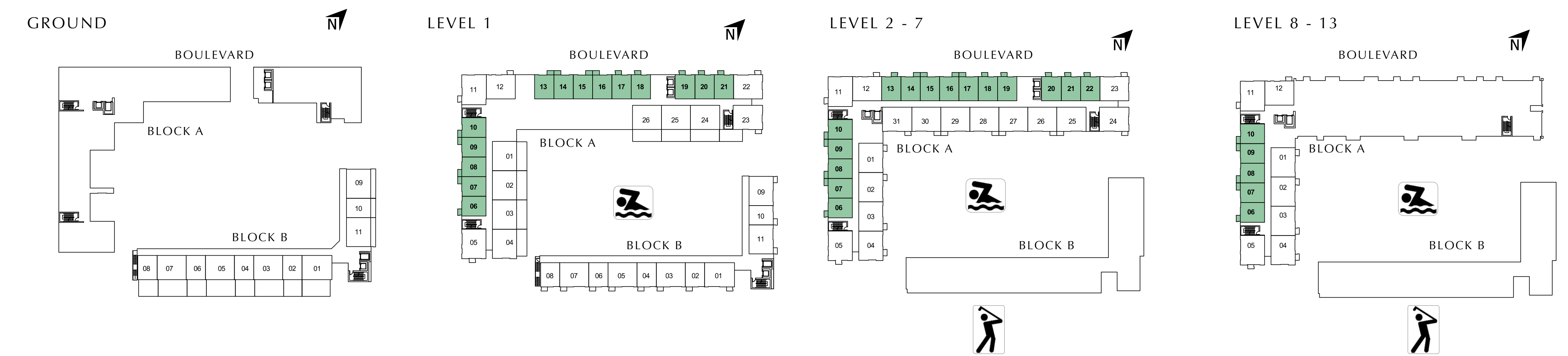
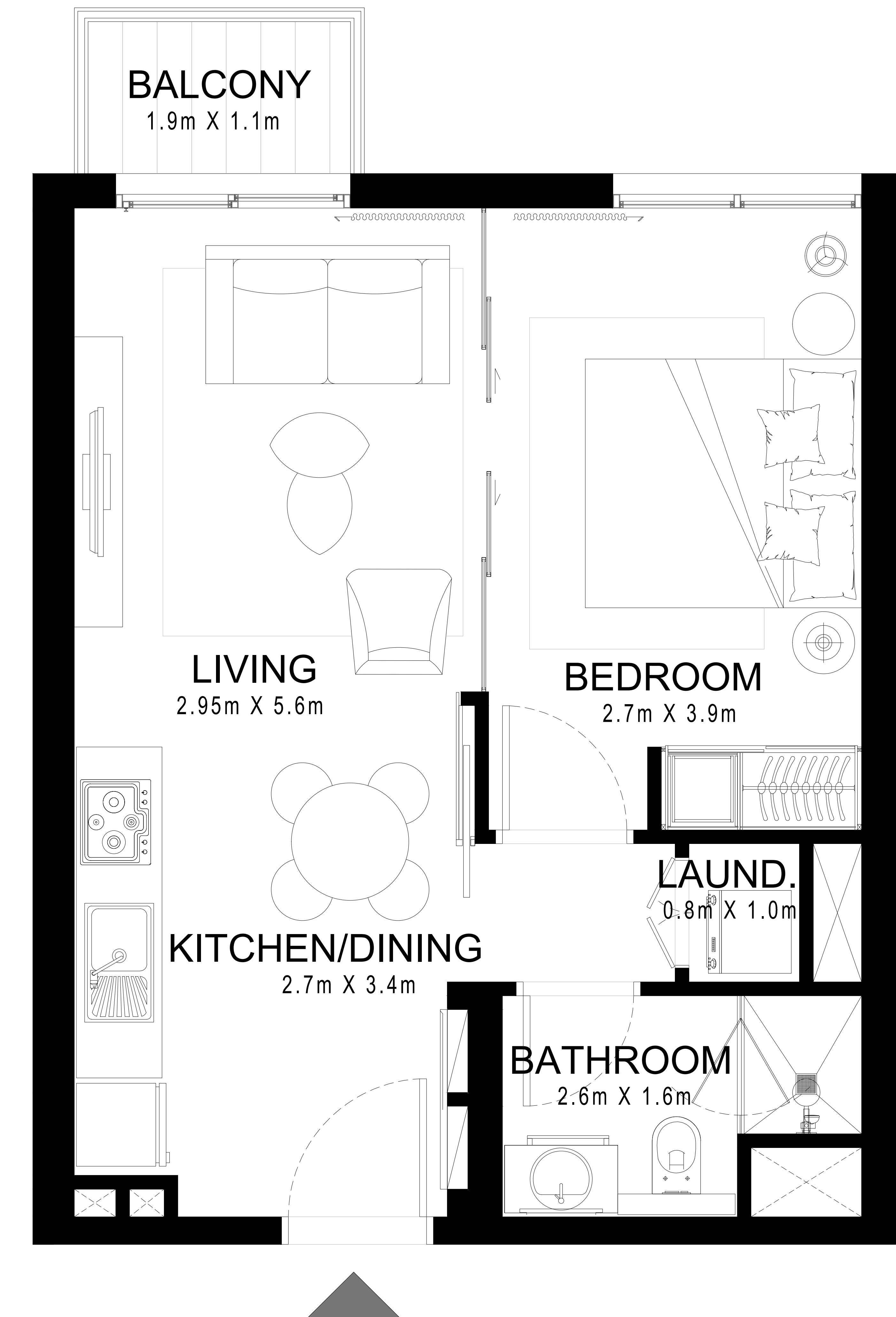
|              |               |             |
|--------------|---------------|-------------|
| SUITE AREA   | 464.89 Sq.ft. | 43.19 Sq.m. |
| BALCONY AREA | 31.32 Sq.ft.  | 2.91 Sq.m.  |
| TOTAL AREA   | 496.21 Sq.ft. | 46.10 Sq.m. |

#### UNIT 17, 18, 20, 21 | LEVEL 1 UNIT 13, 18, 19, 21, 22 | LEVEL 2 - 7

|              |               |             |
|--------------|---------------|-------------|
| SUITE AREA   | 465.86 Sq.ft. | 43.28 Sq.m. |
| BALCONY AREA | 28.09 Sq.ft.  | 2.61 Sq.m.  |
| TOTAL AREA   | 493.95 Sq.ft. | 45.89 Sq.m. |

#### UNIT 19 | LEVEL 1 UNIT 20 | LEVEL 2 - 7

|              |               |             |
|--------------|---------------|-------------|
| SUITE AREA   | 475.98 Sq.ft. | 44.22 Sq.m. |
| BALCONY AREA | 28.09 Sq.ft.  | 2.61 Sq.m.  |
| TOTAL AREA   | 504.07 Sq.ft. | 46.83 Sq.m. |



FLOOR PLAN 1. All dimensions are in imperial and metric, and measured from finish to finish excluding construction tolerances. 2. All materials, dimensions, and drawings are approximate only. 3. Information is subject to change without notice, at developer's absolute discretion. 4. Actual area may vary from the stated area. 5. Drawings not to scale. 6. All images used are for illustrative purposes only and do not represent the actual size, features, specifications, fittings, and furnishings. 7. The developer reserves the right to make revisions / alterations, at it's absolute discretion, without any liability whatsoever.

# DUBAI HILLS ESTATE

## GOLFVILLE

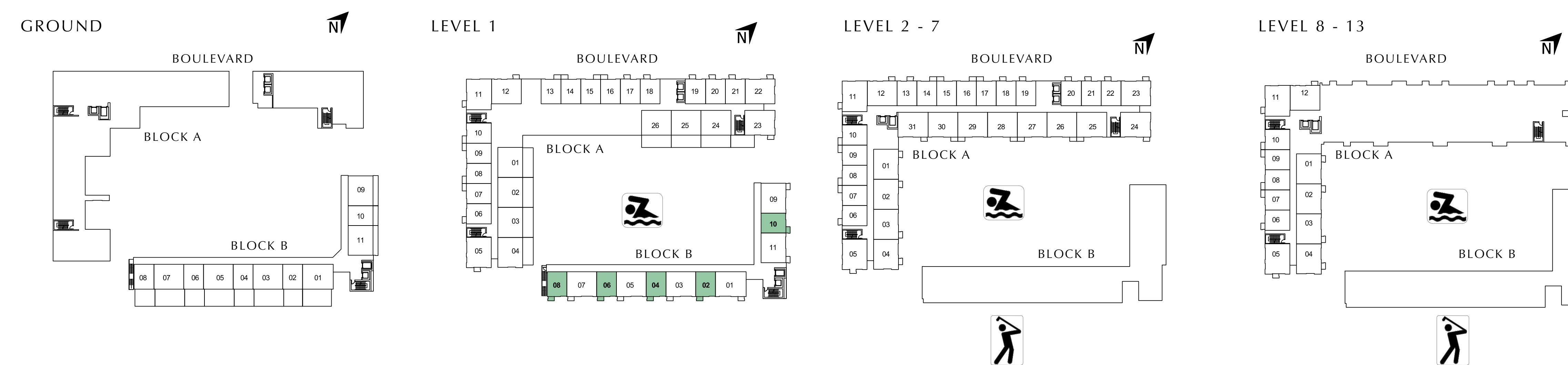
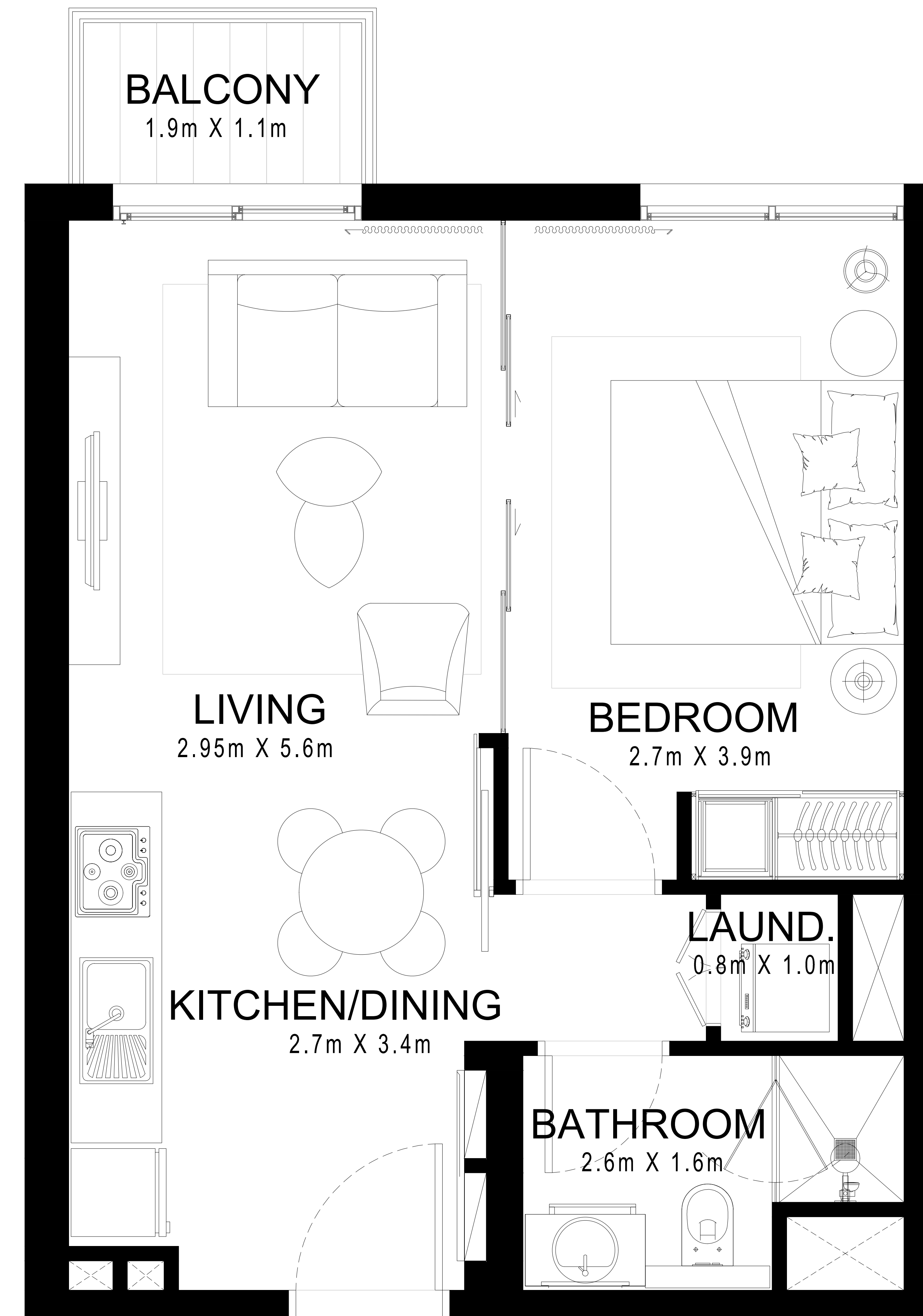
### BLOCK B | 1 BEDROOM

#### UNIT 2, 4, 6, 10 | LEVEL 1

|              |               |             |
|--------------|---------------|-------------|
| SUITE AREA   | 465.97 Sq.ft. | 43.29 Sq.m. |
| BALCONY AREA | 28.09 Sq.ft.  | 2.61 Sq.m.  |
| TOTAL AREA   | 494.06 Sq.ft. | 45.90 Sq.m. |

#### UNIT 8 | LEVEL 1

|              |               |             |
|--------------|---------------|-------------|
| SUITE AREA   | 467.91 Sq.ft. | 43.47 Sq.m. |
| BALCONY AREA | 28.09 Sq.ft.  | 2.61 Sq.m.  |
| TOTAL AREA   | 496.00 Sq.ft. | 46.08 Sq.m. |



FLOOR PLAN 1. All dimensions are in imperial and metric, and measured from finish to finish excluding construction tolerances. 2. All materials, dimensions, and drawings are approximate only. 3. Information is subject to change without notice, at developer's absolute discretion. 4. Actual area may vary from the stated area. 5. Drawings not to scale. 6. All images used are for illustrative purposes only and do not represent the actual size, features, specifications, fittings, and furnishings. 7. The developer reserves the right to make revisions / alterations, at it's absolute discretion, without any liability whatsoever.

# DUBAI HILLS ESTATE

## GOLFOVILLE

### BLOCK B | 1 BEDROOM

#### UNIT 2 | GROUND

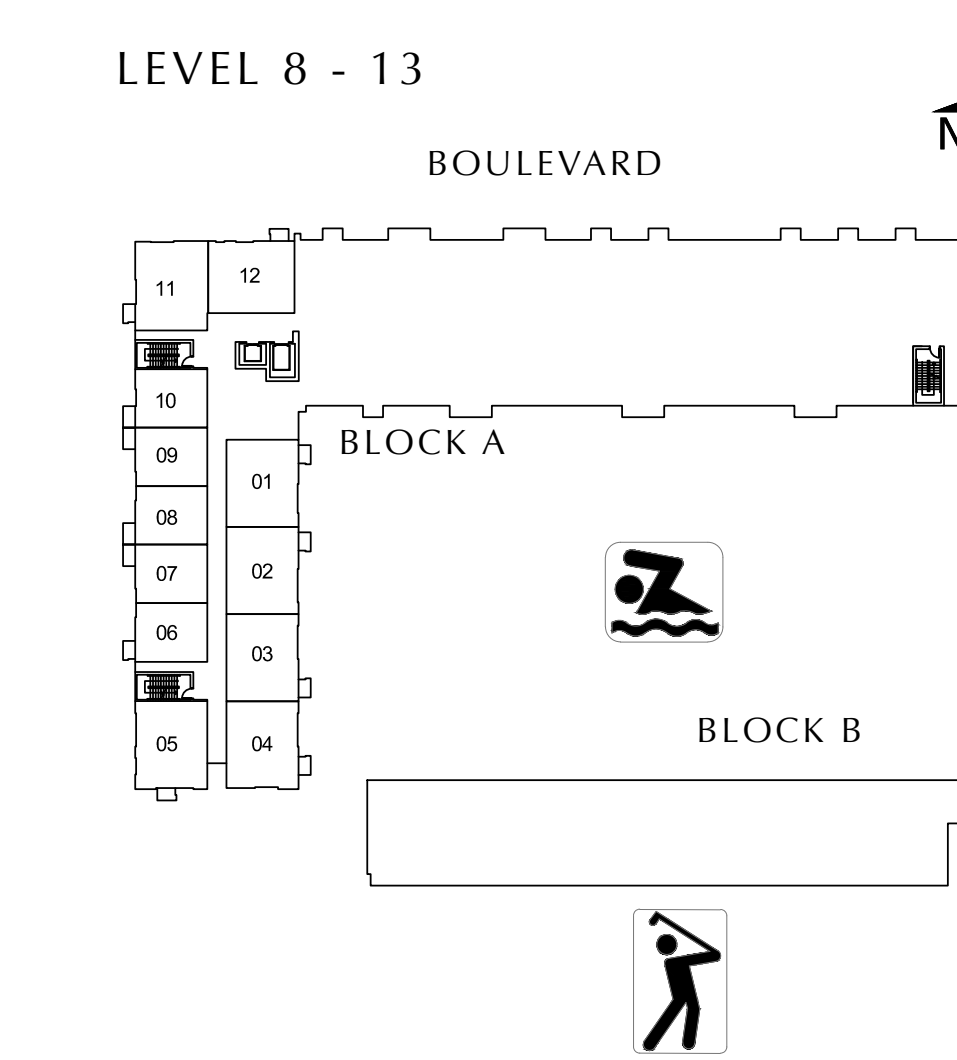
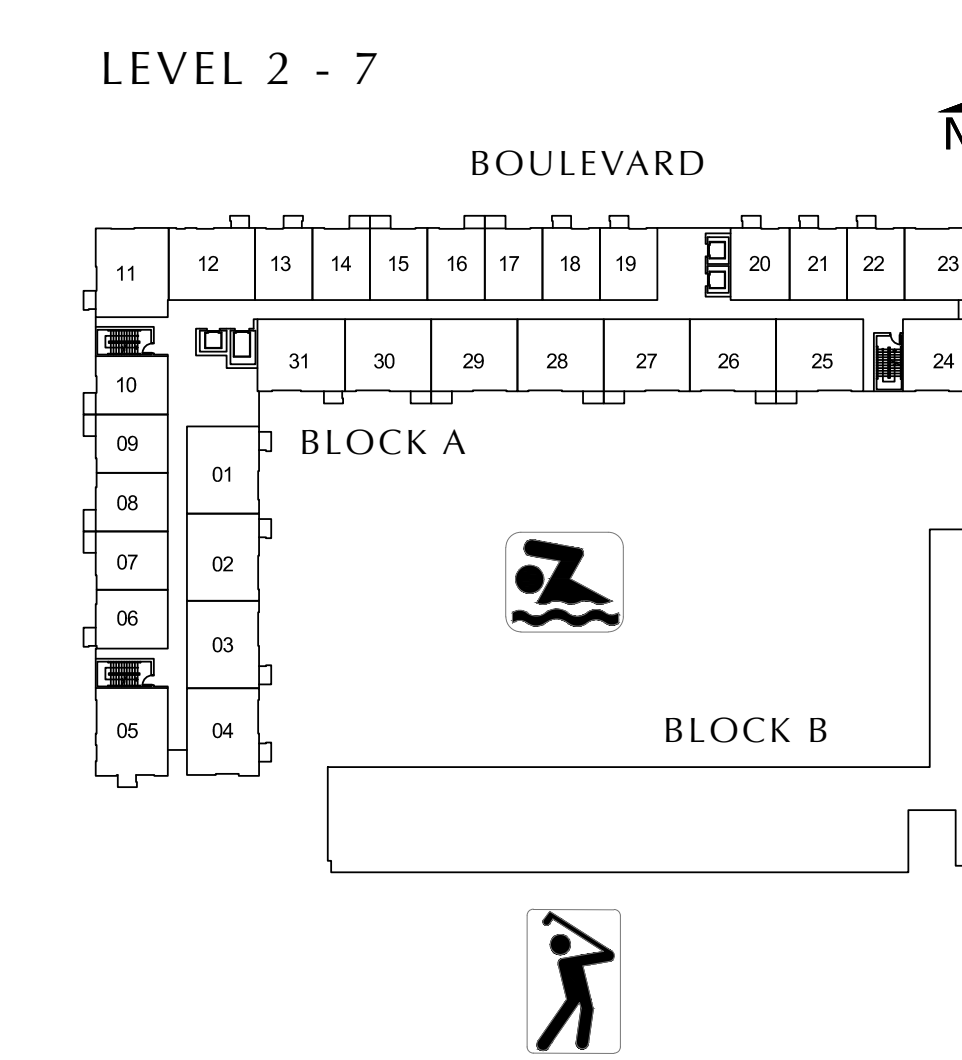
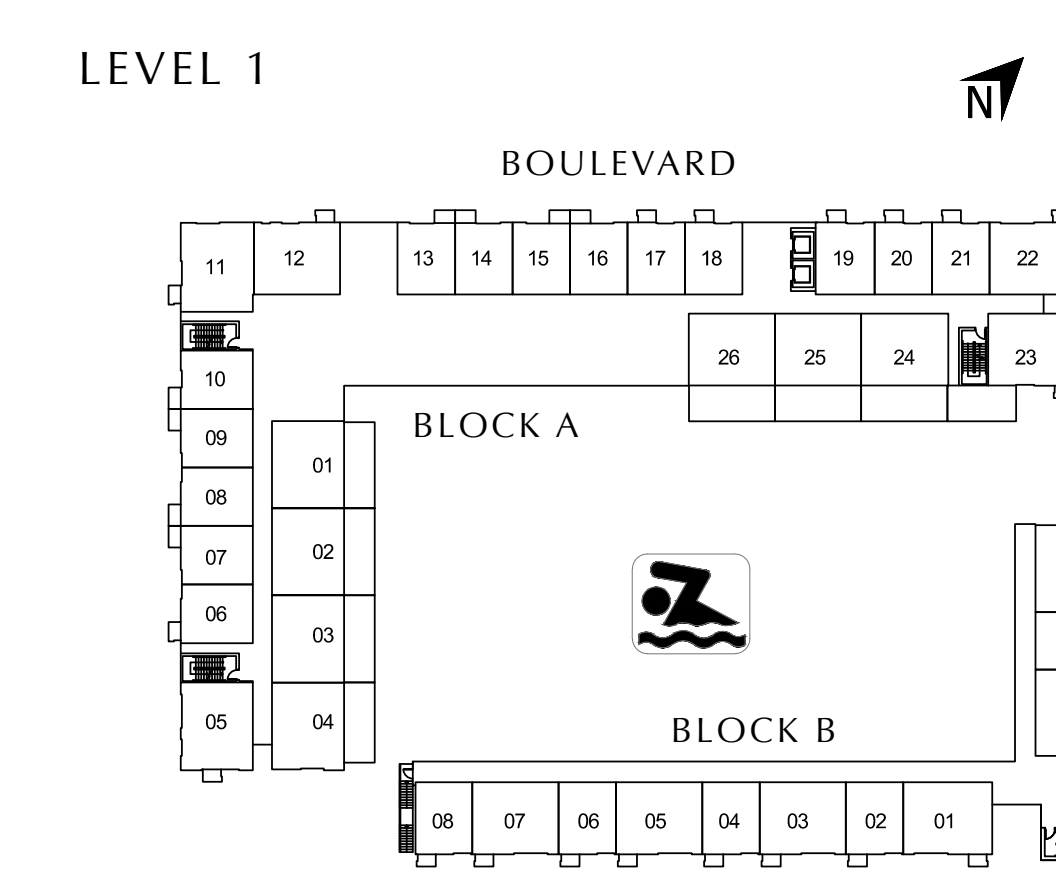
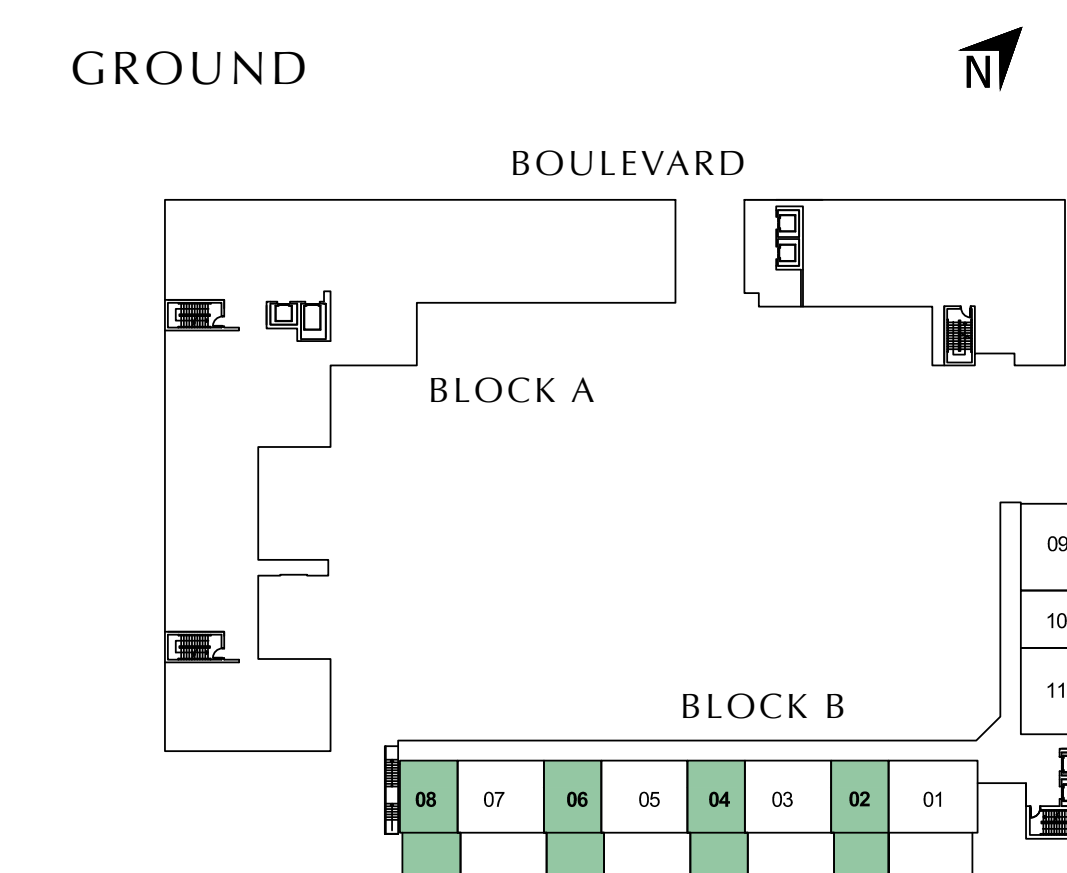
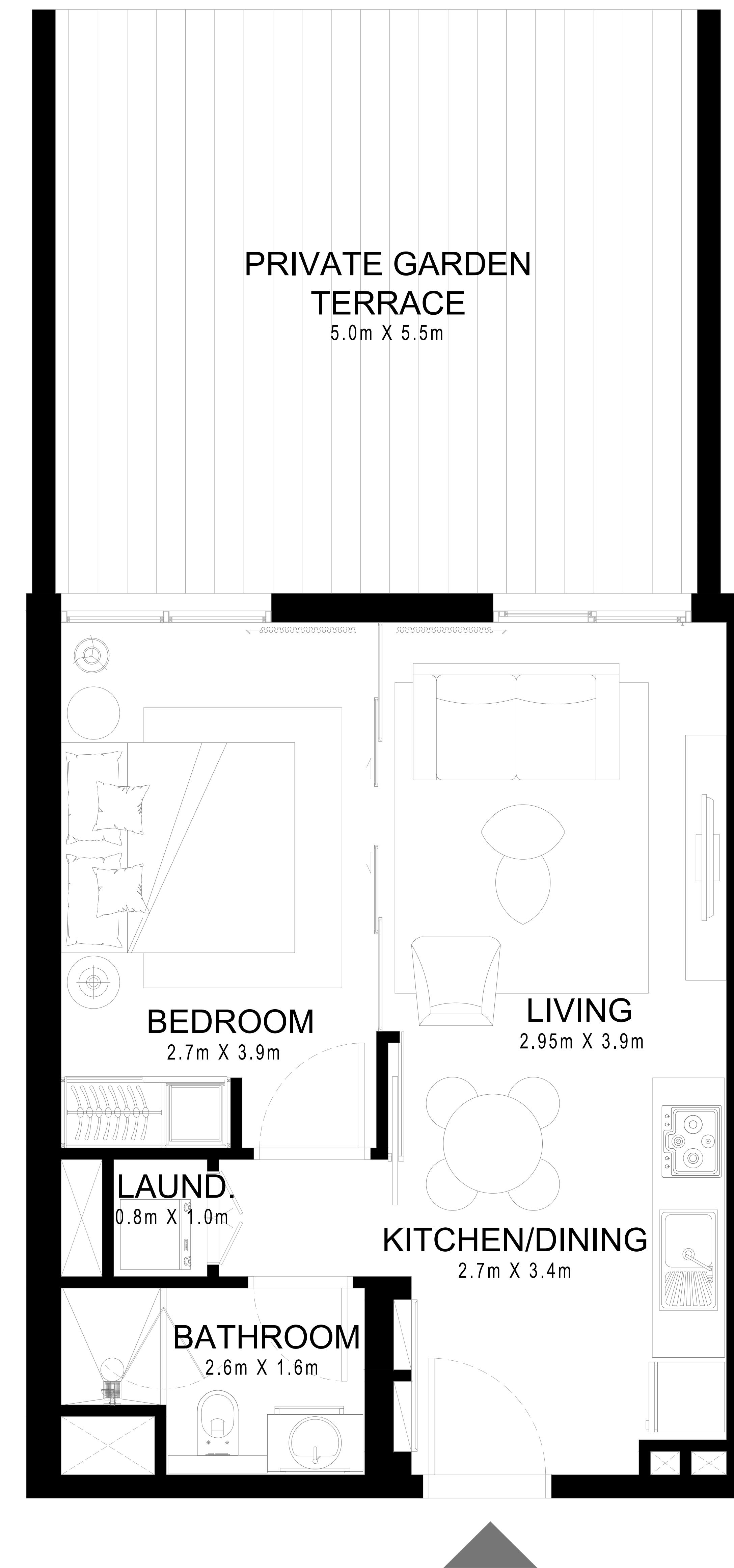
|              |               |             |
|--------------|---------------|-------------|
| SUITE AREA   | 465.97 Sq.ft. | 43.29 Sq.m. |
| BALCONY AREA | 322.38 Sq.ft. | 29.95 Sq.m. |
| TOTAL AREA   | 788.35 Sq.ft. | 73.24 Sq.m. |

#### UNIT 4, 6 | GROUND

|              |               |             |
|--------------|---------------|-------------|
| SUITE AREA   | 465.97 Sq.ft. | 43.29 Sq.m. |
| BALCONY AREA | 339.17 Sq.ft. | 31.51 Sq.m. |
| TOTAL AREA   | 805.14 Sq.ft. | 74.80 Sq.m. |

#### UNIT 8 | GROUND

|              |               |             |
|--------------|---------------|-------------|
| SUITE AREA   | 467.91 Sq.ft. | 43.47 Sq.m. |
| BALCONY AREA | 341.97 Sq.ft. | 31.77 Sq.m. |
| TOTAL AREA   | 809.88 Sq.ft. | 75.24 Sq.m. |



FLOOR PLAN 1. All dimensions are in imperial and metric, and measured from finish to finish excluding construction tolerances. 2. All materials, dimensions, and drawings are approximate only. 3. Information is subject to change without notice, at developer's absolute discretion. 4. Actual area may vary from the stated area. 5. Drawings not to scale. 6. All images used are for illustrative purposes only and do not represent the actual size, features, specifications, fittings, and furnishings. 7. The developer reserves the right to make revisions / alterations, at it's absolute discretion, without any liability whatsoever.

# DUBAI HILLS

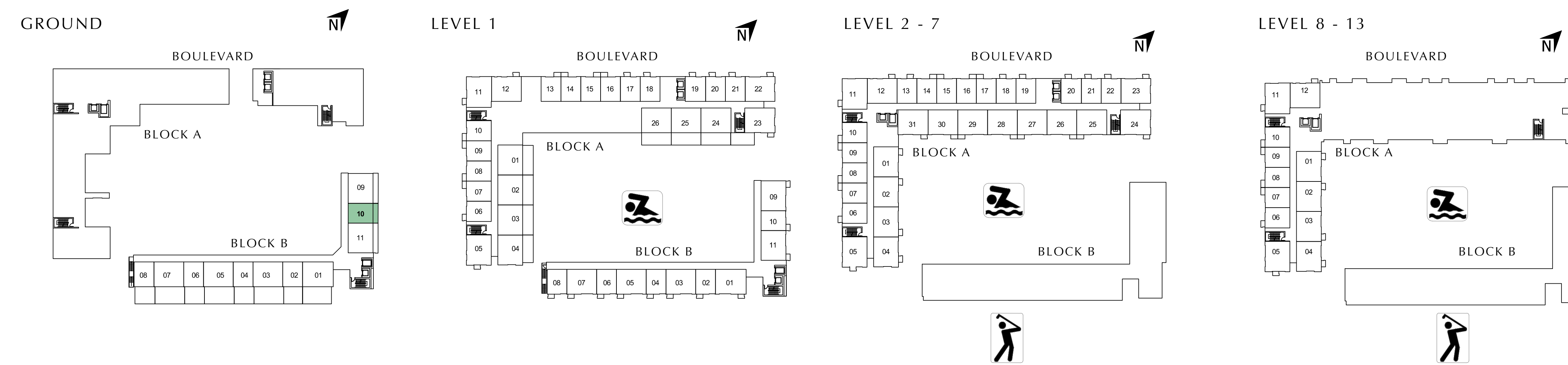
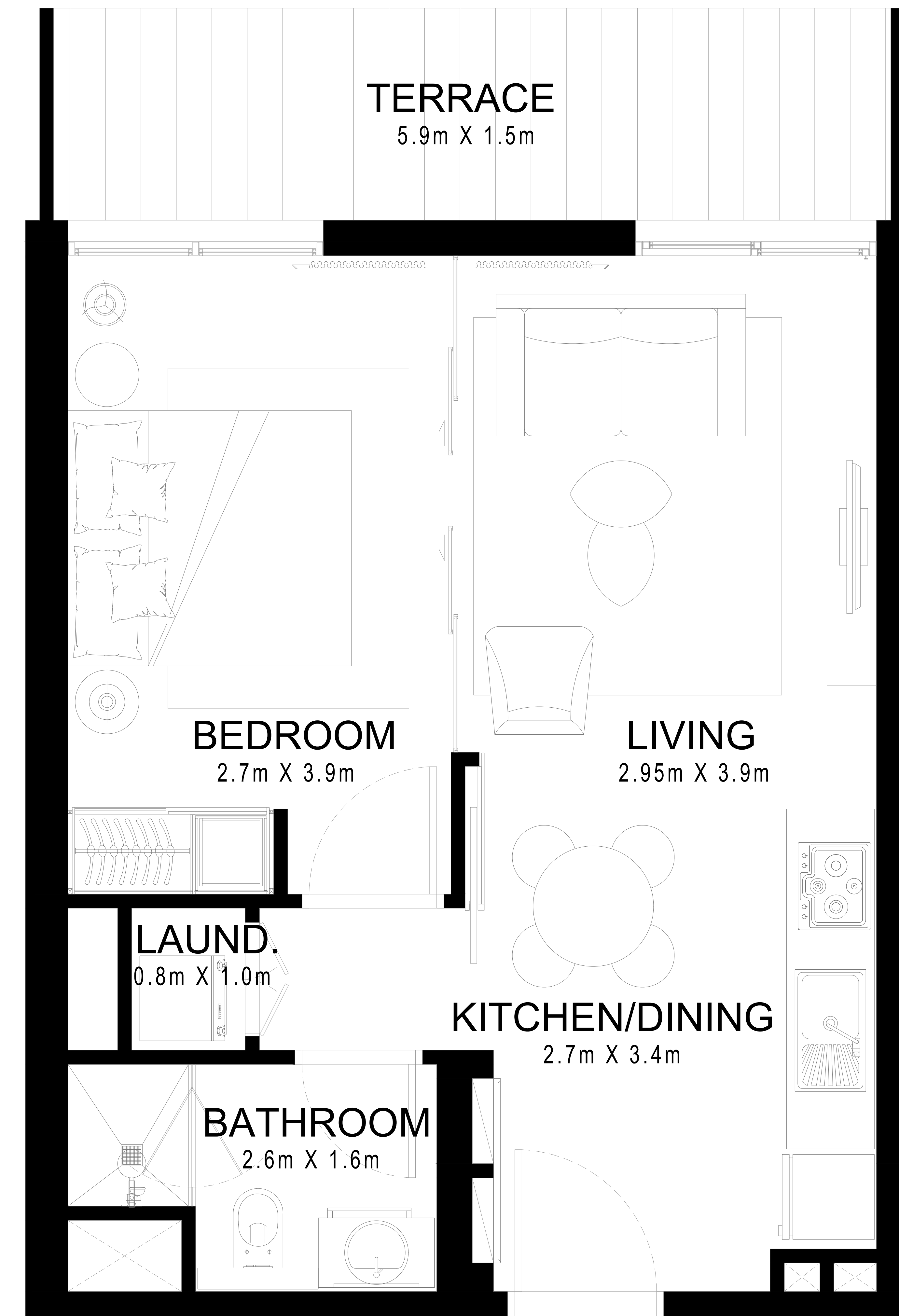
## ESTATE

### GOLFVILLE

### BLOCK B | 1 BEDROOM

#### UNIT 10 | GROUND

|              |               |             |
|--------------|---------------|-------------|
| SUITE AREA   | 465.97 Sq.ft. | 43.29 Sq.m. |
| BALCONY AREA | 103.12 Sq.ft. | 9.58 Sq.m.  |
| TOTAL AREA   | 569.09 Sq.ft. | 52.87 Sq.m. |



FLOOR PLAN 1. All dimensions are in imperial and metric, and measured from finish to finish excluding construction tolerances. 2. All materials, dimensions, and drawings are approximate only. 3. Information is subject to change without notice, at developer's absolute discretion. 4. Actual area may vary from the stated area. 5. Drawings not to scale. 6. All images used are for illustrative purposes only and do not represent the actual size, features, specifications, fittings, and furnishings. 7. The developer reserves the right to make revisions / alterations, at it's absolute discretion, without any liability whatsoever.

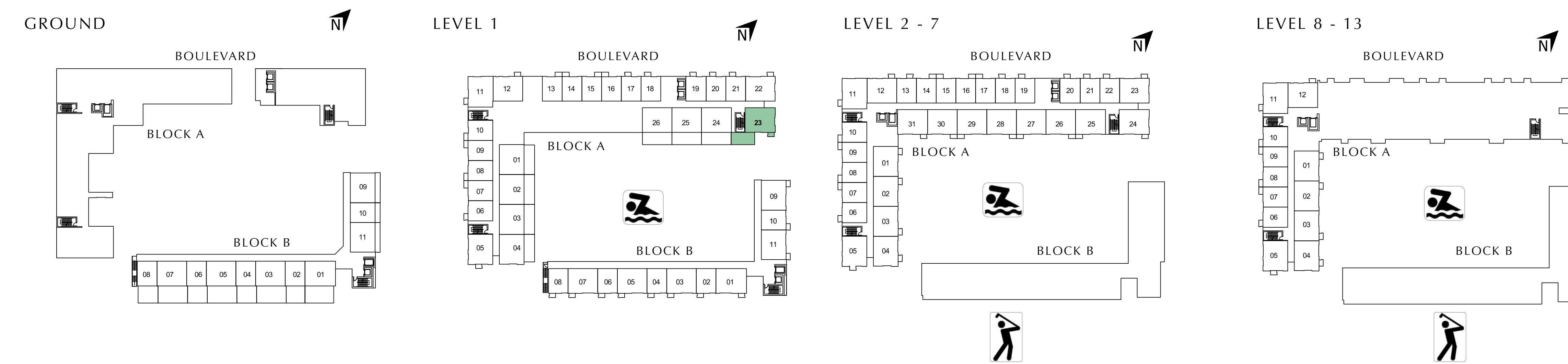
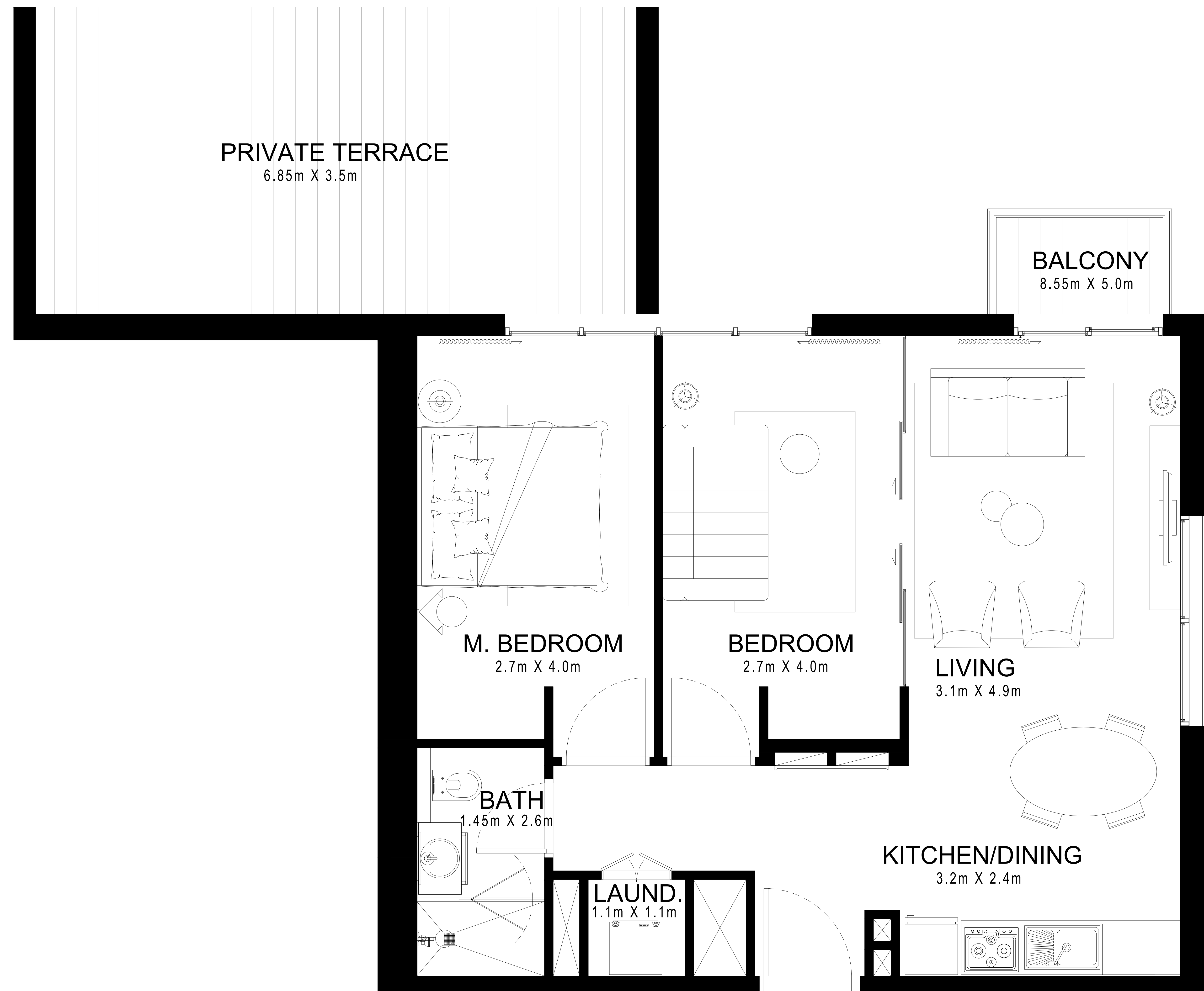
# DUBAI HILLS ESTATE

## GOLFOVILLE

### BLOCK A | 2 BEDROOM

#### UNIT 23 | LEVEL 1

|              |                |             |
|--------------|----------------|-------------|
| SUITE AREA   | 712.57 Sq.ft.  | 66.20 Sq.m. |
| BALCONY AREA | 316.67 Sq.ft.  | 29.42 Sq.m. |
| TOTAL AREA   | 1029.24 Sq.ft. | 95.62 Sq.m. |



FLOOR PLAN 1. All dimensions are in imperial and metric, and measured from finish to finish excluding construction tolerances. 2. All materials, dimensions, and drawings are approximate only. 3. Information is subject to change without notice, at developer's absolute discretion. 4. Actual area may vary from the stated area. 5. Drawings not to scale. 6. All images used are for illustrative purposes only and do not represent the actual size, features, specifications, fittings, and furnishings. 7. The developer reserves the right to make revisions / alterations, at it's absolute discretion, without any liability whatsoever.

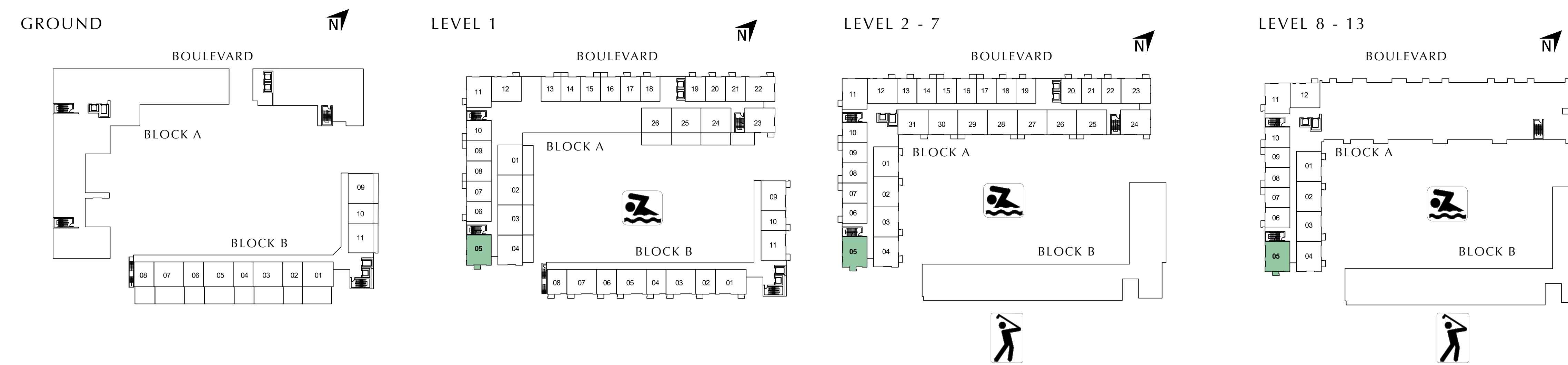
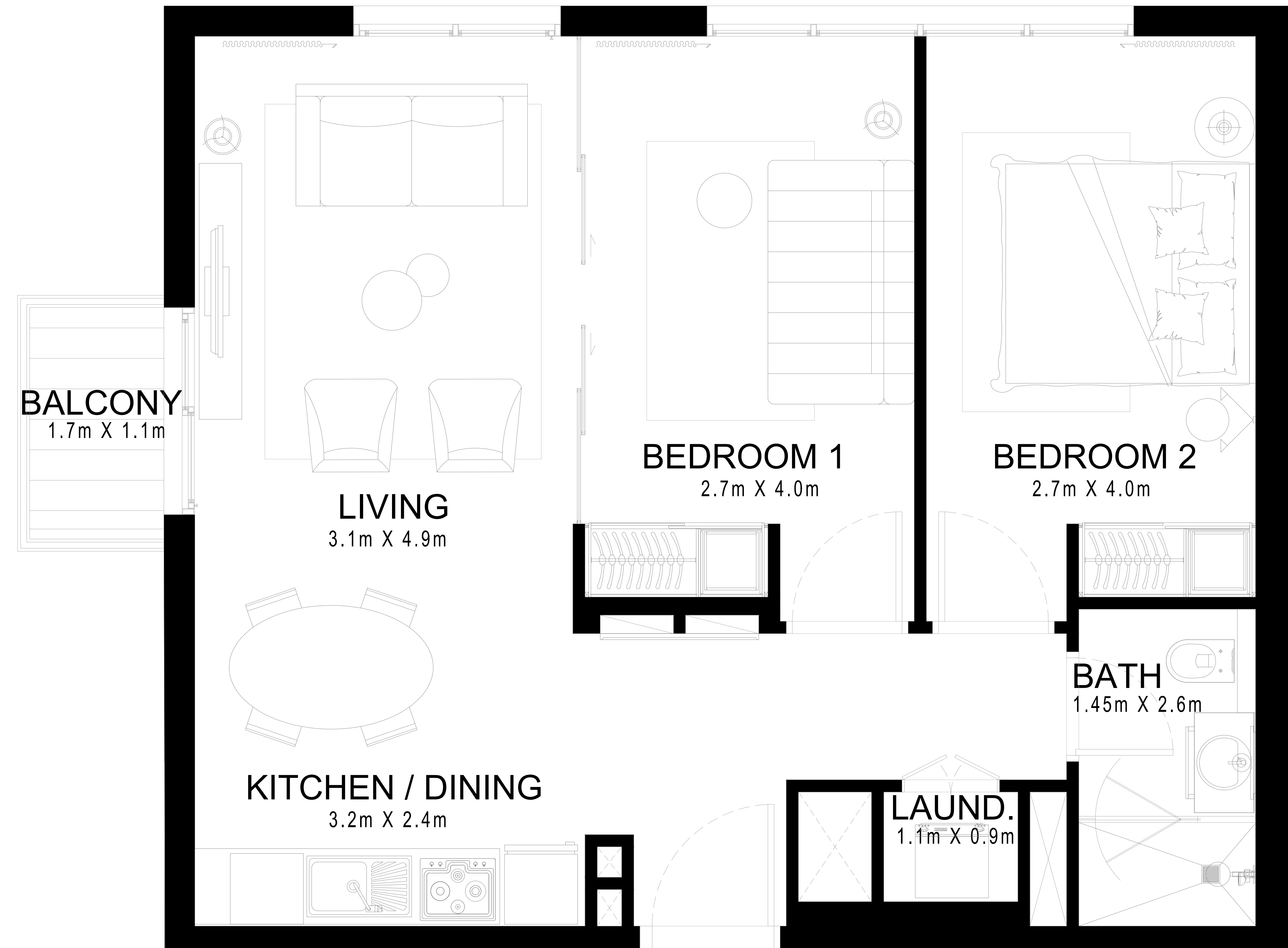
# DUBAI HILLS ESTATE

## GOLFSVILLE

### BLOCK A | 2 BEDROOM

UNIT 5 | LEVEL 1, 2 - 7, 8 - 13

|              |               |             |
|--------------|---------------|-------------|
| SUITE AREA   | 712.36 Sq.ft. | 66.18 Sq.m. |
| BALCONY AREA | 28.09 Sq.ft.  | 2.61 Sq.m.  |
| TOTAL AREA   | 740.45 Sq.ft. | 68.79 Sq.m. |



FLOOR PLAN 1. All dimensions are in imperial and metric, and measured from finish to finish excluding construction tolerances. 2. All materials, dimensions, and drawings are approximate only. 3. Information is subject to change without notice, at developer's absolute discretion. 4. Actual area may vary from the stated area. 5. Drawings not to scale. 6. All images used are for illustrative purposes only and do not represent the actual size, features, specifications, fittings, and furnishings. 7. The developer reserves the right to make revisions / alterations, at it's absolute discretion, without any liability whatsoever.

# DUBAI HILLS ESTATE

## GOLFOVILLE

### BLOCK A | 2 BEDROOM

#### UNIT 1 | LEVEL 2 - 7, 8 - 13

|              |               |             |
|--------------|---------------|-------------|
| SUITE AREA   | 715.05 Sq.ft. | 66.43 Sq.m. |
| BALCONY AREA | 28.09 Sq.ft.  | 2.61 Sq.m.  |
| TOTAL AREA   | 743.14 Sq.ft. | 69.04 Sq.m. |

#### UNIT 2 | LEVEL 2 - 7, 8 - 13

|              |               |             |
|--------------|---------------|-------------|
| SUITE AREA   | 714.51 Sq.ft. | 66.38 Sq.m. |
| BALCONY AREA | 28.09 Sq.ft.  | 2.61 Sq.m.  |
| TOTAL AREA   | 742.60 Sq.ft. | 68.99 Sq.m. |

#### UNIT 3 | LEVEL 2 - 7, 8 - 13

|              |               |             |
|--------------|---------------|-------------|
| SUITE AREA   | 716.55 Sq.ft. | 66.57 Sq.m. |
| BALCONY AREA | 28.09 Sq.ft.  | 2.61 Sq.m.  |
| TOTAL AREA   | 744.64 Sq.ft. | 69.18 Sq.m. |

#### UNIT 4 | LEVEL 2 - 7, 8 - 13

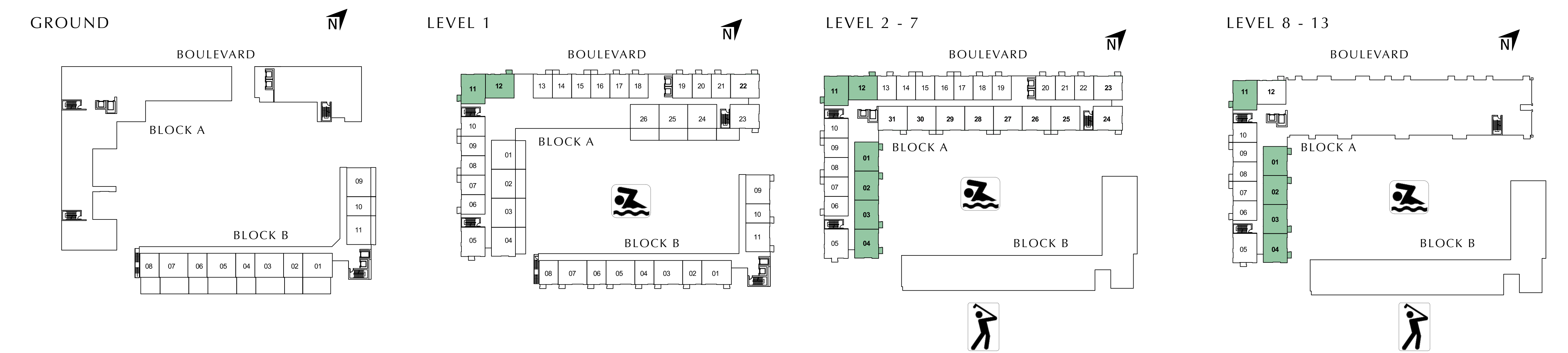
|              |               |             |
|--------------|---------------|-------------|
| SUITE AREA   | 709.66 Sq.ft. | 65.93 Sq.m. |
| BALCONY AREA | 28.09 Sq.ft.  | 2.61 Sq.m.  |
| TOTAL AREA   | 737.75 Sq.ft. | 68.54 Sq.m. |

#### UNIT 11 | LEVEL 1, 2 - 7, 8 - 13

|              |               |             |
|--------------|---------------|-------------|
| SUITE AREA   | 737.33 Sq.ft. | 68.50 Sq.m. |
| BALCONY AREA | 28.09 Sq.ft.  | 2.61 Sq.m.  |
| TOTAL AREA   | 765.42 Sq.ft. | 71.11 Sq.m. |

#### UNIT 12 | LEVEL 1, 2 - 7

|              |               |             |
|--------------|---------------|-------------|
| SUITE AREA   | 707.30 Sq.ft. | 65.71 Sq.m. |
| BALCONY AREA | 28.09 Sq.ft.  | 2.61 Sq.m.  |
| TOTAL AREA   | 735.39 Sq.ft. | 68.32 Sq.m. |



FLOOR PLAN 1. All dimensions are in imperial and metric, and measured from finish to finish excluding construction tolerances. 2. All materials, dimensions, and drawings are approximate only. 3. Information is subject to change without notice, at developer's absolute discretion. 4. Actual area may vary from the stated area. 5. Drawings not to scale. 6. All images used are for illustrative purposes only and do not represent the actual size, features, specifications, fittings, and furnishings. 7. The developer reserves the right to make revisions / alterations, at it's absolute discretion, without any liability whatsoever.



# DUBAI HILLS ESTATE

## GOLFOVILLE

### BLOCK A | 2 BEDROOM

#### UNIT 12 | LEVEL 8 - 13

|              |               |             |
|--------------|---------------|-------------|
| SUITE AREA   | 719.46 Sq.ft. | 66.84 Sq.m. |
| BALCONY AREA | 28.09 Sq.ft.  | 2.61 Sq.m.  |
| TOTAL AREA   | 747.55 Sq.ft. | 69.45 Sq.m. |

#### UNIT 22 | LEVEL 1 UNIT 23 | LEVEL 2 - 7

|              |               |             |
|--------------|---------------|-------------|
| SUITE AREA   | 702.35 Sq.ft. | 65.25 Sq.m. |
| BALCONY AREA | 28.09 Sq.ft.  | 2.61 Sq.m.  |
| TOTAL AREA   | 730.44 Sq.ft. | 67.86 Sq.m. |

#### UNIT 24 | LEVEL 2 - 7

|              |               |             |
|--------------|---------------|-------------|
| SUITE AREA   | 712.57 Sq.ft. | 66.20 Sq.m. |
| BALCONY AREA | 28.09 Sq.ft.  | 2.61 Sq.m.  |
| TOTAL AREA   | 740.66 Sq.ft. | 68.81 Sq.m. |

#### UNIT 25 | LEVEL 2 - 7

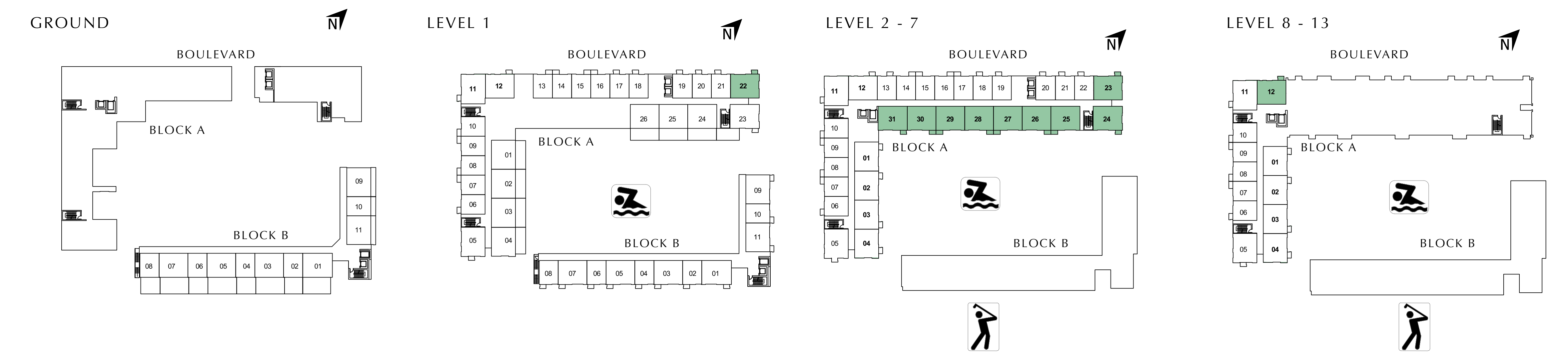
|              |               |             |
|--------------|---------------|-------------|
| SUITE AREA   | 714.51 Sq.ft. | 66.38 Sq.m. |
| BALCONY AREA | 30.89 Sq.ft.  | 2.87 Sq.m.  |
| TOTAL AREA   | 745.40 Sq.ft. | 69.25 Sq.m. |

#### UNIT 26, 27, 28, 29, 30 | LEVEL 2 - 7

|              |               |             |
|--------------|---------------|-------------|
| SUITE AREA   | 706.44 Sq.ft. | 65.63 Sq.m. |
| BALCONY AREA | 30.89 Sq.ft.  | 2.87 Sq.m.  |
| TOTAL AREA   | 737.33 Sq.ft. | 68.50 Sq.m. |

#### UNIT 31 | LEVEL 2 - 7

|              |               |             |
|--------------|---------------|-------------|
| SUITE AREA   | 714.19 Sq.ft. | 66.35 Sq.m. |
| BALCONY AREA | 28.09 Sq.ft.  | 2.61 Sq.m.  |
| TOTAL AREA   | 742.28 Sq.ft. | 68.96 Sq.m. |



FLOOR PLAN 1. All dimensions are in imperial and metric, and measured from finish to finish excluding construction tolerances. 2. All materials, dimensions, and drawings are approximate only. 3. Information is subject to change without notice, at developer's absolute discretion. 4. Actual area may vary from the stated area. 5. Drawings not to scale. 6. All images used are for illustrative purposes only and do not represent the actual size, features, specifications, fittings, and furnishings. 7. The developer reserves the right to make revisions / alterations, at it's absolute discretion, without any liability whatsoever.

# DUBAI HILLS ESTATE

## GOLFOVILLE

### BLOCK A | 2 BEDROOM

#### UNIT 1 | LEVEL 1

|              |                |             |
|--------------|----------------|-------------|
| SUITE AREA   | 715.05 Sq.ft.  | 66.43 Sq.m. |
| BALCONY AREA | 313.77 Sq.ft.  | 29.15 Sq.m. |
| TOTAL AREA   | 1028.82 Sq.ft. | 95.58 Sq.m. |

#### UNIT 2 | LEVEL 1

|              |                |             |
|--------------|----------------|-------------|
| SUITE AREA   | 714.51 Sq.ft.  | 66.38 Sq.m. |
| BALCONY AREA | 318.61 Sq.ft.  | 29.60 Sq.m. |
| TOTAL AREA   | 1033.12 Sq.ft. | 95.98 Sq.m. |

#### UNIT 3 | LEVEL 1

|              |                |             |
|--------------|----------------|-------------|
| SUITE AREA   | 716.55 Sq.ft.  | 66.57 Sq.m. |
| BALCONY AREA | 318.61 Sq.ft.  | 29.60 Sq.m. |
| TOTAL AREA   | 1035.16 Sq.ft. | 96.17 Sq.m. |

#### UNIT 4 | LEVEL 1

|              |                |             |
|--------------|----------------|-------------|
| SUITE AREA   | 709.66 Sq.ft.  | 65.93 Sq.m. |
| BALCONY AREA | 293.64 Sq.ft.  | 27.28 Sq.m. |
| TOTAL AREA   | 1003.30 Sq.ft. | 93.21 Sq.m. |

#### UNIT 24 | LEVEL 1

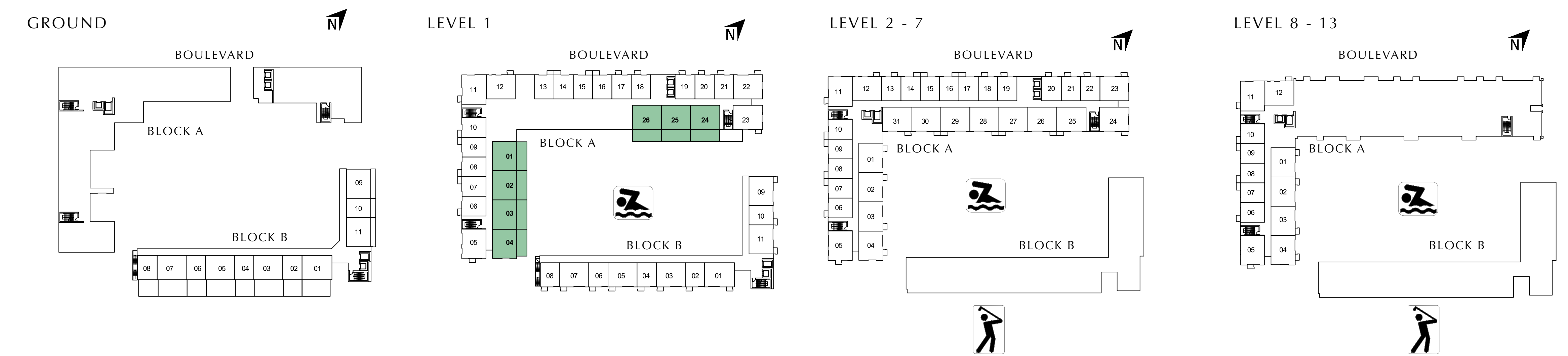
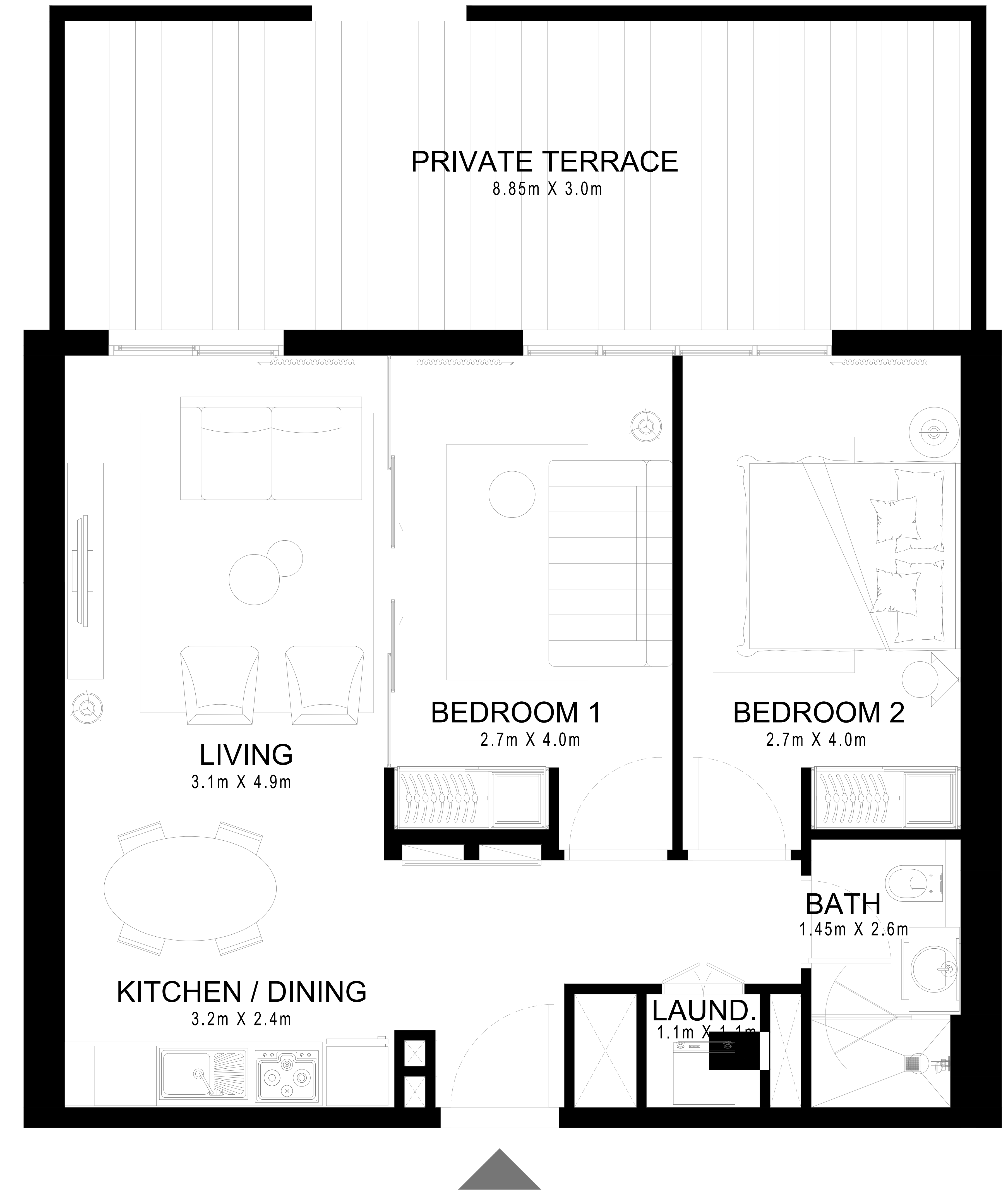
|              |                |              |
|--------------|----------------|--------------|
| SUITE AREA   | 714.51 Sq.ft.  | 66.38 Sq.m.  |
| BALCONY AREA | 363.60 Sq.ft.  | 33.78 Sq.m.  |
| TOTAL AREA   | 1078.11 Sq.ft. | 100.16 Sq.m. |

#### UNIT 25 | LEVEL 1

|              |                |             |
|--------------|----------------|-------------|
| SUITE AREA   | 706.44 Sq.ft.  | 65.63 Sq.m. |
| BALCONY AREA | 363.60 Sq.ft.  | 33.78 Sq.m. |
| TOTAL AREA   | 1070.04 Sq.ft. | 99.41 Sq.m. |

#### UNIT 26 | LEVEL 1

|              |                |             |
|--------------|----------------|-------------|
| SUITE AREA   | 706.44 Sq.ft.  | 65.63 Sq.m. |
| BALCONY AREA | 362.53 Sq.ft.  | 33.68 Sq.m. |
| TOTAL AREA   | 1068.97 Sq.ft. | 99.31 Sq.m. |



FLOOR PLAN 1. All dimensions are in imperial and metric, and measured from finish to finish excluding construction tolerances. 2. All materials, dimensions, and drawings are approximate only. 3. Information is subject to change without notice, at developer's absolute discretion. 4. Actual area may vary from the stated area. 5. Drawings not to scale. 6. All images used are for illustrative purposes only and do not represent the actual size, features, specifications, fittings, and furnishings. 7. The developer reserves the right to make revisions / alterations, at its absolute discretion, without any liability whatsoever.

# DUBAI HILLS ESTATE

## GOLFOVILLE

### BLOCK B | 2 BEDROOM

#### UNIT 1 | LEVEL 1

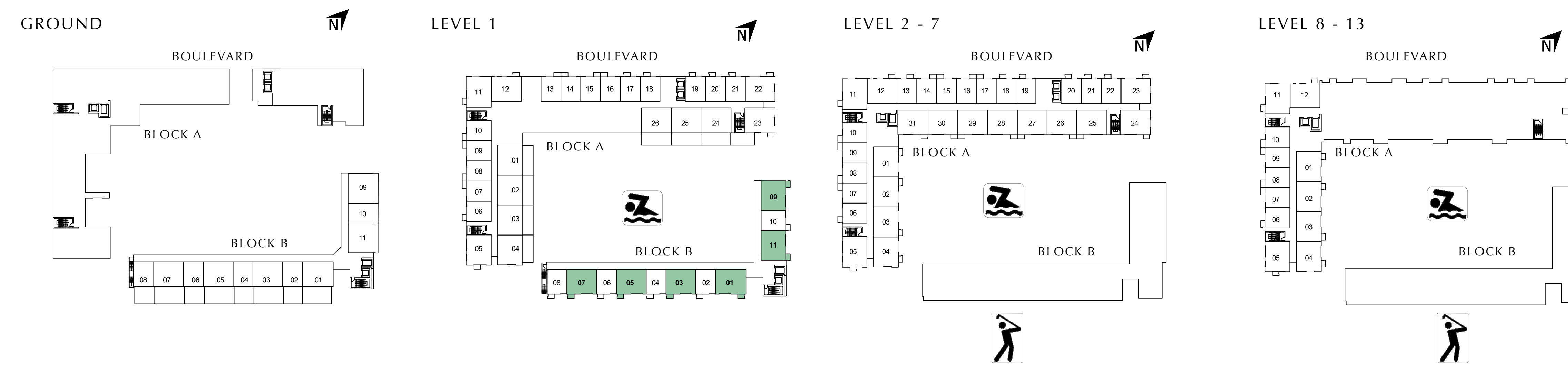
|              |               |             |
|--------------|---------------|-------------|
| SUITE AREA   | 728.72 Sq.ft. | 67.70 Sq.m. |
| BALCONY AREA | 28.09 Sq.ft.  | 2.61 Sq.m.  |
| TOTAL AREA   | 756.81 Sq.ft. | 70.31 Sq.m. |

#### UNIT 3, 5, 7, 11 | LEVEL 1

|              |               |             |
|--------------|---------------|-------------|
| SUITE AREA   | 706.44 Sq.ft. | 65.63 Sq.m. |
| BALCONY AREA | 28.09 Sq.ft.  | 2.61 Sq.m.  |
| TOTAL AREA   | 734.53 Sq.ft. | 68.24 Sq.m. |

#### UNIT 9 | LEVEL 1

|              |               |             |
|--------------|---------------|-------------|
| SUITE AREA   | 712.57 Sq.ft. | 66.20 Sq.m. |
| BALCONY AREA | 28.09 Sq.ft.  | 2.61 Sq.m.  |
| TOTAL AREA   | 740.66 Sq.ft. | 68.81 Sq.m. |



FLOOR PLAN 1. All dimensions are in imperial and metric, and measured from finish to finish excluding construction tolerances. 2. All materials, dimensions, and drawings are approximate only. 3. Information is subject to change without notice, at developer's absolute discretion. 4. Actual area may vary from the stated area. 5. Drawings not to scale. 6. All images used are for illustrative purposes only and do not represent the actual size, features, specifications, fittings, and furnishings. 7. The developer reserves the right to make revisions / alterations, at it's absolute discretion, without any liability whatsoever.

# DUBAI HILLS ESTATE

## GOLFOVILLE

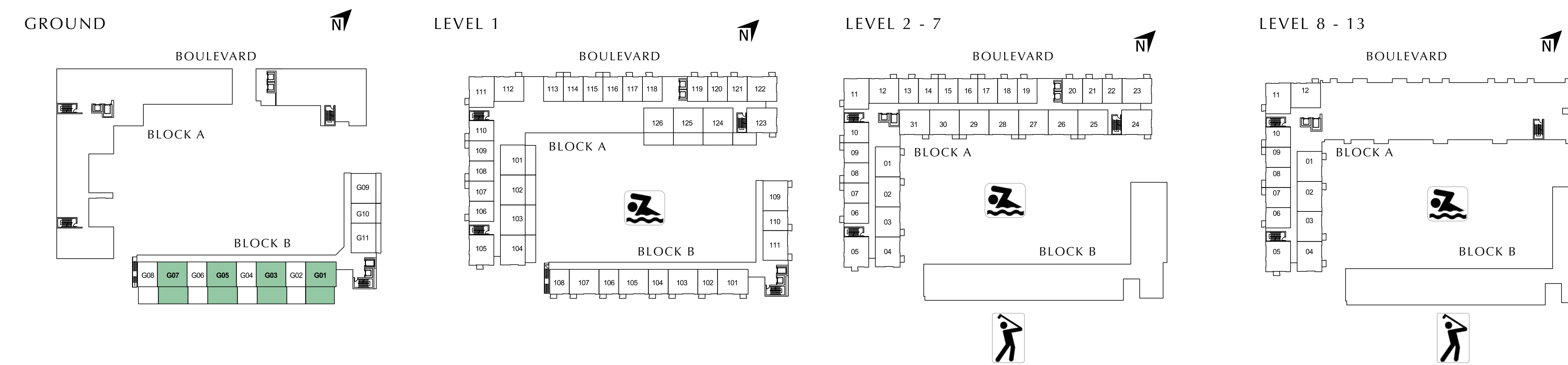
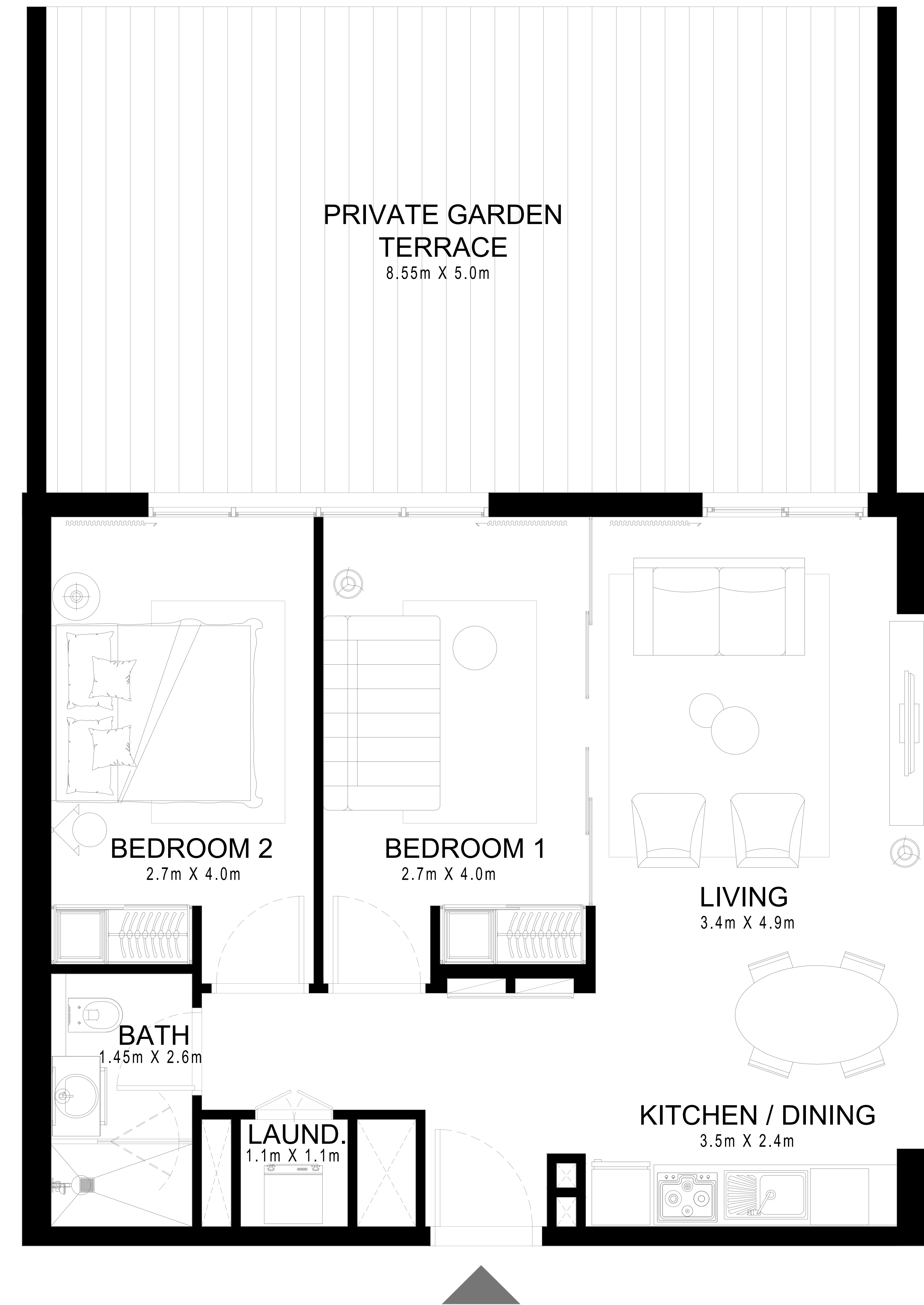
### BLOCK B | 2 BEDROOM

#### UNIT 1 | GROUND

|              |                |              |
|--------------|----------------|--------------|
| SUITE AREA   | 728.72 Sq.ft.  | 67.70 Sq.m.  |
| BALCONY AREA | 494.92 Sq.ft.  | 45.98 Sq.m.  |
| TOTAL AREA   | 1223.64 Sq.ft. | 113.68 Sq.m. |

#### UNIT 3, 5, 7 | GROUND

|              |                |              |
|--------------|----------------|--------------|
| SUITE AREA   | 706.44 Sq.ft.  | 65.63 Sq.m.  |
| BALCONY AREA | 508.92 Sq.ft.  | 47.28 Sq.m.  |
| TOTAL AREA   | 1215.36 Sq.ft. | 112.91 Sq.m. |



FLOOR PLAN 1. All dimensions are in imperial and metric, and measured from finish to finish excluding construction tolerances. 2. All materials, dimensions, and drawings are approximate only. 3. Information is subject to change without notice, at developer's absolute discretion. 4. Actual area may vary from the stated area. 5. Drawings not to scale. 6. All images used are for illustrative purposes only and do not represent the actual size, features, specifications, fittings, and furnishings. 7. The developer reserves the right to make revisions / alterations, at it's absolute discretion, without any liability whatsoever.

# DUBAI HILLS ESTATE

## GOLFOVILLE

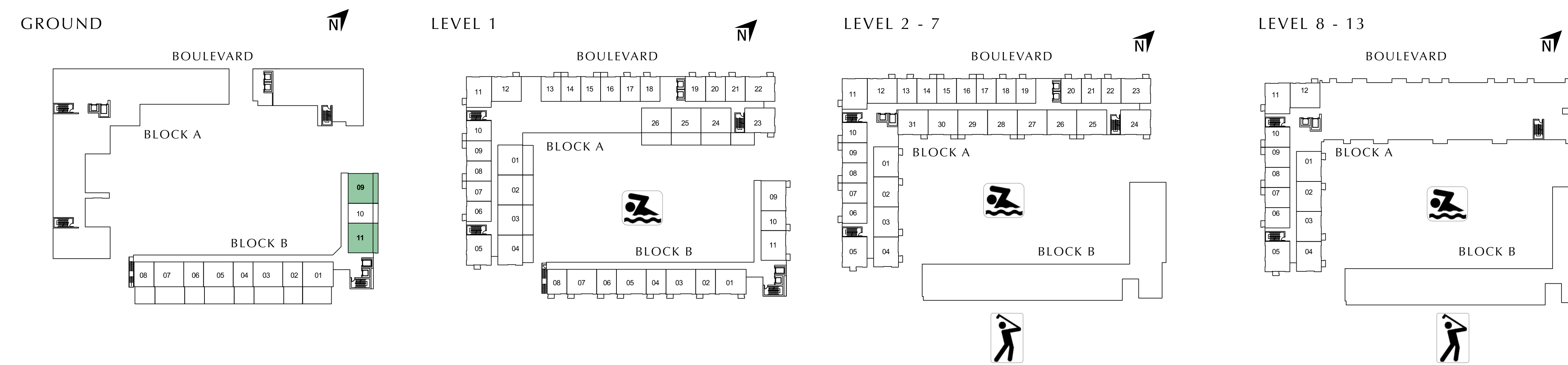
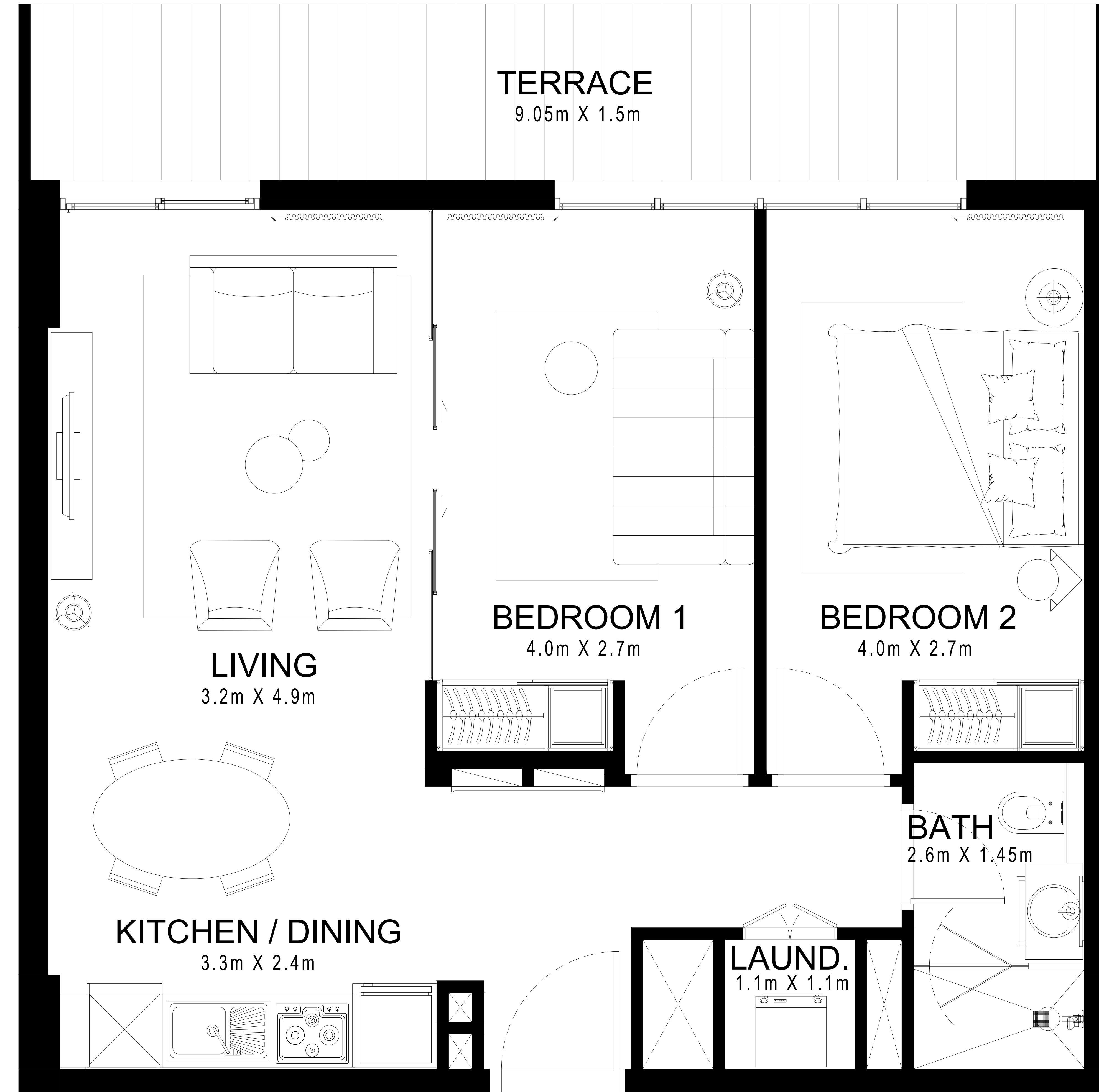
### BLOCK B | 2 BEDROOM

#### UNIT 9 | GROUND

|              |               |             |
|--------------|---------------|-------------|
| SUITE AREA   | 712.57 Sq.ft. | 66.20 Sq.m. |
| BALCONY AREA | 158.88 Sq.ft. | 14.76 Sq.m. |
| TOTAL AREA   | 871.45 Sq.ft. | 80.96 Sq.m. |

#### UNIT 11 | GROUND

|              |               |             |
|--------------|---------------|-------------|
| SUITE AREA   | 706.44 Sq.ft. | 65.63 Sq.m. |
| BALCONY AREA | 154.25 Sq.ft. | 14.33 Sq.m. |
| TOTAL AREA   | 860.69 Sq.ft. | 79.96 Sq.m. |



FLOOR PLAN 1. All dimensions are in imperial and metric, and measured from finish to finish excluding construction tolerances. 2. All materials, dimensions, and drawings are approximate only. 3. Information is subject to change without notice, at developer's absolute discretion. 4. Actual area may vary from the stated area. 5. Drawings not to scale. 6. All images used are for illustrative purposes only and do not represent the actual size, features, specifications, fittings, and furnishings. 7. The developer reserves the right to make revisions / alterations, at it's absolute discretion, without any liability whatsoever.

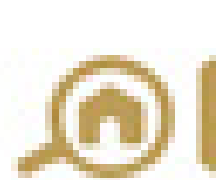

# haus&haus

For more information or to book a viewing tour get in touch  
with our Off Plan & Investment team today:

**+971 4 302 5800**

**info@hausandhaus.com**

**www.hausandhaus.com**

'Agency of the Year 2020 Dubai' – Voted by  bayut and  dubizzle