

DUBAI HILLS ESTATE

# DUBAI HILLS VISTA

INSPIRED BY

*automobili*  
**Lamborghini**

---

FLOOR PLANS

EMAAR

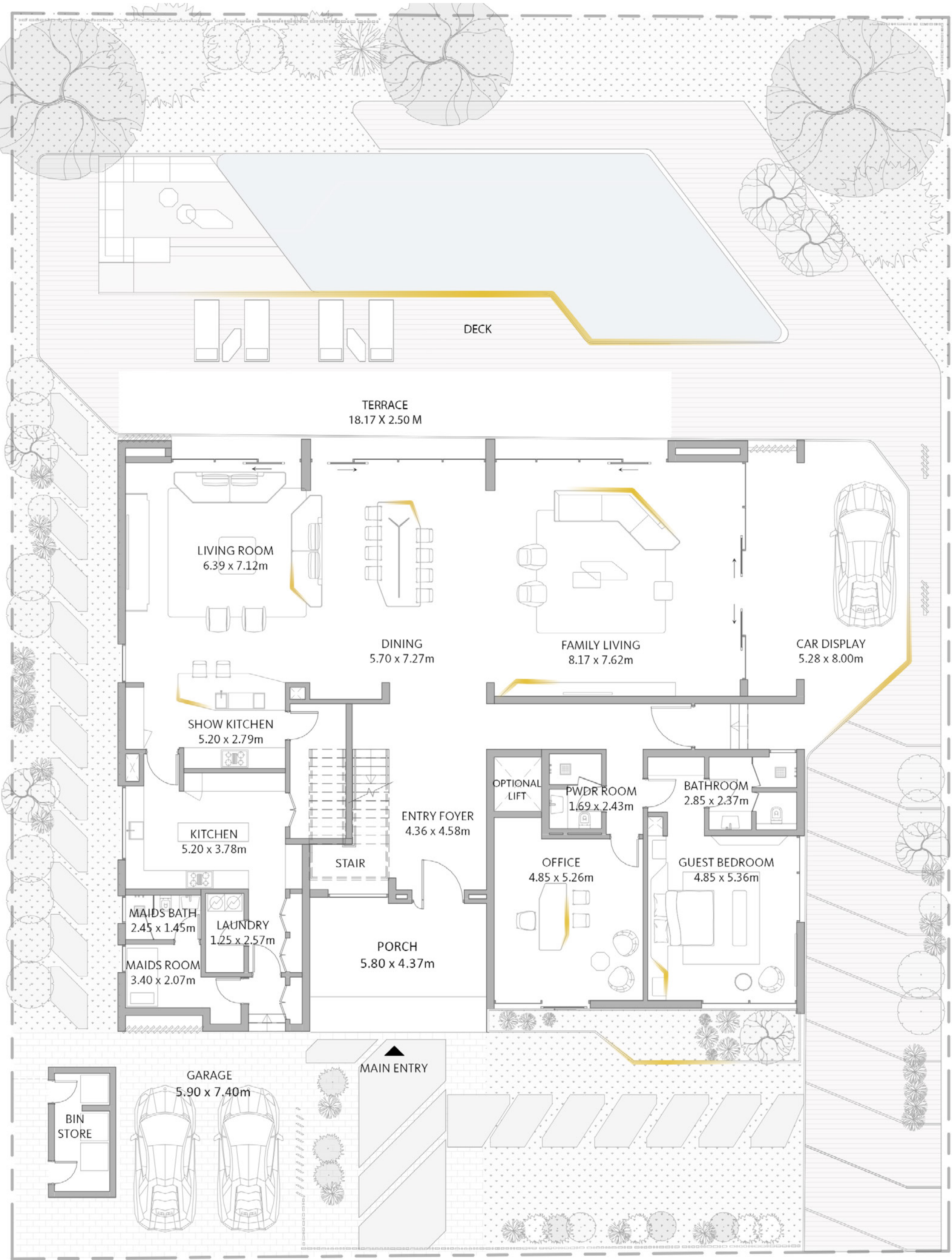
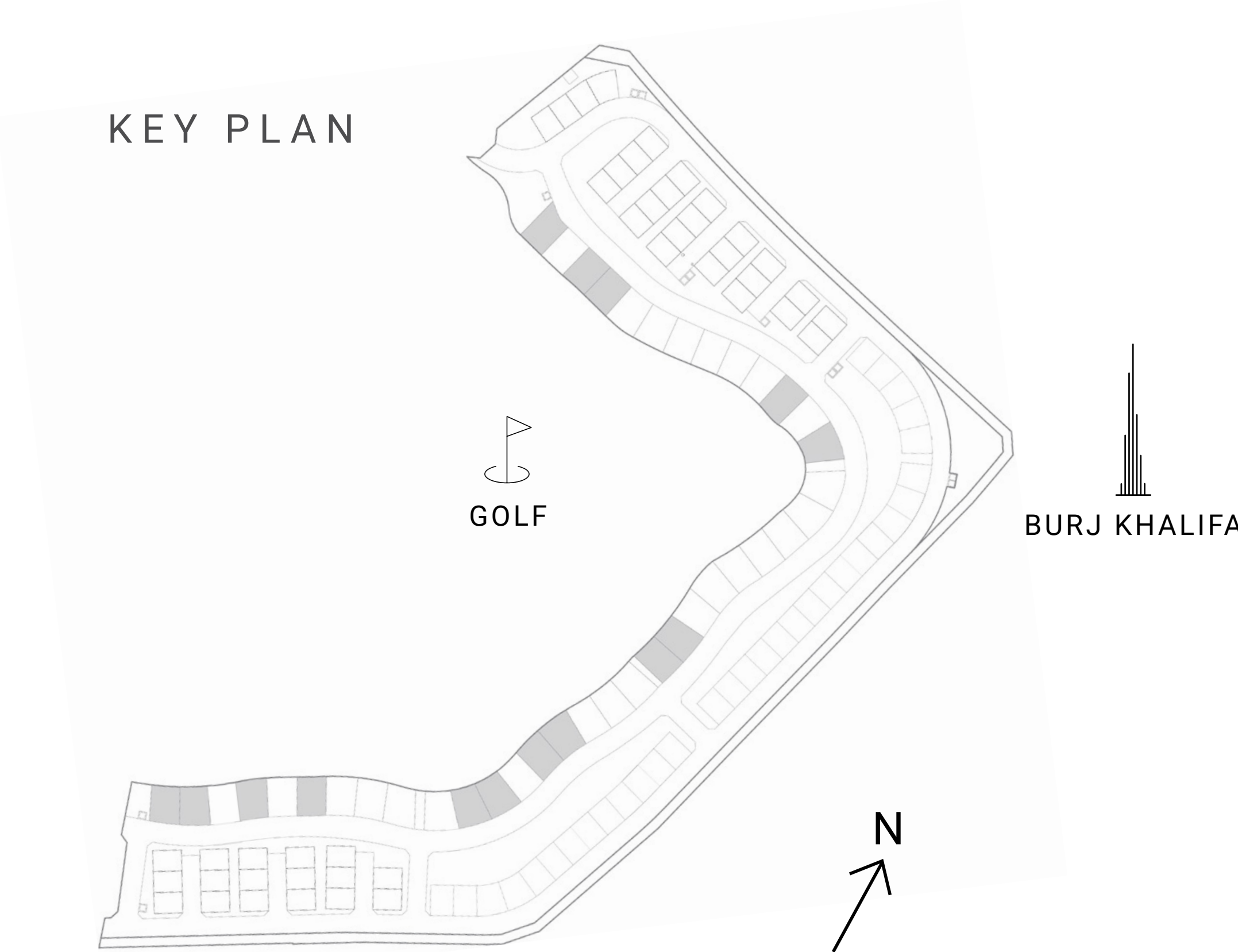


# DUBAI HILLS VISTA

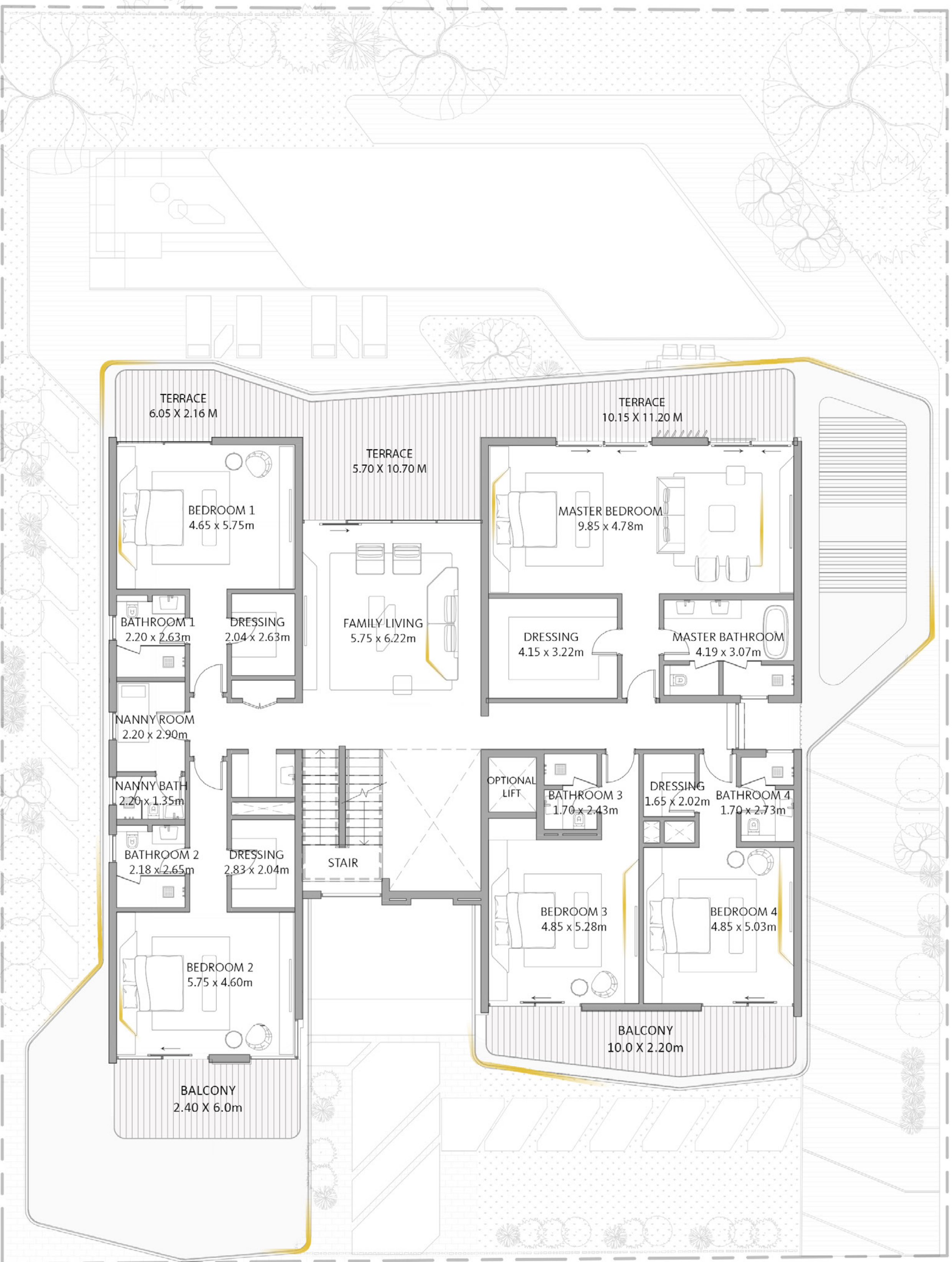
INSPIRED BY  
*automobili*  
**Lamborghini**

## V8 COLLECTION

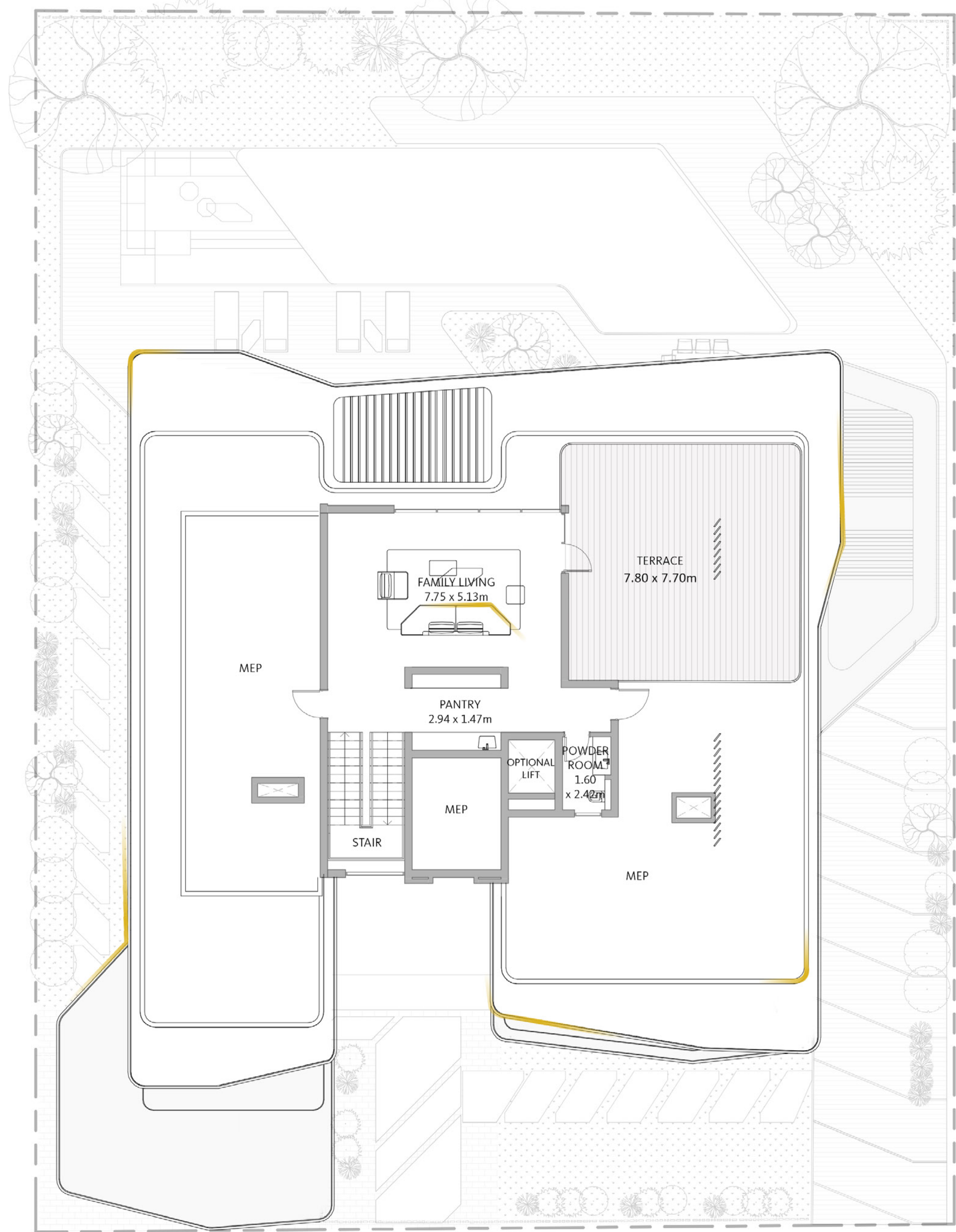
SUITE AREA	8877 SQ.FT.	824.70 SQ.M.
GARAGE	903.10 SQ.FT	83.9 SQ.M
TERRACE AREA	426.25 SQ.FT.	39.60 SQ.M.
BALCONY	1637.08 SQ.FT.	152.09 SQ.M.
TOTAL AREA	11843.42 SQ.FT.	1100.29 SQ.M.
TOTAL BUA	14207.29 SQ.FT.	1319.90 SQ.M.



GROUND FLOOR



FIRST FLOOR



ROOF FLOOR

**FLOOR PLAN 1.** All dimensions are in imperial and metric, and measured from finish to finish excluding construction tolerances. 2. All materials, dimensions, and drawings are approximate only. 3. Information is subject to change without notice, at developer's absolute discretion. 4. Actual area may vary from the stated area. 5. Drawings not to scale. 6. All images used are for illustrative purposes only and do not represent the actual size, features, specifications, fittings, and furnishings. 7. The developer reserves the right to make revisions / alterations, at it's absolute discretion, without any liability whatsoever. 8. The involvement of Automobili Lamborghini S.p.A. in this project is limited to the concepts for the interior design of the Residential Building and to the supply of certain Automobili Lamborghini products provided by EMAAR to the purchasers of the Private Residences. The respective owners of the Private Residence are not authorised to use the Automobili Lamborghini trademarks under any circumstances.

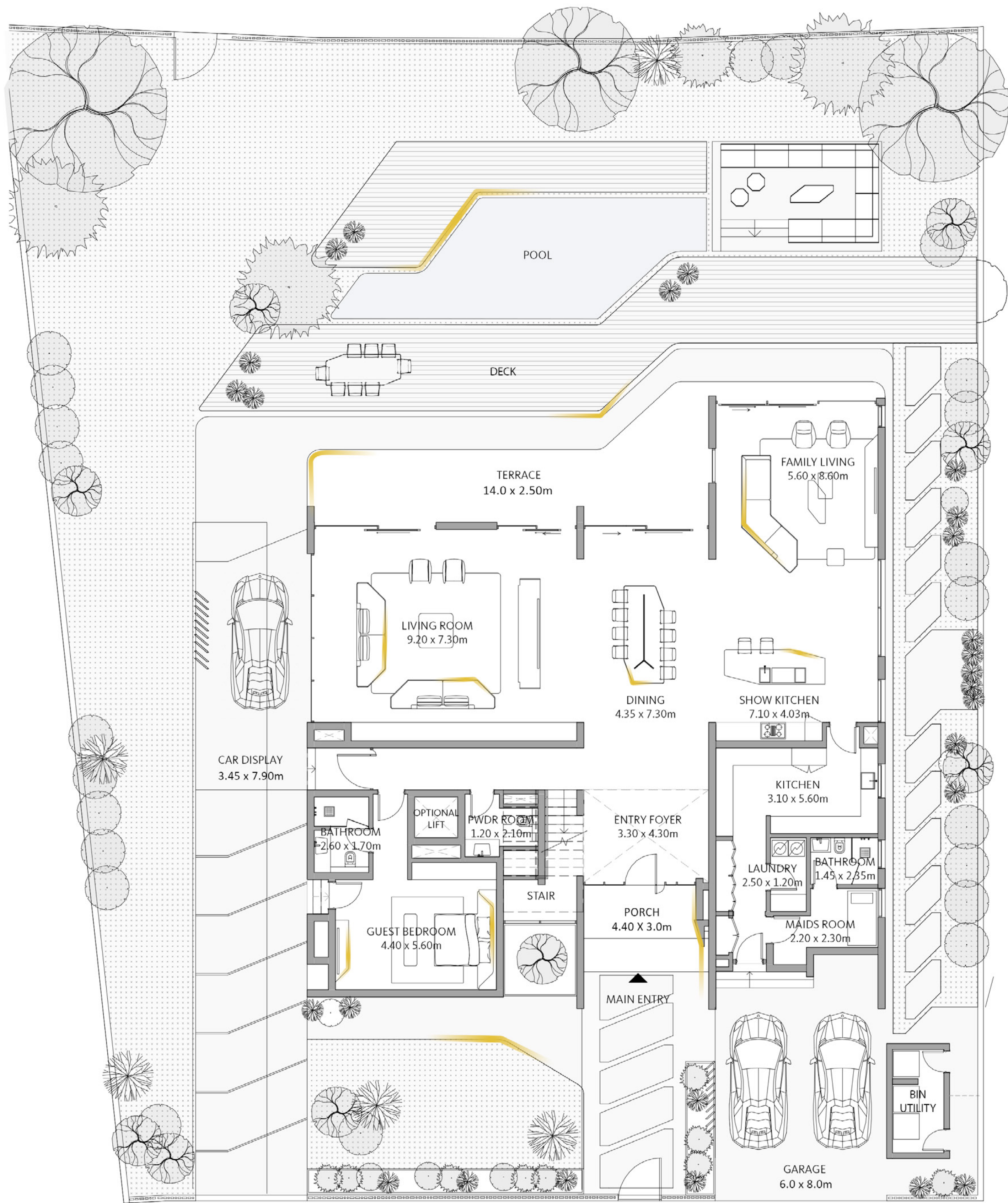
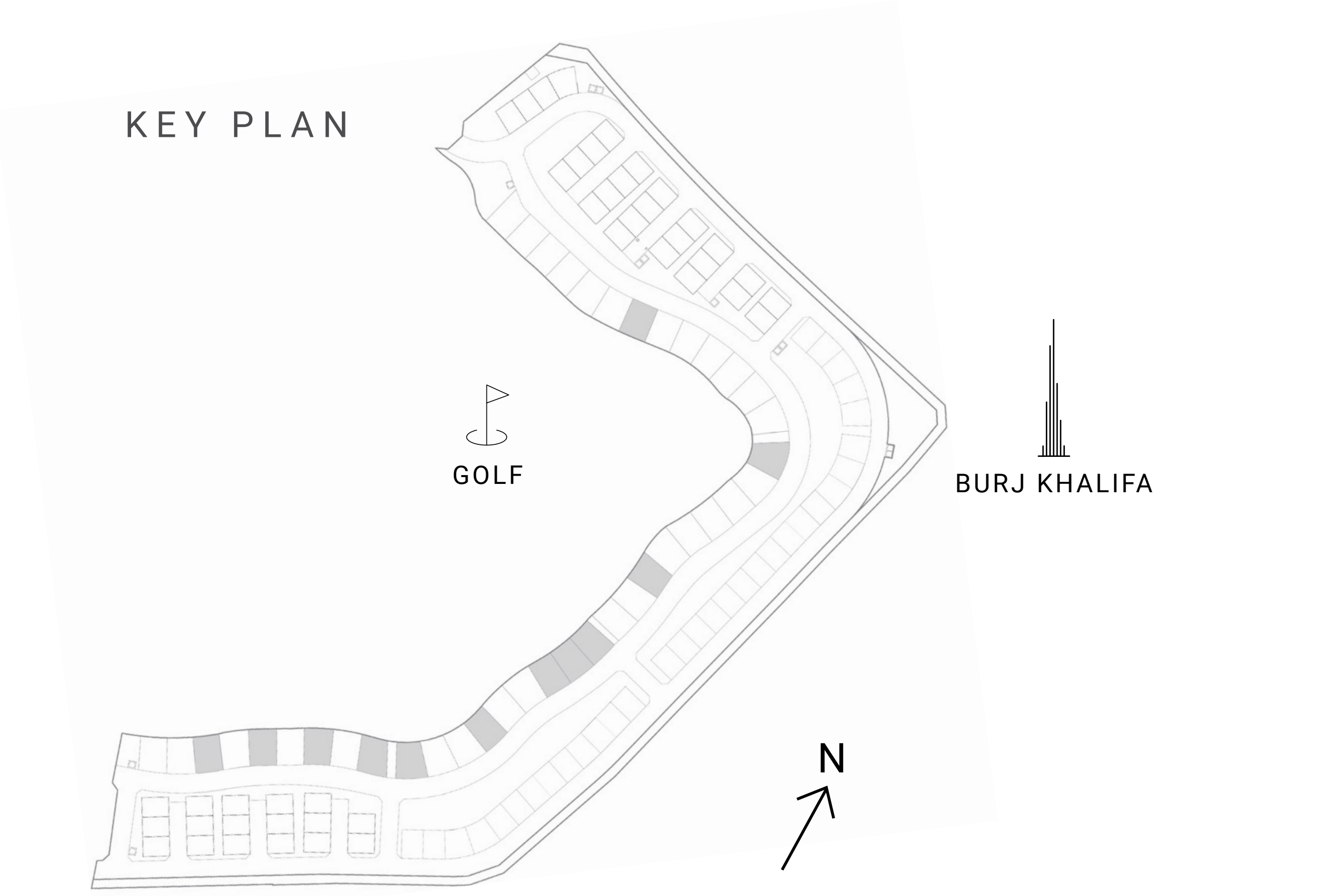


# DUBAI HILLS VISTA

INSPIRED BY  
*automobili*  
**Lamborghini**

## V10 COLLECTION

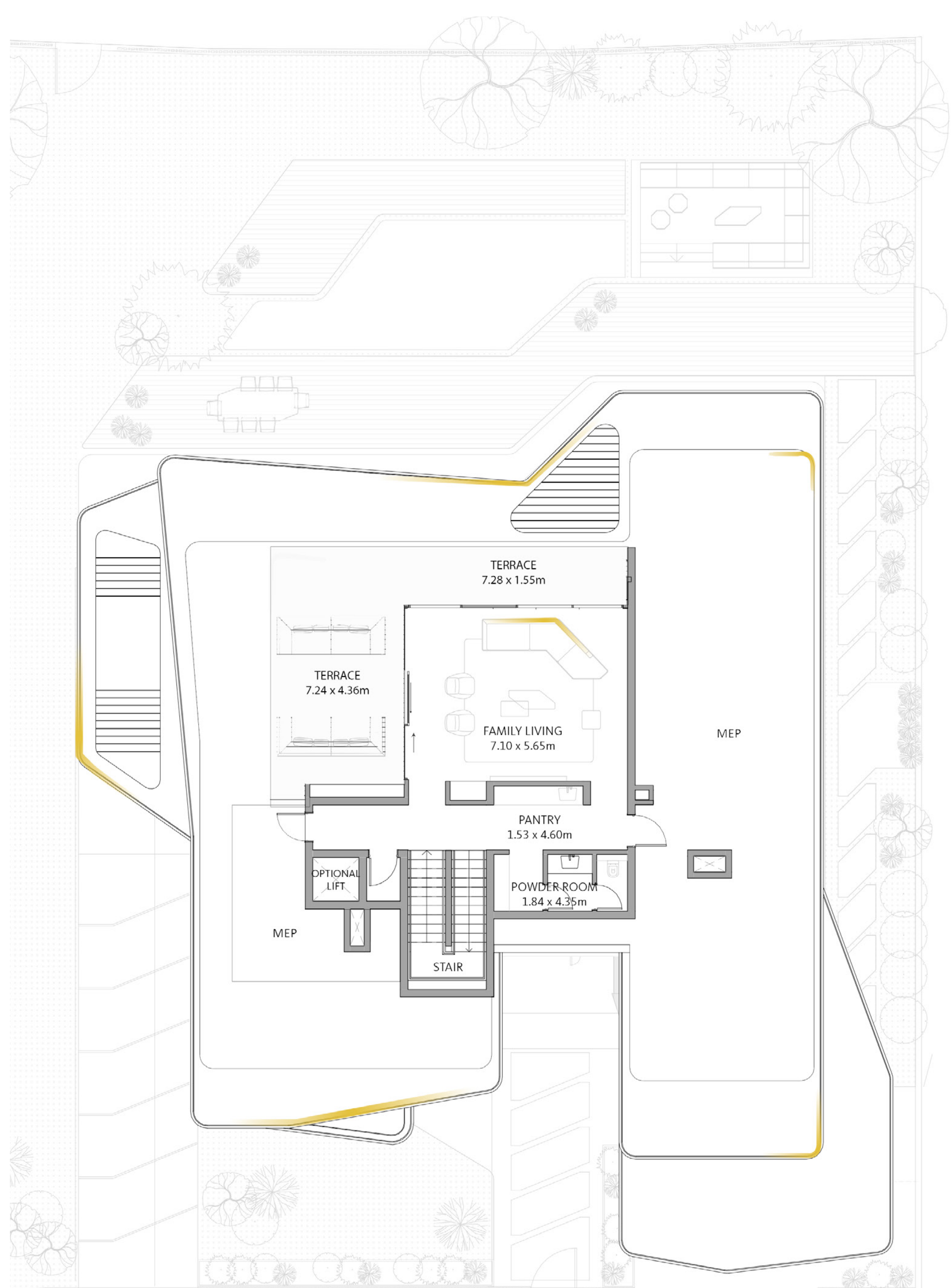
SUITE AREA	8063.68 SQ.FT.	749.14 SQ.M.
GARAGE	902.77 SQ.FT	83.87 SQ.M
TERRACE AREA	131.64 SQ.FT.	12.23 SQ.M.
BALCONY	1267.56 SQ.FT.	117.76 SQ.M.
TOTAL AREA	10365.65 SQ.FT.	963 SQ.M.
TOTAL BUA	12626.07 SQ.FT.	1173 SQ.M.



GROUND FLOOR



FIRST FLOOR



ROOF FLOOR

**FLOOR PLAN 1.** All dimensions are in imperial and metric, and measured from finish to finish excluding construction tolerances. 2. All materials, dimensions, and drawings are approximate only. 3. Information is subject to change without notice, at developer's absolute discretion. 4. Actual area may vary from the stated area. 5. Drawings not to scale. 6. All images used are for illustrative purposes only and do not represent the actual size, features, specifications, fittings, and furnishings. 7. The developer reserves the right to make revisions / alterations, at it's absolute discretion, without any liability whatsoever. 8. The involvement of Automobili Lamborghini S.p.A. in this project is limited to the concepts for the interior design of the Residential Building and to the supply of certain Automobili Lamborghini products provided by EMAAR to the purchasers of the Private Residences. The respective owners of the Private Residence are not authorised to use the Automobili Lamborghini trademarks under any circumstances.

EMAAR

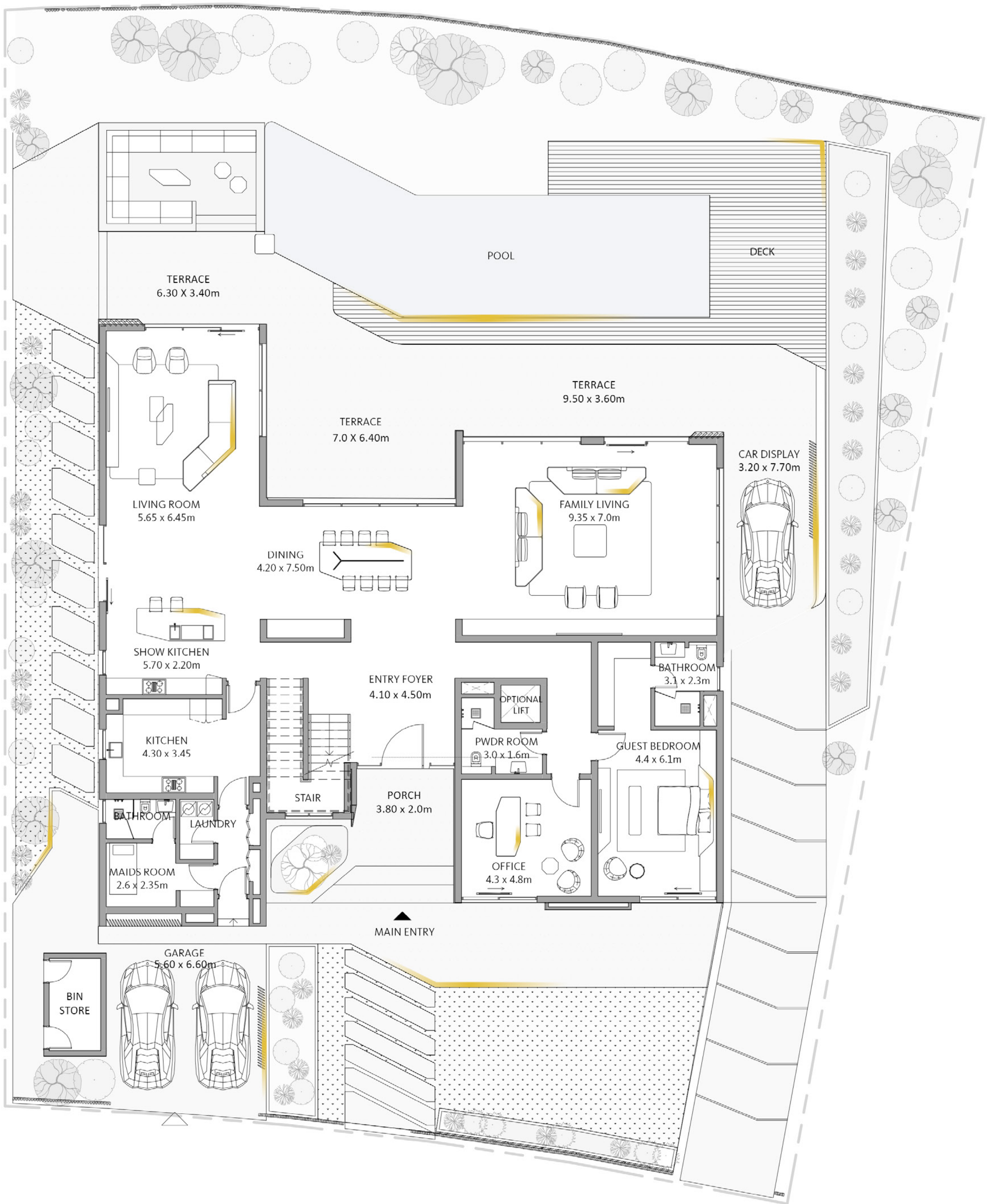
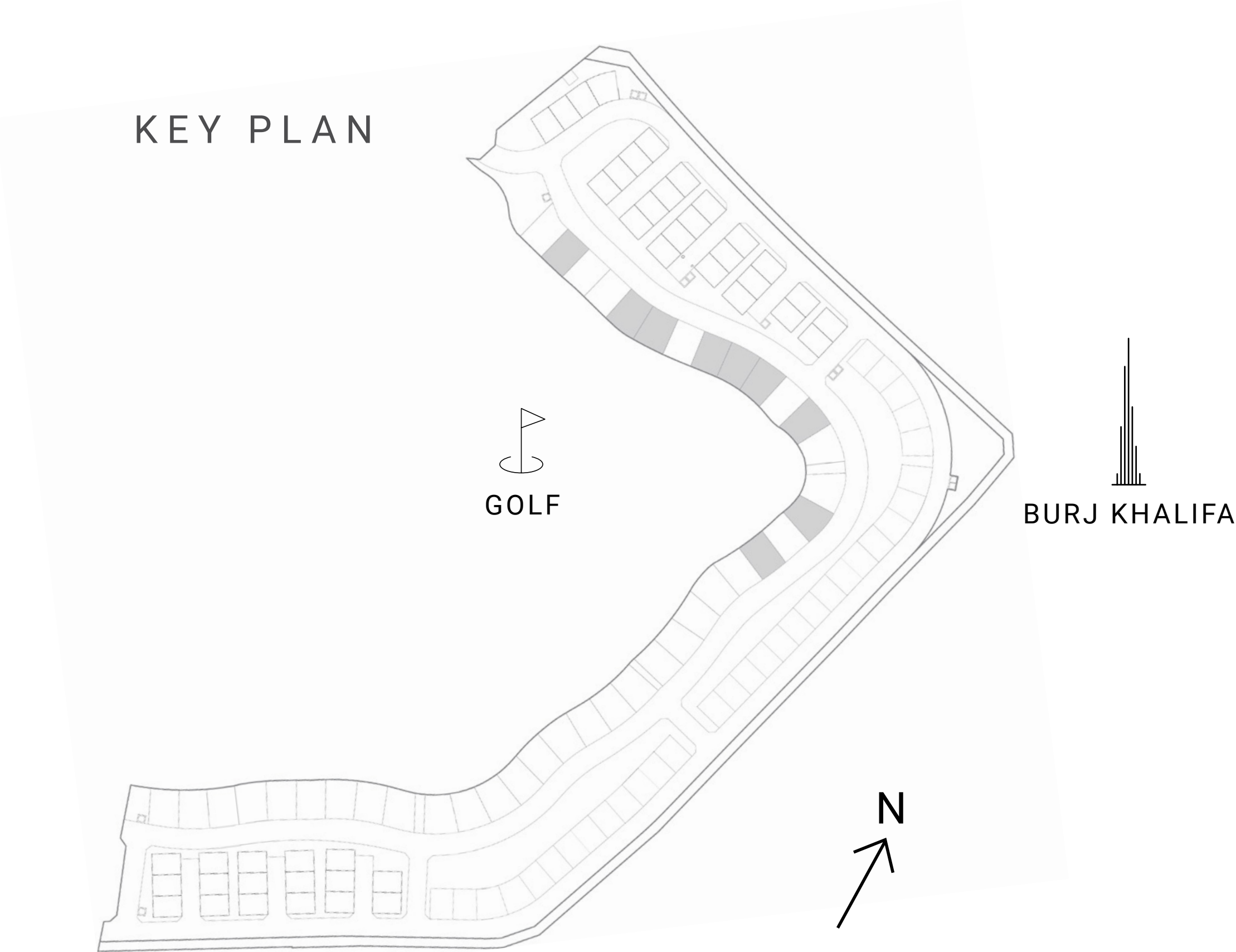


# DUBAI HILLS VISTA

INSPIRED BY  
*automobili*  
**Lamborghini**

## V12 COLLECTION

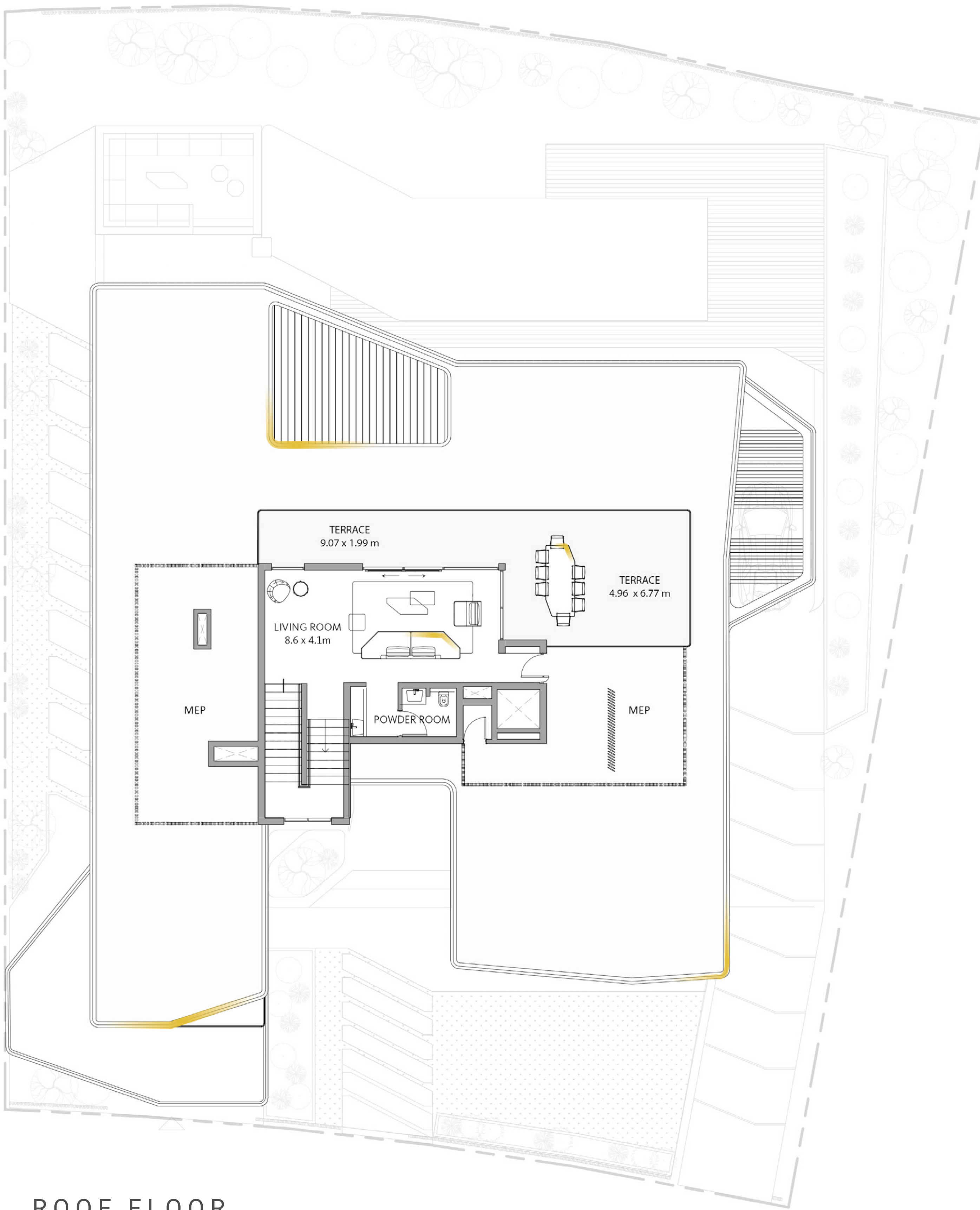
SUITE AREA	9005.84 SQ.FT.	836.67 SQ.M.
GARAGE	636.25 SQ.FT	59.11 SQ.M
TERRACE AREA	316.57 SQ.FT.	29.41 SQ.M.
BALCONY	1307.06 SQ.FT.	121.43 SQ.M.
TOTAL AREA	11265.72 SQ.FT.	1046.62 SQ.M.
TOTAL BUA	13425.83 SQ.FT.	1247.3 SQ.M.



GROUND FLOOR



FIRST FLOOR



ROOF FLOOR

**FLOOR PLAN 1.** All dimensions are in imperial and metric, and measured from finish to finish excluding construction tolerances. 2. All materials, dimensions, and drawings are approximate only. 3. Information is subject to change without notice, at developer's absolute discretion. 4. Actual area may vary from the stated area. 5. Drawings not to scale. 6. All images used are for illustrative purposes only and do not represent the actual size, features, specifications, fittings, and furnishings. 7. The developer reserves the right to make revisions / alterations, at it's absolute discretion, without any liability whatsoever. 8. The involvement of Automobili Lamborghini S.p.A. in this project is limited to the concepts for the interior design of the Residential Building and to the supply of certain Automobili Lamborghini products provided by EMAAR to the purchasers of the Private Residences. The respective owners of the Private Residence are not authorised to use the Automobili Lamborghini trademarks under any circumstances.

**EMAAR**

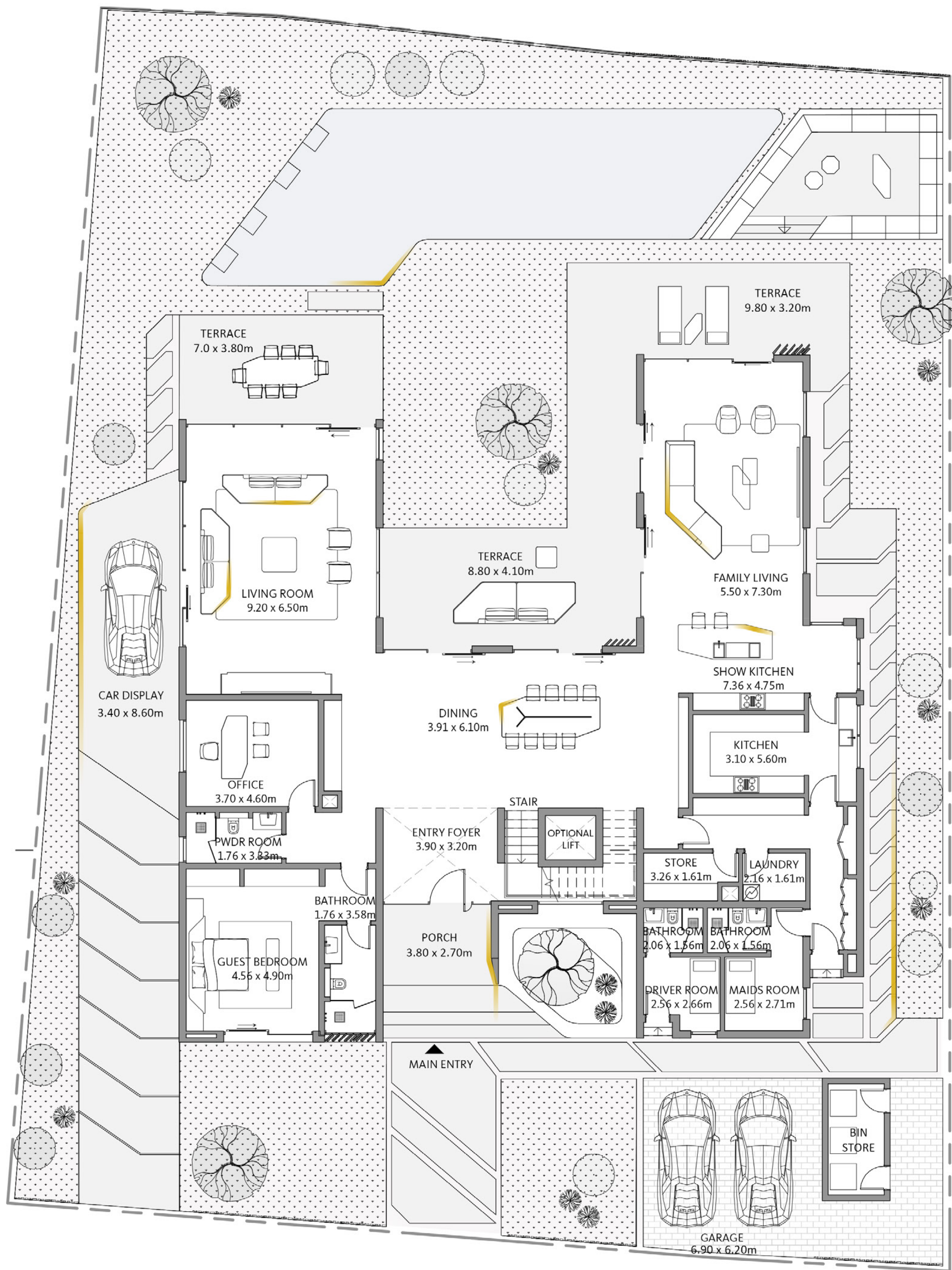
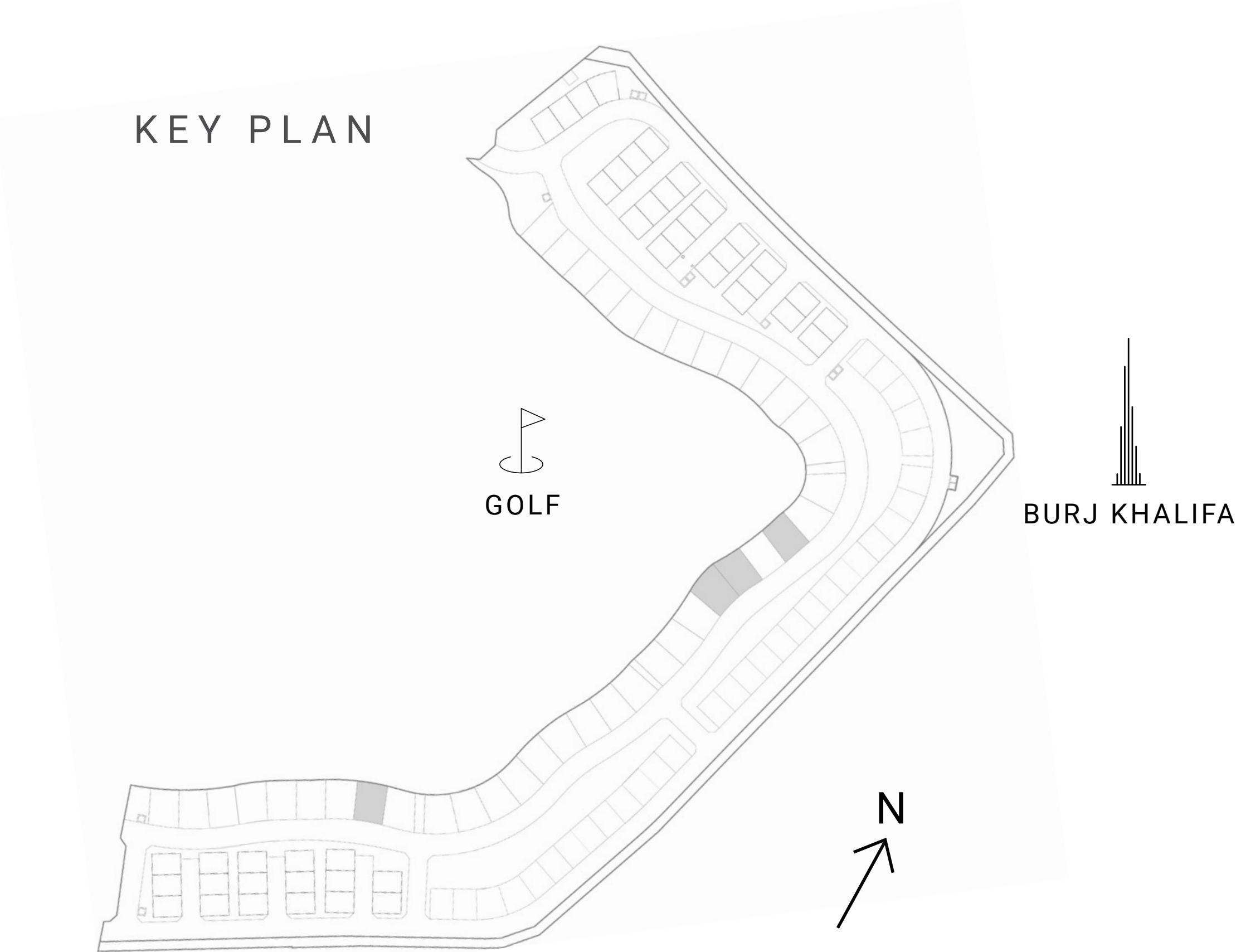


# DUBAI HILLS VISTA

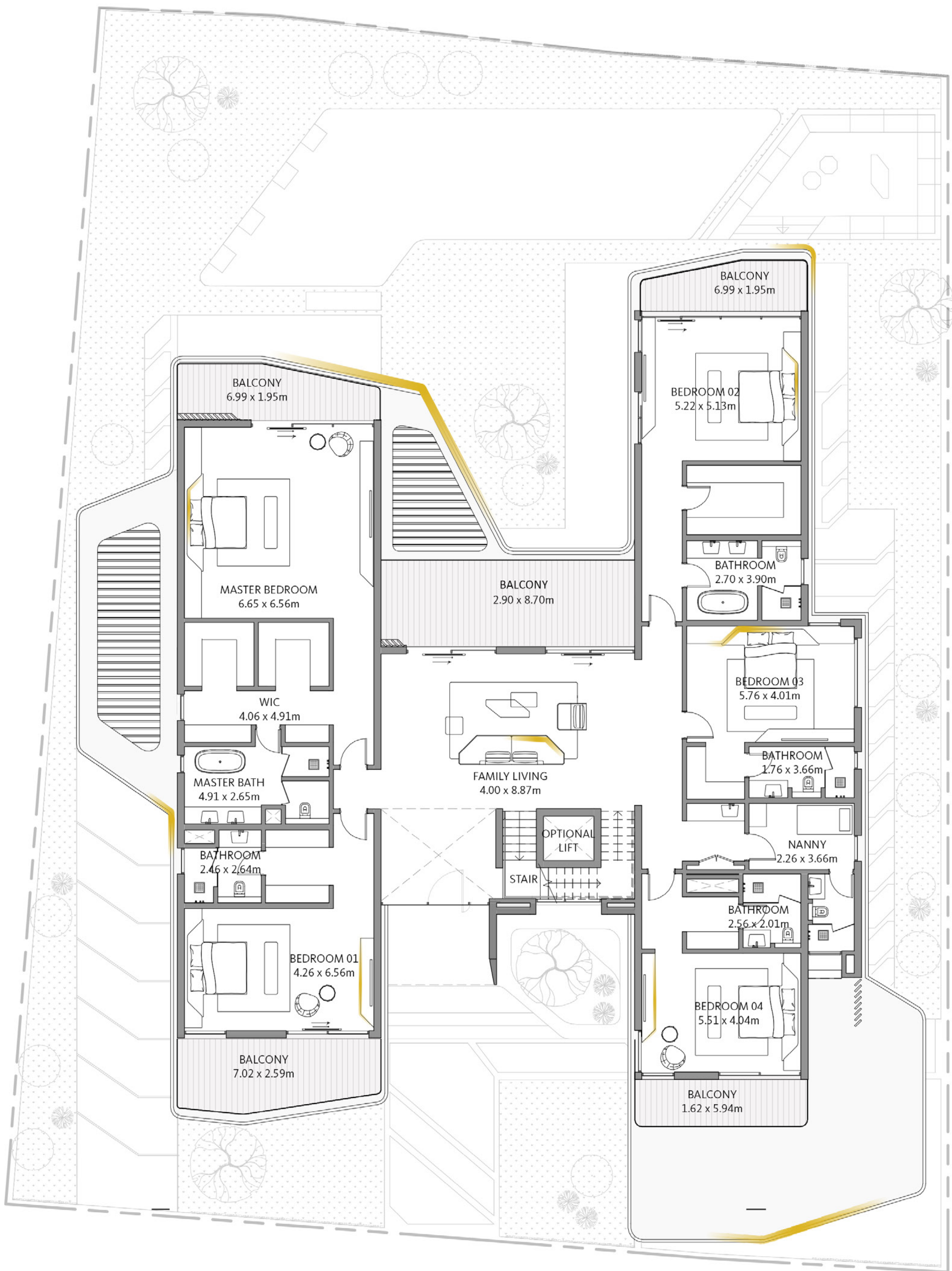
INSPIRED BY  
*automobili*  
**Lamborghini**

V12i COLLECTION

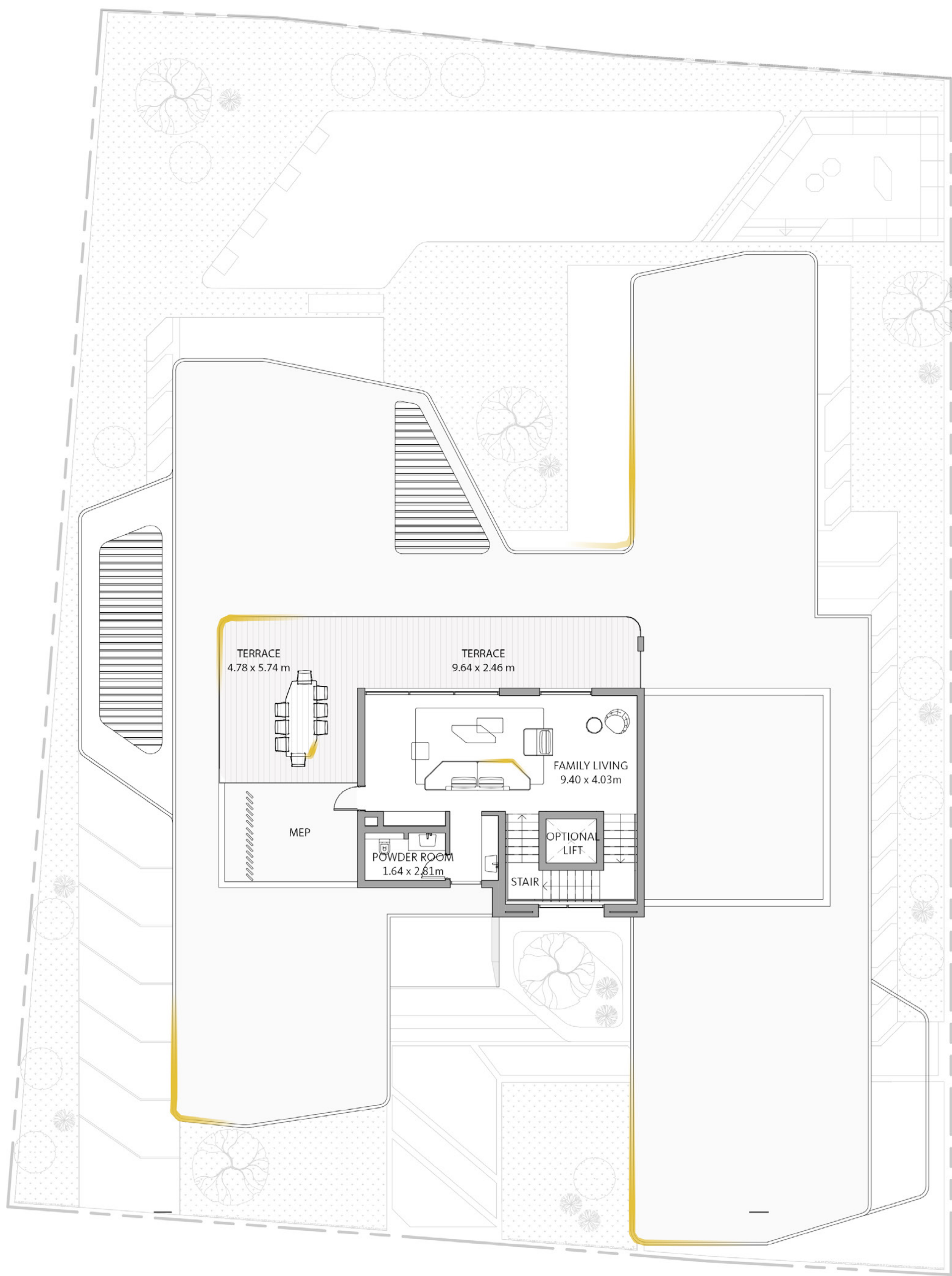
SUITE AREA	9185.92 SQ.FT.	853.40 SQ.M.
GARAGE	878.87 SQ.FT	81.65 SQ.M
TERRACE AREA	451.76 SQ.FT.	41.97 SQ.M.
BALCONY	1398.23 SQ.FT.	129.90 SQ.M.
TOTAL AREA	11914.79 SQ.FT.	1106.92 SQ.M.
TOTAL BUA	14436.77 SQ.FT.	1341.22 SQ.M.



GROUND FLOOR



FIRST FLOOR



ROOF FLOOR

**FLOOR PLAN** 1. All dimensions are in imperial and metric, and measured from finish to finish excluding construction tolerances. 2. All materials, dimensions, and drawings are approximate only. 3. Information is subject to change without notice, at developer's absolute discretion. 4. Actual area may vary from the stated area. 5. Drawings not to scale. 6. All images used are for illustrative purposes only and do not represent the actual size, features, specifications, fittings, and furnishings. 7. The developer reserves the right to make revisions / alterations, at it's absolute discretion, without any liability whatsoever. 8. The involvement of Automobili Lamborghini S.p.A. in this project is limited to the concepts for the interior design of the Residential Building and to the supply of certain Automobili Lamborghini products provided by EMAAR to the purchasers of the Private Residences. The respective owners of the Private Residence are not authorised to use the Automobili Lamborghini trademarks under any circumstances.

EMAAR






For more information or to book a viewing tour get in touch  
with our Off Plan & Investment team today:

**+971 4 302 5800**

**info@hausandhaus.com**

**www.hausandhaus.com**

'Agency of the Year 2020 Dubai' – Voted by  bayut and dubizzle