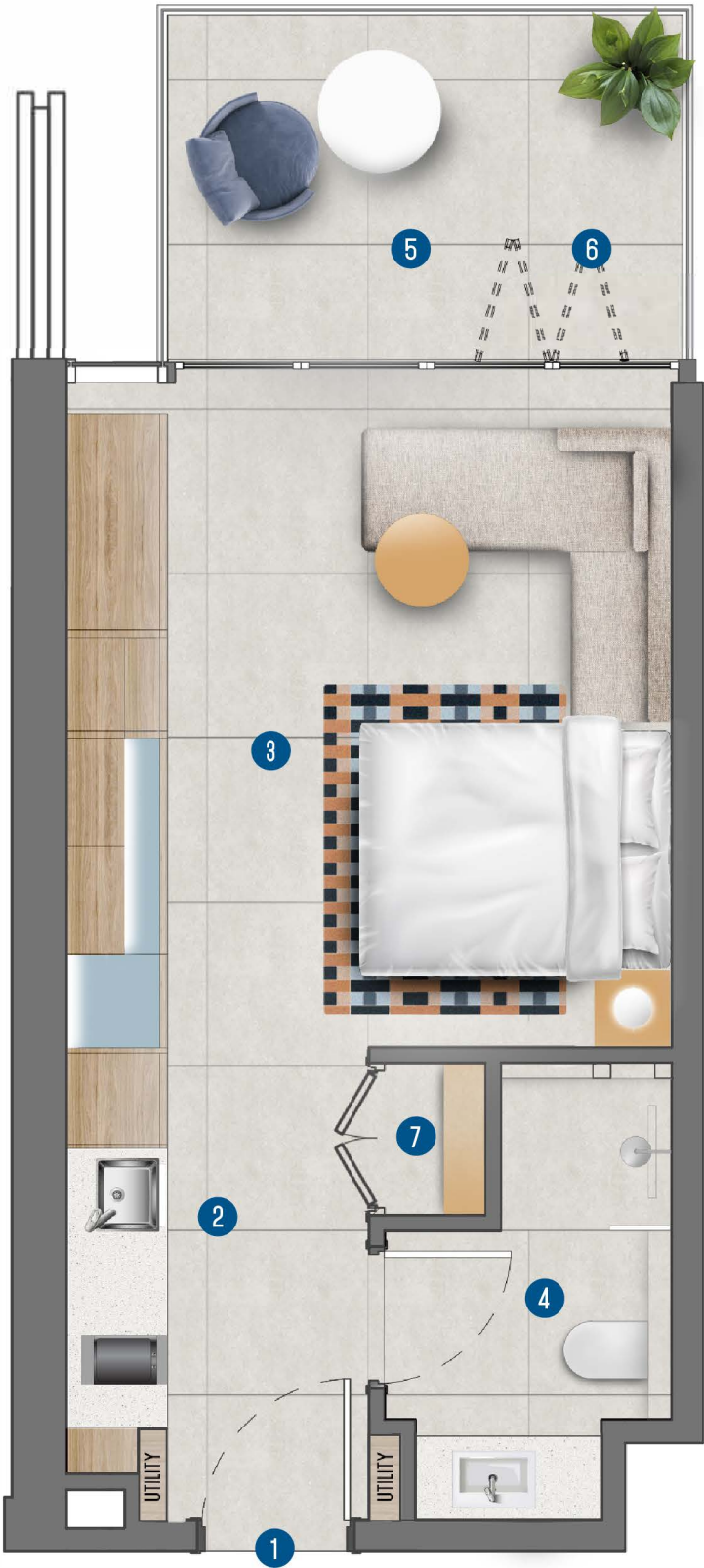


STUDIO FLOOR PLAN

STUDIO	SQFT
INTERNAL AREA	327-353
BALCONY AREA	83-92
TOTAL AREA	410-445

LEGEND

- 1 ENTRANCE
- 2 KITCHEN  
3.00m X 1.90m
- 3 LIVING ROOM & BEDROOM  
4.50m X 3.80m
- 4 BATHROOM  
3.00m X 1.90m
- 5 BALCONY  
3.30m X 2.30m
- 6 BI-FOLD GLASS DOORS
- 7 LAUNDRY



The ROVE logos, trade-marks and trade names (the "ROVE Marks") published in this publication are owned by or licensed to Rove Hotels LLC or its Group Companies (collectively referred to as "ROVE"). The use of the ROVE Marks by IRTH Development LLC (the "Company") has been authorised by ROVE under license, solely in relation to the intention of ROVE to supervise the operation of the "Rove Home Residences by IRTH, Dubai" development located in Downtown, Dubai (the "Building") and in respect of the marketing and sale of the residences within the Building (the "Residences"). The Building and the Residences are not owned, developed or sold by ROVE. The Company, which is not an affiliate of ROVE, is responsible for the marketing and sales of the Residences. Accordingly, ROVE will not be responsible for: (a) any advertising claims or representations in this publication or otherwise made by the Company; (b) any content in this publication; (c) any marketing and/or data collection practices carried out by the Company; (d) any dealings or communications that you have with the Company; and (e) any infringement of third party rights or local laws in connection with this publication. ROVE strongly recommends that you confirm any information appearing in this publication and consult your professional advisors before proceeding with any related transaction. To the maximum extent permitted by law, ROVE will not be liable for any form of loss or damage arising out of or in connection with this publication, the Building, the Residences, or any dealings or communications that you have with the Company.

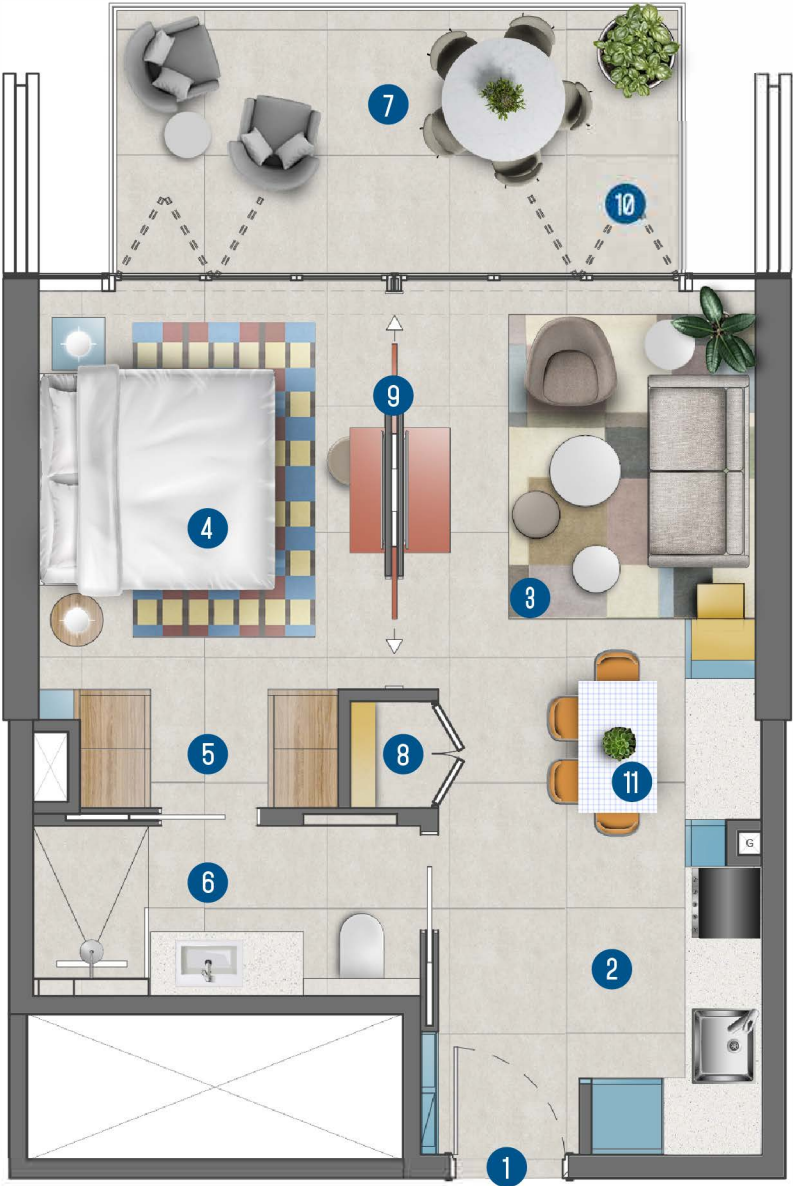
All images used are for illustrative purposes only and do not represent the actual size, features, specifications, fittings, and furnishings. The developer reserves the right to make revisions / alterations, at its absolute discretion, without any liability whatsoever.

1 BR FLOOR PLAN - A

1 BR	SQFT
INTERNAL AREA	479
BALCONY AREA	121
TOTAL AREA	600

LEGEND

- 1 ENTRANCE
- 2 KITCHEN  
2.80m X 2.50m
- 3 LIVING ROOM & DINING AREA  
3.10m X 5.10m
- 4 BEDROOM  
3.60m X 3.00m
- 5 WALK-IN CLOSET  
2.20m X 1.00m
- 6 BATHROOM  
3.40m X 1.50m
- 7 BALCONY  
4.90m X 2.30m
- 8 LAUNDRY
- 9 POCKET WALLS
- 10 BI-FOLD GLASS DOORS
- 11 BUILT-IN SEATING



The ROVE logos, trade-marks and trade names (the "ROVE Marks") published in this publication are owned by or licensed to Rove Hotels LLC or its Group Companies (collectively referred to as "ROVE"). The use of the ROVE Marks by IRTD Development LLC (the "Company") has been authorised by ROVE under license, solely in relation to the intention of ROVE to supervise the operation of the "Rove Home Residences by IRTD, Dubai" development located in Downtown, Dubai (the "Building") and in respect of the marketing and sale of the residences within the Building (the "Residences"). The Building and the Residences are not owned, developed or sold by ROVE. The Company, which is not an affiliate of ROVE, is responsible for the marketing and sales of the Residences. Accordingly, ROVE will not be responsible for: (a) any advertising claims or representations in this publication or otherwise made by the Company; (b) any content in this publication; (c) any marketing and/or data collection practices carried out by the Company; (d) any dealings or communications that you have with the Company; and (e) any infringement of third party rights or local laws in connection with this publication. ROVE strongly recommends that you confirm any information appearing in this publication and consult your professional advisors before proceeding with any related transaction. To the maximum extent permitted by law, ROVE will not be liable for any form of loss or damage arising out of or in connection with this publication, the Building, the Residences, or any dealings or communications that you have with the Company.

All images used are for illustrative purposes only and do not represent the actual size, features, specifications, fittings, and furnishings. The developer reserves the right to make revisions / alterations, at its absolute discretion, without any liability whatsoever.

# 1 BR FLOOR PLAN - B

## LEVEL 14-19

1 BR	SQFT
INTERNAL AREA	656
BALCONY AREA	166
TOTAL AREA	822

### LEGEND

- 1 ENTRANCE
- 2 KITCHEN & DINING AREA  
4.40m X 4.00m
- 2 LIVING ROOM  
4.60m X 3.60m
- 4 BALCONY  
6.70m X 2.30m
- 5 BEDROOM  
3.60m X 3.00m
- 6 WALK-IN CLOSET  
2.20m X 1.90m
- 7 BATHROOM  
2.30m X 2.00m
- 8 POWDER ROOM  
2.50m X 1.10m
- 9 LAUNDRY
- 10 STUDY NOOK
- 11 POCKET WALLS
- 12 BI-FOLD GLASS DOORS



The ROVE logos, trade-marks and trade names (the "ROVE Marks") published in this publication are owned by or licensed to Rove Hotels LLC or its Group Companies (collectively referred to as "ROVE"). The use of the ROVE Marks by IRTD Development LLC (the "Company") has been authorised by ROVE under license, solely in relation to the intention of ROVE to supervise the operation of the "Rove Home Residences by IRTD, Dubai" development located in Downtown, Dubai (the "Building") and in respect of the marketing and sale of the residences within the Building (the "Residences"). The Building and the Residences are not owned, developed or sold by ROVE. The Company, which is not an affiliate of ROVE, is responsible for the marketing and sales of the Residences. Accordingly, ROVE will not be responsible for: (a) any advertising claims or representations in this publication or otherwise made by the Company; (b) any content in this publication; (c) any marketing and/or data collection practices carried out by the Company; (d) any dealings or communications that you have with the Company; and (e) any infringement of third party rights or local laws in connection with this publication. ROVE strongly recommends that you confirm any information appearing in this publication and consult your professional advisors before proceeding with any related transaction. To the maximum extent permitted by law, ROVE will not be liable for any form of loss or damage arising out of or in connection with this publication, the Building, the Residences, or any dealings or communications that you have with the Company.

All images used are for illustrative purposes only and do not represent the actual size, features, specifications, fittings, and furnishings. The developer reserves the right to make revisions / alterations, at its absolute discretion, without any liability whatsoever.

1 BR FLOOR PLAN - C  
LEVEL 2-18

1 BR	SQFT
INTERNAL AREA	657
BALCONY AREA	163-213
TOTAL AREA	820 870

LEGEND

- 1 ENTRANCE
- 2 KITCHEN & DINING AREA  
5.40m X 3.90m
- 2 LIVING ROOM  
4.20m X 3.10m
- 4 BALCONY  
6.40m X 3.10m
- 5 BEDROOM  
3.60m X 3.00m
- 6 WALK-IN CLOSET  
2.20m X 1.90m
- 7 BATHROOM  
2.30m X 2.1m
- 8 POWDER ROOM  
2.10m X 1.50m
- 9 LAUNDRY
- 10 STUDY NOOK
- 11 POCKET WALLS
- 12 BI-FOLD GLASS DOORS



The ROVE logos, trade-marks and trade names (the "ROVE Marks") published in this publication are owned by or licensed to Rove Hotels LLC or its Group Companies (collectively referred to as "ROVE"). The use of the ROVE Marks by IRTD Development LLC (the "Company") has been authorised by ROVE under license, solely in relation to the intention of ROVE to supervise the operation of the "Rove Home Residences by IRTD, Dubai" development located in Downtown, Dubai (the "Building") and in respect of the marketing and sale of the residences within the Building (the "Residences"). The Building and the Residences are not owned, developed or sold by ROVE. The Company, which is not an affiliate of ROVE, is responsible for the marketing and sales of the Residences. Accordingly, ROVE will not be responsible for: (a) any advertising claims or representations in this publication or otherwise made by the Company; (b) any content in this publication; (c) any marketing and/or data collection practices carried out by the Company; (d) any dealings or communications that you have with the Company; and (e) any infringement of third party rights or local laws in connection with this publication. ROVE strongly recommends that you confirm any information appearing in this publication and consult your professional advisors before proceeding with any related transaction. To the maximum extent permitted by law, ROVE will not be liable for any form of loss or damage arising out of or in connection with this publication, the Building, the Residences, or any dealings or communications that you have with the Company.

All images used are for illustrative purposes only and do not represent the actual size, features, specifications, fittings, and furnishings. The developer reserves the right to make revisions / alterations, at its absolute discretion, without any liability whatsoever.

# 1 BR FLOOR PLAN - 2C

## LEVEL 19

1 BR	SQFT
INTERNAL AREA	631
BALCONY AREA	163-213
TOTAL AREA	794 844

### LEGEND

- 1 ENTRANCE
- 2 KITCHEN & DINING AREA  
5.40m X 3.90m
- 2 LIVING ROOM  
4.20m X 3.10m
- 4 POWDER ROOM  
2.1m X 1.30m
- 6 BEDROOM  
3.60m X 3.00m
- 6 WALK-IN CLOSET  
2.20m X 1.80m
- 7 BATHROOM  
2.30m X 2.10m
- 6 BALCONY  
6.40m X 3.10m
- 9 BI-FOLD GLASS DOORS
- 10 STUDY NOOK
- 11 LAUNDRY
- 12 POCKET WALLS



The ROVE logos, trade-marks and trade names (the "ROVE Marks") published in this publication are owned by or licensed to Rove Hotels LLC or its Group Companies (collectively referred to as "ROVE"). The use of the ROVE Marks by IRTD Development LLC (the "Company") has been authorised by ROVE under license, solely in relation to the intention of ROVE to supervise the operation of the "Rove Home Residences" by IRTD, Dubai development located in Downtown, Dubai (the "Building") and in respect of the marketing and sale of the residences within the Building (the "Residences"). The Building and the Residences are not owned, developed or sold by ROVE. The Company, which is not an affiliate of ROVE, is responsible for the marketing and sales of the Residences. Accordingly, ROVE will not be responsible for: (a) any advertising claims or representations in this publication or otherwise made by the Company; (b) any content in this publication; (c) any marketing and/or data collection practices carried out by the Company; (d) any dealings or communications that you have with the Company; and (e) any infringement of third party rights or local laws in connection with this publication. ROVE strongly recommends that you confirm any information appearing in this publication and consult your professional advisors before proceeding with any related transaction. To the maximum extent permitted by law, ROVE will not be liable for any form of loss or damage arising out of or in connection with this publication, the Building, the Residences, or any dealings or communications that you have with the Company.

All images used are for illustrative purposes only and do not represent the actual size, features, specifications, fittings, and furnishings. The developer reserves the right to make revisions / alterations, at its absolute discretion, without any liability whatsoever.

2 BR FLOOR PLAN - A

2 BR	SQFT
INTERNAL AREA	1073
BALCONY AREA	270
TOTAL AREA	1343

LEGEND

- 1 ENTRANCE
- 2 KITCHEN  
5.25m X 1.60m
- 2 LIVING ROOM & DINING AREA  
4.75m X 6.75m
- 4 BEDROOM  
3.70m X 3.70m
- 5 BATHROOM  
3.00m X 1.60m
- 6 MASTER BEDROOM  
3.70m X 3.30m
- 7 WALK-IN CLOSET  
2.10m X 1.60m
- 11 MASTER BATHROOM  
2.90m X 1.90m
- 9 BALCONY  
5.20m X 4.70m
- 10 BI-FOLD GLASS DOORS
- 11 LAUNDRY



The ROVE logos, trade-marks and trade names (the "ROVE Marks") published in this publication are owned by or licensed to Rove Hotels LLC or its Group Companies (collectively referred to as "ROVE"). The use of the ROVE Marks by IRTD Development LLC (the "Company") has been authorised by ROVE under license, solely in relation to the intention of ROVE to supervise the operation of the "Rove Home Residences" by IRTD, Dubai (the "Building") and in respect of the marketing and sale of the residences within the Building (the "Residences"). The Building and the Residences are not owned, developed or sold by ROVE. The Company, which is not an affiliate of ROVE, is responsible for the marketing and sales of the Residences. Accordingly, ROVE will not be responsible for: (a) any advertising claims or representations in this publication or otherwise made by the Company; (b) any content in this publication; (c) any marketing and/or data collection practices carried out by the Company; (d) any dealings or communications that you have with the Company; and (e) any infringement of third party rights or local laws in connection with this publication. ROVE strongly recommends that you confirm any information appearing in this publication and consult your professional advisors before proceeding with any related transaction. To the maximum extent permitted by law, ROVE will not be liable for any form of loss or damage arising out of or in connection with this publication, the Building, the Residences, or any dealings or communications that you have with the Company.

All images used are for illustrative purposes only and do not represent the actual size, features, specifications, fittings, and furnishings. The developer reserves the right to make revisions / alterations, at its absolute discretion, without any liability whatsoever.

2 BR FLOOR PLAN - B

2 BR	SQFT
INTERNAL AREA	962
BALCONY AREA	243
TOTAL AREA	1205

LEGEND

- 1 ENTRANCE
- 2 KITCHEN & DINING AREA  
4.50m X 4.40m
- 2 LIVING ROOM  
4.50m X 4.40m
- 4 BEDROOM  
3.60m X 3.40m
- 6 BATHROOM  
2.60m X 1.60m
- 6 MASTER BEDROOM  
4.20m X 4.00m
- 7 MASTER BATHROOM  
3.80m X 1.50m
- 6 BALCONY 1  
4.90m X 1.70m
- 9 BALCONY 2  
6.10m X 2.30m
- 10 STUDY NOOK
- 11 BI-FOLD GLASS DOORS
- 12 LAUNDRY



The ROVE logos, trade-marks and trade names (the "ROVE Marks") published in this publication are owned by or licensed to Rove Hotels LLC or its Group Companies (collectively referred to as "ROVE"). The use of the ROVE Marks by IRTD Development LLC (the "Company") has been authorised by ROVE under license, solely in relation to the intention of ROVE to supervise the operation of the "Rove Home Residences by IRTD, Dubai" development located in Downtown, Dubai (the "Building") and in respect of the marketing and sale of the residences within the Building (the "Residences"). The Building and the Residences are not owned, developed or sold by ROVE. The Company, which is not an affiliate of ROVE, is responsible for the marketing and sales of the Residences. Accordingly, ROVE will not be responsible for: (a) any advertising claims or representations in this publication or otherwise made by the Company; (b) any content in this publication; (c) any marketing and/or data collection practices carried out by the Company; (d) any dealings or communications that you have with the Company; and (e) any infringement of third party rights or local laws in connection with this publication. ROVE strongly recommends that you confirm any information appearing in this publication and consult your professional advisors before proceeding with any related transaction. To the maximum extent permitted by law, ROVE will not be liable for any form of loss or damage arising out of or in connection with this publication, the Building, the Residences, or any dealings or communications that you have with the Company.

All images used are for illustrative purposes only and do not represent the actual size, features, specifications, fittings, and furnishings. The developer reserves the right to make revisions / alterations, at its absolute discretion, without any liability whatsoever.



For more information or to book a viewing tour get in touch  
with our Off Plan & Investment team today:

**+971 4 302 5800**

**info@hausandhaus.com**

**[www.hausandhaus.com](http://www.hausandhaus.com)**

**Award-winning Dubai Real Estate agency**