



## Garden Homes Frond B, Palm Jumeirah

# Garden Homes Frond B

Palm Jumeirah

 4  5  5000 sq.ft

## Property Description

haus & haus is proud to present this four bed Mediterranean Atrium Entry Garden Home on the Palm Jumeirah. Boasting stunning, construction free views, the villa is vacant and unfurnished. A must see.

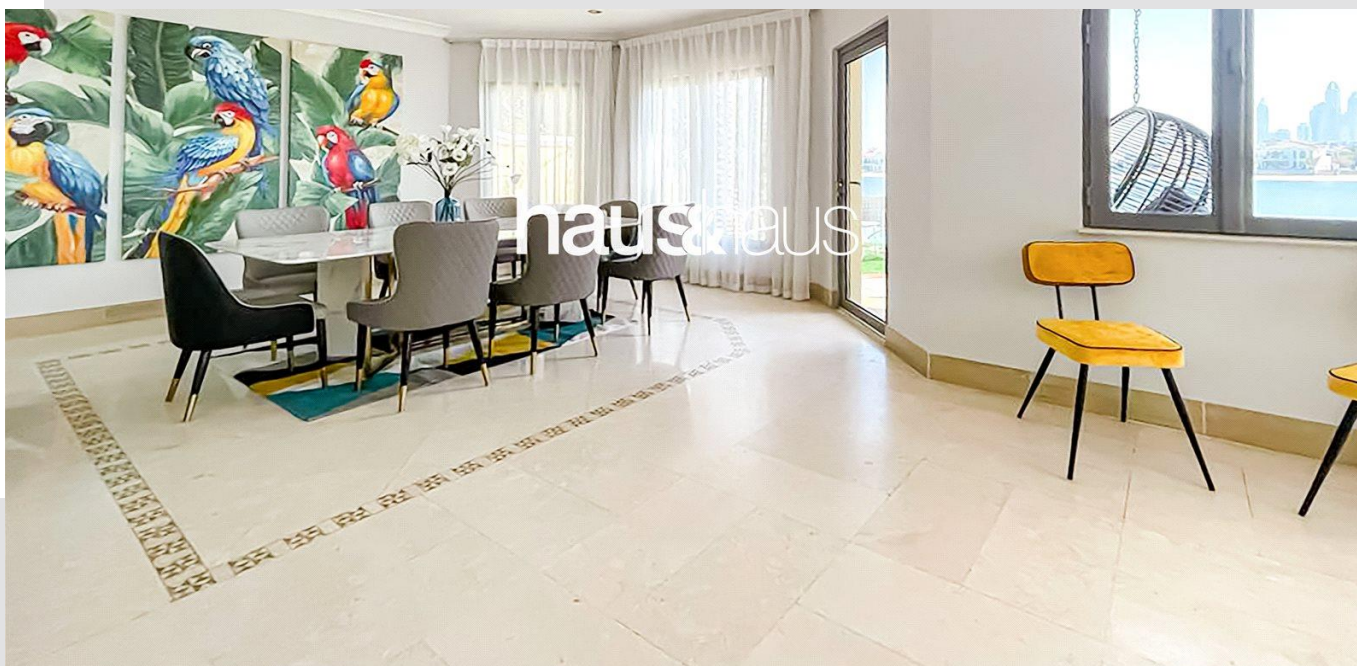
## Property Features

- Now Available
- 4 Bedroom + Maids Room
- Unfurnished
- High Number
- Nice Garden
- Great Landlord
- Direct Beach Access
- Call Roshanara on +971 (0)56 195 1910

AED 1,050,000 per annum

Available:

Vacant



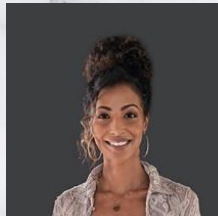
# Garden Homes Frond B

Palm Jumeirah





For viewing and more information,  
please contact our property specialist:



**Roshanara Ebrahim**

Consultant | BRN: 53267

t: +971 (0) 4 302 5856

m: +971 (0) 56 195 1910

e: roshanara@hausandhaus.com

### Disclaimer

Every attempt has been made to ensure accuracy, however these property particulars are approximate and for illustrative purposes only. They have been prepared in good faith and they are not intended to constitute part of an offer of contract. We have not carried out a structural survey and the services, appliances and specific fittings have not been tested. All photographs, measurements, floor plans and distances referred to

are given as a guide only and should not be relied upon for the purchase of any fixture or fittings. Lease details, service charges and ground rent (where applicable) are given as a guide only and should be checked prior to agreeing a sale. The copyright of details, photographs and floor plans remain exclusive to haus & haus Real Estate Broker.