

Shell & Core office | Panoramic Views | 17 parking

Control Tower, Motor City

Shell & Core office | Panoramic

Control Tower, Motor City



13862 sq.ft

Property Description

haus & haus is pleased to offer you, shell and core office for sale in Motor City in very Luxury building, high floor with panoramic view.

The office is combined of 4 units, has 17 allocated parking, free parking available around the building.

Property Features

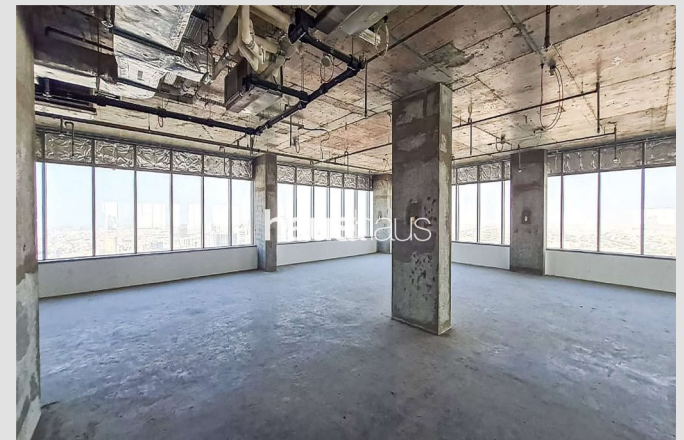
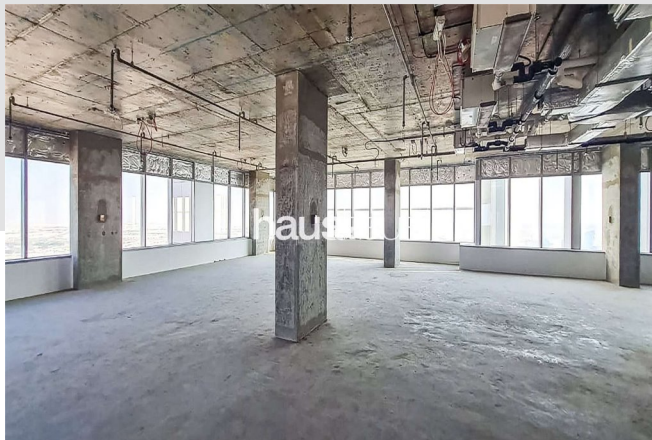
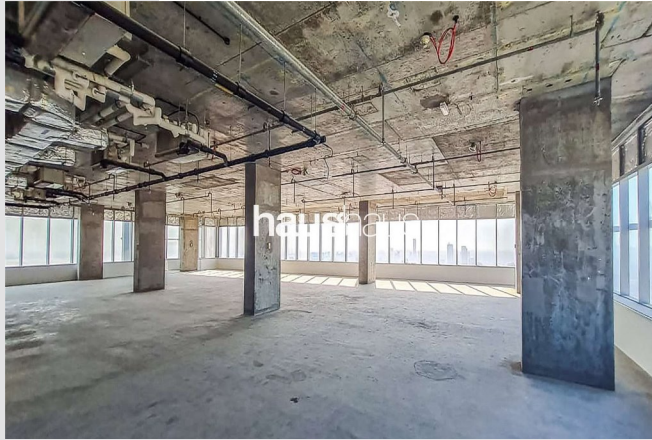
- 13,862 sq.ft
- High floor
- Panoramic view
- 17 parking allocated
- Restaurants and shops available in the building
- Multi sizes available
- High end clientele
- Call Hanada on +971 (0)55 974 0961 for more details

Asking Price: AED 8,317,200



Shell & Core office | Panoramic Views | 17 parking

Control Tower, Motor City





For viewing and more information,
please contact our property specialist:



Hanada Abou Diab

Commercial Consultant | BRN: 43358

t: +971 (0) 4 302 5956

m: +971 (0) 55 974 0961

e: hanada@hausandhaus.com

Disclaimer

Every attempt has been made to ensure accuracy; however, these property particulars are approximate and for illustrative purposes only. They have been prepared in good faith and they are not intended to constitute part of an offer of contract. We have not carried out a structural survey and the services, appliances and specific fittings have not been tested. All photographs, measurements, floor plans and distances referred to

are given as a guide only and should not be relied upon for the purchase of any fixture or fittings. Lease details, service charges and ground rent (where applicable) are given as a guide only and should be checked prior to agreeing a sale. The copyright of details, photographs and floor plans remain exclusive to haus & haus Commercial.