

Garden Homes Frond E, Palm Jumeirah

Garden Homes Frond E

Palm Jumeirah

 5  6  6720 sq.ft

Property Description

haus & haus is pleased to welcome to the market this highly desirable Atrium Entry II. The property located on Frond E is the best example on the market due to the condition its represented in. The Modern European style of the home features a light open plan layout with x2 family living rooms downstairs and x5 full en-suite bedrooms on 1st Floor.

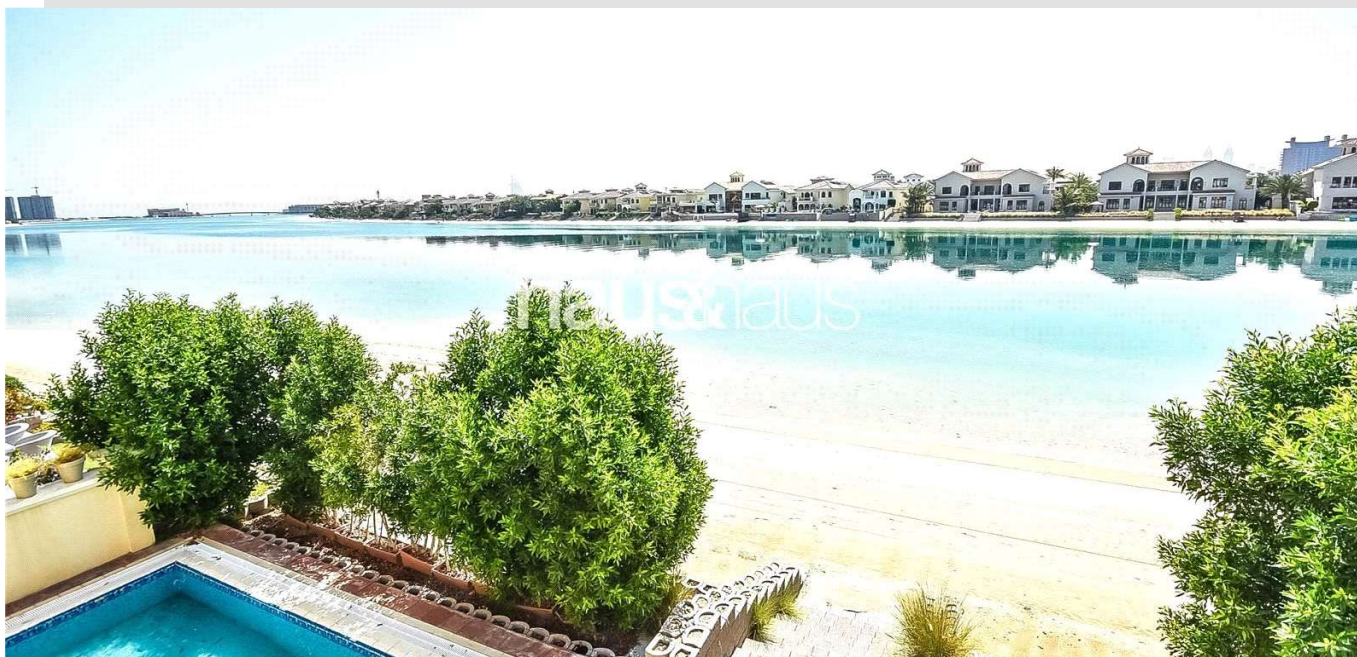
Property Features

- Atrium Entry II
- Best Condition on Market
- 5 Bedroom En-suite
- Two Ample Living Rooms
- Landscaped Garden with Chilled Pool
- Beach Front Location
- Motivated Seller
- Call Lucas on +971 (0)58 584 3002 to arrange a viewing

Asking Price: AED 19,900,000

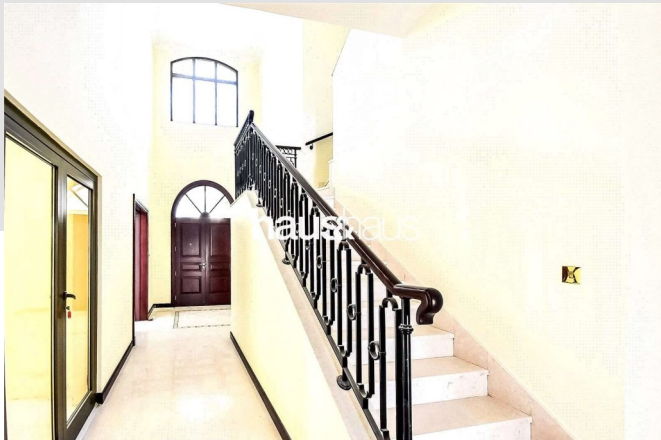
Available:

Vacant soon



Garden Homes Frond E

Palm Jumeirah





For viewing and more information,
please contact our property specialist:



Lucas Sturman

Consultant | BRN: 49404

t: +971 (0) 4 302 5934

m: +971 (0) 58 584 3002

e: lucas@hausandhaus.com

Disclaimer

Every attempt has been made to ensure accuracy, however these property particulars are approximate and for illustrative purposes only. They have been prepared in good faith and they are not intended to constitute part of an offer of contract. We have not carried out a structural survey and the services, appliances and specific fittings have not been tested. All photographs, measurements, floor plans and distances referred to

are given as a guide only and should not be relied upon for the purchase of any fixture or fittings. Lease details, service charges and ground rent (where applicable) are given as a guide only and should be checked prior to agreeing a sale. The copyright of details, photographs and floor plans remain exclusive to haus & haus Real Estate Broker.