



Garden Homes Frond E, Palm Jumeirah

haus & haus Real Estate Broker | www.hausandhaus.com

Lucas Sturman, Consultant | +971 (0) 4 302 5934 | +971 (0) 58 584 3002 | lucas@hausandhaus.com

haus&haus

Garden Homes Frond E

Palm Jumeirah

 4  6  7300 sq.ft

Property Description

haus & haus is pleased to offer to the market this vacant on transfer Atrium Entry Villa on Frond E. The property is facing towards the Atlantis benefiting from a sunset view as well as being in a close to tip location.



Property Features

- High Number
- Extended Plot
- Vacant on Transfer
- 4 Bedroom + En-suite
- Stunning Views
- Swimming Pool
- Private Beach
- Call Lucas on +971 (0)58 584 3002 for more details

Asking Price: AED 17,500,000

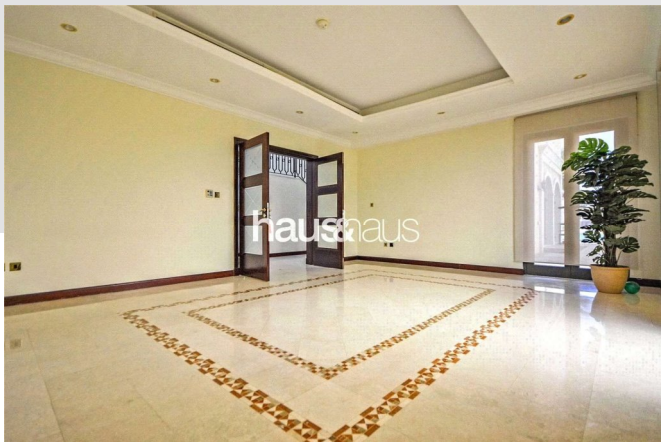
Available:

Vacant



Garden Homes Frond E

Palm Jumeirah





For viewing and more information,
please contact our property specialist:



Lucas Sturman

Consultant | BRN: 42238

t: +971 (0) 4 302 5934

m: +971 (0) 58 584 3002

e: lucas@hausandhaus.com

Disclaimer

Every attempt has been made to ensure accuracy, however these property particulars are approximate and for illustrative purposes only. They have been prepared in good faith and they are not intended to constitute part of an offer of contract. We have not carried out a structural survey and the services, appliances and specific fittings have not been tested. All photographs, measurements, floor plans and distances referred to

are given as a guide only and should not be relied upon for the purchase of any fixture or fittings. Lease details, service charges and ground rent (where applicable) are given as a guide only and should be checked prior to agreeing a sale. The copyright of details, photographs and floor plans remain exclusive to haus & haus Real Estate Broker.