



SLS Dubai Hotel & Residences, Business Bay

haus & haus Real Estate Broker | www.hausandhaus.com

Stephen Wheatley, Consultant | +971 (0) 4 302 5840 | +971 (0) 50 941 0338 | stephen@hausandhaus.com

haus&haus

SLS Dubai Hotel & Residences

Business Bay

 0  1  655 sq.ft

Property Description

Stephen at haus & haus is proud to present this huge studio with a full view of the creek in SLS Hotel and Residences, Business Bay. Property is leased unfurnished with built in kitchen appliances.

Property Features

- Full Creek View
- Mid to High Floor
- Unfurnished
- Built in Wardrobes
- Covered Parking
- Equipped Kitchen
- Security
- State-of-the-art Gym
- Infinity Pool
- Contact Stephen on 0509410338

AED 85,000 per annum

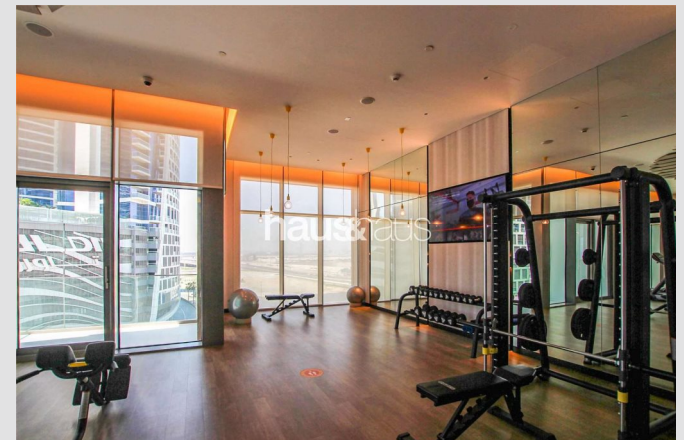
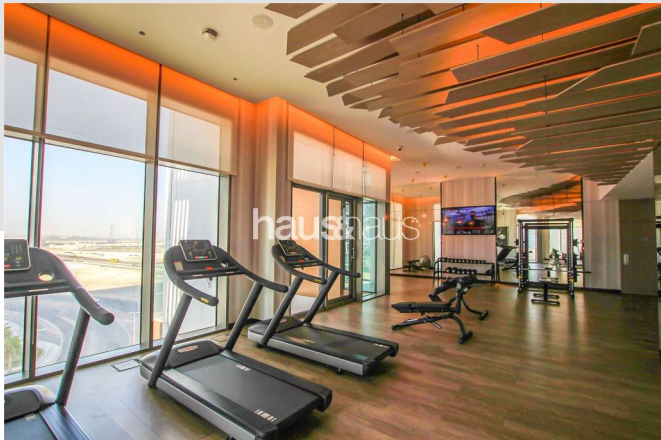
Available:

Now



SLS Dubai Hotel & Residences

Business Bay





For viewing and more information,
please contact our property specialist:



Stephen Wheatley

Consultant | BRN: 28117

t: +971 (0) 4 302 5840

m: +971 (0) 50 941 0338

e: stephen@hausandhaus.com

Disclaimer

Every attempt has been made to ensure accuracy, however these property particulars are approximate and for illustrative purposes only. They have been prepared in good faith and they are not intended to constitute part of an offer of contract. We have not carried out a structural survey and the services, appliances and specific fittings have not been tested. All photographs, measurements, floor plans and distances referred to

are given as a guide only and should not be relied upon for the purchase of any fixture or fittings. Lease details, service charges and ground rent (where applicable) are given as a guide only and should be checked prior to agreeing a sale. The copyright of details, photographs and floor plans remain exclusive to haus & haus Real Estate Broker.