



Burj Khalifa, Downtown

Burj Khalifa

Downtown

 4  6  6406 sq.ft

Property Description

haus and haus are extremely proud to present this enormous 6,406sq.ft penthouse in the world renowned Burj Khalifa. This unique apartment comes either furnished or unfurnished, has three alternative entrance points, and comes fitted with an office along with a Jacuzzi on the 2000+sq.ft terrace.



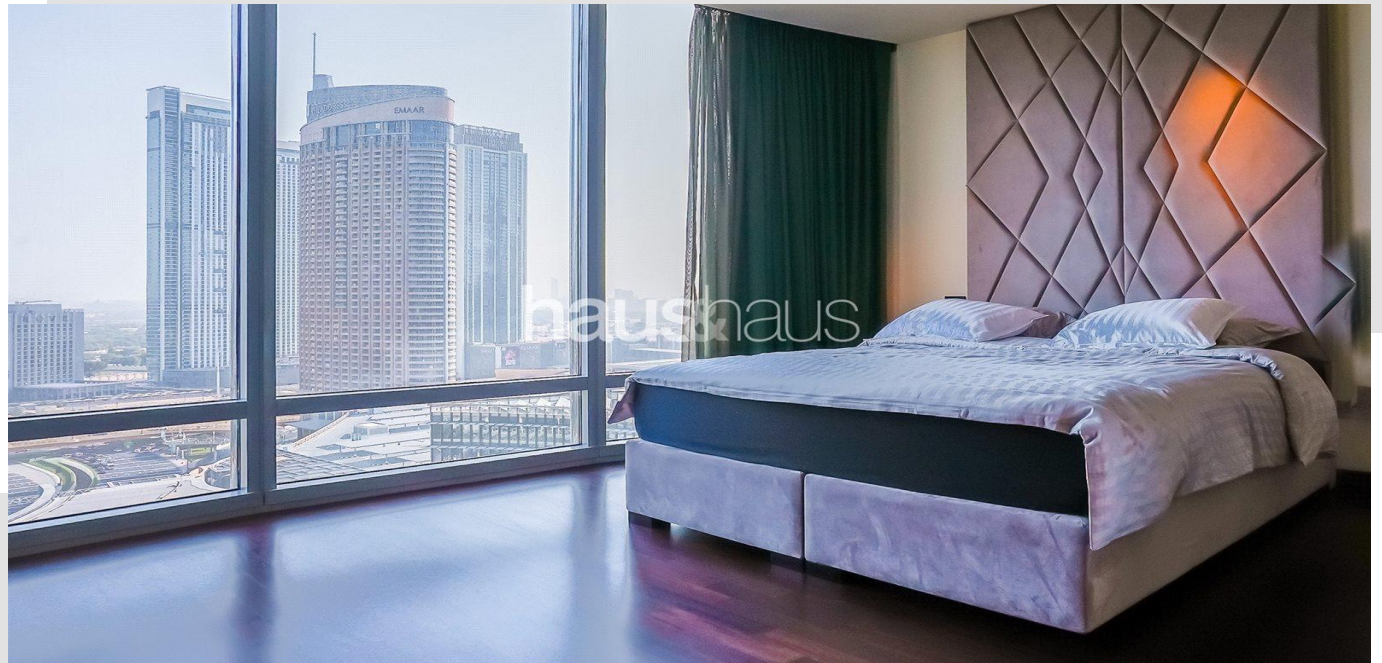
Property Features

- One of a Kind
- Large Terrace
- Burj Khalifa
- Fountain Views
- Great Location
- Luxury Living
- Stunning Panoramic Views
- Exclusive
- Call Sam today on +971 (0)58 582 1147 for more information

Rent on application

Available:

NOW



Burj Khalifa

Downtown





For viewing and more information,
please contact our property specialist:



Sam Tipton

Consultant | BRN: 51845

t: +971 (0) 4 302 5975

m: +971 (0) 58 582 1147

e: sam.t@hausandhaus.com

Disclaimer

Every attempt has been made to ensure accuracy, however these property particulars are approximate and for illustrative purposes only. They have been prepared in good faith and they are not intended to constitute part of an offer of contract. We have not carried out a structural survey and the services, appliances and specific fittings have not been tested. All photographs, measurements, floor plans and distances referred to

are given as a guide only and should not be relied upon for the purchase of any fixture or fittings. Lease details, service charges and ground rent (where applicable) are given as a guide only and should be checked prior to agreeing a sale. The copyright of details, photographs and floor plans remain exclusive to haus & haus Real Estate Broker.