

## Retail Unit for Sale | Hotel | Front Facing

Azizi Plaza Hotel, Al Furjan

haus & haus Commercial | [www.hausandhaus.com](http://www.hausandhaus.com)


Daniel Craig, Commercial Consultant | +971 (0) 4 302 5947 | +971 (0) 54 584 8248 | [daniel.c@hausandhaus.com](mailto:daniel.c@hausandhaus.com)

haus&haus



# Retail Unit for Sale | Hotel |

Azizi Plaza Hotel, Al Furjan

 978 sq.ft

## Property Description

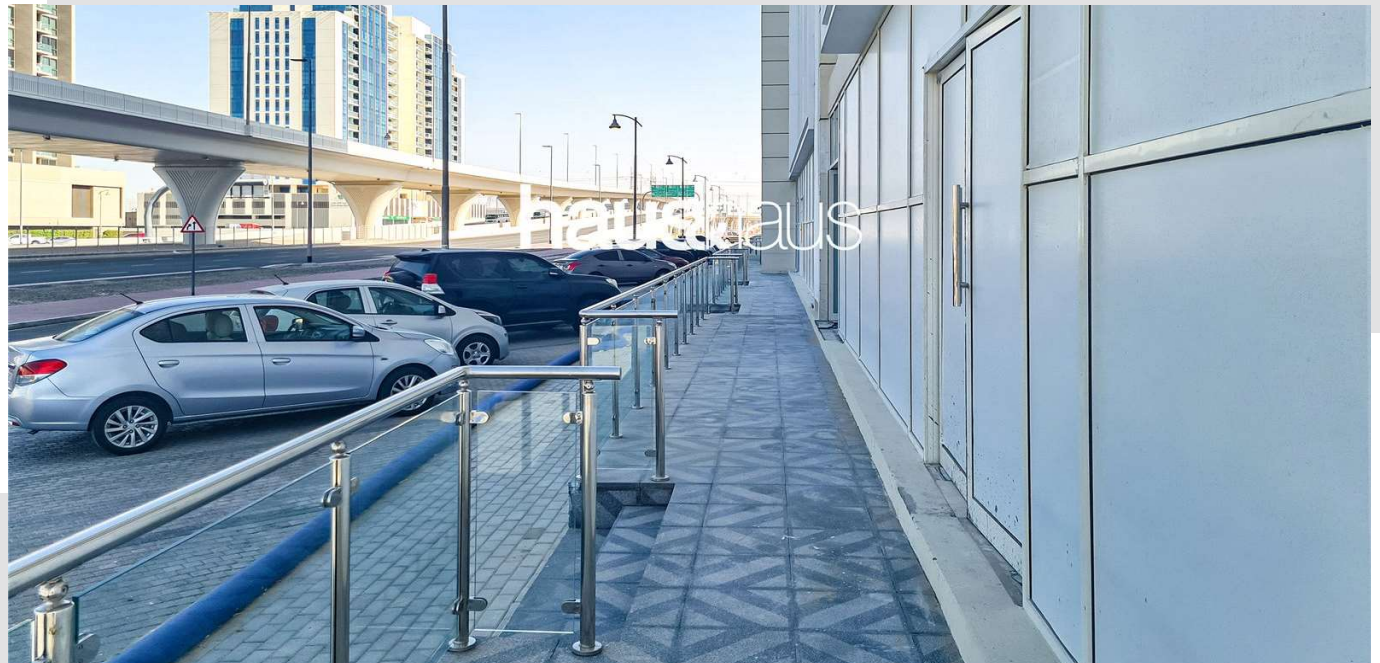
haus & haus is happy to present you with an amazing opportunity to own a front facing retail unit directly attached to a Hotel and Residence.

With high occupancy and near Jebel Ali Village, the units are close to the schools and residential townhouses and apartment buildings in both Al Furjan and Jebel Ali Village.

## Property Features

- Building has 286 Studios, 46 1 beds & 102 2 beds
- Premium Hotel Facilities
- Service charges 22 AED per sft
- Tenants have high demand for Retail
- 15 minutes from Marina, JVC, Barsha, JBR & Golf Club
- Options available for Sale (front facing and internal)
- Ideal for services including Salons, Pharmacies & Shops
- 1 Parking per unit
- Parking Available street-side

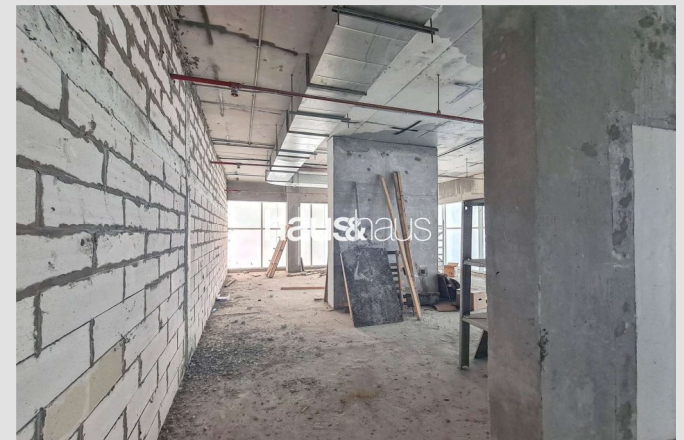
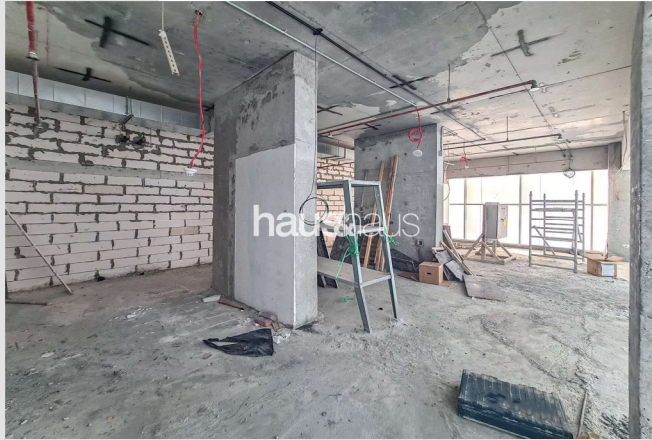
Asking Price: AED 1,926,000





# Retail Unit for Sale | Hotel | Front Facing,

Azizi Plaza Hotel, Al Furjan





For viewing and more information,  
please contact our property specialist:



## Daniel Craig

Commercial Consultant | BRN: 49290

t: +971 (0) 4 302 5947

m: +971 (0) 54 584 8248

e: [daniel.c@hausandhaus.com](mailto:daniel.c@hausandhaus.com)

### Disclaimer

Every attempt has been made to ensure accuracy, however these property particulars are approximate and for illustrative purposes only. They have been prepared in good faith and they are not intended to constitute part of an offer of contract. We have not carried out a structural survey and the services, appliances and specific fittings have not been tested. All photographs, measurements, floor plans and distances referred to

are given as a guide only and should not be relied upon for the purchase of any fixture or fittings. Lease details, service charges and ground rent (where applicable) are given as a guide only and should be checked prior to agreeing a sale. The copyright of details, photographs and floor plans remain exclusive to haus & haus Commercial.