



## Palm Tower, Palm Jumeirah

# Palm Tower

Palm Jumeirah

 1  1  1034 sq.ft

## Property Description

Estelle and haus & haus are pleased to present this luxurious high floor 1-bedroom apartment for sale at the heart of Palm Jumeirah. This apartment offers unobstructed views over the Arabian Gulf and city skylines. It was elegantly furnished by B&B Italia and has a direct access to the luxurious St. Regis Hotel and its amenities, Nakheel Mall and various exclusive restaurants to choose from.

## Property Features

- Connected to 5-star Hotel St. Regis
- High-floor
- Panoramic Sea View on Burj Al Arab
- State of the art spa, gym & pools (infinity pool AURA)
- Luxury dining such as the restaurant SUSHISAMBA
- Close to West Beach and its beach clubs
- Call Estelle +971 (0) 58 552 2717 now to arrange your viewing

**Asking Price: AED 3,950,000**

### Available:

Vacant on transfer. Viewings on request.





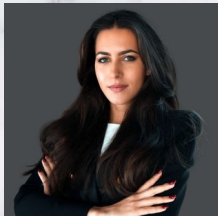
# Palm Tower

Palm Jumeirah





For viewing and more information,  
please contact our property specialist:



## Estelle Klose

Consultant | BRN: 28124

t: +971 (0) 4 407 4552

m: +971 (0) 58 552 2717

e: [estelle.klose@hausandhaus.com](mailto:estelle.klose@hausandhaus.com)

### Disclaimer

Every attempt has been made to ensure accuracy, however these property particulars are approximate and for illustrative purposes only. They have been prepared in good faith and they are not intended to constitute part of an offer of contract. We have not carried out a structural survey and the services, appliances and specific fittings have not been tested. All photographs, measurements, floor plans and distances referred to

are given as a guide only and should not be relied upon for the purchase of any fixture or fittings. Lease details, service charges and ground rent (where applicable) are given as a guide only and should be checked prior to agreeing a sale. The copyright of details, photographs and floor plans remain exclusive to haus & haus Real Estate Broker.