

# Concorde Tower

Jumeirah Lake Towers

haus&haus

 1  2  675 sq.ft

## Property Description

haus & haus brings you this opportunity to purchase a high rent return investors unit, mid-floor 1 bedroom with large balcony, fitted wardrobes, 2 bathrooms and kitchen white goods included. This bright apartment also benefits from lake and Jumeirah Island views. Perfect for an investor, who would benefit from 7.5% net ROI.



## Property Features

- 1 bedroom
- Large balcony
- En-suite bathroom + guests powder room
- Part furnished
- Good views
- Great building facilities
- Very well location with excellent local amenities
- Call now to arrange your viewing

Asking Price: AED 800,000

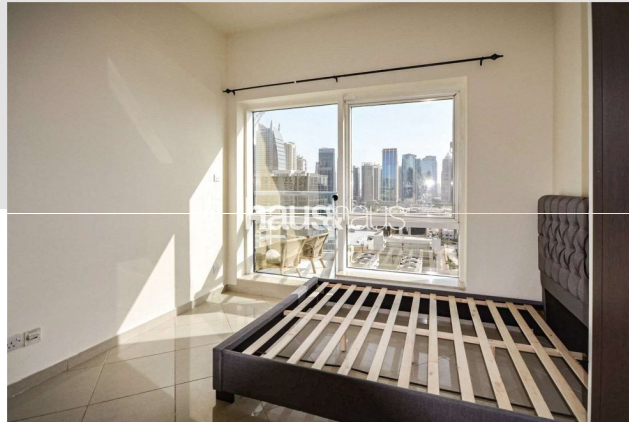
Call +971 (0)50 125 0868 for your viewing





# Concorde Tower

Jumeirah Lake Towers



For viewing and more information,  
please contact our property specialist:



**Rowan Beale**

Negotiator

t: +971 (0) 4 302 5874

m: +971 (0) 50 125 0868

e: rowan@hausandhaus.com

BRN: 47486

## Disclaimer

Every attempt has been made to ensure accuracy, however these property particulars are approximate and for illustrative purposes only. They have been prepared in good faith and they are not intended to constitute part of an offer of contract. We have not carried out a structural survey and the services, appliances and specific fittings have not been tested. All photographs, measurements, floor plans and distances referred to are given as a guide only and should not be relied upon for the purchase of any fixture or fittings. Lease details, service charges and ground rent (where applicable) are given as a guide only and should be checked prior to agreeing a sale. The copyright of details, photographs and floor plans remain exclusive to haus & haus Real Estate Broker.

**haus & haus Real Estate Broker**

www.hausandhaus.com | RERA Permit ID: 55439