

Signature Villas Frond P, Palm Jumeirah

haus & haus Real Estate Broker | www.hausandhaus.com

Jessica Eaton, Consultant | +971 (0) 4 302 5927 | +971 (0) 58 517 2997 | jessica@hausandhaus.com

haus&haus

Signature Villas Frond P

Palm Jumeirah

 6  7  9000 sq.ft

Property Description

haus & haus is pleased to offer for sale this exclusive ultra-modern beach villa in Dubai's finest postcode, Palm Jumeirah.

Built up of over 9,000 sq.ft and situated on a generous plot of 14,625 sq.ft, this home offers 6 large bedroom suites and filled with natural light. The master suite and 2nd bedroom overlooks the sea.

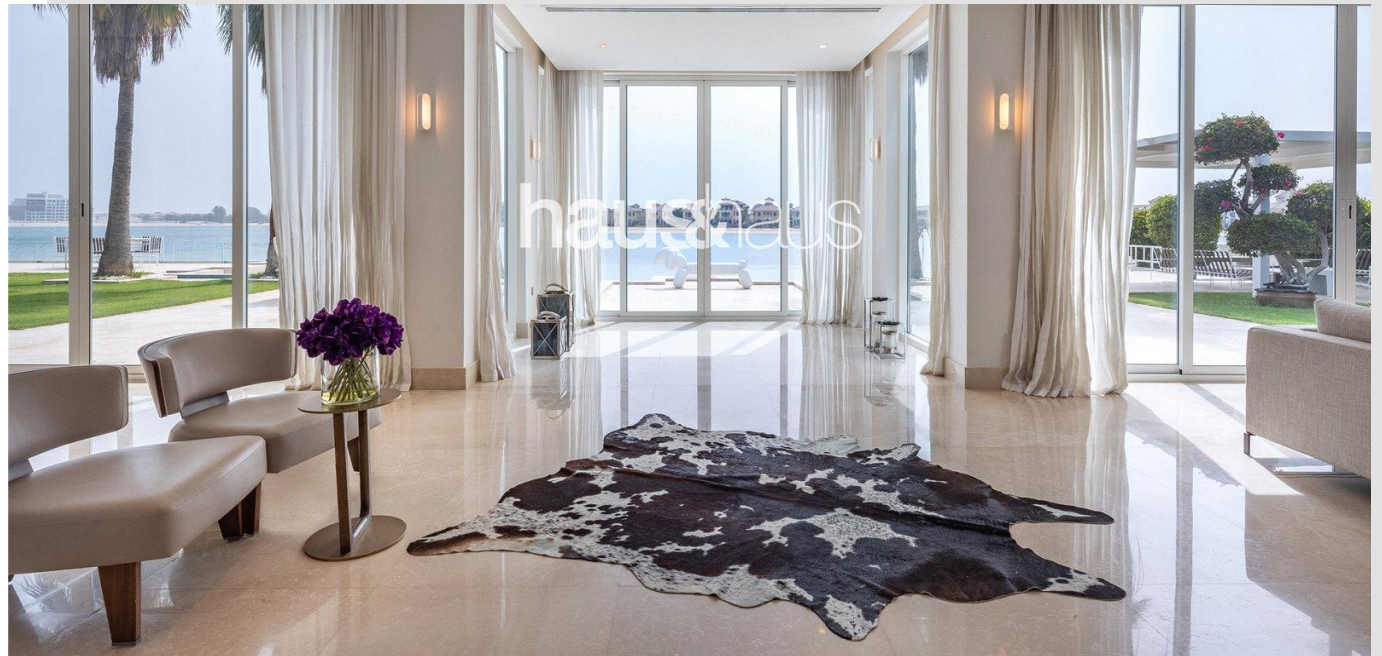
Property Features

- Located at end of Frond (Tip Villa)
- Ultra-Modern Beach Mansion
- Extended BUA - 9,000 sq.ft
- Extended PLOT - 14,625 sq.ft
- 6 bedrooms, 7 baths
- Home Aquarium
- 2 professional kitchens
- Maids & drivers room external
- Infinity Pool
- Private Beach

Asking Price: AED 85,000,000

Available:

VACANT NOW.



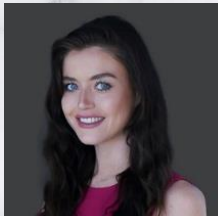
Signature Villas Frond P

Palm Jumeirah





For viewing and more information,
please contact our property specialist:



Jessica Eaton

Consultant | BRN: 48993

t: +971 (0) 4 302 5927

m: +971 (0) 58 517 2997

e: jessica@hausandhaus.com

Disclaimer

Every attempt has been made to ensure accuracy, however these property particulars are approximate and for illustrative purposes only. They have been prepared in good faith and they are not intended to constitute part of an offer of contract. We have not carried out a structural survey and the services, appliances and specific fittings have not been tested. All photographs, measurements, floor plans and distances referred to

are given as a guide only and should not be relied upon for the purchase of any fixture or fittings. Lease details, service charges and ground rent (where applicable) are given as a guide only and should be checked prior to agreeing a sale. The copyright of details, photographs and floor plans remain exclusive to haus & haus Real Estate Broker.